

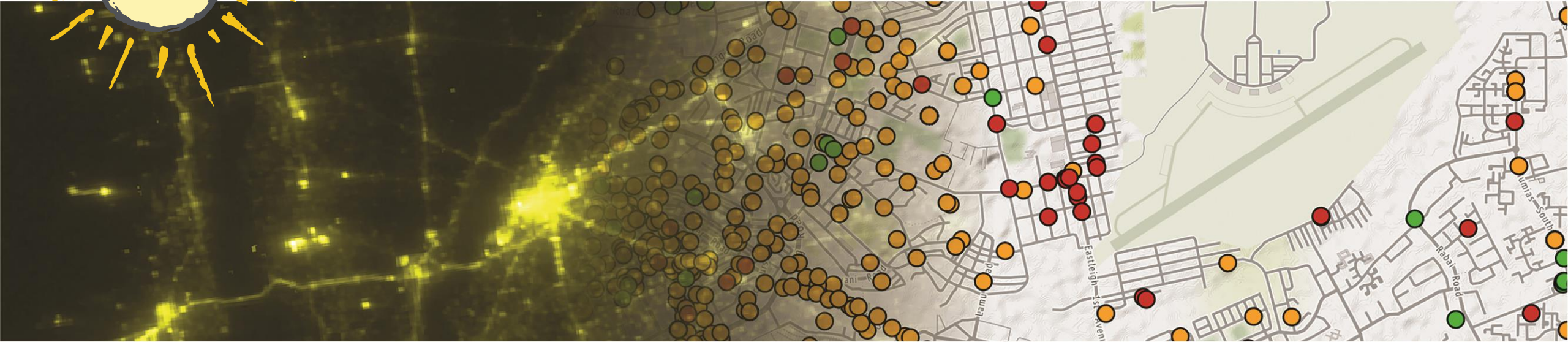


IE CONNECT FOR IMPACT

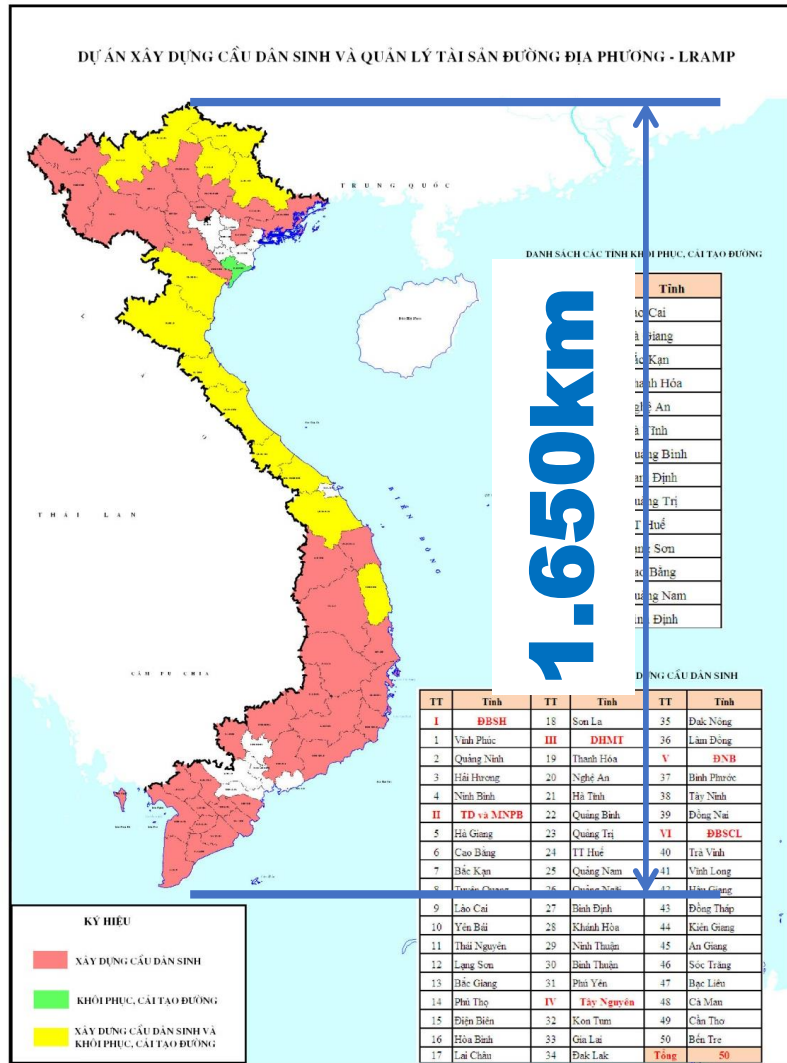
Transforming the Growth Potential
of Transport Investments

IE of Rural Bridge Construction in Vietnam

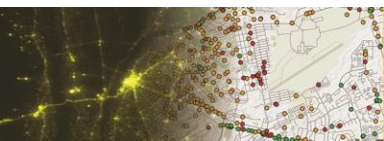
To Nam Toan, Vu Hai Tung, Phuong Thi Minh Tran, Elizaveta Perova,
Aneesh Mannava, Samuel Asare, Aidan Coville, Gursmeep Hundal



Rural Bridges Project in Vietnam



1.700 Bridges in
5.237 Communes of
450 Districts of
50/63 Provinces of Vietnam



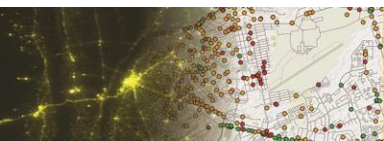
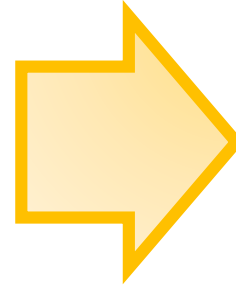


A *cầu khỉ* ("monkey bridge") in Vietnam is a handmade bamboo or wooden pass way across a stream or gully.

The 1700 concrete bridges to be constructed in this project are to do away with such dangerous bridges.

Background

- Bridges will typically be rigid from 6 to 200 meters allow motorize traffic
- IE Team comprised of from members of MoT, DRVN, PDOT, and WB



Research Question

What is the impact of bridge construction on connectivity, human development, safety, and socio-economic outcomes?

Theory of Change

Interventions:

- Bridges Constructed
- Safety champion trained
- Agriculture extension support provided

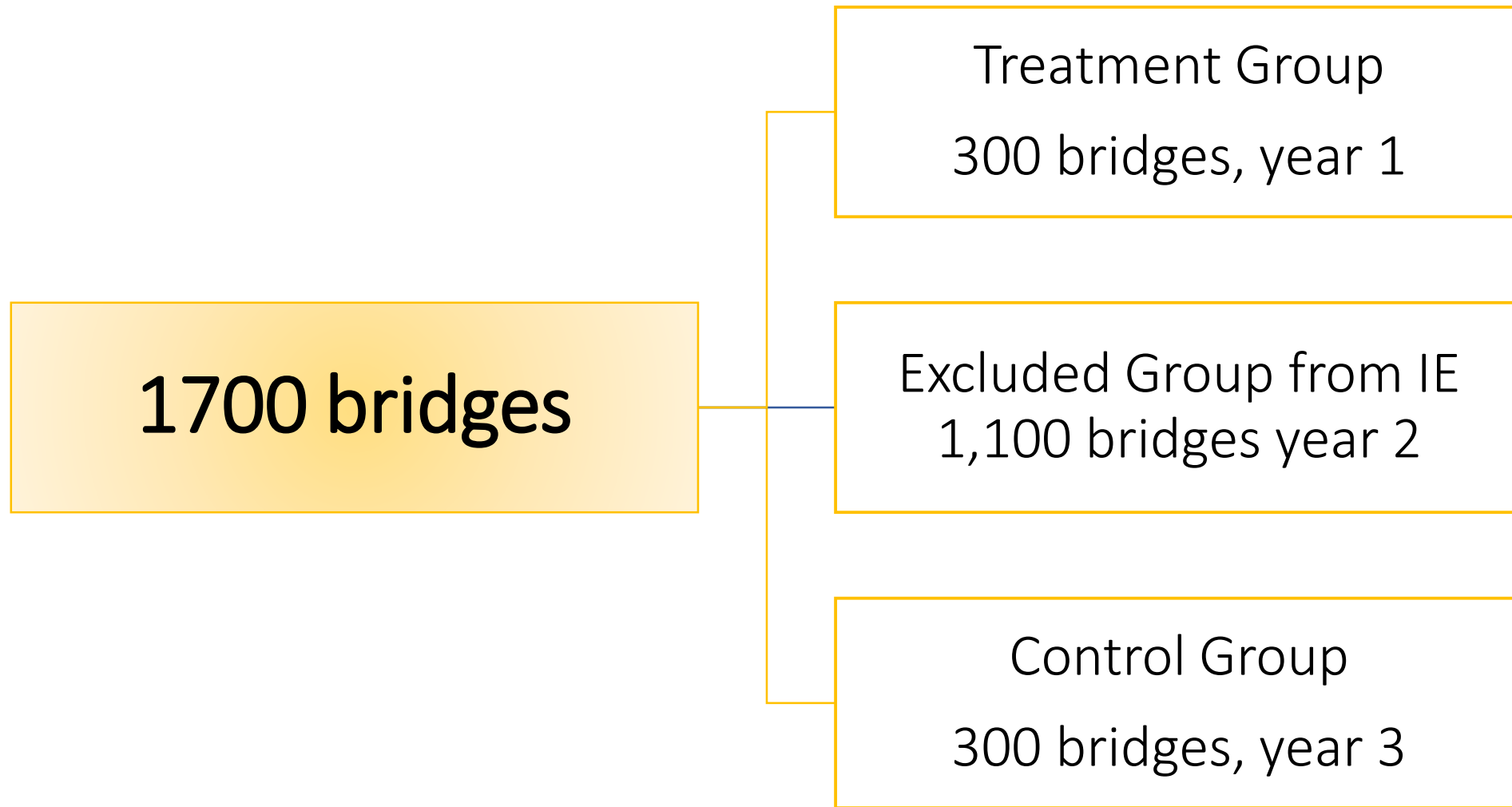
Outputs:

- Travel cost and travel time reduction
- Increased traffic volume, school attendance, clinic visit, market access
- Improved job opportunities, particularly for women

Outcomes:

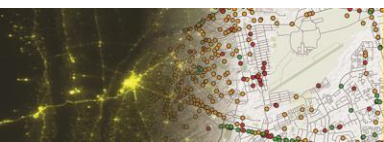
- Increased household income
- Better health outcomes
- Better education outcomes

Proposed IE

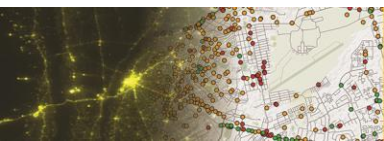
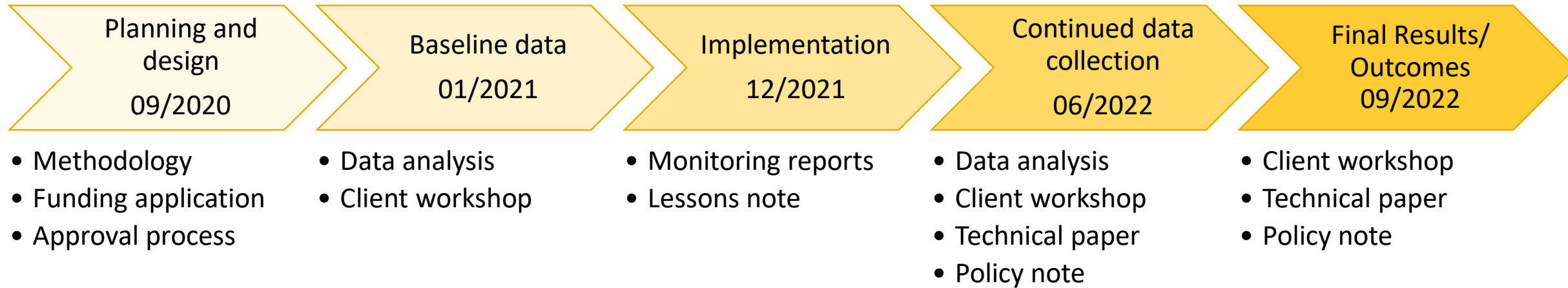


Data Sources

- Bridge Inventory data
- Bridge GIS data
- Household data
- ORMA platform
- Hamlet leader: accident, flood, trading opportunity, road & bridge interruption during raining reason,
- Design consultant review infrastructure quality
- GPS data of school, clinic, market, factory, etc
- PMU data



Timeline



Our Team

