



# IE CONNECT FOR IMPACT

Transforming the Growth Potential  
of Transport Investments

## Urban Housing in South Africa

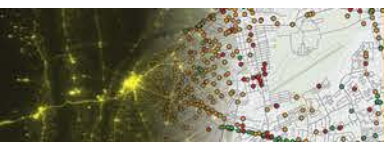
Will Violette (Federal Trade Commission) with Stefano  
Polloni (Mapdwell) and Ben Bradlow (Brown University)

Any opinions expressed herein are those of the authors  
and do not necessarily represent the views of the  
Federal Trade Commission.

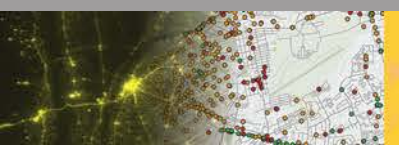
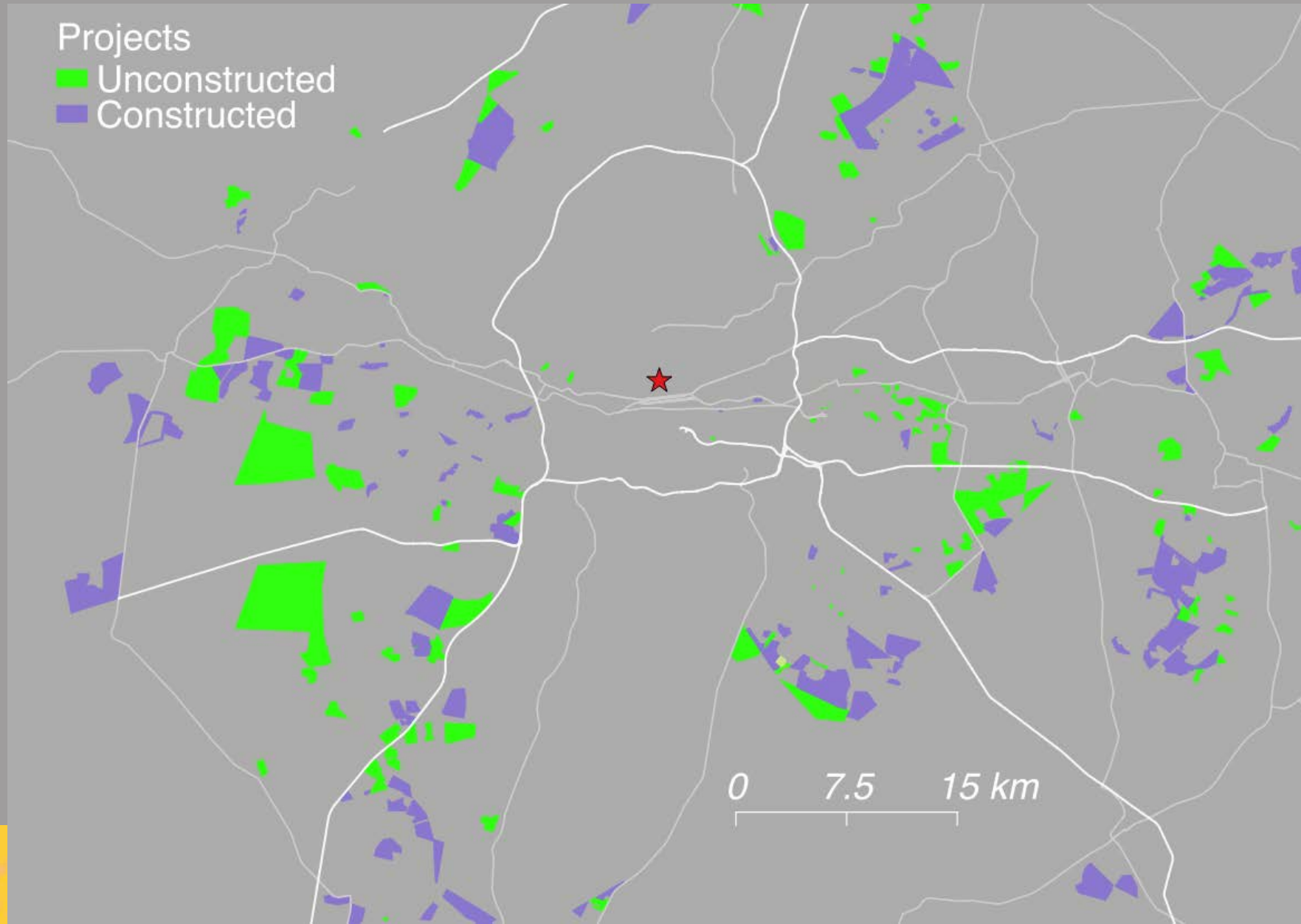


# How does mobility interact with other policies?

- Mobility can increase access to **public services** and jobs for **public housing** recipients
- Research Question: are **public housing projects** more effective in areas with high mobility?



# Housing Projects in Johannesburg 2001-2012





2012

- Formal Houses
- ▲ Informal Houses

Constructed

Unconstructed





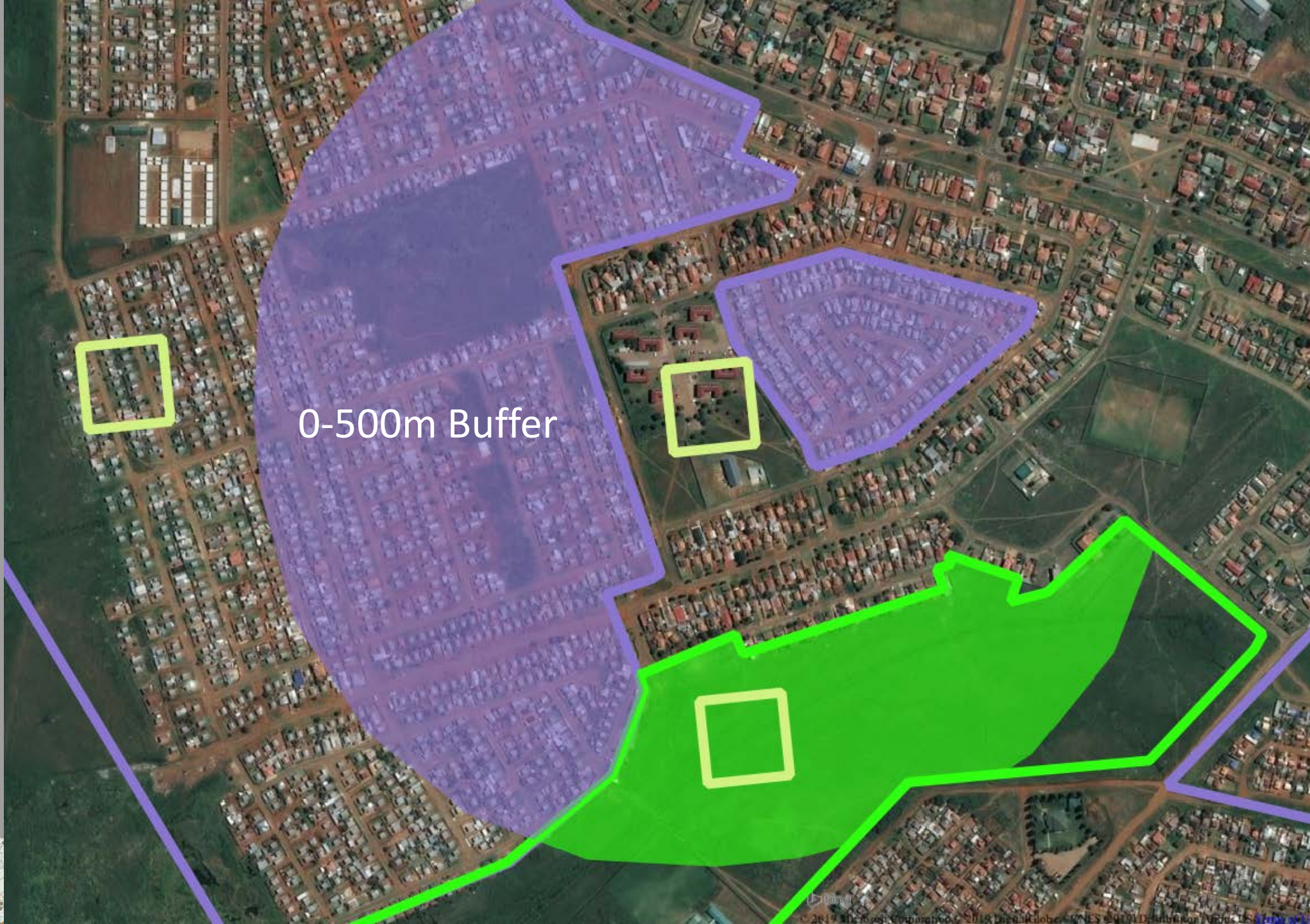


Constructed

Unconstructed







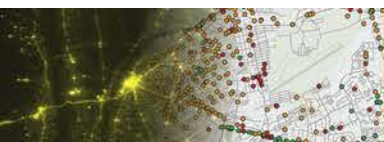
0-500m Buffer





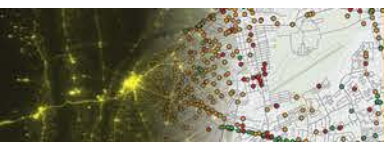
|                         | Formal Houses per km <sup>2</sup> |                 | Informal Houses per km <sup>2</sup> |              |
|-------------------------|-----------------------------------|-----------------|-------------------------------------|--------------|
|                         | <33 km                            | >33 km          | <33 km                              | >33 km       |
| Distance to city center | <33 km                            | >33 km          | <33 km                              | >33 km       |
| Footprint Overlap       | 776***<br>(101)                   | 498***<br>(116) | 470**<br>(144)                      | 40<br>(115)  |
| Buffer Overlap (0-.5km) | 308<br>(175)                      | 88<br>(125)     | 581*<br>(290)                       | 283<br>(197) |
| Mean in 2001            | 249                               | 159             | 197                                 | 132          |
| N                       | 195194                            | 153214          | 195194                              | 153214       |

Obs. are 100m<sup>2</sup> plots in 2001 and 2012. Estimates are changes in constructed relative to unconstructed projects. Estimates control for buffer overlap up to 3km in .5 km intervals. Significance: 10%\*, 5%\*\* , 1%\*\*\*



# Discussion

- High mobility -> housing projects attract more people
  - More households benefit from services
  - Crowding may impose costs on neighbors





# Thank you!

