

Indonesia Social Protection Technical Seminar (ISPTS)

BUILDING ADAPTIVE SOCIAL PROTECTION SYSTEMS FOR RESILIENCE AND RAPID RESPONSE

Presented by

Fisca Miswari Aulia

Directorate of Poverty Alleviation and Community Empowerment,
Ministry of National Development Planning/Bappenas



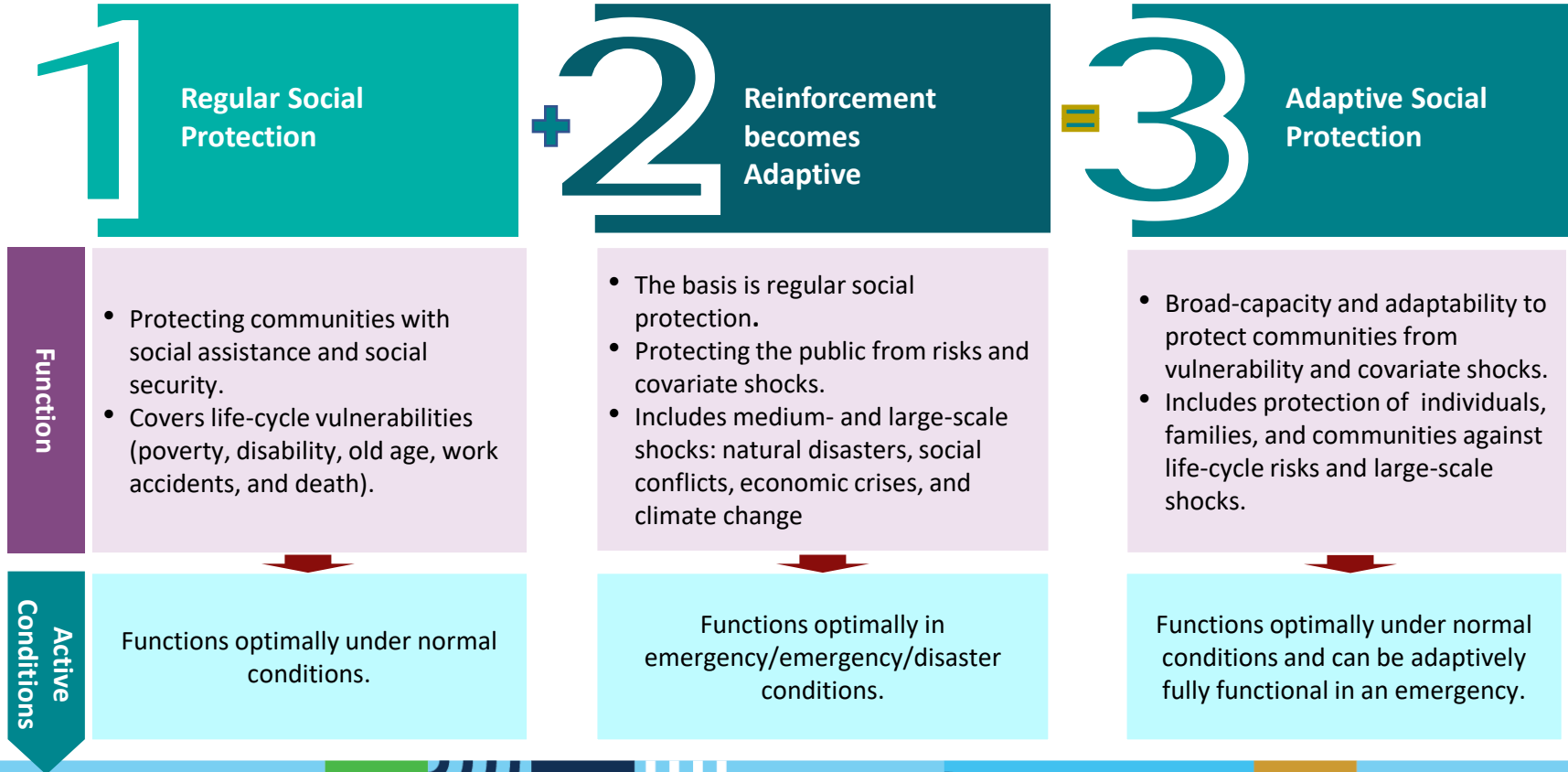
Supported by:



Australian Government



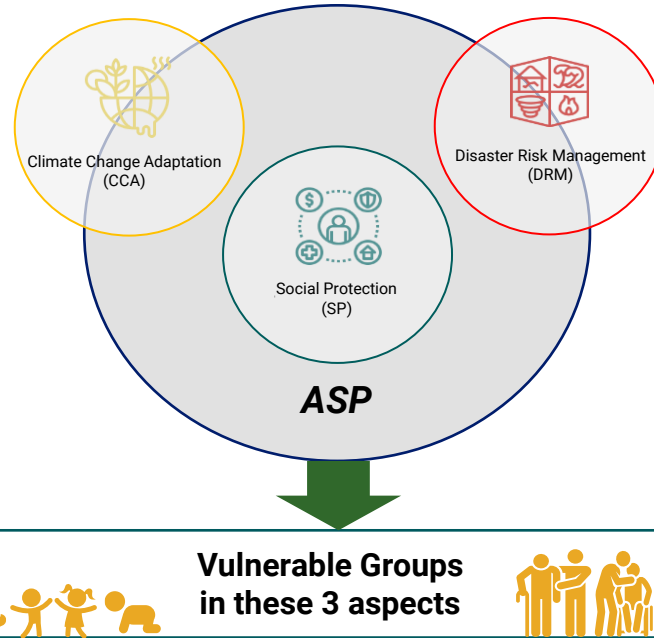
CONCEPT OF ADAPTIVE SOCIAL PROTECTION



ADAPTIVE SOCIAL PROTECTION INTEGRATION

Climate change poses major challenges to Indonesia's social protection system, such as:

- Increasing frequency of natural disasters.
- Disruption of the agricultural and fishery cycles, that can cause price instability and consequently, impact livelihoods and incomes of farmers and fishermen.
- *Displacement and forced migration that have the potential to cause social tension.*



Poor People Are Most Exposed to the Climate Crisis:

- Poor people have few assets and have limited access to capital.
- They depend on climate-sensitive sectors such as agriculture and fisheries.
- They live in areas that are more vulnerable to climate change, such as coastlines.

Increasing community resilience through ASP is carried out by:

- **Capacity building** of communities to anticipate, absorb, and adapt to covariate shocks due to disasters.
- **Transformation** to ensure the survival of post-disaster communities and as a form of adaptation to disaster risks.

INDONESIA'S COMMITMENT TO REALIZING ADAPTIVE SOCIAL PROTECTION

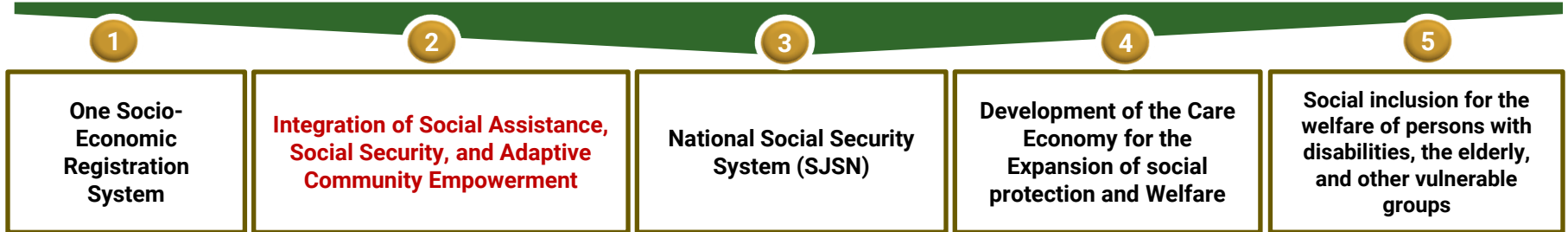


A SOVEREIGN, DEVELOPED AND SUSTAINABLE ARCHIPELAGO

Development Agenda
SOCIAL TRANSFORMATION

Adaptive Social Protection

Indicator
The Building of an Adaptive Social Protection System for All Residents



Realize integrated and adaptive social assistance, social security, and empowerment in the face of disasters and climate change.

DATA-DRIVEN ADAPTIVE SOCIAL PROTECTION THAT IS ACCURATE

InaMHEWS - BMKG

InaRISK - BNPB

InaAWARE - BNPB

InaSAFE - BNPB

Socio-Economic Registration Data (Regsosek)

Ministry of National Development Planning/Bappenas
(Individuals and families based on socio-economic conditions)



Data on the Acceleration of Extreme Poverty Elimination (P3KE)

Coordinating Ministry for Human Development and Culture
(Individuals and families who have spending below USD 1.90 PPP)



Integrated Social Welfare Data (DTKS)

Ministry of Social Affairs
(Individuals and families in the poorest 40% of the consumption distribution)



Indonesia Disaster Index Data (DIBI)

National Disaster Management Agency
(Disaster conditions in Indonesia)



THE AVAILABLE DATA CAN PROVIDE A FOUNDATION FOR THE PLANNING AND IMPLEMENTATION OF SOCIAL PROTECTION PROGRAMS QUICKLY AND RESPOND TO EMERGENCIES

PRE – DISASTER Preparedness and Mitigation

- Groups are identified as vulnerable to disasters.
- Location mapping based on disaster risk (overlay geo tagging with disaster risk areas)
- Program design can be mapped and planned as needed

DURING THE DISASTER Quick Response and Adjustment of Assistance

- Pairing the use of Real Time Data with pre-disaster data to determine assistance priorities.
- Accurate and effective distribution of assistance as needed.
- Collaboration between agencies runs smoothly using the same data so that aid distribution does not overlap.

POST – DISASTER Recovery and Rehabilitation

- Recovery programs for the community in terms of economic improvement (training, business capital assistance, housing rehabilitation, etc.)
- Post-disaster data can be used as an evaluation and update social protection policies and systems that are more adaptive, participatory, and anticipatory

POTENTIAL AND PROGRAM COLLABORATION IN DISASTER MANAGEMENT

Pre-Disaster

Preparedness and Mitigation

Rice Farming Business Insurance	Ministry of Agriculture
Climate Village Programme	KLHK
Fisheries Insurance for Small Fish Farmers	KKP
Climate Healthy Village (Desa-Desi)	Ministry of Health
Disaster Resilient Families	BNPB/KemenkoPMK
Disaster Resilient Village	BNPB
PENA	Ministry of Social Affairs
Social Barns and Disaster Preparedness Villages	Ministry of Social Affairs



Regular Social Protection (PKH)



Melalui sesi Pertemuan Peningkatan Kemampuan Keluarga (P2K2)

During Disasters

Rapid Response

Public Kitchen, Romance Room, Health Post, Temporary School, Public Toilet	Tagana, Ministry of Social Affairs, PMI
Social Barns	Ministry of Social Affairs
Psychosocial Services (LDP) by Social Welfare Units and Centers/LKS	Ministry of Social Affairs
Data in real time	BNPB Ministry of Social Affairs Bappenas, KemenkoPMK



Regular Social Protection (PKH)

Modification of the distribution of the Basic Food program (Sembako)



- Ensuring that Daily Living Activities are no different from before the disaster
- Protecting vulnerable groups

Post-Disaster

Recovery and Rehabilitation

Village Fund	Ministry of Finance
PENA	Ministry of Social Affairs
Disaster Risk Reduction Program (DRR)	BNPB
Pra Kerja	Ministry of Manpower
Updating Data for Regular Social Assistance	Ministry of Social Affairs, Bappenas, KemenkoPMK
Business Assistance for Disaster Victims	Ministry of Cooperatives and SMEs
Fisheries and Agriculture Insurance	Ministry of Agriculture



Regular Social Protection (PKH)

Additional FDS materials by PKH facilitators
Psychosocial Support Services to minimize trauma etc.



- The community socioeconomic conditions improve
- Climate-friendly and adaptive livelihoods

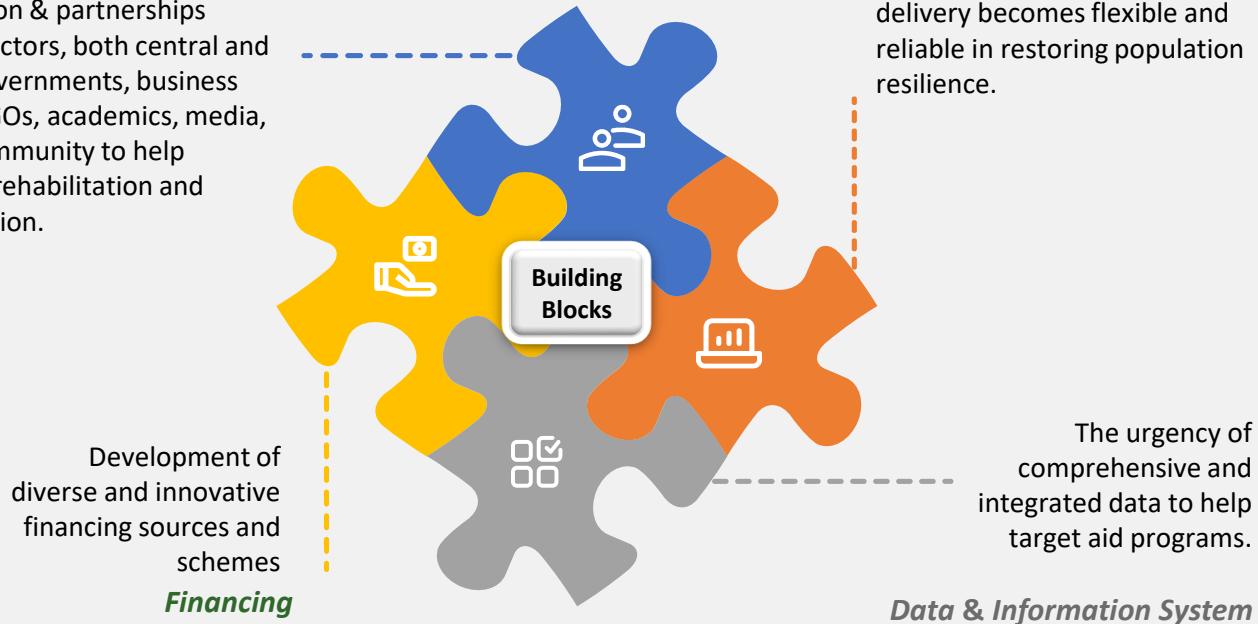
STRATEGIES IN THE ADAPTIVE SOCIAL PROTECTION ROADMAP

Institutional Arrangement & Partnerships

Collaboration & partnerships between sectors, both central and regional governments, business entities, NGOs, academics, media, and the community to help accelerate rehabilitation and reconstruction.

Program & Delivery System

How post-disaster program delivery becomes flexible and reliable in restoring population resilience.





*Kementerian PPN/
Bappenas*



WORLD BANK GROUP

SUPPORTED BY:



Australian Government