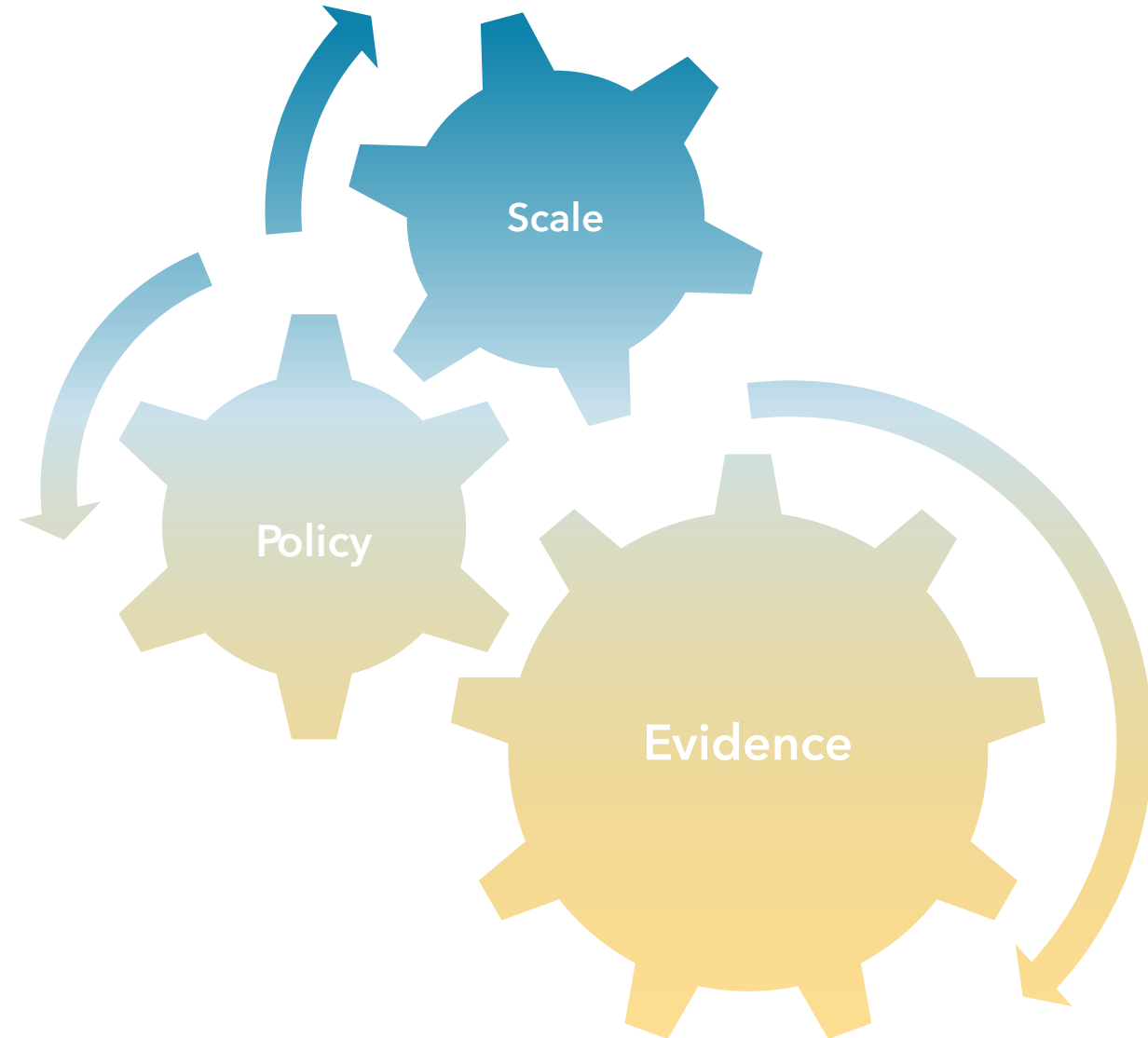
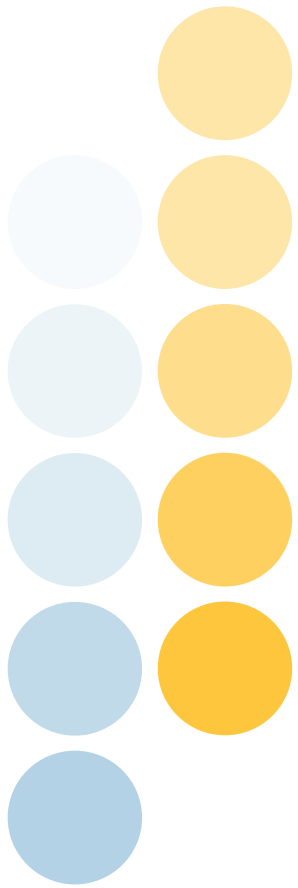


Impact Evaluation Collaborative

Moving Economic
Inclusion to Scale

IE WORKSHOP





Opening and welcome!

Colin Andrews
Patrick Premand
Sarang Chaudhury

Workshop objectives

- To support each project to design an impact evaluation (i) tailored to the most strategic policy questions in their country, and (ii) that contributes to global learning priorities.
- Facilitate collaborations between government teams, operational teams, researchers and advisors, as well as cross-learning between teams.
- Explore avenues for collaboration after the workshop.

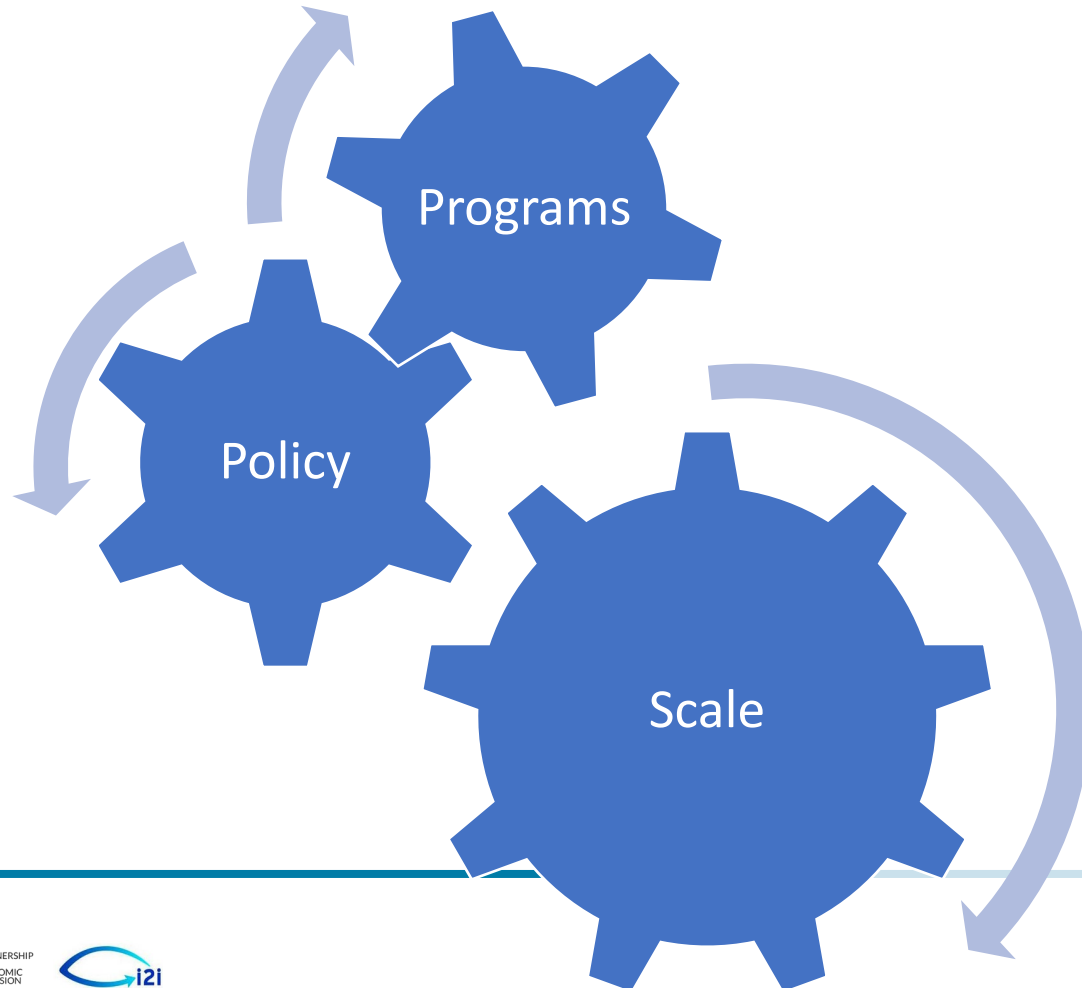
State of economic inclusion

Key Messages

State of Economic Inclusion Report 2021

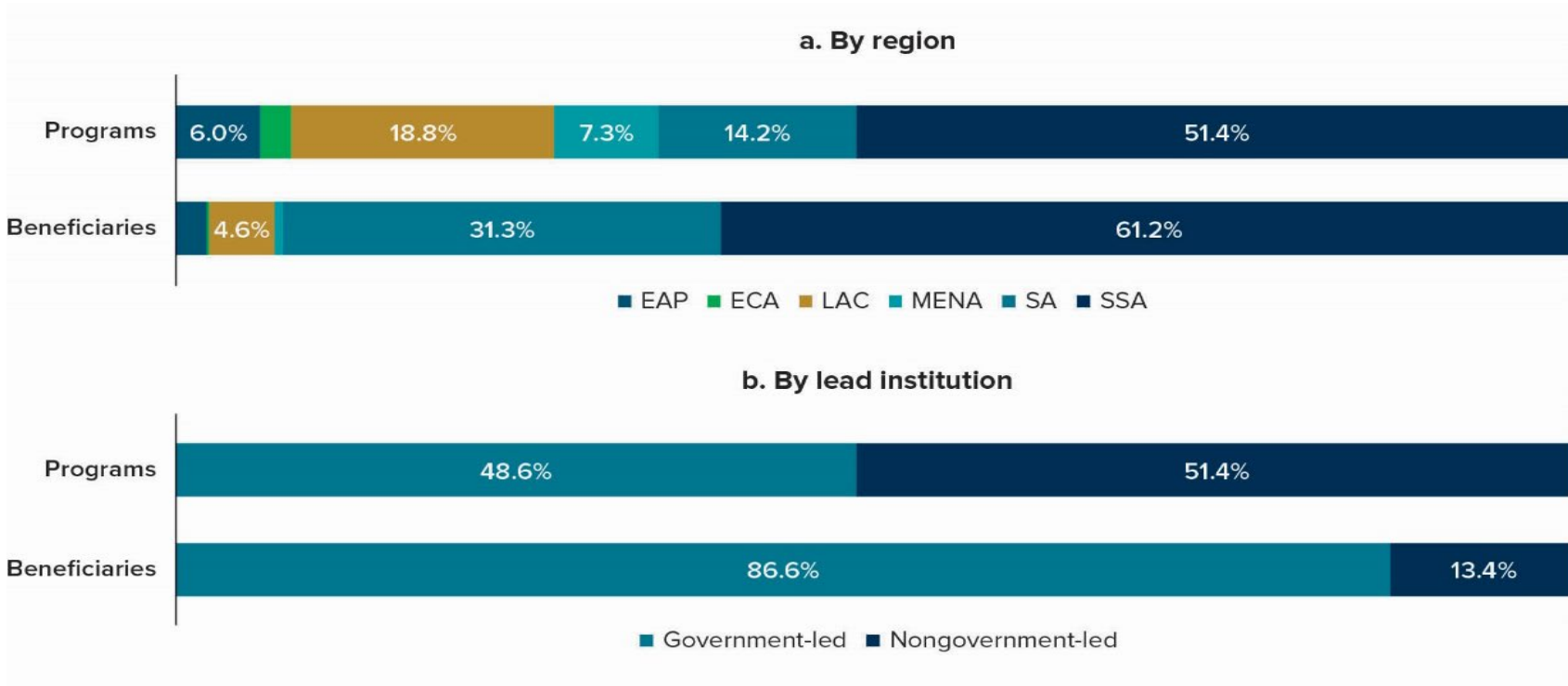
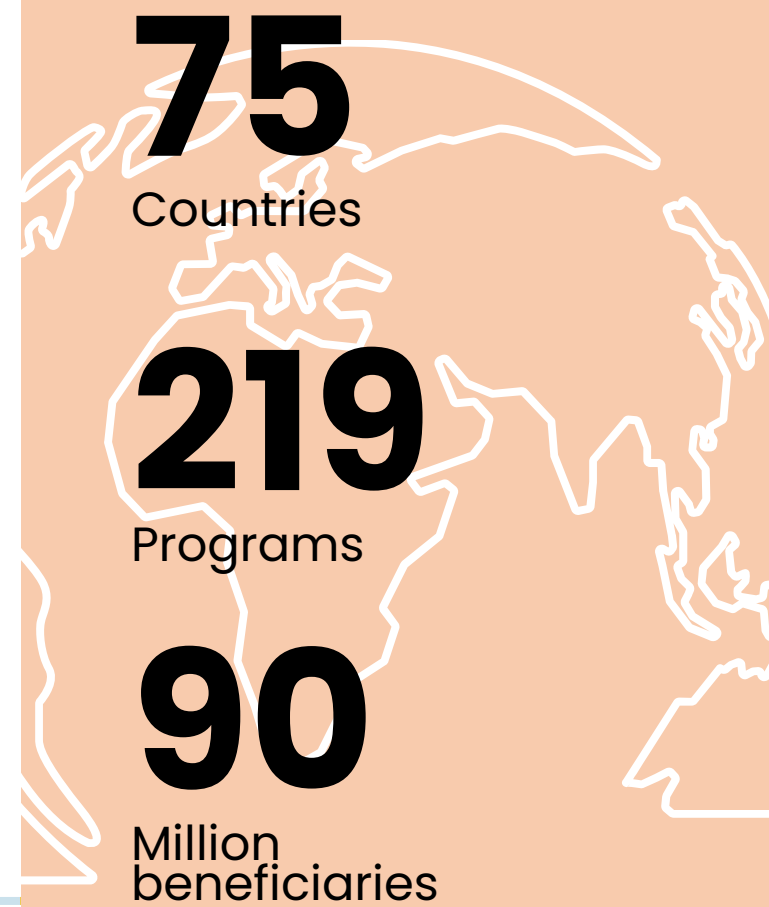
- 1. Surge:** There has been a surge in economic inclusion programs for the poorest in over 75 + countries – momentum continues in the COVID-19 context.
- 2. Scale:** Governments lead the scale up of economic inclusion, building on national programs and policy linked to safety nets; livelihoods and jobs; and financial inclusion.
- 3. Evidence:** Evidence base on program impact and cost effectiveness is promising – critical to addressing political economy debates.

Economic Inclusion at Scale: a Definition



- Bundle of multidimensional and coordinated interventions for the extreme poor and vulnerable
- Embedded within a national policy and strategy framework for poverty reduction
- Taken to scale through programmatic and institutional adaptation

The Changing Global Landscape

75
 Countries

219
 Programs

90
 Million beneficiaries

www.peiglobal.org

Towards an operational agenda: 7 Considerations

1. Objectives
2. Target Populations
3. Diversity in program components
4. Builds on existing programs
5. Scale
6. Impact
7. Costs



Photo credit: CGAP

#1: There is a range of objectives

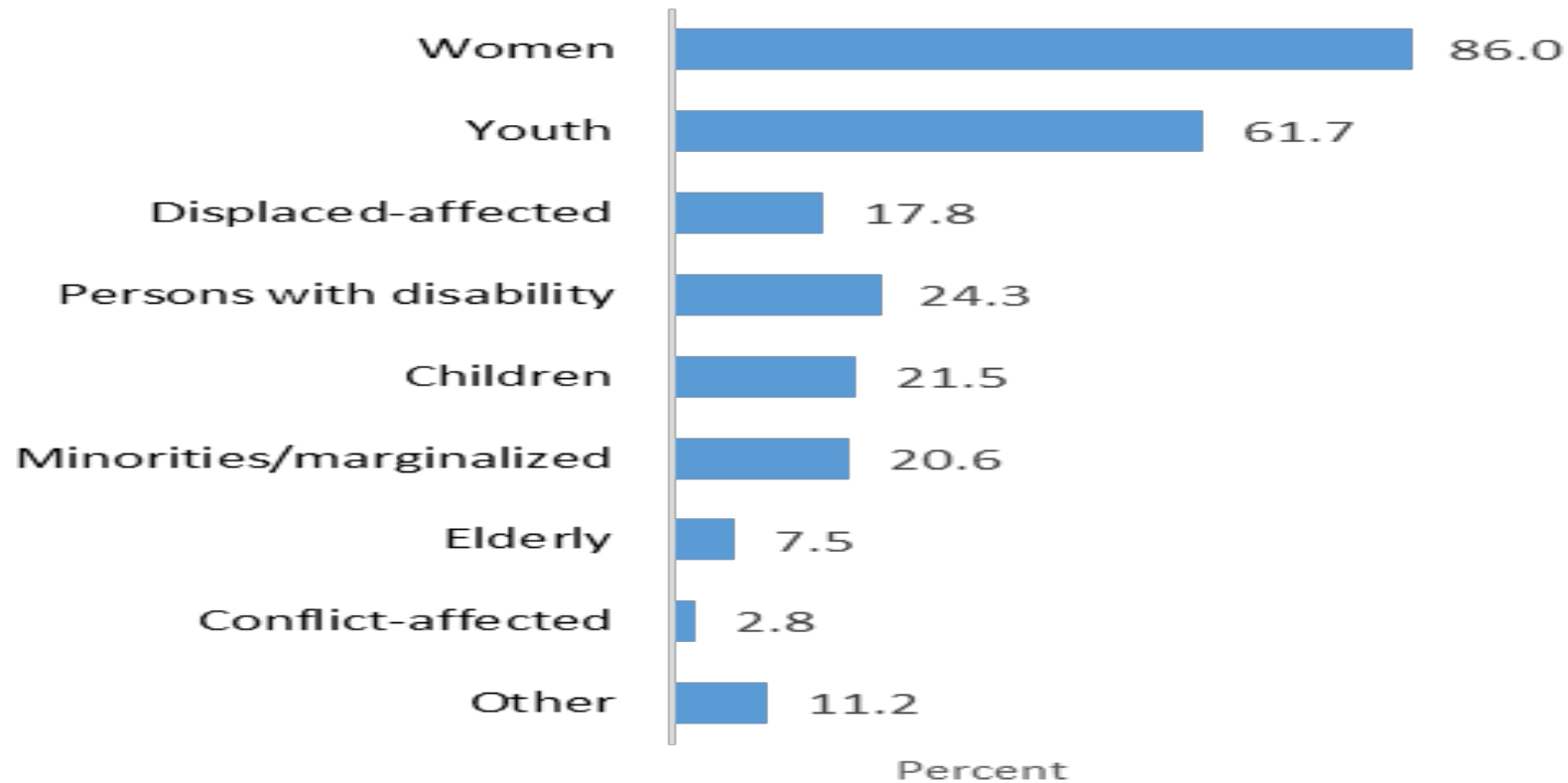
Objectives (Global: Government-led Programs)



#2:

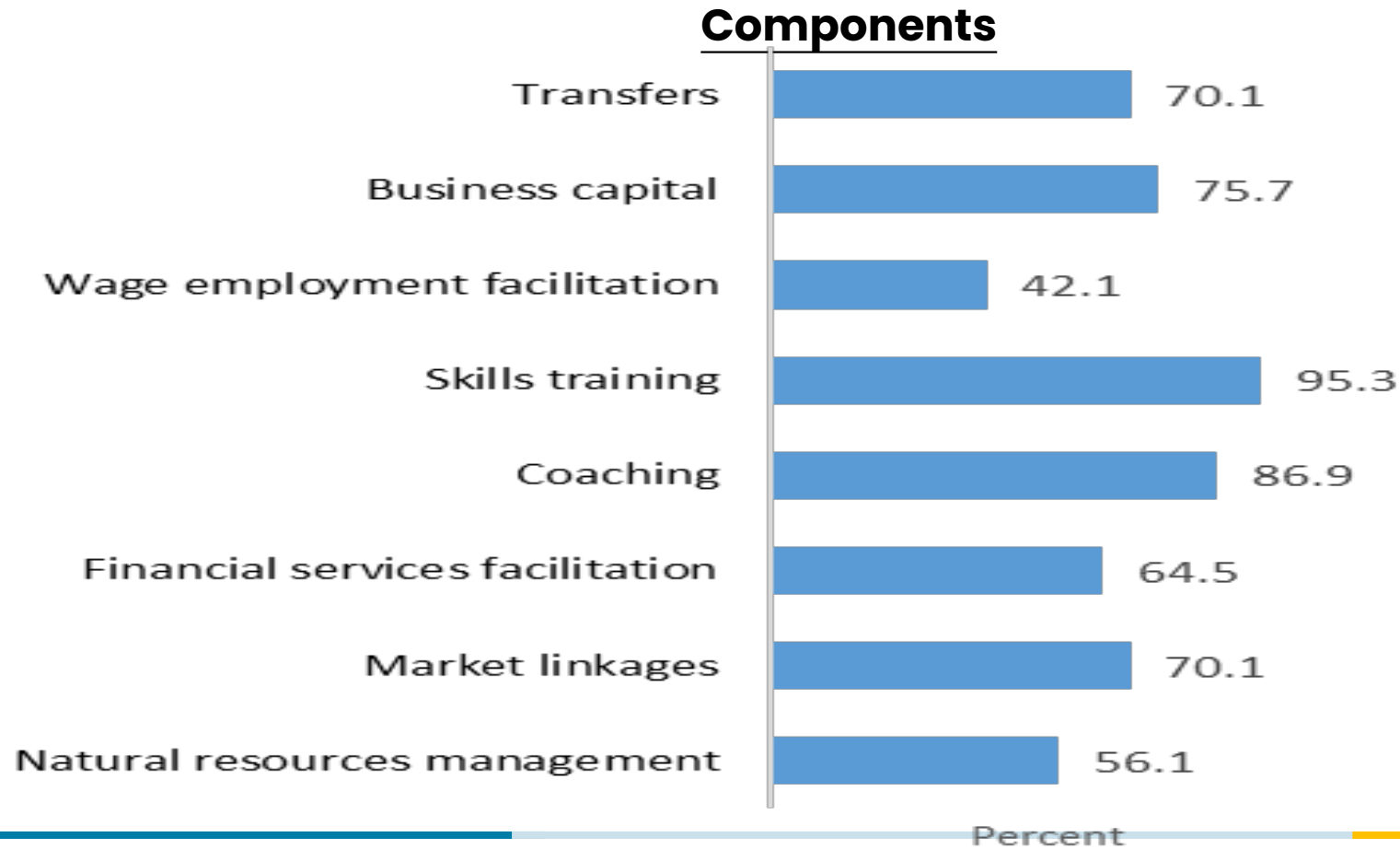
Programs are Customized for Different Target Groups

Target groups



3: There is Diversity in Program Components

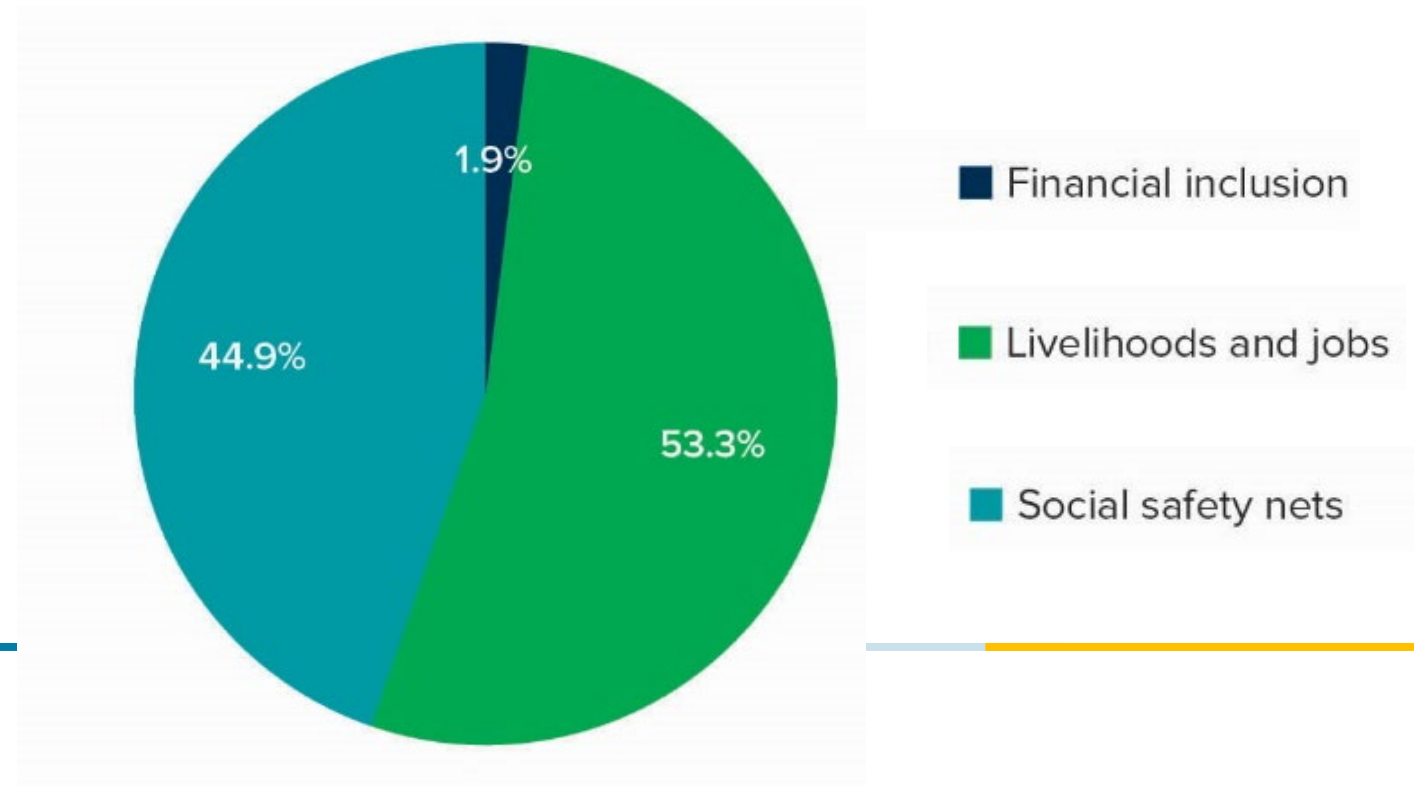
47% of Government-led programs have between 5-6 components



4: EI Builds on Existing Programs

Programs can be built onto pre-existing government programs, perhaps critical in long-term recovery efforts from the COVID-19 pandemic

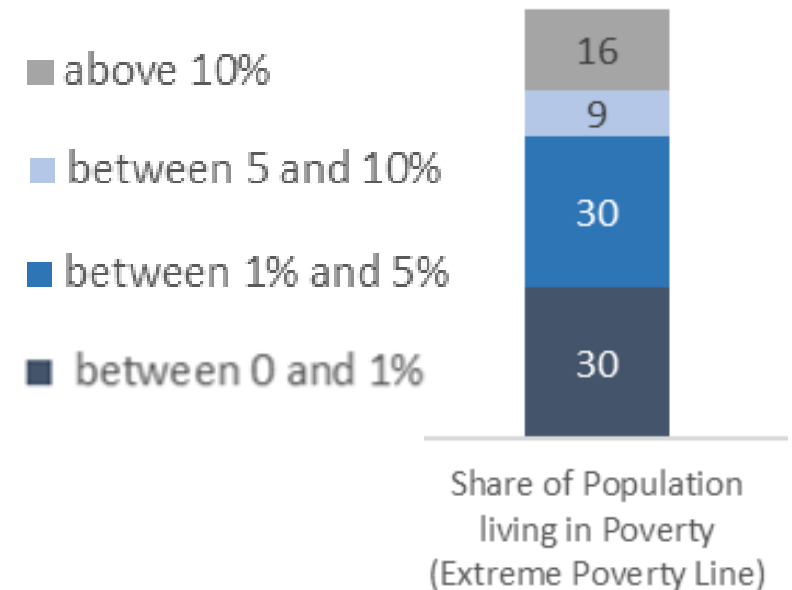
**Distribution Of Entry Points To Scale
(Global, Government-led programs)**



#5: Adaptations to Scale Program Coverage

- Many government programs at a nascent stage of scaling up.
- More than 50% of existing government-led programs have the potential to support between 5 and 10% of the extreme poor.

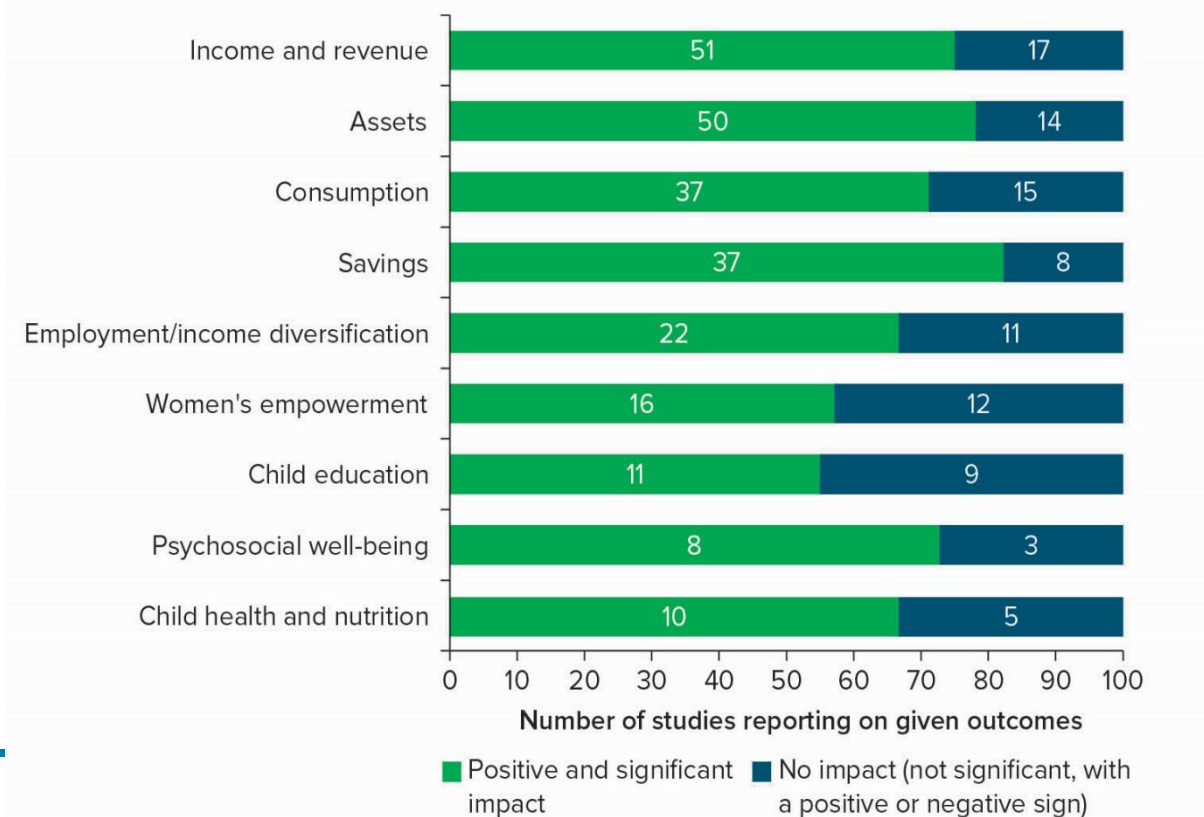
Program Coverage, relative to share of extreme poor



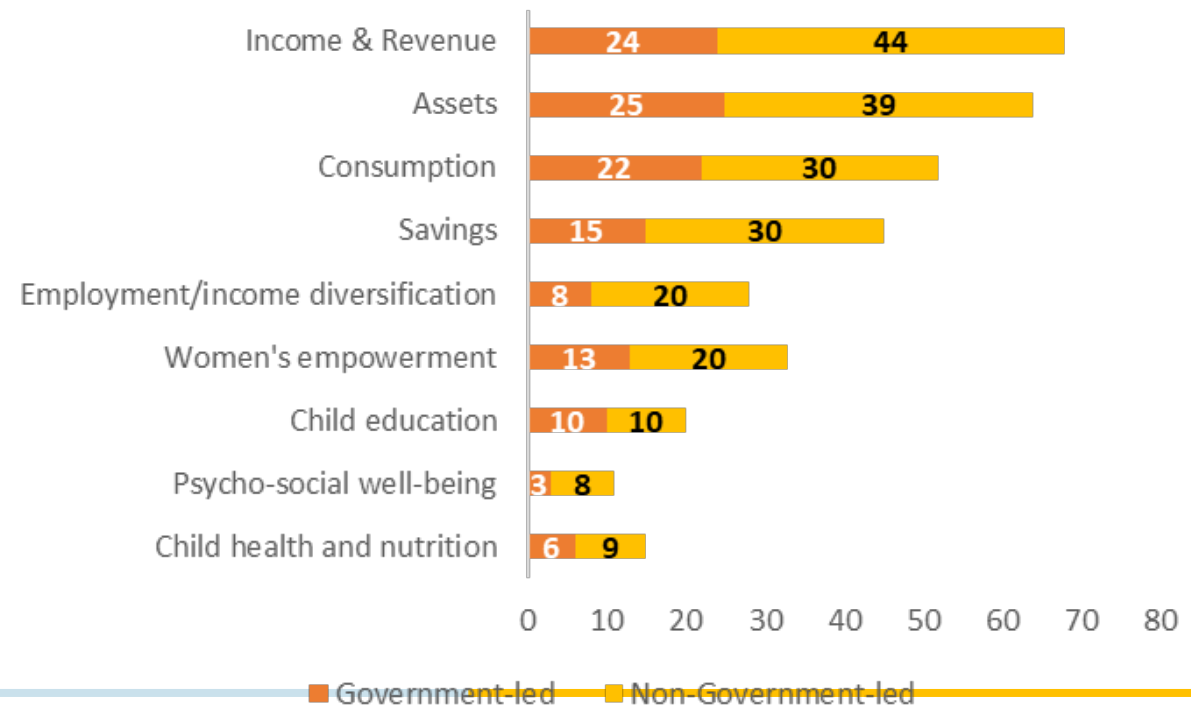
6: Current Evidence on Impact

A review of 80 programs in 37 countries shows the evidence base warrants optimism

Summary of Evidence on Overall Impact

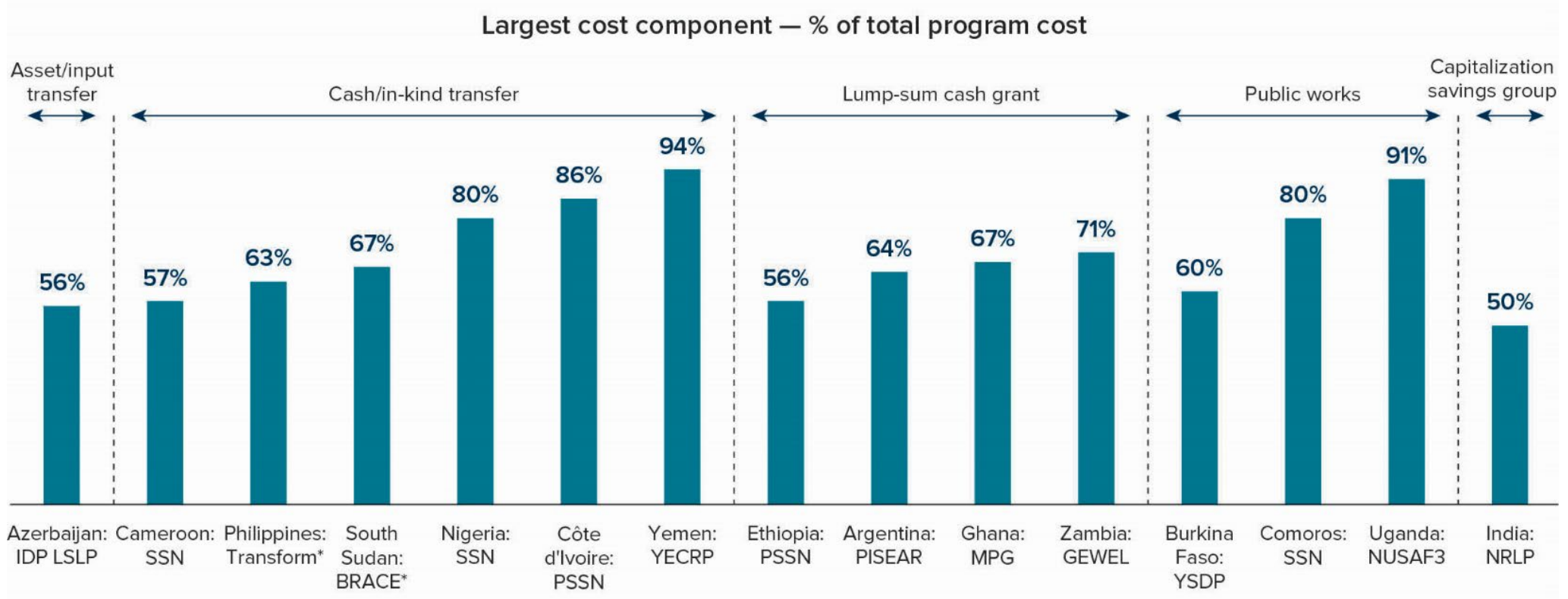


Distribution of Studies Reporting on Specific Outcomes, by Lead Agency



7: Scaled Programs Keep Costs Low

Many multi-sectoral economic inclusion programs feature a single component that drives costs.



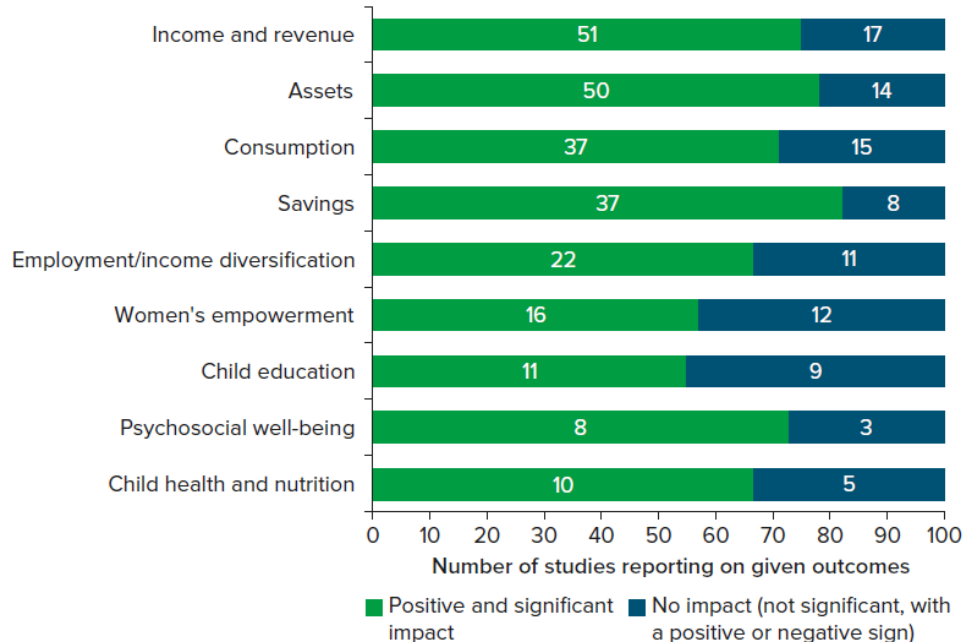
Introduction to the workshop

What are the learning priorities to move economic inclusion to scale?

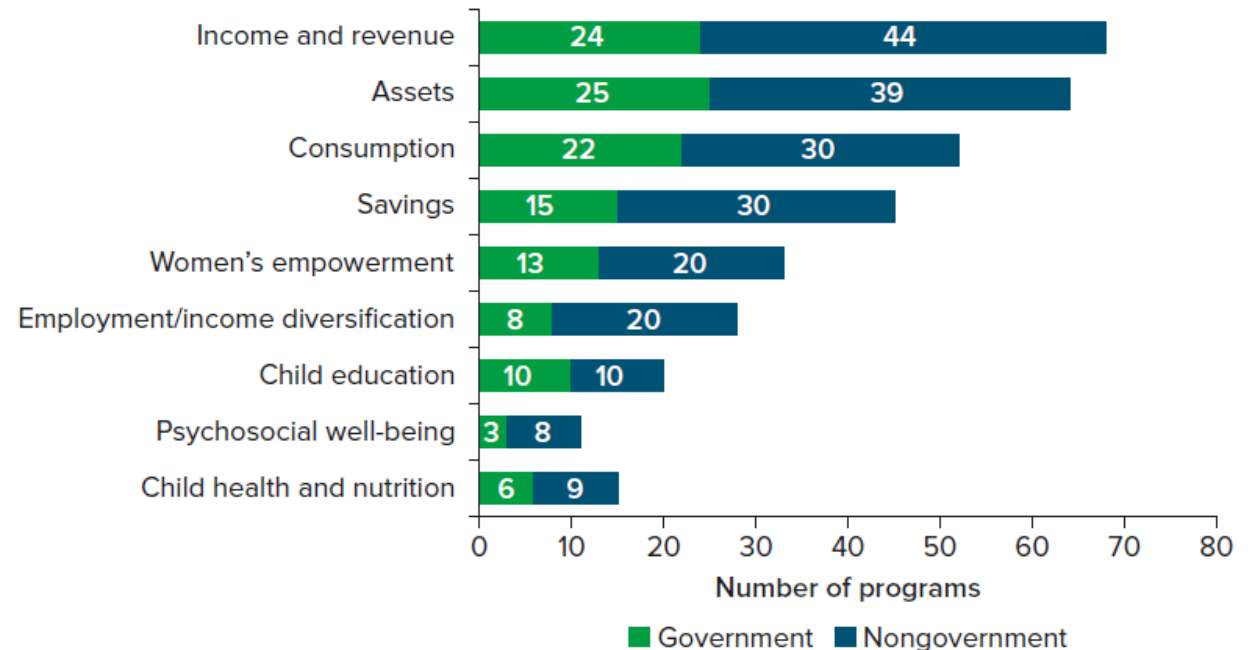
Evidence has been key to advance the economic inclusion agenda

- ❑ Growing evidence shows that multi-faceted economic inclusion interventions can be effective.
- ❑ Most existence impact evidence comes from programs led by NGOs (e.g., classic graduation programs).
- ❑ Governments have been expanding economic inclusion programs worldwide in recent years.

This shift has reignited debates on the impacts, cost-effectiveness and optimization of economic inclusion programs at scale.



Source: State of Economic Inclusion Report 2021



Source: State of Economic Inclusion Report 2021

What are the policy learning priorities ?

Effectiveness at SCALE

- What is the cost-effectiveness of large-scale government-led programs?
- What is the nature and extent of spill-over effects on non-beneficiaries, of local economy or general equilibrium effects?

“SCALABLE” delivery modalities

- How do alternative intervention models or delivery modalities that enhance scalability affect program impact and cost-effectiveness?
 - low-cost vs. high-cost models
 - low-intensity vs. high-intensity models
 - group-based vs individual delivery
 - digital vs. face-to-face delivery
 - NGO vs. government implementation
 - ...

Policy Learning Priorities.. Continued

Bundling of Interventions

- What is the optimal bundle of multi-faceted interventions?
- What is the marginal contribution of interventions in the package to overall impact and cost?
 - what is the value of layering on regular cash transfer programs?
 - which interventions are better replaced by cash?
 - what is the value-added of key elements of the package?
 -

Policy Learning Priorities.. Continued

Tailoring/ Targeting

- How does the cost-effectiveness of economic inclusion programs vary across population groups?
- What modifications in bundle design and delivery are necessary to increase cost-effectiveness for different sub-groups?
 - how to maximize impacts on women's empowerment?
 - how to tailor interventions for refugees?
 - how to tailor interventions for people with disabilities?
 - ...

Learning Priorities.. Continued

Effectiveness across settings

- How to adapt economic inclusion programs across settings?
 - In urban or rural contexts?
 - In FCV/displacement affected contexts?

Resilience and shock- responsiveness

- Do economic inclusion programs improve households' resilience to (climate, conflict, or economic) shocks? How?

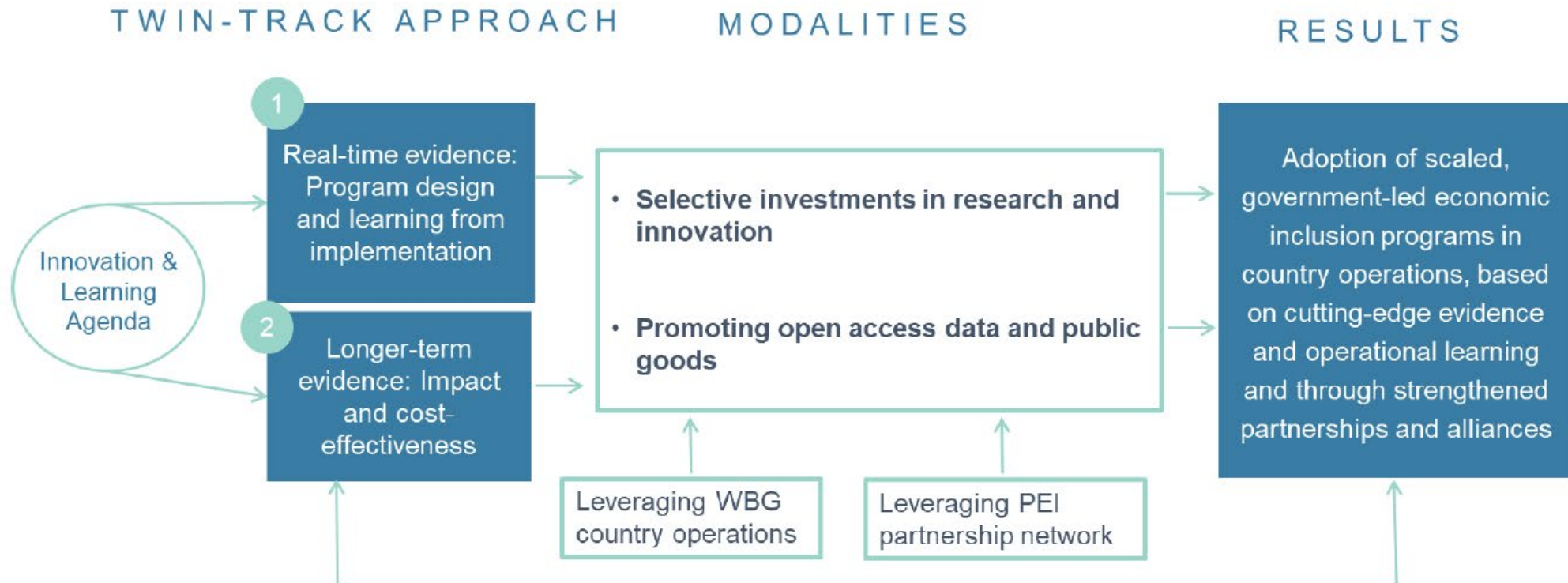
Dynamics over time

- How do impacts vary over time?
- Are impacts sustained in the short to long-term?
- How does it affect cost-benefit analysis?

What will the IE collaborative and workshop entail?

PEI Innovation & Learning (I&L) Hub

- ❑ PEI is strengthening its innovation and learning function, in the form of an I&L Hub, to support evidence-based government-led economic inclusion programming at scale.
- ❑ The Innovation and Learning (I&L) Hub will aim to drive a coordinated evaluative and operational research agenda to address critical gaps, mobilize collective action and knowledge in partnership with PEI’s diverse stakeholders.



Impact Evaluation Collaborative on Moving Economic Inclusion to Scale (led by PEI & DIME in collaboration with partners)

3 complementary lines of work:

Strategic portfolio of studies on impact evidence and cost effectiveness

- Up to 6-10 government-led economic inclusion programs to be supported through leading experts and researchers on designing and implementing robust impact evaluations (e.g., EOI for TTLs and PIs, IE Workshop, Call for Proposals)

Collaborative for innovation and learning

- Organization and delivery of technical and capacity building events with technical partners, government practitioners, academics, funding partners, etc. to further inform the country impact evaluation work.

Promotion of knowledge through public goods, tools, and data

- Deliver global knowledge products and tools to inform the evidence-based scale up of economic inclusion programs through government systems.

Core principles

Building Capacity

Leveraging World Bank Engagements and Expertise

Inclusive of partners

Balance state-of-the art impact evaluation tools with diverse learning approaches

Impact evaluation as a collaboration between policy and research teams

- Opportunities and challenges in integrating impact evaluations in government-led programs
 - Policy team defines the most strategic questions to ensure policy relevance.
 - Research team identifies opportunities to also generate a global public good.
 - Policy and research teams work to find the most suitable design to address the prioritized policy questions in the context of the project operations.
 - Teams consider how to integrate the program implementation and impact evaluation plan.
 - Teams consider complementarities between impact evaluation and other operational learning (M&E, costing, process evaluation, qualitative data,...).

Collaboration during the workshop

- Group work during the clinics : project team (government & WB), matched researchers (international & local), resource people (PEI core team & advisors)
- Opportunities for cross-learning : icebreaker presentation on days 1/2, and presentation of each team's design on day 4
- During the workshop, we will explore how best to foster collaboration beyond the workshop
- And hopefully... lots of informal interactions

Organizational reminders

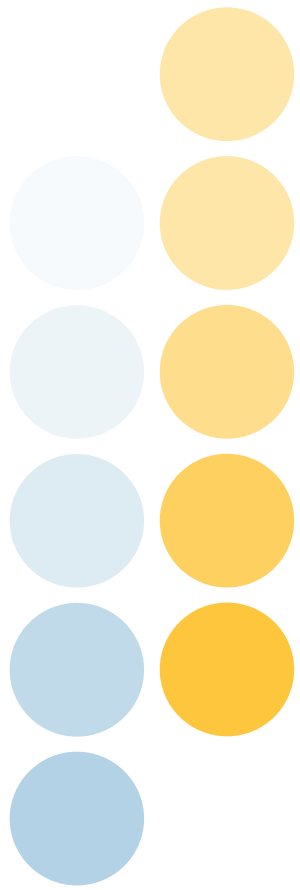
Workshop modalities and agenda

- Plenary sessions – with translations
- Method sessions – separately in French, English and Portuguese
- Ignite sessions – series of short thematic presentations – with translations
- Clinics – work in small groups on an impact evaluation design tailored to each project

Strong Engagement – All sessions have dedicated time allotted for Q&A. All participants are strongly encouraged to ask questions and provide perspective based on your rich experience.

Workshop – some organizational reminders

- COVID mitigation
 - Masks highly encouraged indoor
 - Daily testing (auto-test)
 - Testing before departure
- Social dinner – Tomorrow (Tuesday) Evening.
- Minibar and extras not covered by organization team
- Any questions? Please reach out



**Thank you and
Welcome again!**



PEI FUNDING PARTNERS



Implemented by

