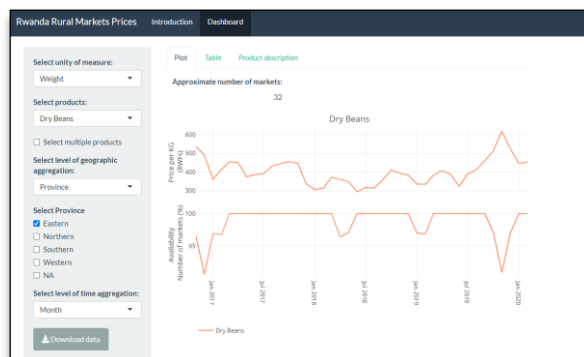


Integrated data systems for evidence-informed decisions

DIME's country programs build deep country-level data ecosystems to optimize operations and inform policy. The spatially-integrated, cross-sector data systems can include administrative data, from land registries, road networks, infrastructure investments, tax payments, social transfers; primary data from surveys, censuses, and crowdsourcing; remote sensing, from nighttime lights, satellite imagery, and sensors. The data systems are tailored to support a process of adaptive research and policymaking and adapted over time to iteratively respond to policy needs. DIME teams create maps and dashboards, tailored to the country context and specific policy interests; these user-friendly outputs



Rwanda Rural Markets Dashboard

allow policymakers to interact directly with the data. A dedicated Analytics team supports development and maintenance of data systems, guaranteeing data quality and secure data transfer, storage and handling.

Investments in data quality

DIME has implemented more than 300 surveys tied to Bank operations over the past 6 years; based on that experience, developed detailed protocols to ensure that all data inputs are high quality. DIME surveys are all conducted electronically, using carefully-designed and tested survey instruments; detailed data quality checks run while fieldwork is ongoing; and data processing is transparently documented to ensure reproducibility. The Analytics team provides technical support to ensure protocols are followed: reviewing survey instrument design, programming and protocols; developing tools to automate data quality controls such as [ietoolkit](#) and [iefieldkit](#); and documenting and publicly sharing best practices through the [DIME Wiki](#) and the [DIME Data Handbook](#).

DIME seeks to empower partners and local researchers to collect high-quality data and conduct rigorous impact evaluations through

- Impact Evaluation Workshops
- Flagship trainings: [Manage Successful Impact Evaluations](#) and [Surveys](#)
- Targeted statistical software training
- [Summer schools](#) for young researchers
- Annual conference on [Measuring Development](#)

