



Follow us on social media:



@GEEAP_



GEEAP

Launched in July 2020, the Global Education Evidence Advisory Panel (GEEAP) is an independent, cross-disciplinary body composed of **leading education experts from around the world**. Its mandate is to provide **succinct, usable, and policy-focused recommendations** to support policymakers' decision-making on education investments in low- and middle-income countries.

The GEEAP is convened jointly by:

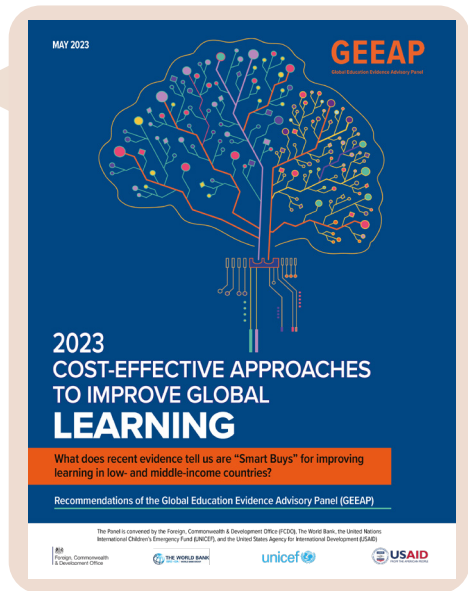


GEEAP reports

“2023 Cost-effective approaches to improve global learning”

This report provides a guide for governments and other stakeholders in low- and middle-income countries about what works in improving learning and education outcomes. This report updates a previous version of the “Smart Buys”.

With this report, the Panel aims to summarize the best, most up-to-date evidence on cost-effectiveness at scale in a user-friendly way for policymakers. It groups many different types of education policies and programs into categories from Great Buys to Bad Buys, along with categories where more knowledge is needed.

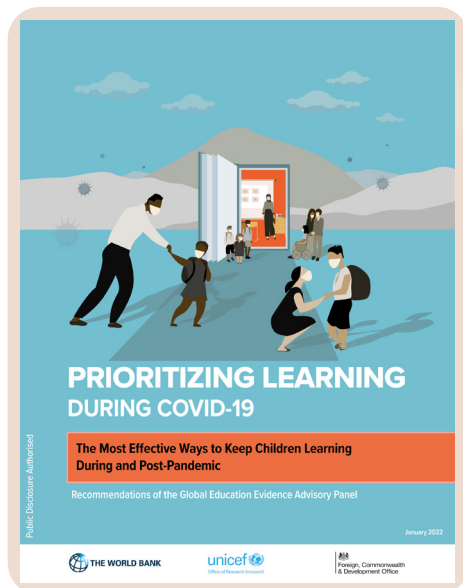


“Prioritizing learning during Covid-19”

This report draws on insights from the latest research to document the impacts of and responses to Covid-19 on the education sector.

It offers guidance on how education systems in low- and middle-income countries can respond to the damage caused by the pandemic and ensure that the learning needs, especially of marginalized and disadvantaged groups, are addressed.

The report provides practical, focused advice for policymakers — advice that represents the consensus recommendations of the panel, based on the best evidence available during a rapidly changing crisis.



Scan to view report

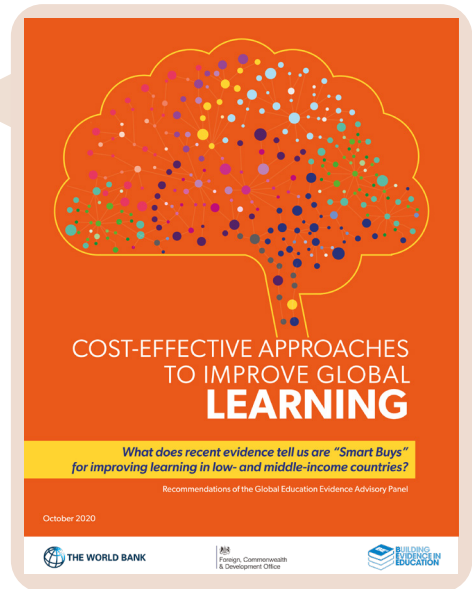
“Cost-effective approaches to improve global learning”

This first report by the GEEAP shares the Panel’s recommendations on “Smart Buys” in education for low- and middle-income countries.

The report groups education programmes into tiers of cost-effectiveness at improving learning outcomes, especially in low- and middle-income countries, to inform countries’ decisions about where to allocate their budget and reform efforts.



Scan to view report





Advisory panel

Kwame Akyeampong, Co-chair of the panel, Professor of International Education and Development, The Open University

Tahir Andrabi, Inaugural Dean, LUMS School of Education, and Professor of Economics, Pomona College

Abhijit Banerjee, Co-chair of the panel, Professor of Economics, MIT

Rukmini Banerji, CEO, Pratham Education Foundation

Susan Dynarski, Professor of Education, Harvard Graduate School of Education

Rachel Glennerster, Associate Professor, Division of the Social Sciences and the College, University of Chicago; former Chief Economist at Foreign, Commonwealth & Development Office (FCDO)

Sally Grantham-McGregor, Emeritus Professor of Child Health and Nutrition, UCL GOS Institute of Global Health

Karthik Muralidharan, Professor of Economics, University of California San Diego

Benjamin Piper, Director, Global Education, Bill and Melinda Gates Foundation

Sara Ruto, Former Chief Administrative Secretary for Education, Kenya

Jaime Saavedra, Former Minister of Education of Peru, currently head of the Education global practice at the World Bank

Sylvia Schmelkes, Professor and Researcher, Research Institute for the Development of Education, Universidad Iberoamericana, Mexico City

Hirokazu Yoshikawa, Professor of Globalization and Education, NYU Steinhardt



GEEAP

Global Education Evidence Advisory Panel