



# What are consequences of migration in EAP?

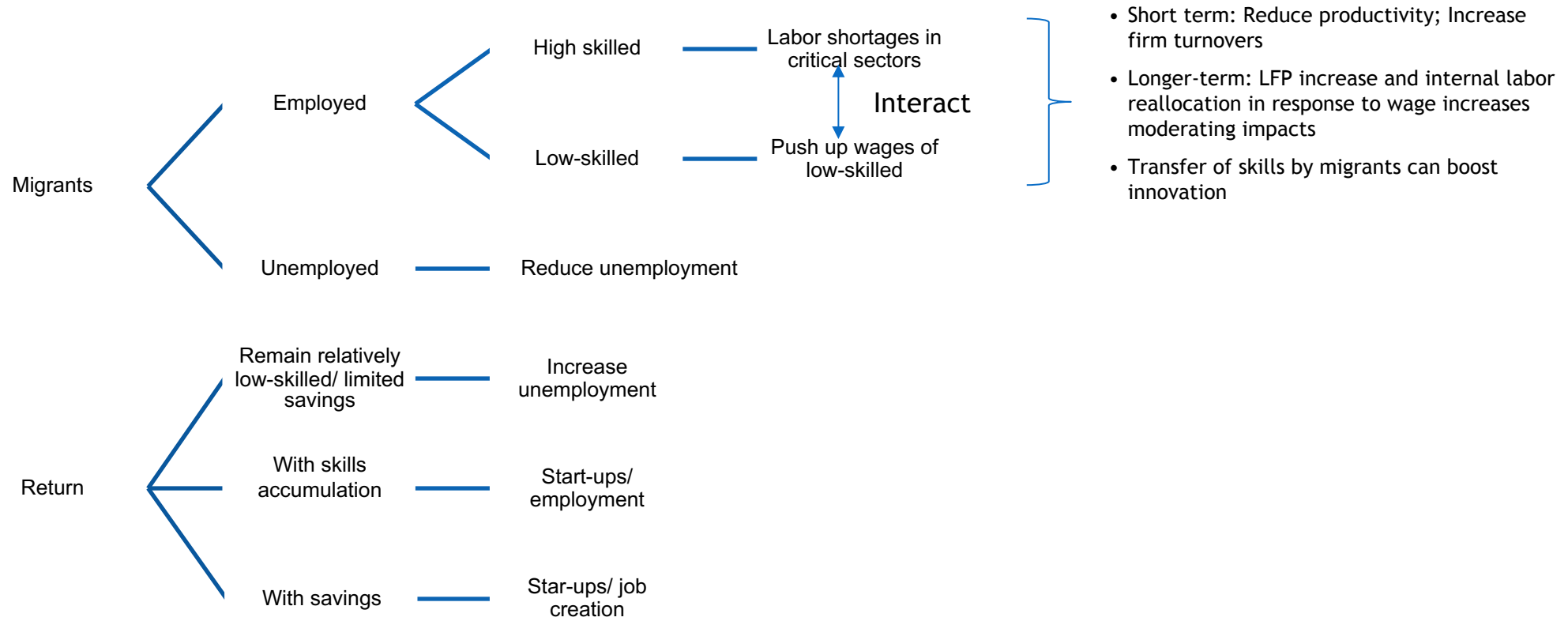
Soonhwa Yi  
The World Bank



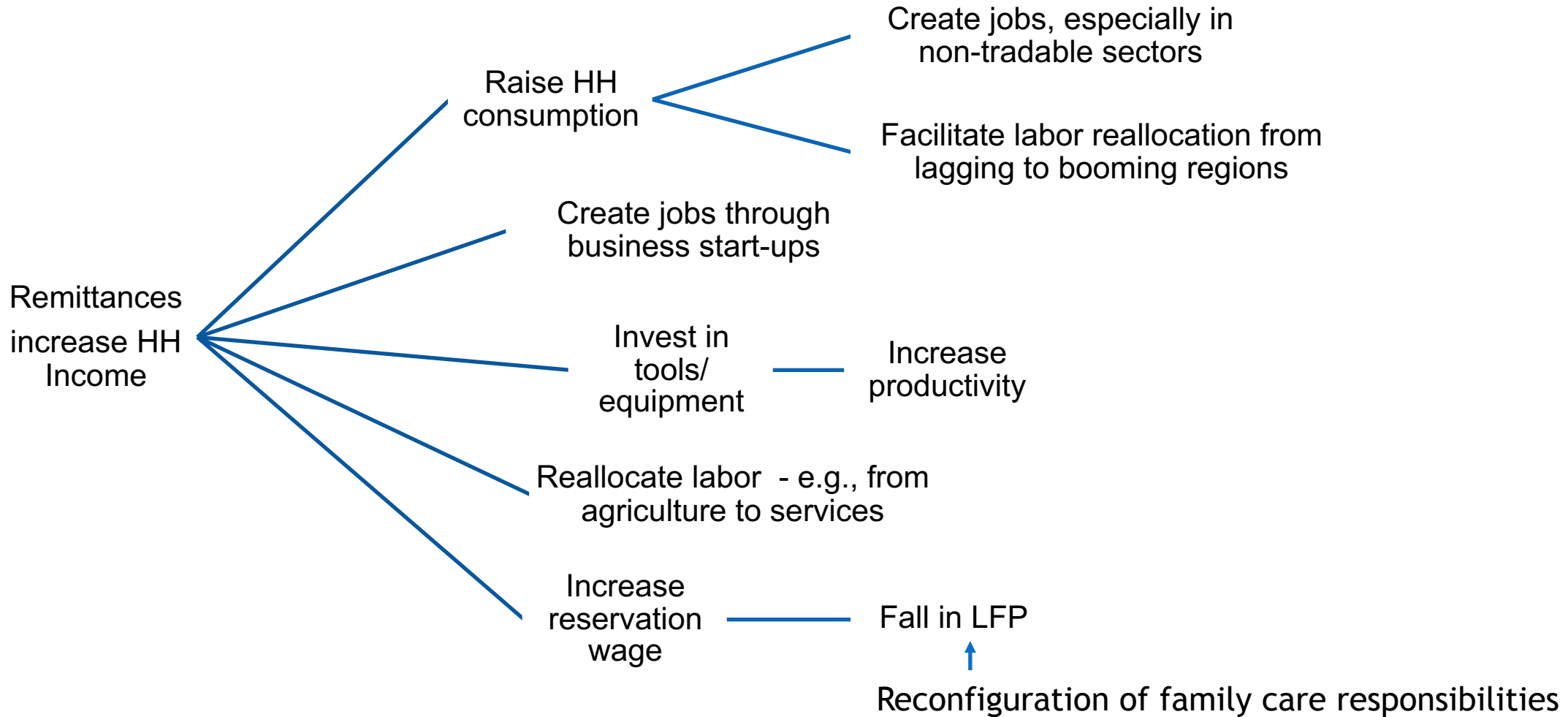
# Impact in origin countries

- Complex
- Depending on
  - Who migrates
  - How long
  - Connectivity between migrants and home countries
  - Remittances and the use of remittances

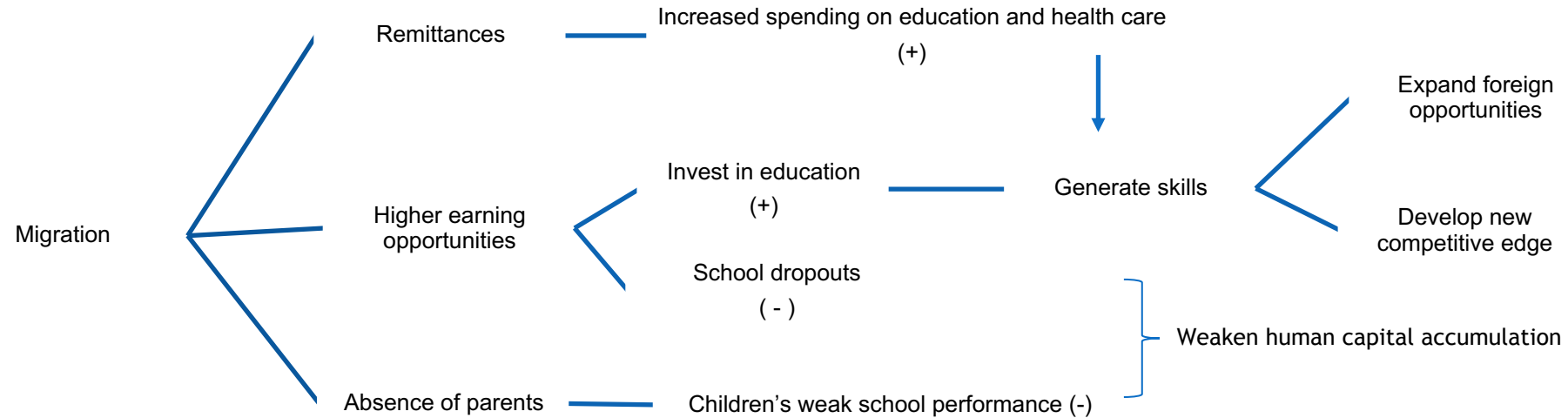
# Labor market impact depends on who migrants are



# Remittances can moderate labor market impacts

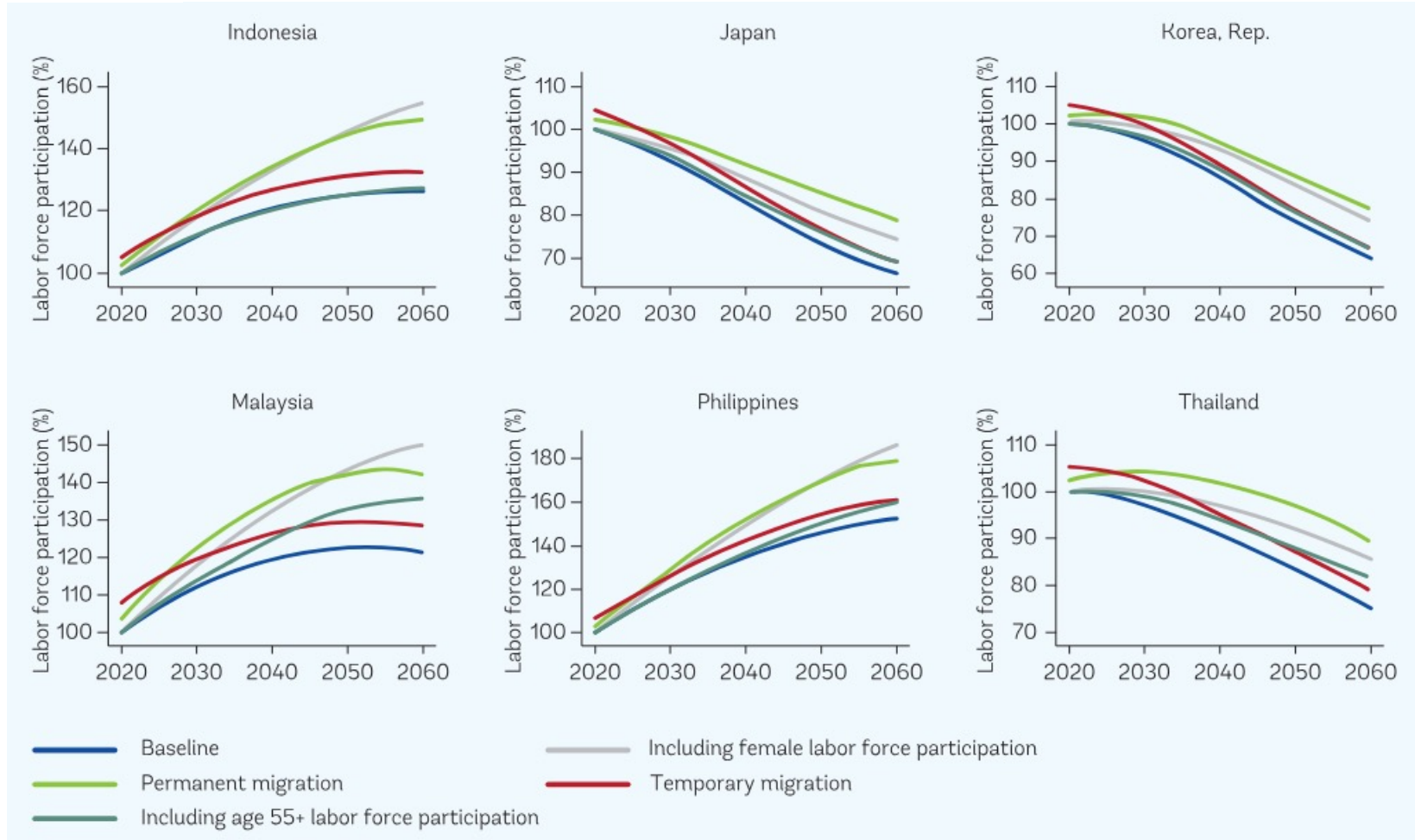


# Impact on human capital development is mixed



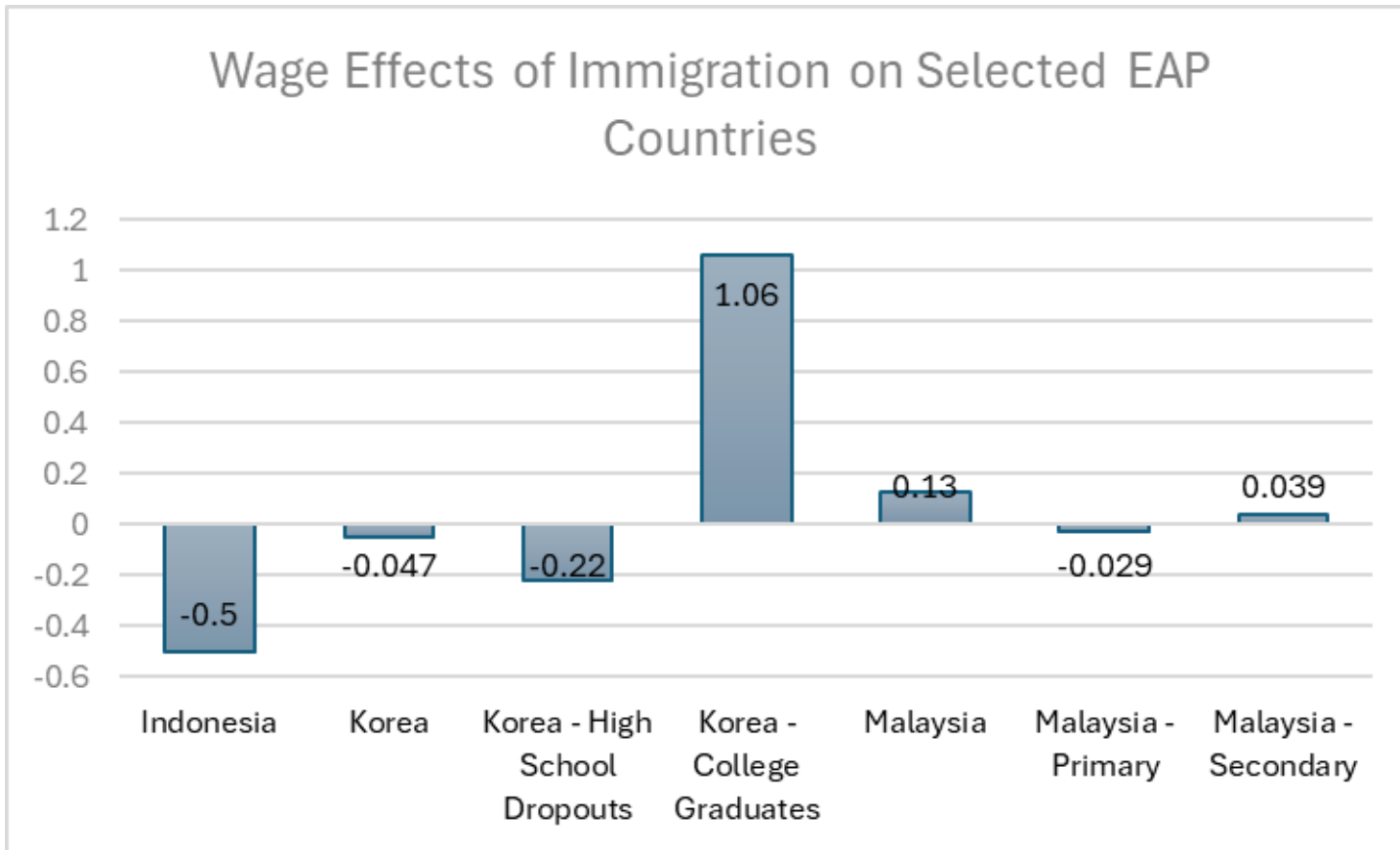
# Impact in Destination countries

- Expand labor force

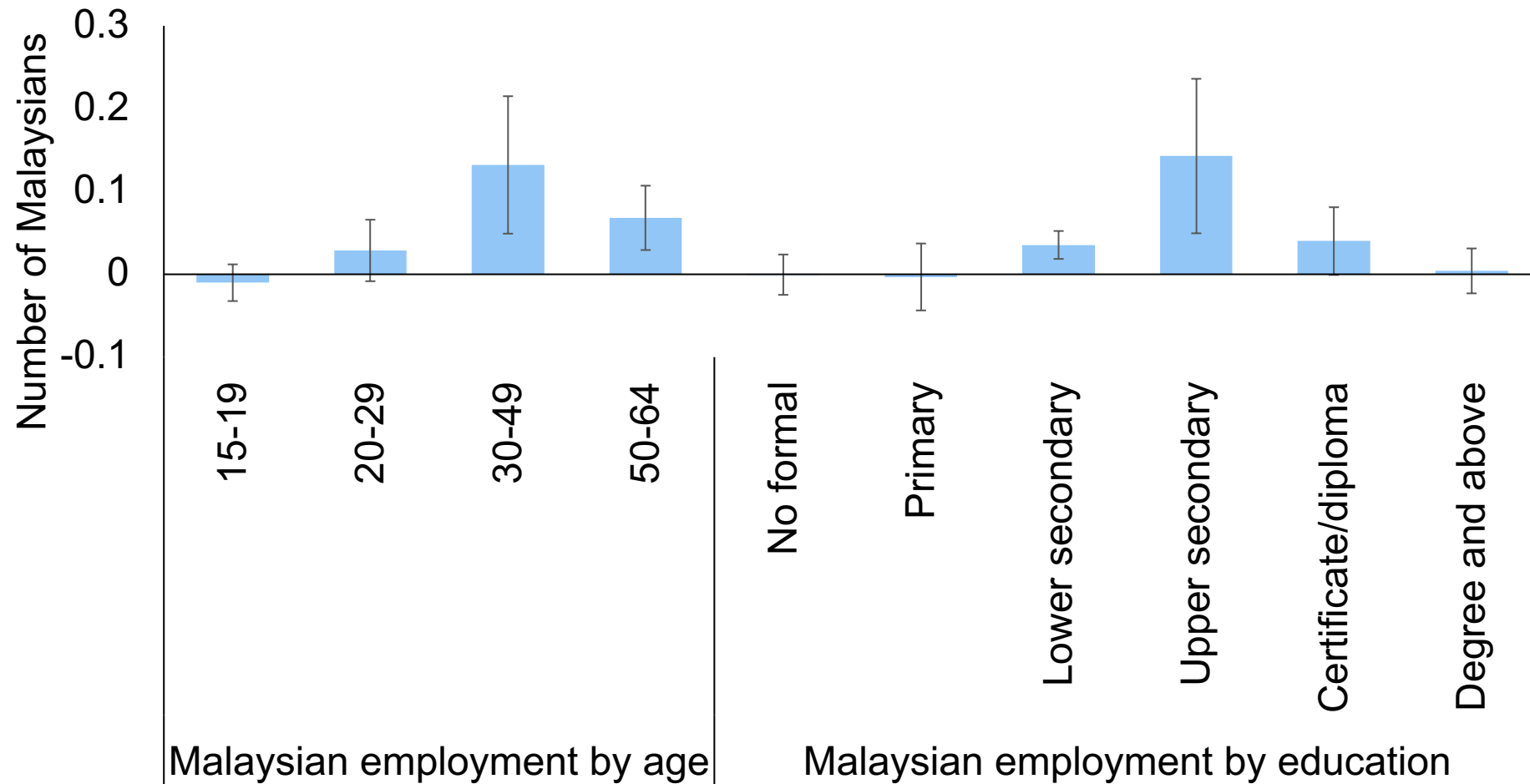


Source: World Bank 2021

# Distributional impact

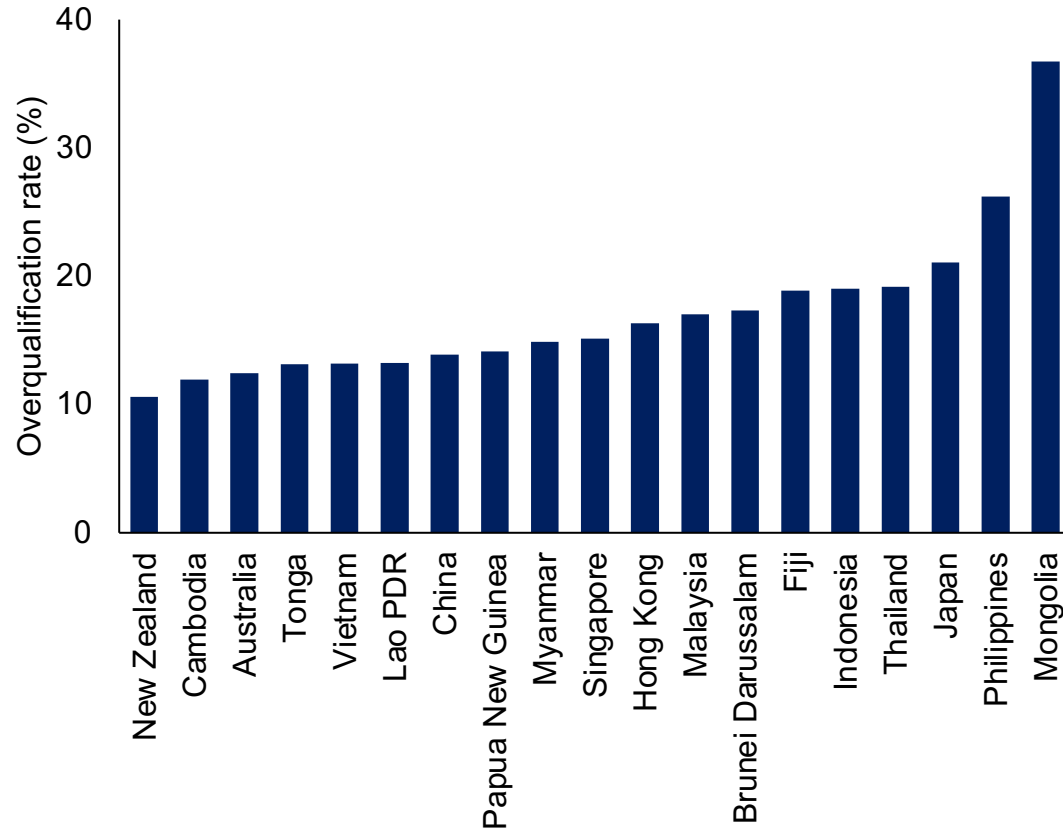


## Change in the number of Malaysians employed due to 1 additional migrant



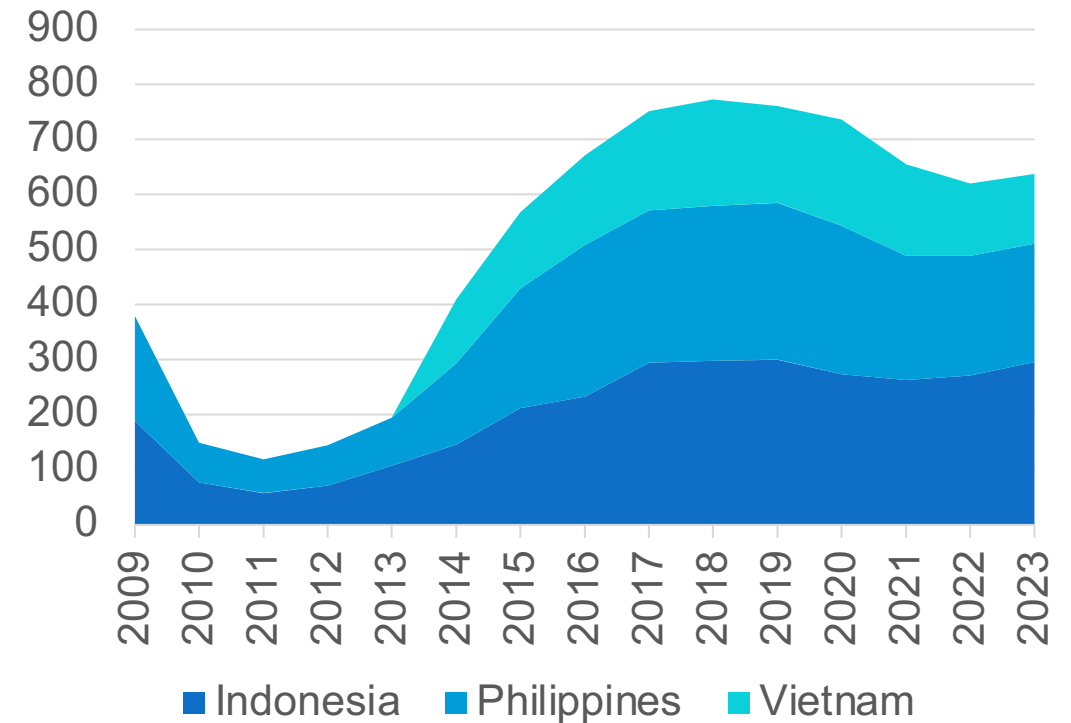


# Brain waste may occur



Source: OECD

Nurse graduates working as care workers in Japan



Source: Japan Immigration statistics

- ❑ **Origin countries**
  - ❑ Facilitate internal migration
  - ❑ Flexible education systems to respond to demand
  - ❑ Expand channels for migrants to transfer skills
  - ❑ Incentives for remittance-leveraged investment
  - ❑ Social protection mechanisms for children without parent(s) owing to migration
  
- ❑ **Destination countries**
  - ❑ Social protection and upskilling of workers who lose out
  - ❑ Recognition of skills and experience gained abroad
  
- ❑ **Regional and bilateral cooperation through facilitating recognition of skills and qualifications**
  - **Global Skills Partnerships**



 **EAST ASIA AND PACIFIC  
MIGRATION**  
CORE COURSE AND CONFERENCE

Thank You!

