



LISTENING TO TAJIKISTAN INCOME

Income

Share of HHs that Reported Income (Latest Round)	45%	L2TJK
Average Share that Received Income in Preceding 10 Days	56%	L2TJK

Jobs

Average Share of HH Heads Working	49%	L2TJK
Migrant HH Head Working in Latest Round	34%	L2TJK

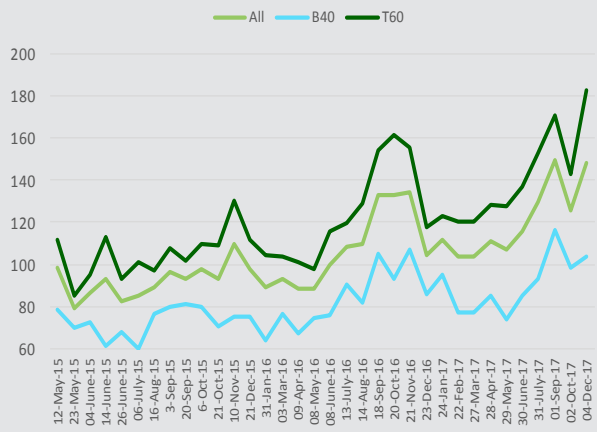
Remittances

Share of HHs Received Remittances in last 10 days (Latest Round)	6%	L2TJK
Average Share of HHs Received any Remittances in past 10 days	12%	L2TJK

Income

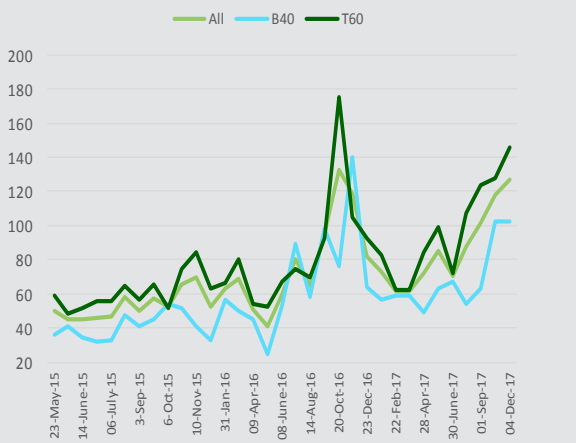
Average Per Capita Real Income

Source: Listening to Tajikistan. Over the preceding 10 days. Currency: Somoni



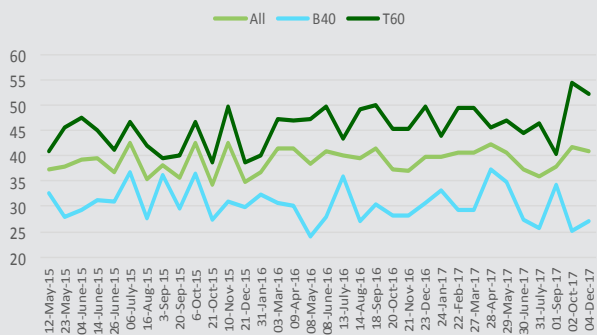
Average Per Capita Income from Agriculture & Self-employment

Source: Listening to Tajikistan. Over the preceding 10 days. Currency: Somoni



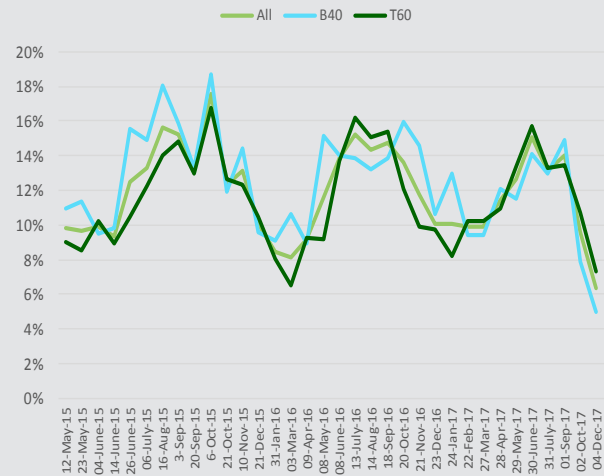
Average Real Per Capita Pension Income

Source: Listening to Tajikistan. Over the preceding 10 days. Currency: Somoni



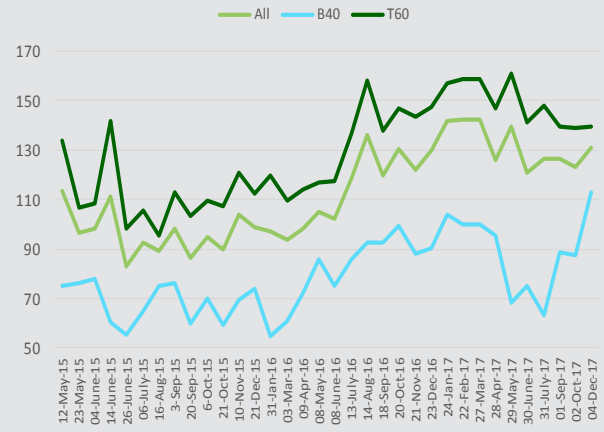
Share of HHs Received any remittances in past 10 days

Source: Listening to Tajikistan. Over the preceding 10 days.



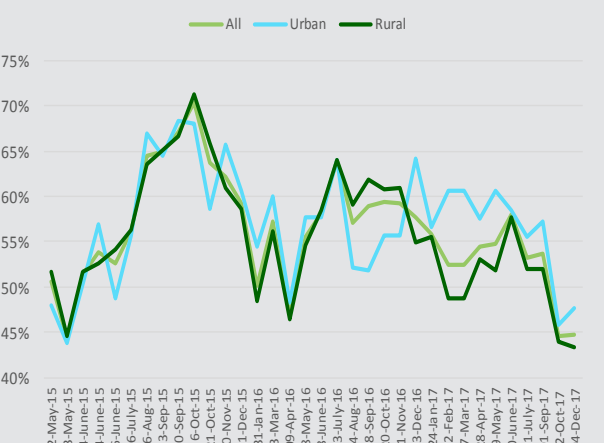
Average Real Per Capita Wage Income

Source: Listening to Tajikistan. Over the preceding 10 days.



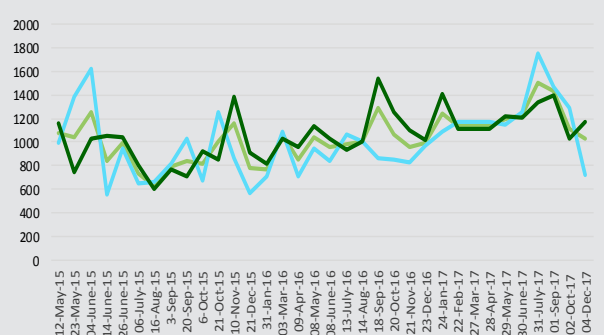
Share of Households Receiving Income in Past 10 Days

Source: Listening to Tajikistan. Over the preceding 10 days.



Household Average Real Income from Remittances

Source: Listening to Tajikistan. Over the preceding 10 days. Currency: Somoni



KEY INDICATORS

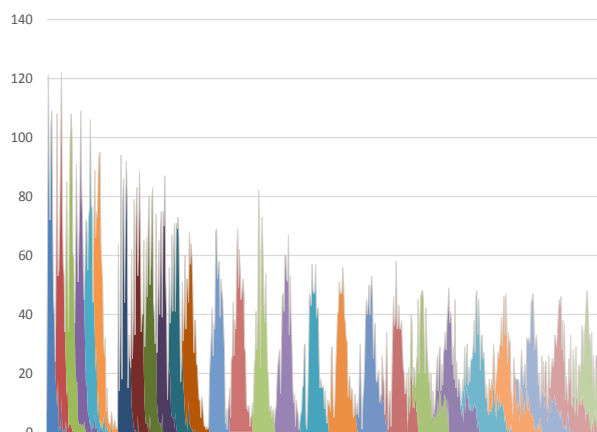
Variable	Subpop	12-May-15-04-June-15	14-June-15-06-July-15	16-Aug-15-20-Sep-15	6-Oct-15-10-Nov-15	21-Dec-15-31-Jan-16	3-Mar-16-9-Apr-16	8-May-16-8-June-16	13-July-16-14-Aug-16	18-Sep-16-20-Oct-16	21-Nov-16-23-Dec-16	24-Jan-17-26-Mar-17	27-Apr-17-28-May-17	29-June-17-30-July-17	01-Sep-17-02-Oct-17	04-Dec-17
Real per capita income (Somoni)	total	88,0	86,9	92,8	100,3	93,4	90,9	94,1	108,9	132,8	119,4	106,2	109,1	122,5	137,5	148,1
Real per capita income (Somoni)	urban	108,2	89,9	95,0	110,8	95,2	103,5	106,2	114,0	137,8	115,3	116,6	118,1	125,6	138,8	144,6
Real per capita income (Somoni)	rural	80,5	85,6	91,9	96,3	92,8	85,5	88,9	106,9	131,1	121,1	101,0	104,3	121,1	136,6	150,1
Real per capita income (Somoni)	b40	73,7	62,9	79,2	75,4	69,9	71,9	75,2	86,2	99,2	96,5	83,1	79,5	88,9	107,3	103,8
Real per capita income (Somoni)	t60	97,5	102,3	102,1	116,3	108,0	102,4	106,8	124,4	157,8	136,7	121,3	128,1	145,0	156,8	182,4
Real household income (Somoni)	total	301,9	337,0	441,6	462,1	353,8	330,3	369,2	465,5	561,7	505,0	394,9	416,7	479,4	477,6	453,9
Real household income (Somoni)	urban	299,1	295,2	375,9	403,8	296,0	305,2	333,4	372,9	424,4	388,3	390,4	393,2	414,5	444,2	391,8
Real household income (Somoni)	rural	302,8	353,9	467,6	485,0	376,6	340,4	383,9	504,1	619,7	555,9	396,8	427,2	510,1	494,1	484,6
Real household income (Somoni)	b40	289,0	277,7	441,8	401,8	292,5	285,9	344,9	430,5	502,3	488,1	357,8	338,0	402,9	436,1	395,9
Real household income (Somoni)	t60	310,5	376,7	441,4	502,4	394,9	360,0	385,3	488,9	601,4	516,3	419,7	469,4	530,5	505,3	492,8
Real per capita wage income (Somoni)	total	102,7	95,5	91,2	96,2	97,9	96,0	103,6	127,4	125,1	125,8	142,0	132,6	123,6	124,8	131,0
Real per capita wage income (Somoni)	urban	118,0	104,2	111,4	109,2	104,9	117,2	124,7	138,3	134,2	150,5	153,2	171,3	148,4	131,6	167,4
Real per capita wage income (Somoni)	rural	92,9	89,8	77,4	87,7	91,8	84,2	92,4	118,9	116,9	107,6	128,6	98,3	103,5	117,7	112,6
Real per capita wage income (Somoni)	b40	76,3	60,2	70,2	66,2	64,2	66,7	80,4	89,2	96,0	89,2	101,2	82,0	69,2	88,2	112,7
Real per capita wage income (Somoni)	t60	116,3	115,1	103,9	112,5	116,1	112,0	117,3	147,1	142,2	145,3	157,9	153,9	144,6	139,1	139,4
Real remittance income (Somoni)	total	1127,9	859,1	627,6	791,0	842,2	815,8	1003,6	1155,7	782,4	766,2	1174,1	1165,7	1362,3	1271,0	1034,3
Real remittance income (Somoni)	urban	1121,5	810,9	769,2	1273,4	612,0	899,9	769,8	910,1	1045,9	908,5	1301,7	1180,8	1466,8	1313,7	969,3
Real remittance income (Somoni)	rural	1143,4	880,8	754,1	884,2	819,6	968,8	1053,9	1012,3	1201,6	999,5	1143,8	1160,1	1340,3	1242,2	1075,9
Real remittance income (Somoni)	b40	1334,9	720,9	836,5	930,6	638,9	900,1	893,5	1035,1	854,4	894,9	1145,7	1162,0	1502,4	1376,4	723,5
Real remittance income (Somoni)	t60	974,3	966,8	694,6	1050,7	861,6	990,4	1085,1	970,4	1401,1	1058,0	1215,1	1164,8	1271,9	1214,4	1174,7

Source: Listening to Tajikistan

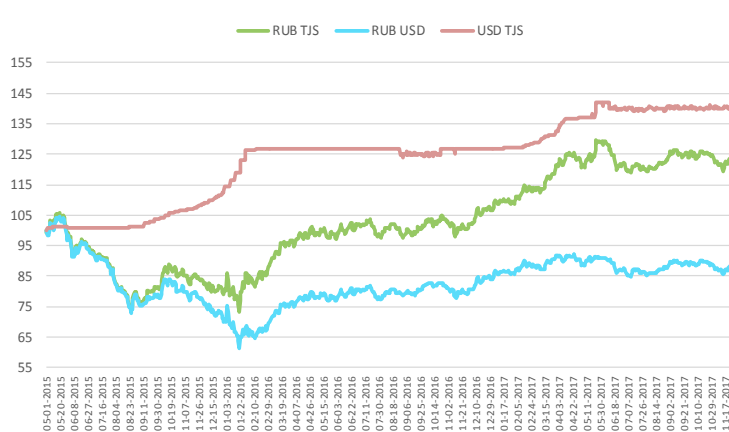
Data Description

The Poverty and Equity team of the World Bank launched the Listening-to-Tajikistan survey in 2015 to monitor the challenges faced by vulnerable households in the country. The survey instrument includes questions on a variety of themes, including income, employment, migration, wellbeing, and services. The sample includes 800 households which were drawn from a nationally representative face-to-face survey conducted in the spring of 2015. Participating households were initially interviewed in 10-day intervals, moving to two-week intervals following the sixth wave of data collection. Responses reported in this note are weighted for national representativeness and for non-response, and households that refused to participate (or otherwise drop out) were replaced with another household from the same primary sampling unit. The B40 and T60 classification for the L2T survey are defined with respect to the baseline round of the survey, and are not updated in each round.

Interviews Completed by Date and Round



Exchange Rates (1 May 2015=100)



Reference: HH—Households
T60—Top 60%

L2TJK—Listening2Tajikistan
B40—Bottom 40%

F2F—Face-to-Face
Meta—Meta Data

ADDITIONAL INFO

The support of UK-DFID in the design phase of this instrument is gratefully acknowledged.
Project Webpage: <http://www.worldbank.org/en/country/tajikistan/brief/listening2tajikistan>

QUESTIONS?

Contact Joao Pedro Wagner De Azavedo (jazevedo@worldbank.org), William Hutchins Seitz (wseitz@worldbank.org), Alisher Rajabov (arajabov@worldbank.org)



WORLD BANK GROUP
Poverty & Equity