

FORESTS FOR *green, resilient, inclusive* development IN NEPAL

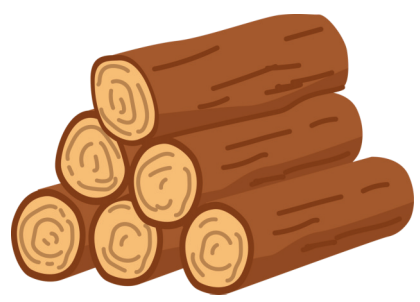


Improved data and analytics for sustainable forest management in Nepal

Global Program on Sustainability (GPS) Core Implementing Country (CIC) grant from Mar 2022 to Dec 2024

NATIONAL SOCIOECONOMIC FOREST DATA & ANALYTICS

Understanding the contribution of forests to livelihoods



In recent years, households (HHs) have autonomously planted trees on their agricultural lands. Yet HHs' access to public and private forests has not been quantitatively examined

Partnership with Nepal Statistics Office (NSO)

For the first time, a nationally representative forest survey covering 3,204 HHs was carried out as part of the Fourth Nepal Living Standards Survey (NLSS-IV)

Nexus between forests, gender, poverty, and inclusion



- Results suggest that forests are important safety nets for the poorest
- HHs have afforested on private land, reducing pressure on public forests
- A larger share of public forest users belong to socially disadvantaged groups
- Women are predominantly responsible for collecting forest products
- Results support better targeting of interventions on public and private forests to enhance livelihoods

SUBNATIONAL BIOPHYSICAL FOREST INDICATORS

Forest cover has increased over time to 45%, yet....



Refined forest maps representative at the municipality level are not available, posing a critical data gap for local-level sustainable forest management and planning

Partnership with Forest Research and Training Center (FRTC)

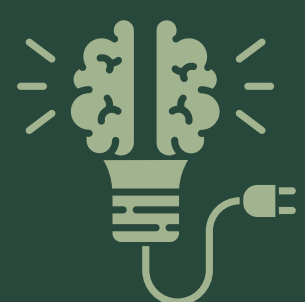
Annual biophysical forest maps and indicators on forest cover and condition are being developed by FRTC for all 753 municipalities with technical support from ICIMOD

Enabling forest sector federalism



- Provides critical data to support the development and update of subnational forest management plans
- Enables performance-based transfers of forest royalties from federal to provincial and municipal levels
- Institutionalizes the regular production of refined forest maps
- Builds on the Terai Arc Landscape Emissions Reduction Program, contributing to access to results-based carbon and climate financing

KEY PROGRESS AND RESULTS



Learning & Knowledge Exchange

- Capacity building activities such as trainings and study tours carried out to ensure the continuity of data production
- Webinars organized to share lessons with global audiences



Institutionalization of Forest Evidence Building

- Demand-based Bank advisory services
- Technical support from the International Centre for Integrated Mountain Development (ICIMOD)
- Technical review committees established to ensure coordination and ownership



Informing Forest Policies and Investments

- Informed the Country Climate Development Report & Country Partnership Framework
- Informs the implementation of the WB-financed Forests for Prosperity Project; Green Resilient Inclusive Development Policy Credits; Dedicated Grant Mechanism; among others