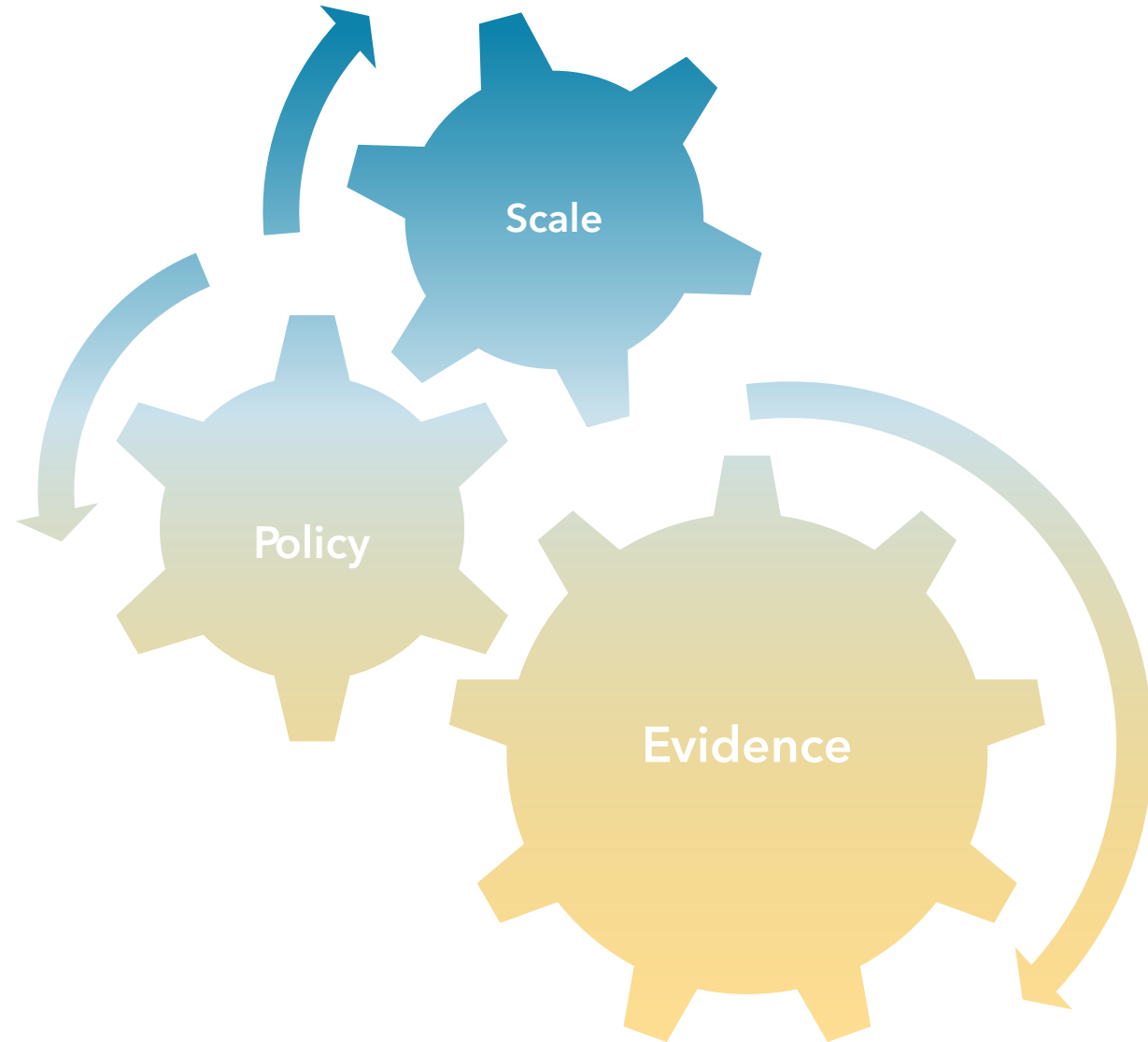


PEI Impact Evaluation Workshop

Moving Economic Inclusion to scale





Opportunities and Challenges in Scaling up Economic Inclusion Programming

Malawi: Social Support for
Resilient Livelihoods-SSRLP

ICEBREAKER: **MALAWI: Social Support for Resilient Livelihoods-SSRLP**

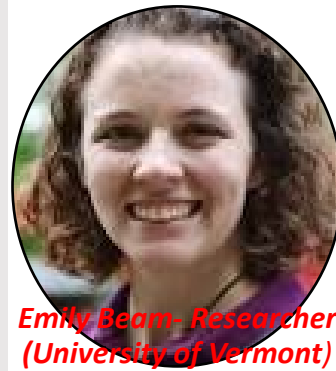
Delegation members



Massimo Sichinga;
WB Focal Person,
Social Protection
Specialist



Martin Mwale-
Local Researcher
(University of
Stellenbosch)



Emily Beam- Researcher
(University of Vermont)



Dalitso Kalimba, Deputy Director
Ministry of Finance and Economic
Affairs-Poverty Reduction and Social
Protection



Allan Jere, Principal Economist;
Ministry of Finance and Economic
Affairs- Poverty Reduction and
Social Protection



Mirriam Saiwa- Enterprise Development Specialist;
National Local Government Finance Committee
(NLGFC)

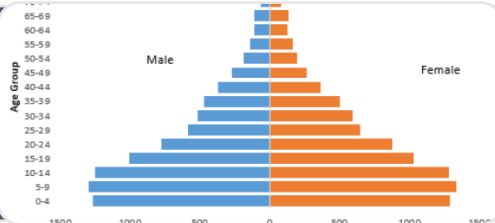


Susan Kondowe- Operations Manager, Comsip-
Cooperative Union

- **Primary client agency:** Ministry of Finance and Economic Affairs
- **Overall Project Implementing agency:** National Local Government Finance Committee
- **Economic Inclusion lead agencies:** COMSIP Cooperative Union & Ministry of Gender, Community Development and Social Welfare
- Other supporting agencies implementing SCT & PWP

ICEBREAKER: Malawi; Social Support for Resilient Livelihoods-SSRLP

Background and context

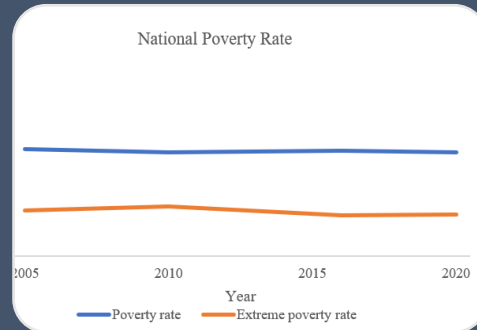


High Population

- Population: 17.5 Million (84% live in rural area, 51% females, 51% below 18 years)
- Average household size: 4.3; annual Pop growth rate: 2.9%, Pop density; 186 persons per square kilometre in 2018- (National Statistical Office, 2018 Population and Housing Census Report, 2019)

Stagnant Poverty and increased Vulnerability

- High poverty levels; 70% of the people live below the international poverty line of US\$1.90 per day—95% of whom live in rural areas and 20.5% live in extreme poverty and Poverty headcount rates of female headed households are around 5 percentage points higher than male headed households
- Drivers of poverty vulnerability: high population growth with a youth bulge, accelerating environmental degradation and Vulnerable to weather-related shocks (incidence of weather-related shocks (drought or floods) increased from 25.8% to 35.1% between 2010/11 and 2016/17, which drive many households into temporal or permanent poverty)



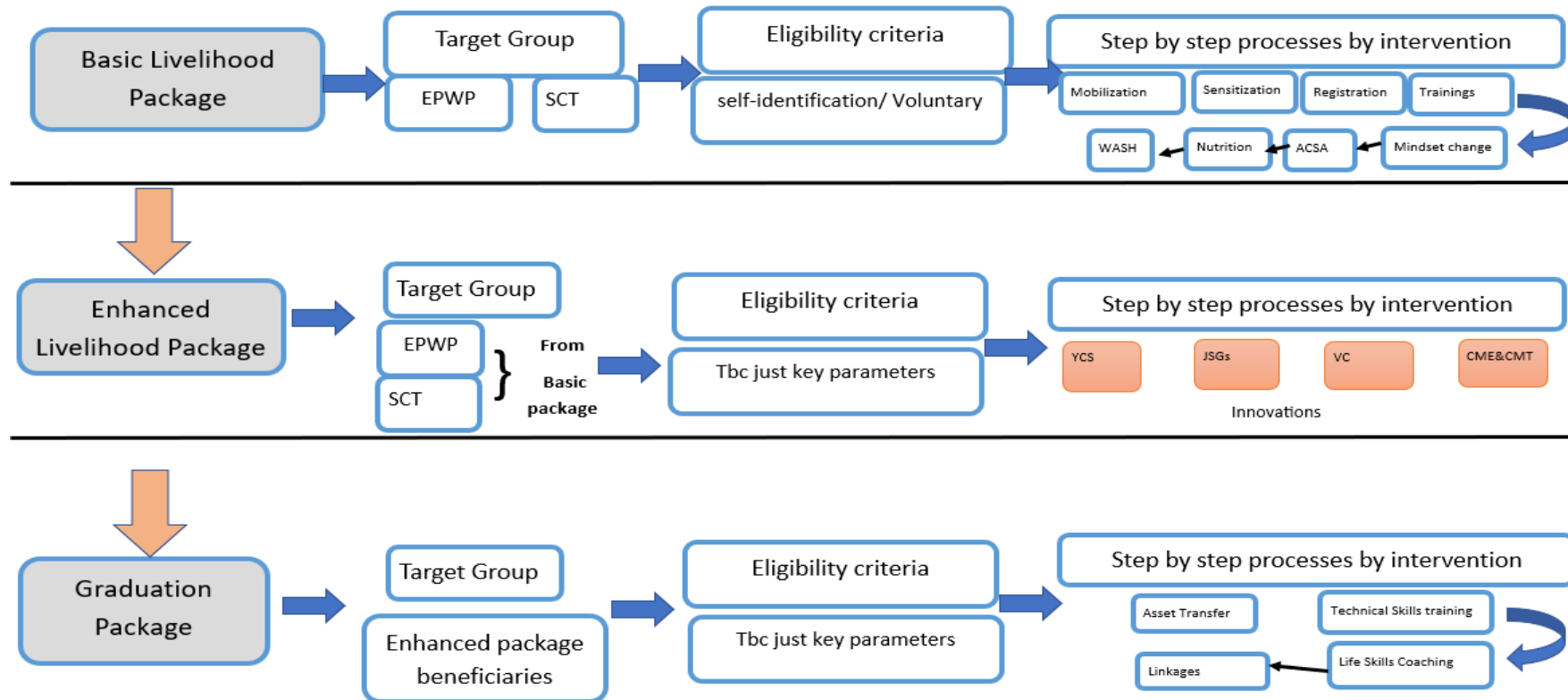
SSRLP Economic inclusion Operation

- PDO: improve resilience among the poor and vulnerable population and to strengthen the national platform for safety nets in the Republic of Malawi
- Cash Plus model: Economic inclusion interventions implemented jointly with both Social Cash Transfers (SCT) and Climate Smart Public Works (CSPWP) informed by various evaluation studies highlighting that SCT is impactful but there is need for increased access to complementary intervention to magnify impacts of SCTs



ICEBREAKER: *Malawi: Social Support for Resilient Livelihoods*

Project innovations: Economic inclusion packages: aims at enhancing the productive capacity of SCTP and EPWP beneficiaries to increase their income and assets, build human capital and promote social inclusion; Target at least 25% youth and 60% women for enhanced package



CME: Cooperative Member Education
 CMT: Cooperative Management Training
 EPWP: Enhanced Public Works Program
 JSG: Joint Skills Groups
 SCTP: Social Cash Transfer Program
 VC: Value Chains
 YCS: Youth Challenge Support

Scale-up/Scalability

Scale up timelines and coverage-2020-25

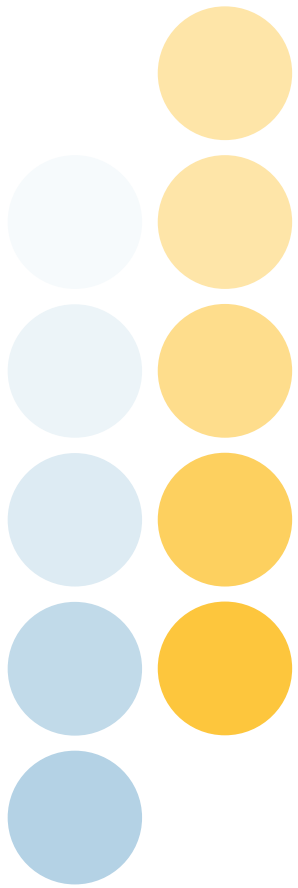
- Basic livelihoods: Target 70, 000 hh, progress 60%
- Enhanced: Target 59,000 hh, progress; to commence in 2022
- Graduation: Target 8,400, progress; to commence in 2022

Opportunities and Challenges

- Gradual scale up of livelihoods interventions : 2020-2025 provides room for learning
- Project AF to increase number of hh to be targeted for all packages with national coverage
- Challenge: Delayed targeting of SCTP and EPWP beneficiaries to affect livelihoods interventions

Questions for scale up

- **Bundling of Interventions:** What is the appropriate/optimal bundle for a given context? What is the marginal contribution of constituent interventions to overall impact and cost?
- **Resilience and shock-responsiveness:** Do economic inclusion programs improve households' resilience to (climate, conflict, or economic) shocks? How?
- **Scalable delivery modalities:** How do alternative delivery modalities that enhance scalability affect program impact and cost-effectiveness? e.g. individual vs. group-based provision of key components, Low-intensity vs. high-intensity- issue of case workers vs Community Development Assistants



Thank you!

Presenter's name
Contact



PEI FUNDING PARTNERS



Implemented by

