

CALM\_watersheds\_2023\_08\_23

2022

2023

Junk\_Sidama\_river\_channels\_threshold\_5

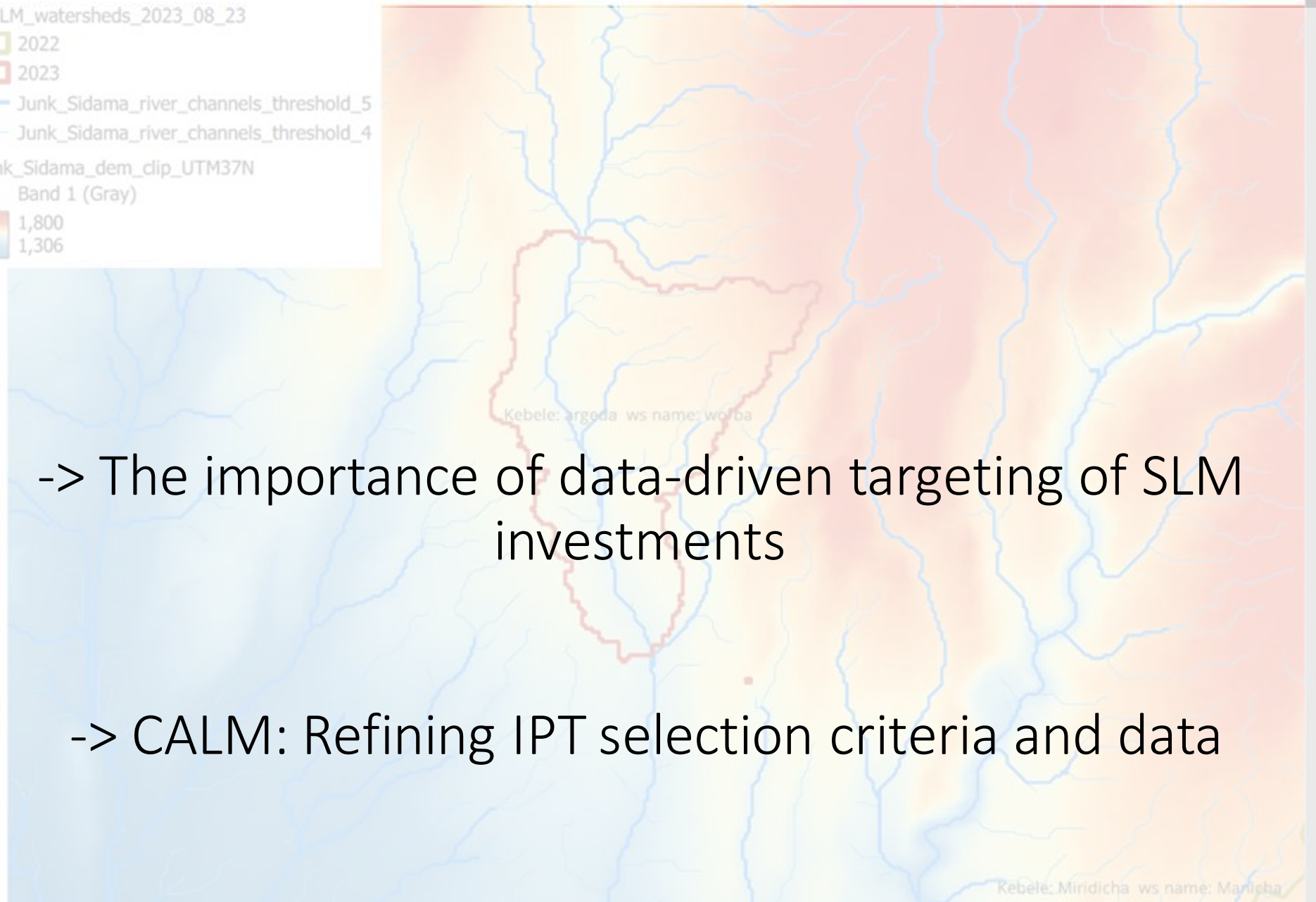
Junk\_Sidama\_river\_channels\_threshold\_4

junk\_Sidama\_dem\_clip\_UTM37N

Band 1 (Gray)

1,800

1,306



-> The importance of data-driven targeting of SLM investments

-> CALM: Refining IPT selection criteria and data

# Why data driven:

- Data-driven targeting of SLM investments can help to ensure that resources are directed to where they are most needed and where they will have the greatest impact.
- This is important because:
  - Land degradation is a complex problem with a variety of causes and impacts.
  - SLM interventions are not one-size-fits-all and need to be tailored to the specific needs of each location.
  - Resources for SLM are limited, so it is important to use them efficiently.

# Benefits

- Data-driven targeting of SLM investments can lead to a number of benefits, including:
  - Increased effectiveness of SLM interventions
  - Improved efficiency of SLM investments
  - Enhanced transparency and accountability in SLM decision-making
  - Greater stakeholder engagement in SLM planning and implementation

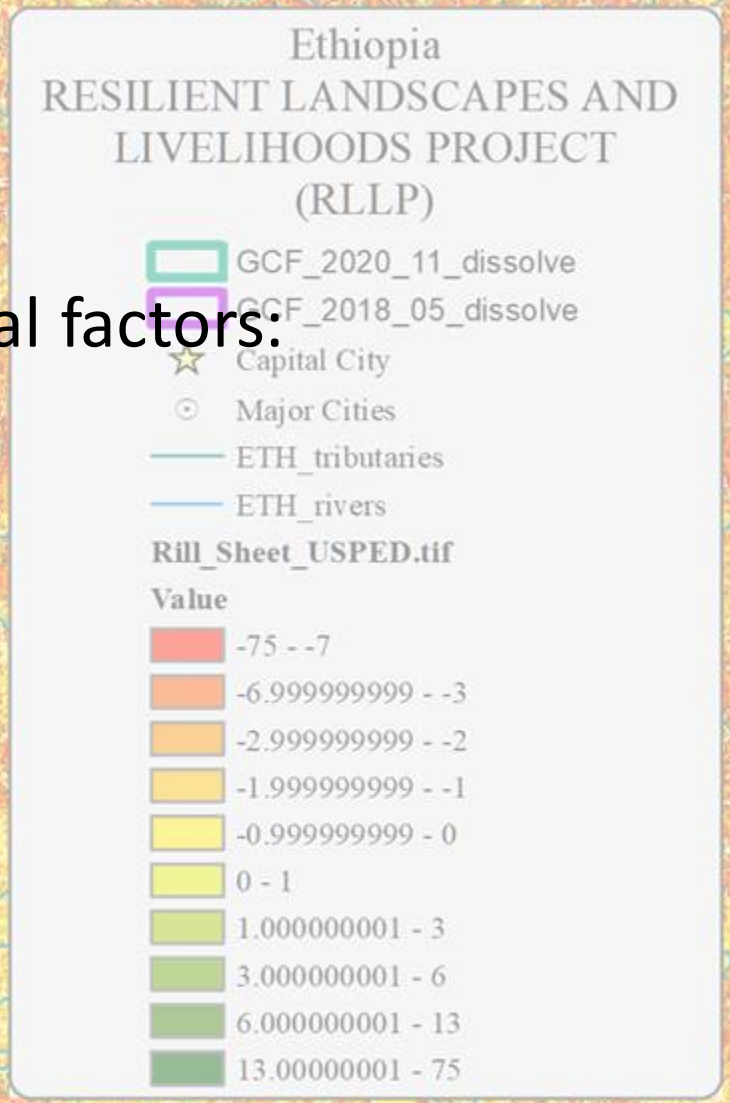
# Challenges

- There are a number of challenges to data-driven targeting of SLM investments, including:
  - Lack of data availability and quality
  - Difficulty in accessing and sharing data
  - Capacity constraints in using data for decision-making



# Past experiences

- Selection of RLLP II watersheds considered several factors:
  - Soil erosion
  - Climate change vulnerability

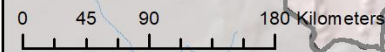
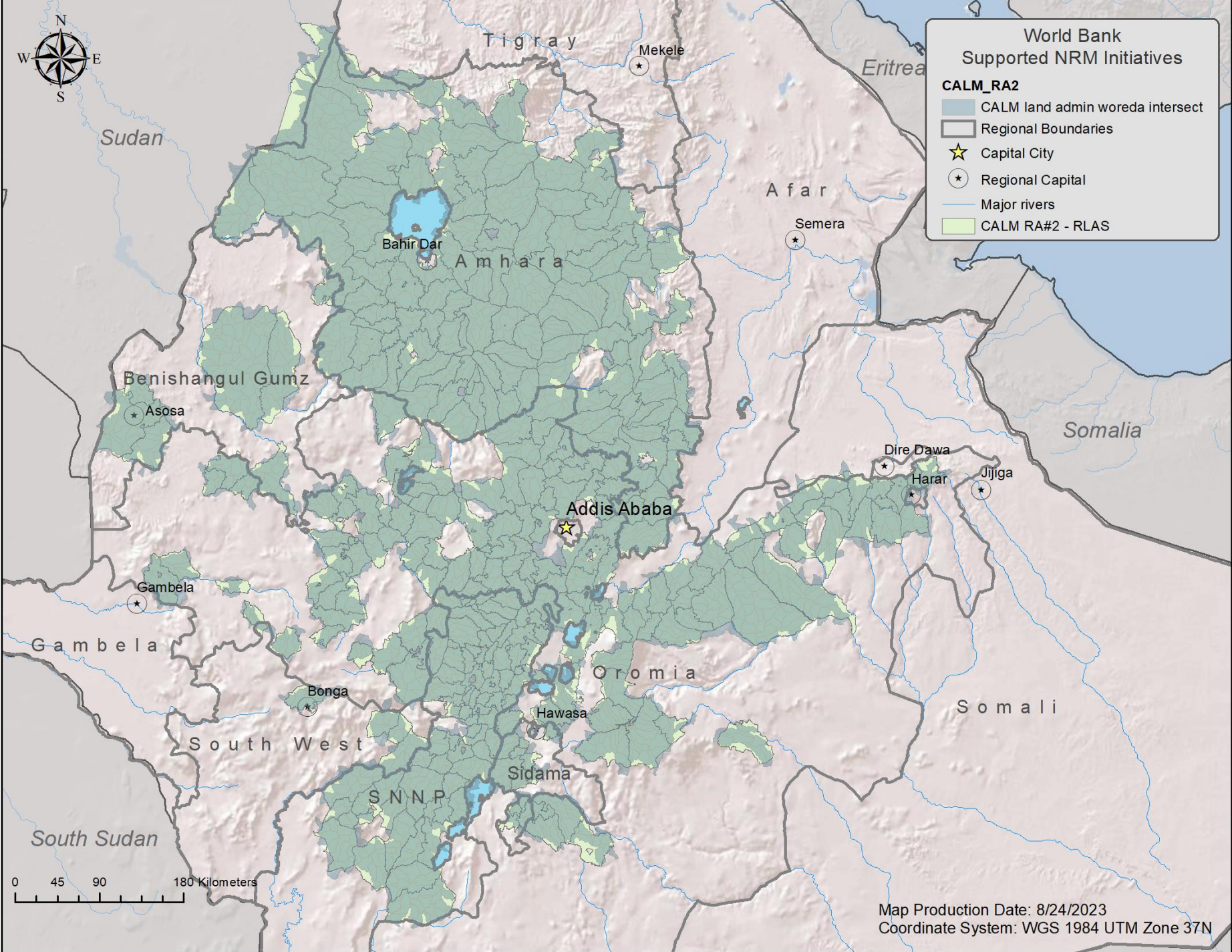


# CALM

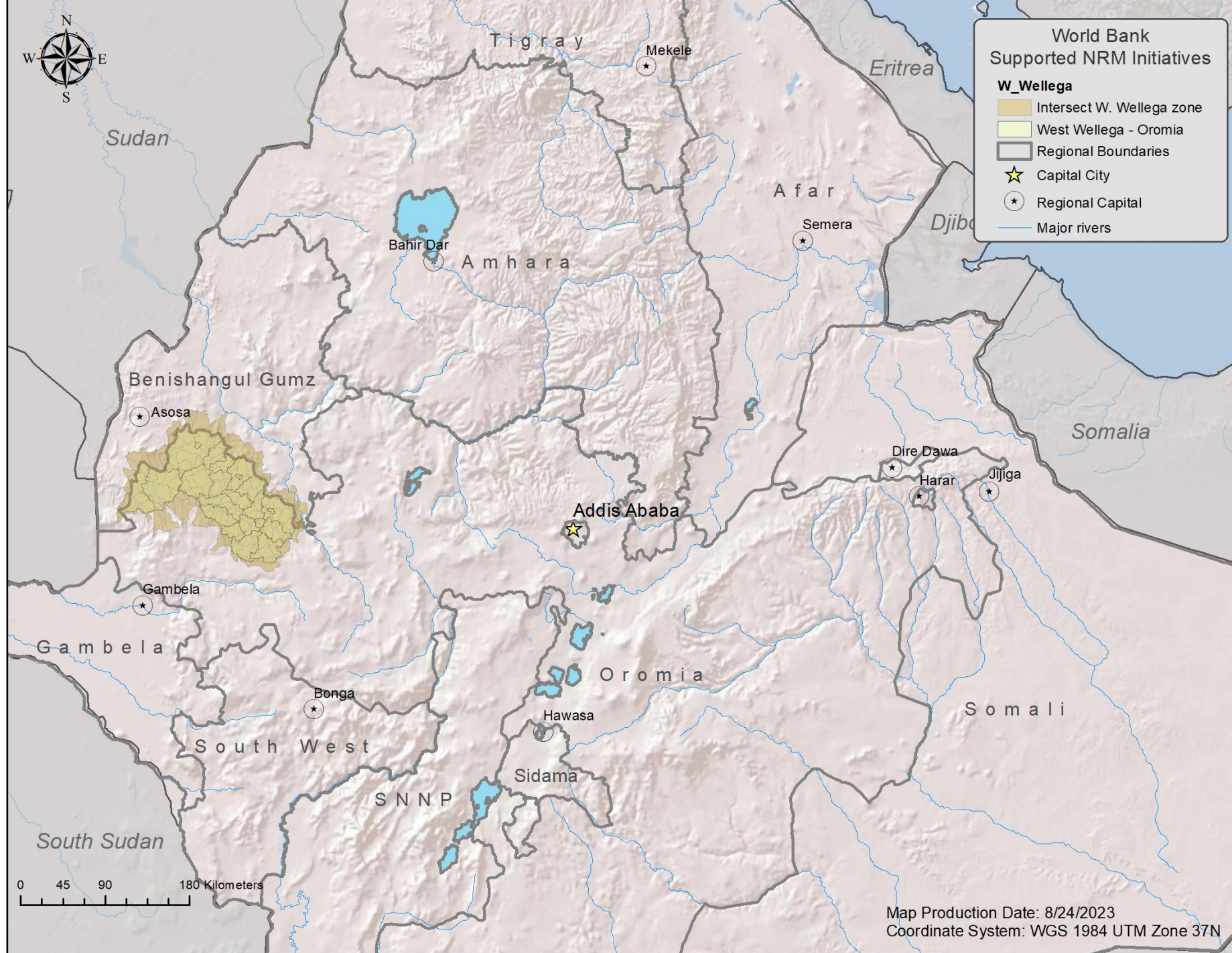
- Goal: IPT to inform the selection process (i.e. the next cohort of ~ 1200 micro-watersheds)
- Pre-screening
  - Areas to exclude
  - Areas for further focus, concentration

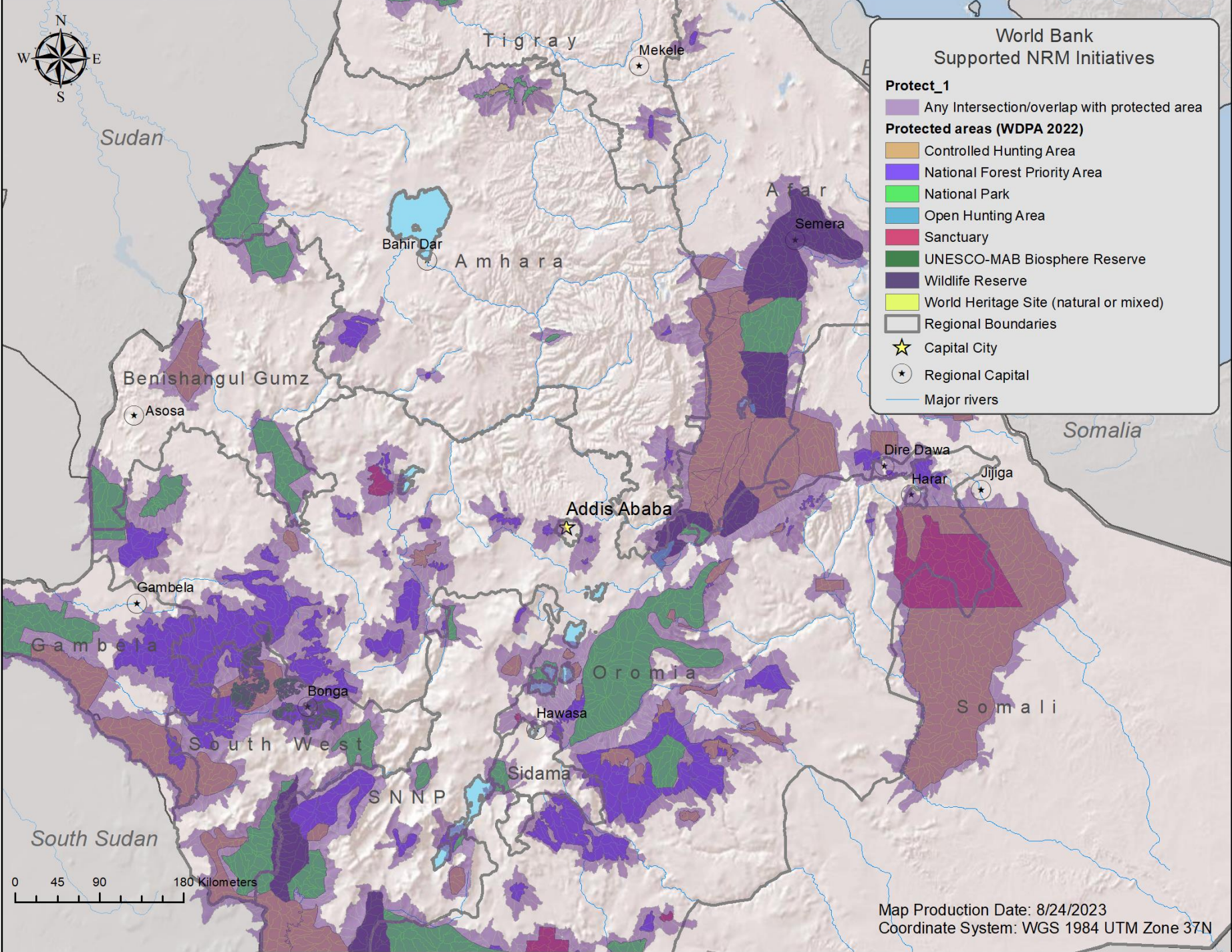
# CALM

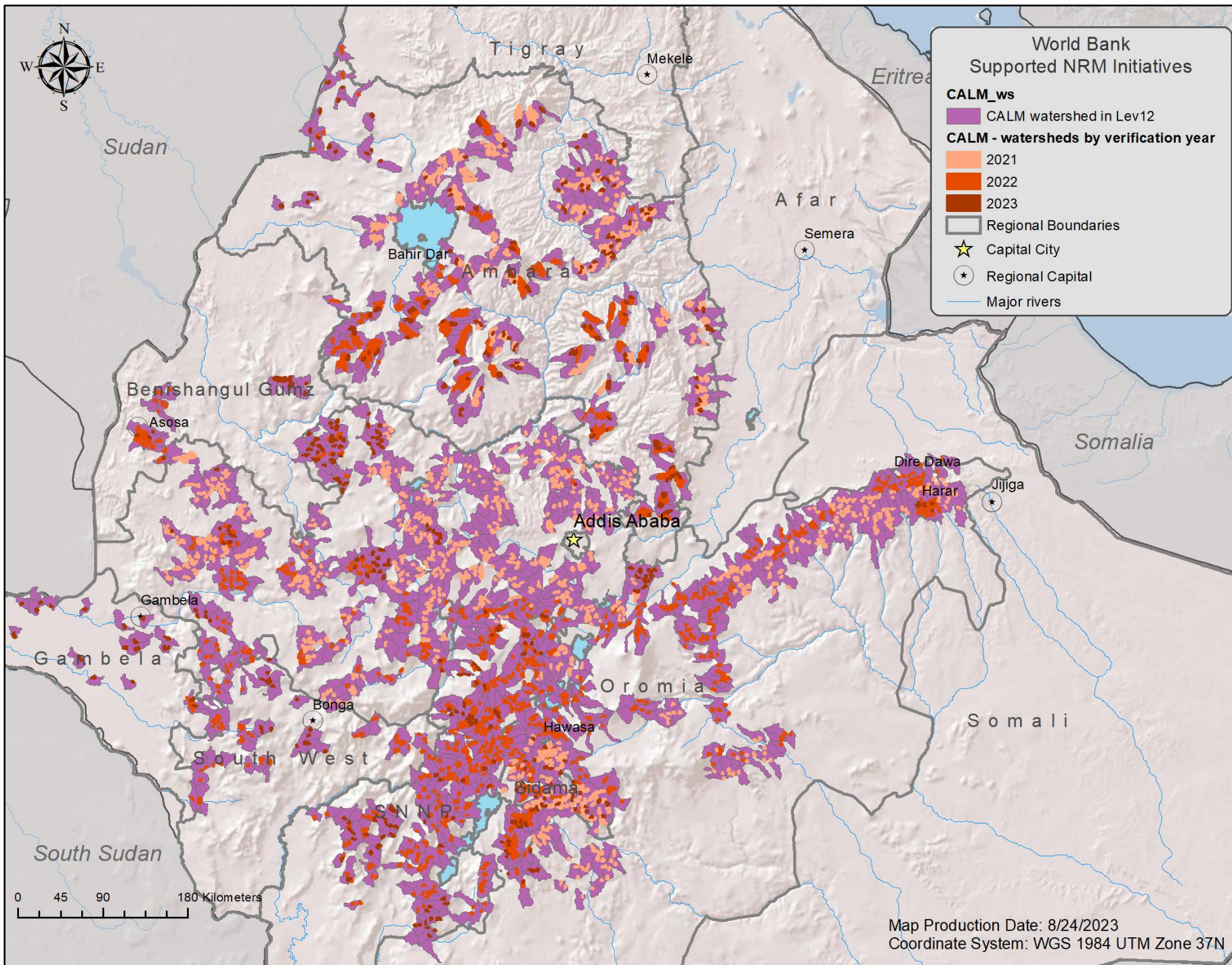
- Recall August Virtual mission...
- High-level screening criteria (WWF Hydroshed level 12)
  - Include for consideration if:
    - Existing CALM watershed
    - CALM land administration
  - Exclude from consideration if:
    - Conflict
    - Intersects with a protected area

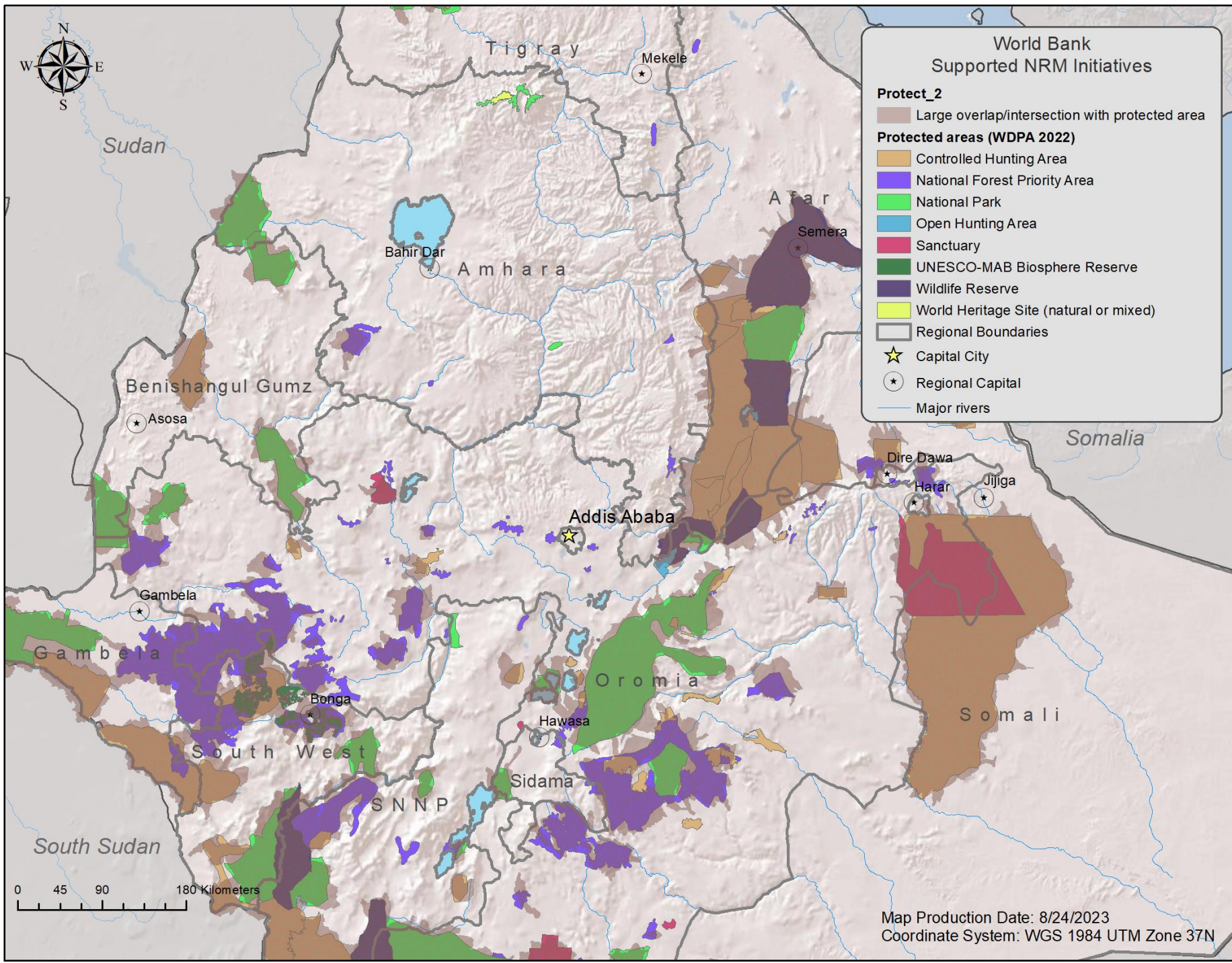


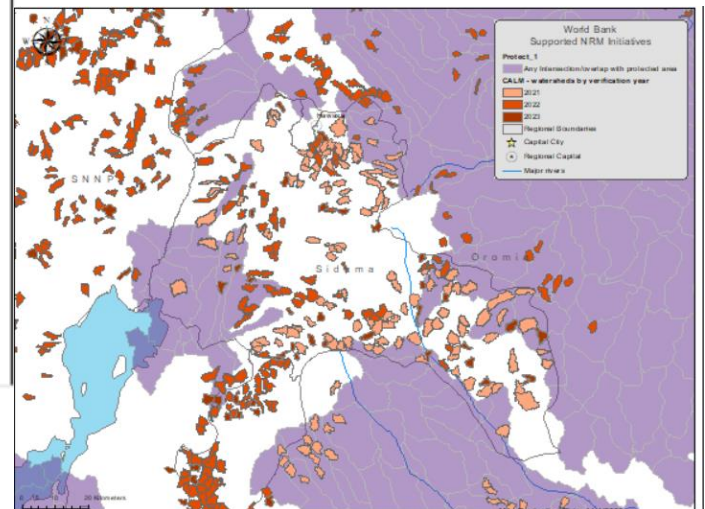
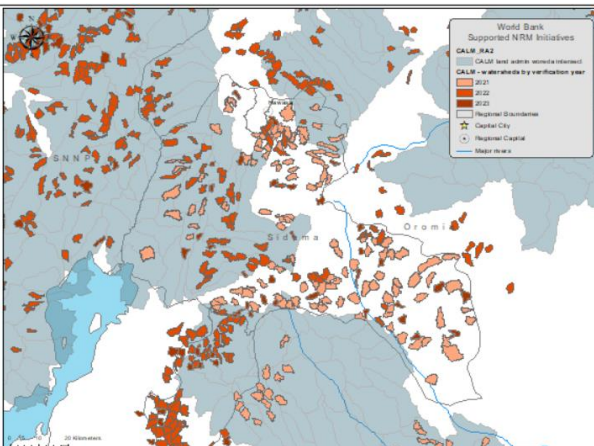
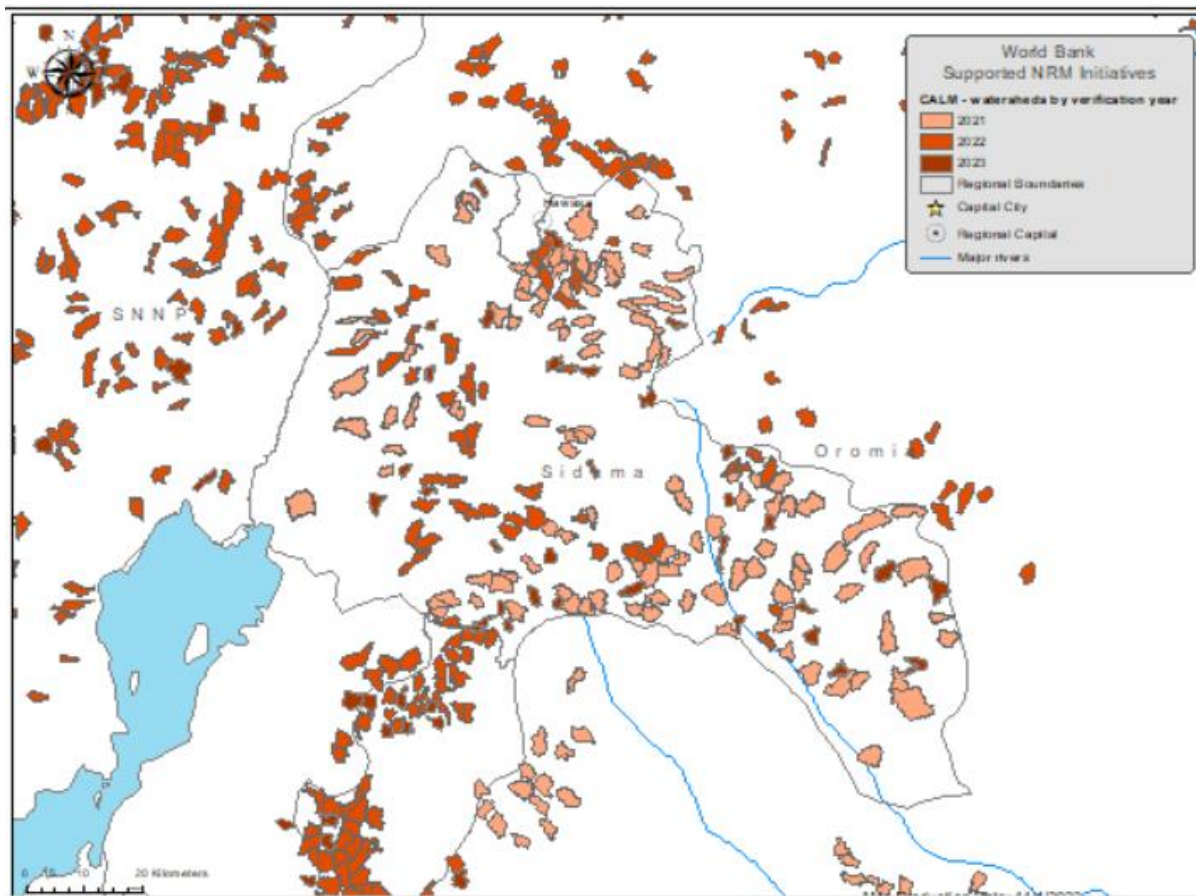
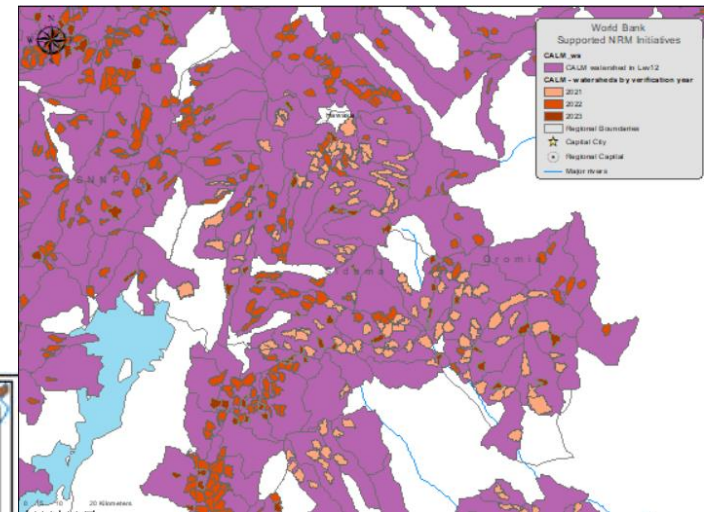
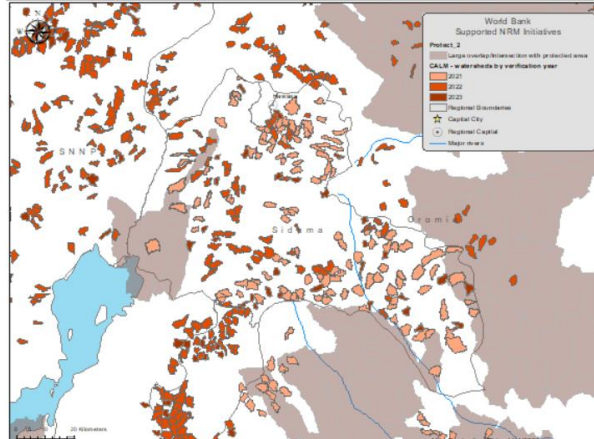


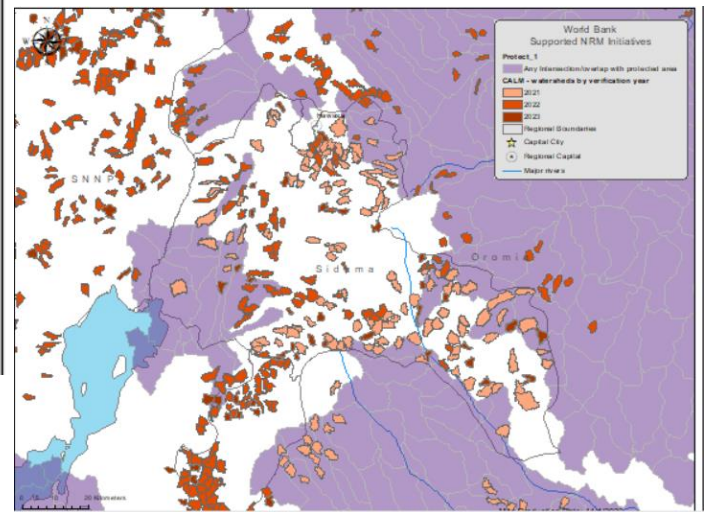
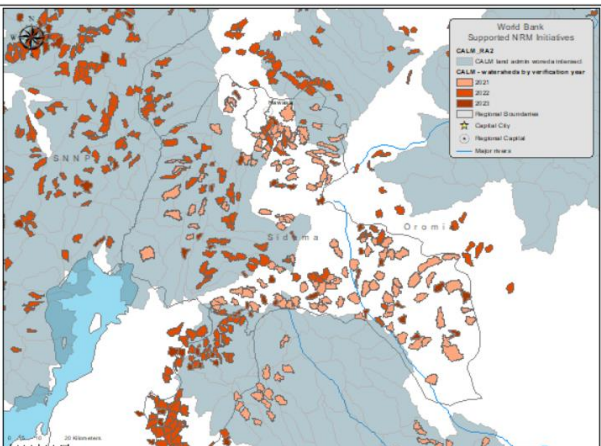
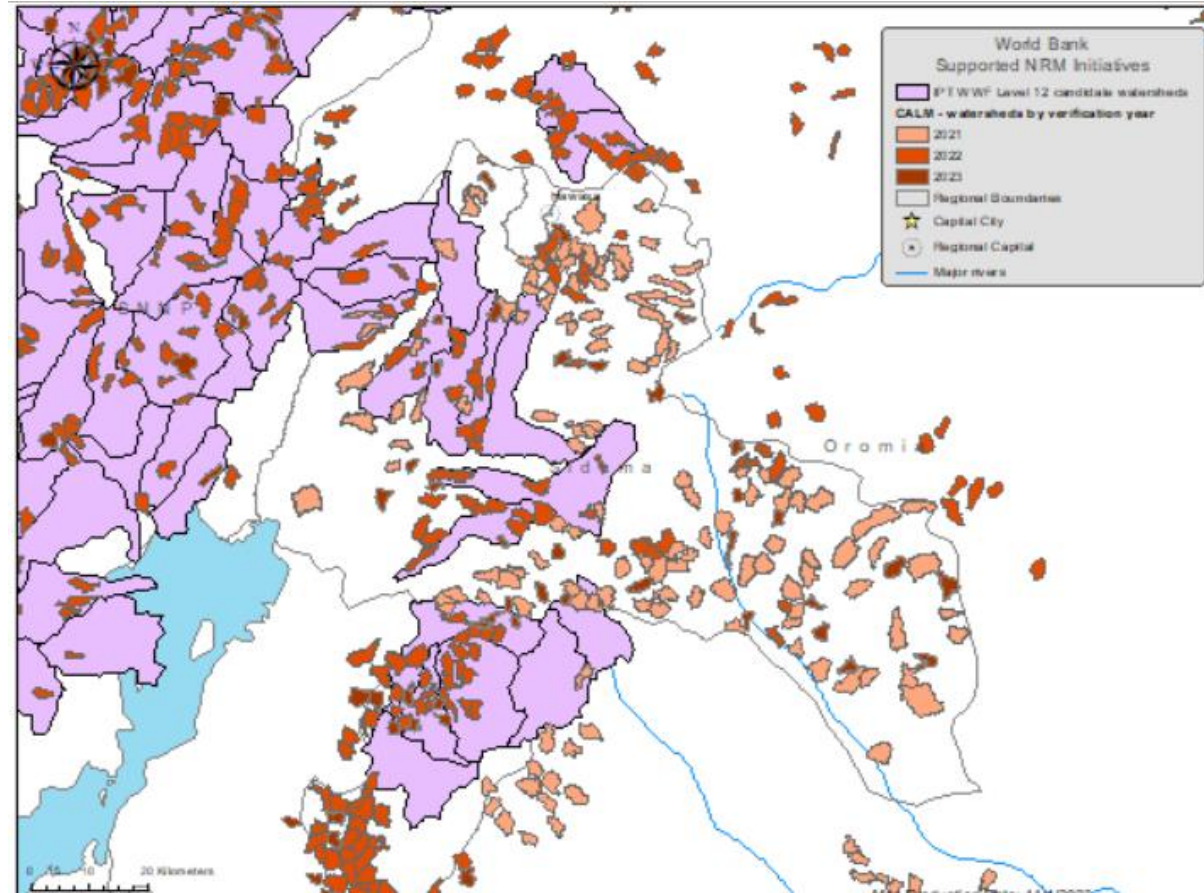
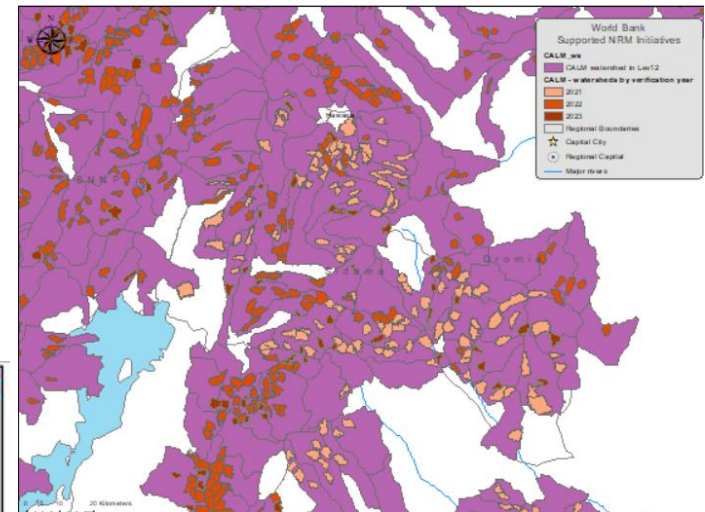
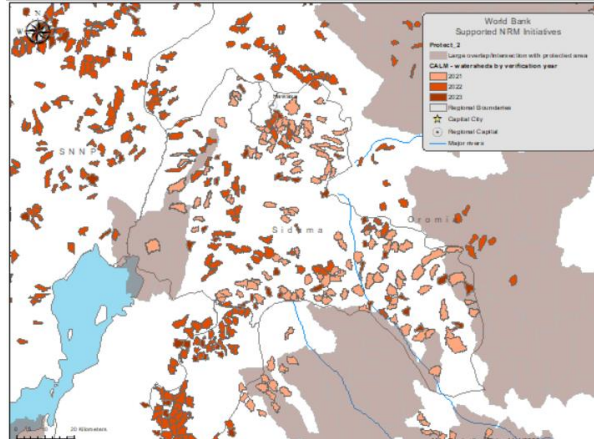












# CALM

- High-level screening criteria (WWF Hydroshed level 12)
  - Include for consideration if:
    - Existing CALM watershed
    - CALM land administration
  - Exclude from consideration if:
    - Conflict
    - Intersects with a protected area
- Regional considerations:
  - Further Exclusion?
  - Priorities?

# Practical considerations

- IPT prioritization based on data and modeling that incorporates priorities/preferences
- Other practical considerations
  - Information not captured by IPT
  - Regional allocations
  - Political factors
  - Other inclusion/exclusion
- IPT envisioned to support the targeting of SLM investments – an input to the decision making process.
  - Inform decisions
  - NOT intended to dictate decisions



# CALM Regional Break-out discussion

- Goal: IPT to inform the selection process (i.e. the next cohort of ~ 1200 micro-watersheds)
- Break-out discussion – regional preferences
  - CALM regional representatives:
  - Form group for each region. List preferences:
    - Criteria for inclusion/exclusion
    - Other preferences (i.e. promote lowland, is carbon important locally? In the absence of payment?, etc.)
      - Invasive species?
    - Other data
      - Complete micro-watershed delineation
      - (In possession of) Other data that could be a key input?
    - Functionality dashboard
      - Add/incorporate additional variables

# CALM - Regional input/feedback

- Break-out discussion – regional preferences
- Provide input on the following:
  - Inclusion/exclusion
    - Previously:
      - Include for consideration if:
        - Existing CALM watershed
        - CALM land administration
      - Exclude from consideration if:
        - Conflict area
        - Intersects with a protected area
  - Preferences:
    - What are other important considerations? (i.e. promote lowland, is carbon important locally? In the absence of payment?, etc.)
  - Other Data