

An aerial photograph of Singapore at sunset. The sun is low on the horizon, casting a warm orange glow over the city. The Marina Bay Sands hotel is prominent on the left, with its three towers and skybridge. The Esplanade - Theatres on the Bay is visible in the foreground. The city skyline is filled with illuminated skyscrapers, and the water of the bay reflects the lights and the sky. The overall scene is a vibrant and modern urban landscape.

AI Singapore

Accelerating Singapore to become a Data-Savvy and AI Aware Nation

Laurence Liew

Director

AI Industry Innovation & Makerspace

AI Singapore (AISG)



Launched in Jun 2017

National R&D programme in AI – first of its kind national level setup

- build **deep national capabilities** in AI
- create **social and economic impacts**
- grow **local talent**
- accelerate **AI ecosystem**
- put **Singapore on the world map**

AISG Pillars

Support Singapore's vision to be a leader in developing scalable, impactful AI solutions strategic to the nation



AI RESEARCH

Sustain investments in fundamental AI research to **ensure SG's relevance in the global AI race**

- ✓ Build strategic capabilities
- ✓ Retain and nurture local talent
- ✓ Preposition SG for future applications



AI TECHNOLOGY

Support **applied AI research projects** which are **aligned to the NAIS**

- ✓ AI solutions with high social and economic impacts
- ✓ Sector-wide or national scale challenges



AI INNOVATION & MAKERSPACE

Catalyse and support more widespread **industry adoption of AI**

- ✓ AI adoption in industry through talent and projects
- ✓ AI standards
- ✓ Industry consortia



AI GOVERNANCE

Research in **governance, ethics and accountability of AI** systems at the national level

- ✓ Fairness, accountability and transparency of AI systems
- ✓ Privacy and ethics
- ✓ Risk and mitigations

100E/Makerspace Project Sponsors

Under AISG's flagship #100E programme, IBM collaborated with us to help them better classify the quality of different hardware products into different risk categories based on product return rates as well as predict future product return rates.

The AI project involved using image processing, deep learning and time-series analytics. Engineers only need a few minutes to analyse the data, providing them with a glimpse into the future to pre-empt potential customer issues. The cost savings from this solution was also tripled!

Check out this full interview with Mr Julian Tan, Senior Manager, Analytics Solution, IBM: https://lnkd.in/gJ2_JxV

Here's the link to an article on this project too: https://lnkd.in/gzdX_CJ

#aisingapore #aisg

IBM's greatest invention is the IBMer.

Julian Tan
Senior Manager, Analytics Solutions

0:02 / 0:48

https://www.linkedin.com/posts/aisingapore_100e-aisingapore-aisg-activity-6787664251604611072-tUFH

Under AISG's flagship 100E programme, Sompo Holdings (Asia) collaborated with us in an AI project to develop a fraud detection application that could automatically flag out suspicious cases for further investigation and identify valid claims as candidates for straight-through payment. The results? 90% improvement in fraud detection and at least 20% of customers also had their claims processed and payment disbursed much more quickly, resulting in a better customer experience.

Check out the full interview with Dr. Patrick Chin, Head of Global Digital, Branding & AI Practice, Sompo Holdings (Asia): <http://ow.ly/ACMIS0DTJsg>

Here's the link to an article on this project too: <http://ow.ly/lcKV50DTJsf>

#aisg #aisingapore #100E

SOMPO

Sompo Holdings (Asia)

Dr. Patrick Chin

0:03 / 0:30

https://www.linkedin.com/post/s/aisingapore_aisg-aisingapore-100e-activity-6774909809843171328-QISM

Under AISG's flagship #100E programme, GIC collaborated with us to build a document labeling algorithm that could parse a document and identify the specific tax topics it related to, as well as the geographical region that it covered. With the AI solution doing the first round of classification, GIC's tax specialists are able to spend more time on value-added tasks such as analysing the impact of the changes and providing expert insights. The system passed GIC user acceptance tests with 82% accuracy and its subsequent adoption by the organisation led to improved performance in analyst-level classification, resulting in more streamlined workflows and greater efficiency in tax analysis.

Check out this interview with 2 senior executives from GIC and learn how AI has helped them classify tax update notifications, improve performance in analyst-level classification, resulting in more streamlined workflows and greater efficiency in tax analysis: <https://lnkd.in/gyM2x5n>

Here's the link to an article on this project too: <https://lnkd.in/dw9VnMD>

#aisg #aisingapore

Prateek Prakash

0:20 / 0:37

https://www.linkedin.com/p/osts/aisingapore_100e-aisg-aisingapore-activity-6797815790050668544-BITc

As organisations start to make the journey back to work at the end of the Circuit Breaker in Singapore, many manufacturing companies were looking for ways to restart operations and to keep their employees safe.

Here's AISG's FinePose product, a social distancing app, in action at HP Inc. Singapore's manufacturing facilities.

Find out more about our collaboration and how HP has reaped the benefits of deploying this solution in this full interview with Ms Jamie Neo, Director of Engineering, Ink Supplies Operations, HP Inc.

<https://lnkd.in/ekMYEVI>

#aisg #aisingapore #safedistance #makerspace

Jamie Neo
Director of Engineering
Ink Supplies Operations
HP Inc.

0:23 / 0:32

https://www.linkedin.com/pos ts/aisingapore_aisg-aisingapore-safedistance-activity-6734651889838780416-p1Oq

uParcel boosts delivery efficiency by 20% with AI

uParcel is the largest home-grown same-day delivery company with an on-demand platform that supports a decentralised distributed model. This means that the company delivers packages point to point without consolidating them at warehouses, instead,

0:23 / 0:32

<https://aisingapore.org/2021/05/uparcel-boosts-delivery-efficiency-by-20-with-ai/>

Catalysing AI Industry Adoption

500 Engaged, **230** Active, **70** Approved
\$58mil total value add from **30** Completed

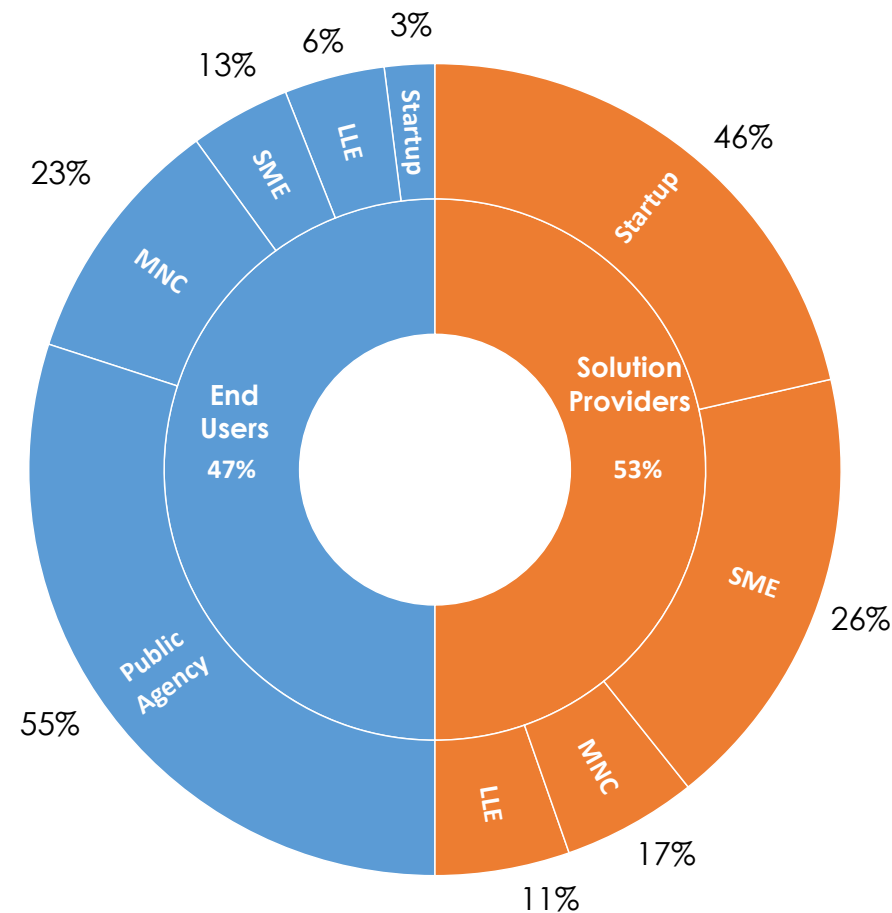
100 Experiments

31 End Users

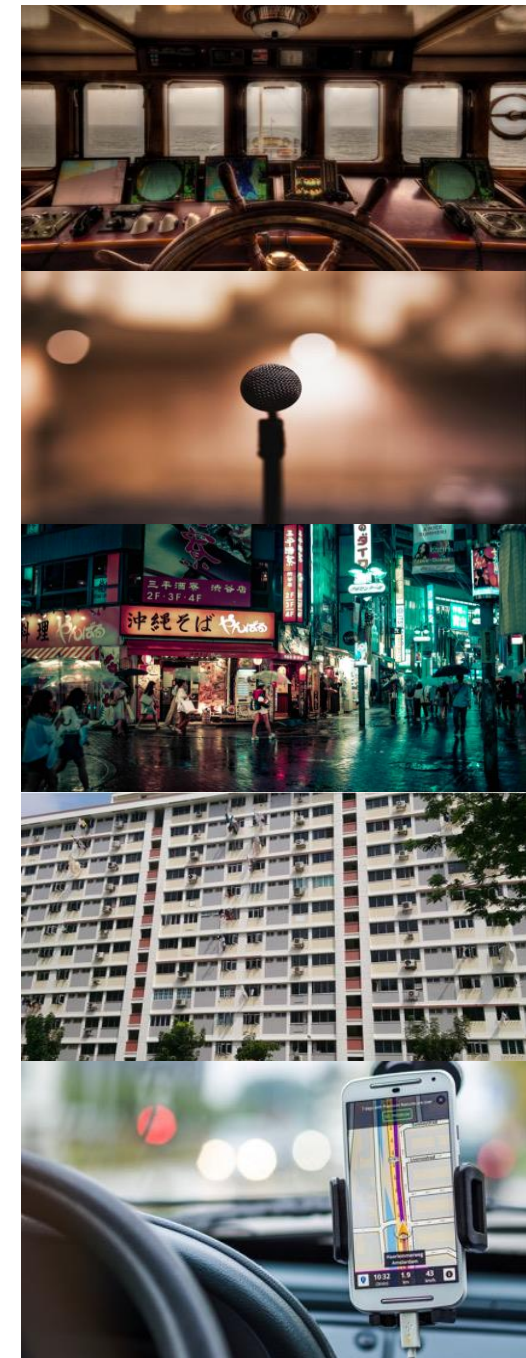
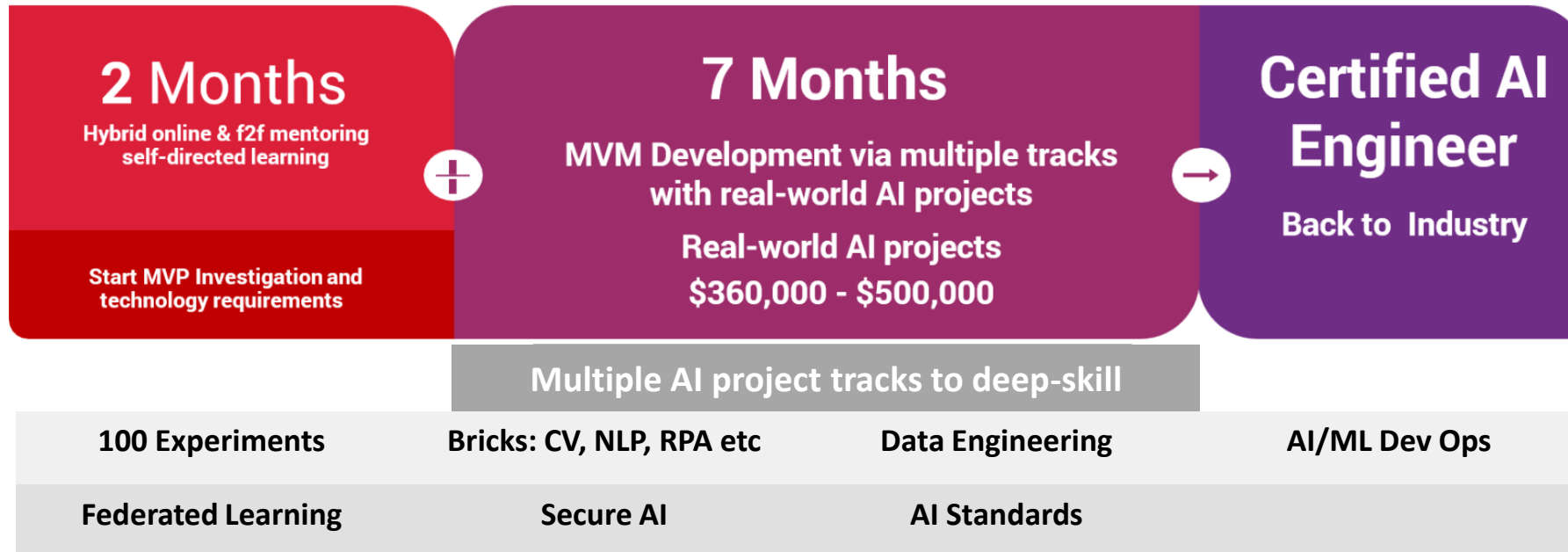
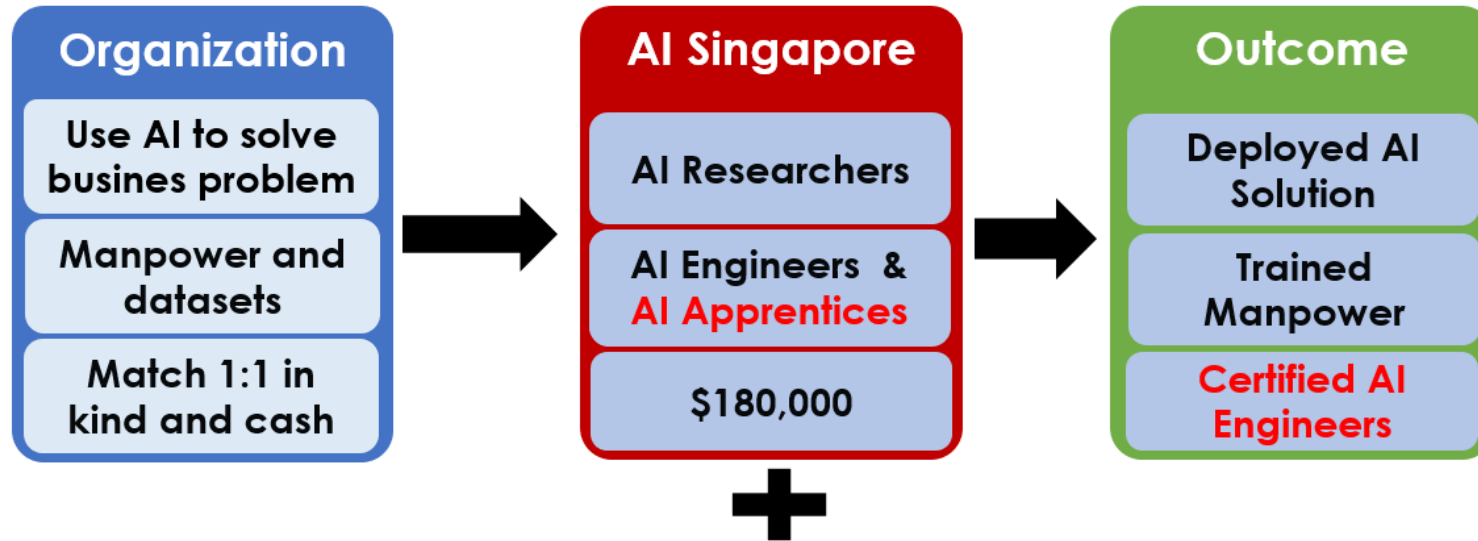
- ✓ Start-ups (1)
 - ✓ Financial Services
- ✓ LLEs (2)
 - ✓ Financial Services (1)
 - ✓ Food Manufacturing (1)
- ✓ SMEs (4)
 - ✓ Healthcare (3)
 - ✓ Land Transport (1)
- ✓ MNCs (7)
 - ✓ Energy and Chemicals (1)
 - ✓ Financial Services (3)
 - ✓ ICT and Media (2)
 - ✓ Precision Engineering (1)
- ✓ Public Agencies (17)
 - ✓ Education (2)
 - ✓ Healthcare (5)
 - ✓ Public Agencies (10)

35 Solutions Providers

- ✓ Start-ups (16)
 - ✓ Electronics (1)
 - ✓ Healthcare (3)
 - ✓ ICT and Media (11)
 - ✓ Logistics (1)
- ✓ LLE (4)
 - ✓ Construction (1)
 - ✓ Electronics (1)
 - ✓ Marine and Offshore (1)
 - ✓ Real Estate (1)
- ✓ MNCs (6)
 - ✓ ICT and Media (1)
 - ✓ Marine and Offshore (1)
 - ✓ Precision Engineering (4)
- ✓ SMEs (9)
 - ✓ Environmental Services (1)
 - ✓ Financial Services (1)
 - ✓ ICT and Media (7)

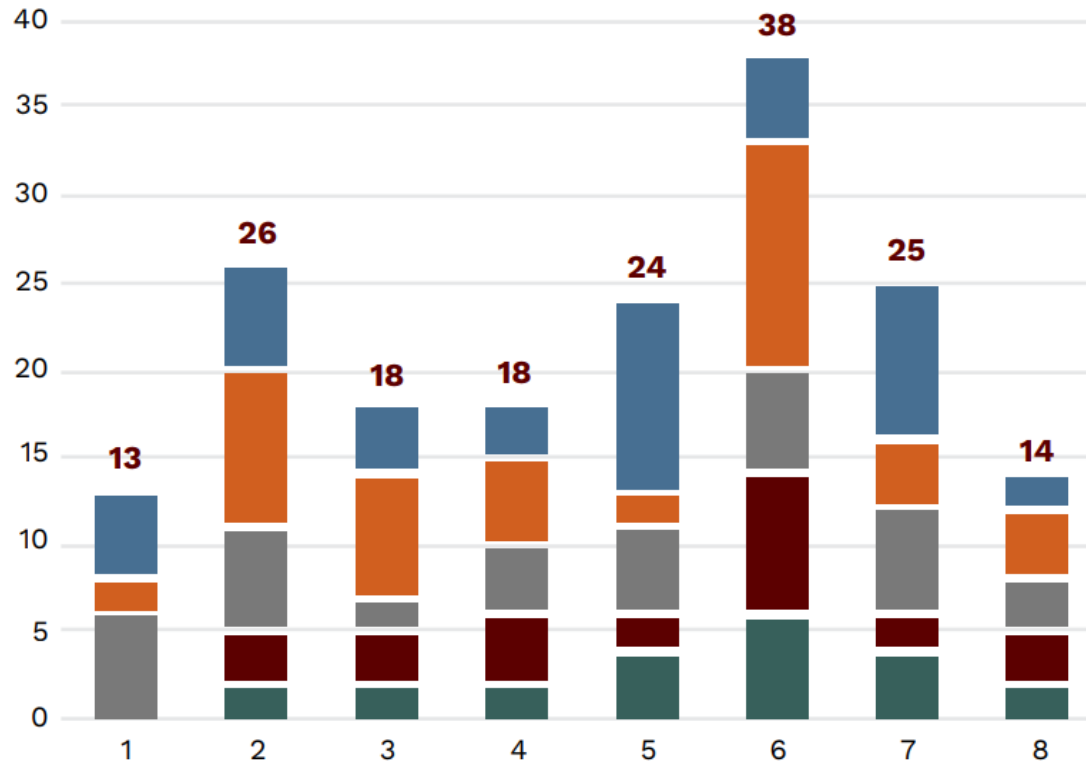


Real-world AI projects + AIAP



Profile of AIAPs

Profile of the first eight batches of AIAP apprentices



Information is accurate as at 30 May 2021

13% Accountancy / Banking / Finance / Business / Data Analytics

14% Arts / Social Sciences / Business / Others

22% Computer Science / Computer Engineering / ICT

26% Engineering (ME, EE, EEE etc)

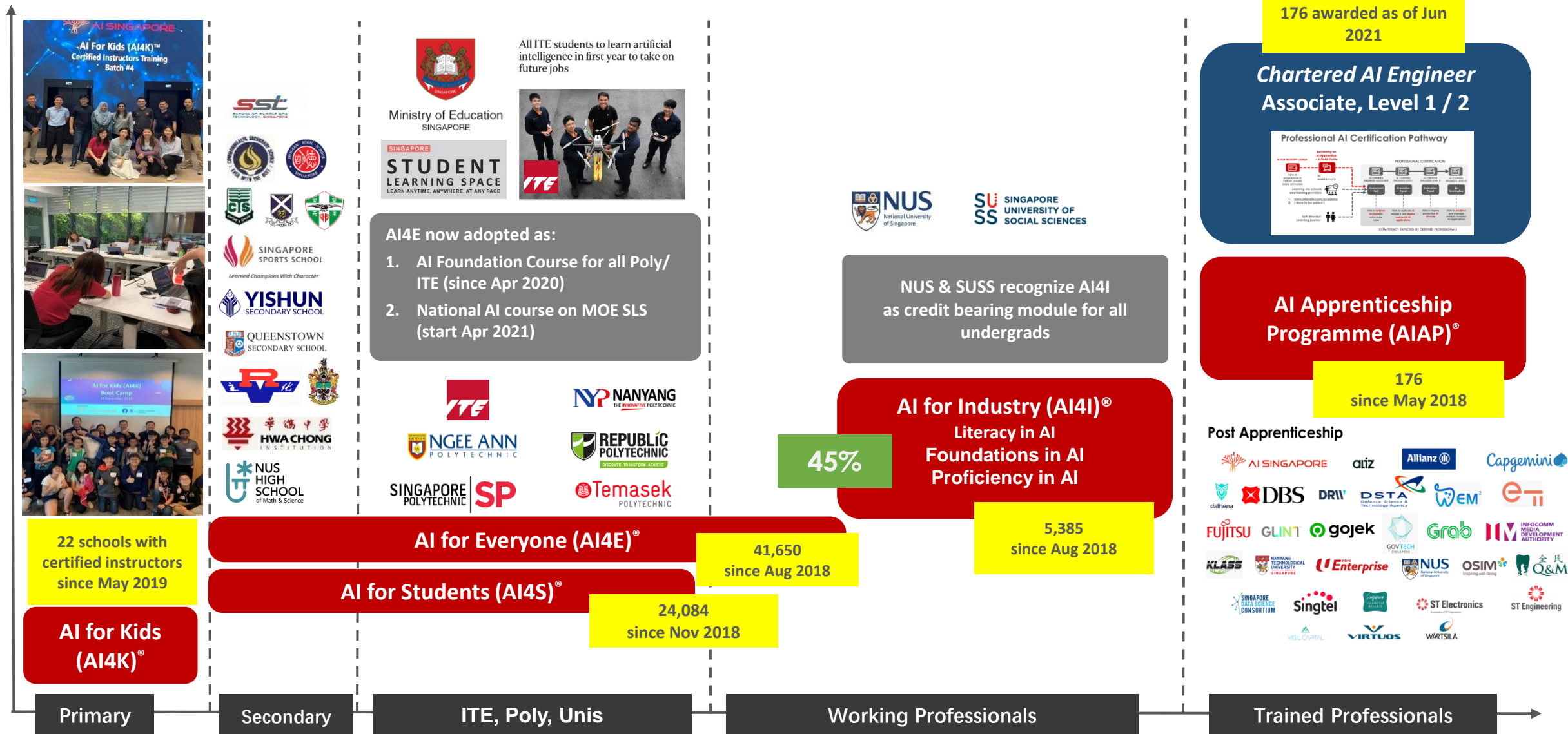
26% Science (Chemistry, Physics, Maths etc)

176 Total number of apprentices trained in batches #1- #8

Post AIAP employment: AI engineers or data scientists in organisations including the Singapore Tourism Board, Grab, Singtel, Wartsila and AI Singapore.



Generational AI Capability Development

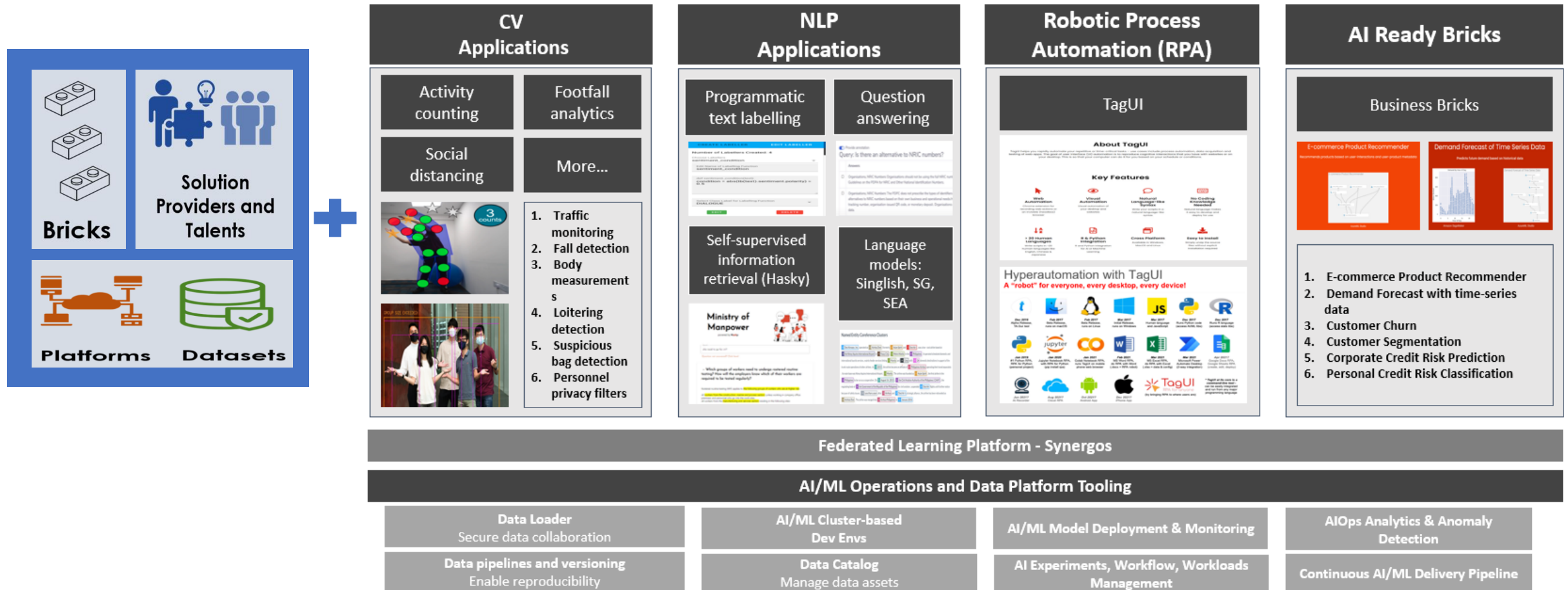




Egypt Adopts AI Singapore's AIAP and AI4E to Upskill Nation

AI Makerspace

A holistic end to end view and programmatic approach for AI Digital Transformation for Enterprises based on AI Singapore's **AI Readiness Index framework (AIRI)**.


Federated Learning Platform - Synergos
AI/ML Operations and Data Platform Tooling

Data Loader

Secure data collaboration

AI/ML Cluster-based Dev Envs

AI/ML Model Deployment & Monitoring

AIOps Analytics & Anomaly Detection

Data pipelines and versioning

Enable reproducibility

Data Catalog

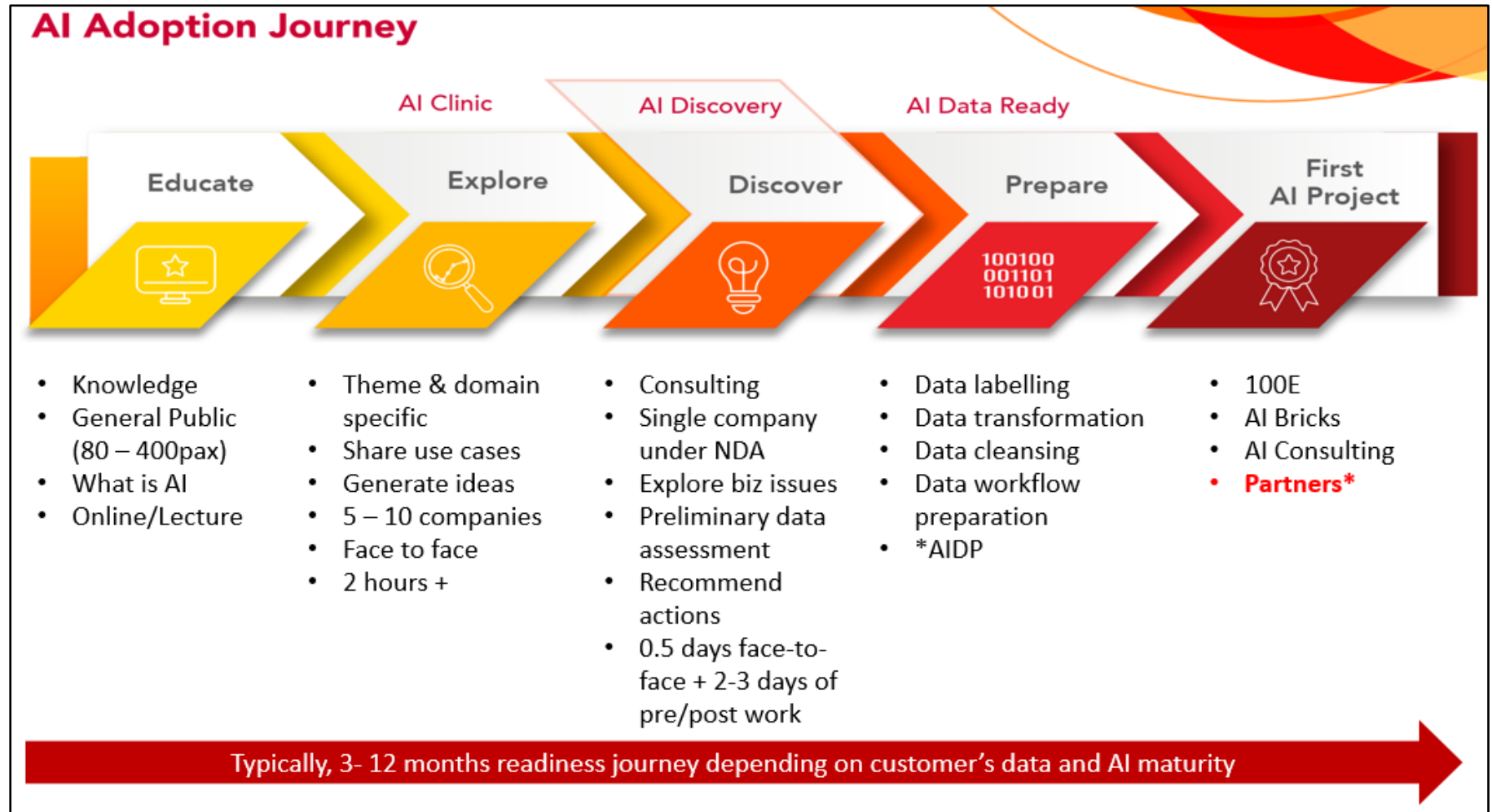
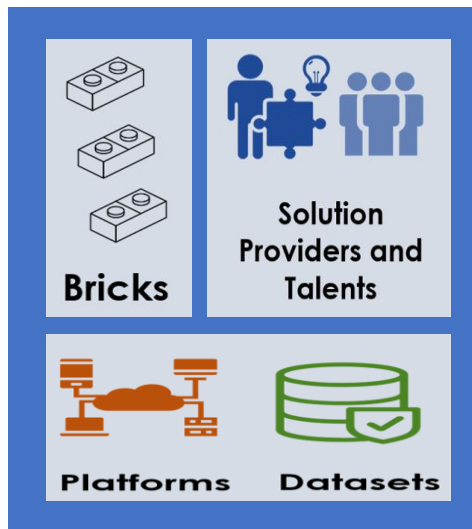
Manage data assets

AI Experiments, Workflow, Workloads Management

Continuous AI/ML Delivery Pipeline

AI Makerspace

A holistic end to end view and programmatic approach for AI Digital Transformation for Enterprises based on AI Singapore's AI Readiness Index framework (AIRI).



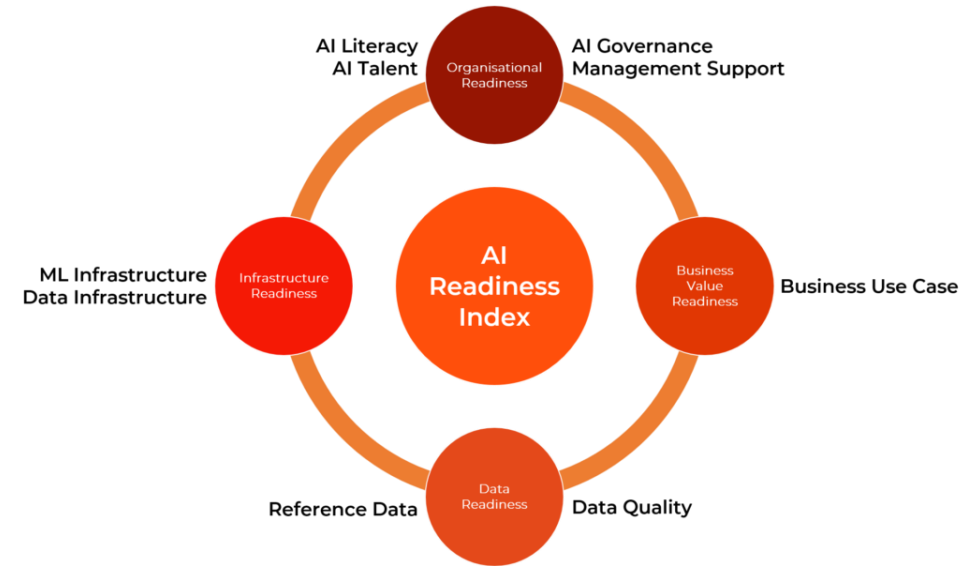
AI Readiness Index (AIRI)

<https://www.aisingapore.org/airi>

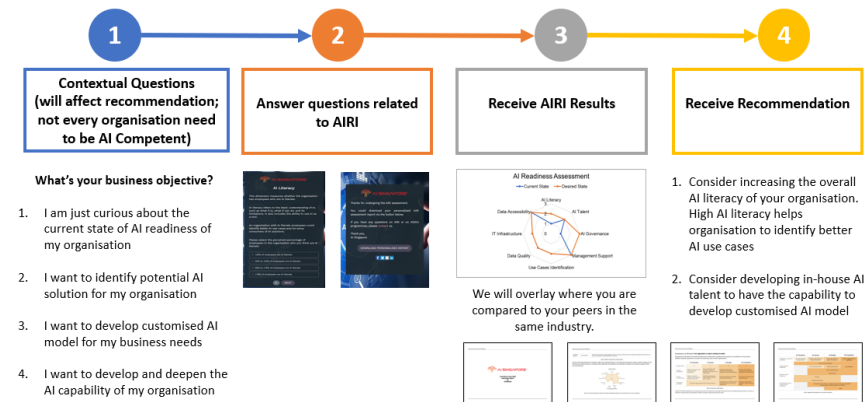
- Accelerate 100E and AI projects
 - To help our team to quickly identify potential 100E companies, we created a checklist based on our experience engaging companies
 - We continue to enhance that checklist and we call it the **AI Readiness Index (AIRI)**

- AIRI classify enterprises into
 - **AI Unaware**
 - **AI Aware**
 - **AI Ready**
 - **AI Competent**

4-Pillars And 9-Dimensions



15-mins Self-assessment!



Interpretation of AIRI Assessment

	AI Unaware	AI Aware	AI Ready	AI Competent
Interpretation	<ul style="list-style-type: none"> Organisation might hear about AI, but is unaware of AI applications 	<ul style="list-style-type: none"> Organisation is aware of AI applications and could identify potential use cases 	<ul style="list-style-type: none"> Organisation has the capabilities to integrate pre-trained AI models into products or business processes 	<ul style="list-style-type: none"> Organisation has the capabilities to develop customised AI models and solutions for specific business needs
Key Characteristics	<ul style="list-style-type: none"> Wait for vendors to convince with use cases and business value of AI Consume ready-made AI solutions 	<ul style="list-style-type: none"> Seek AI solutions to address business needs Identified potential use cases for AI applications Consume ready-made AI solutions 	<ul style="list-style-type: none"> Explored viability of commercially available pre-trained AI models for business needs 	<ul style="list-style-type: none"> Developed product development roadmap for AI implementation
Focus	<ul style="list-style-type: none"> Increasing AI literacy of organisation 	<ul style="list-style-type: none"> Getting organization to adopt AI solution from ISV and COTS 	<ul style="list-style-type: none"> Helping organization to accelerate their AI adoption 	<ul style="list-style-type: none"> Deepening organisational AI capabilities
AI Singapore's Programmes	AI For Everyone			
	AI Clinics			
		AI Discovery		
		AI For Industry + AI Certification		
		AI For Leaders		
		AI Bricks		
		AI Advisory Projects (<3 months)		
		100Experiments (with AI and Data Apprenticeship Programme)		
			AIAP-X	

Thank You!