

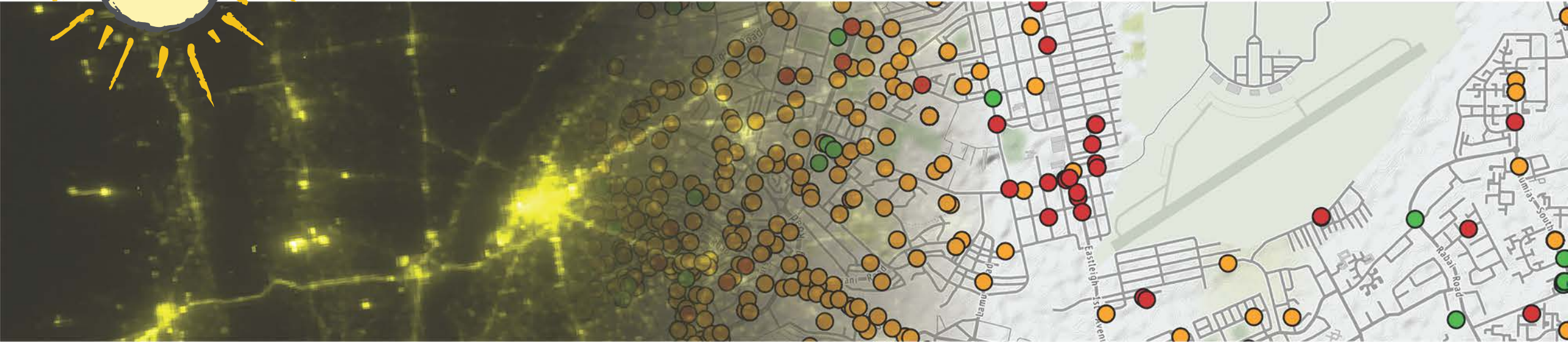


# IE CONNECT FOR IMPACT

Transforming the Growth Potential  
of Transport Investments

# Transport and Climate Change

Aidan Coville, DIME

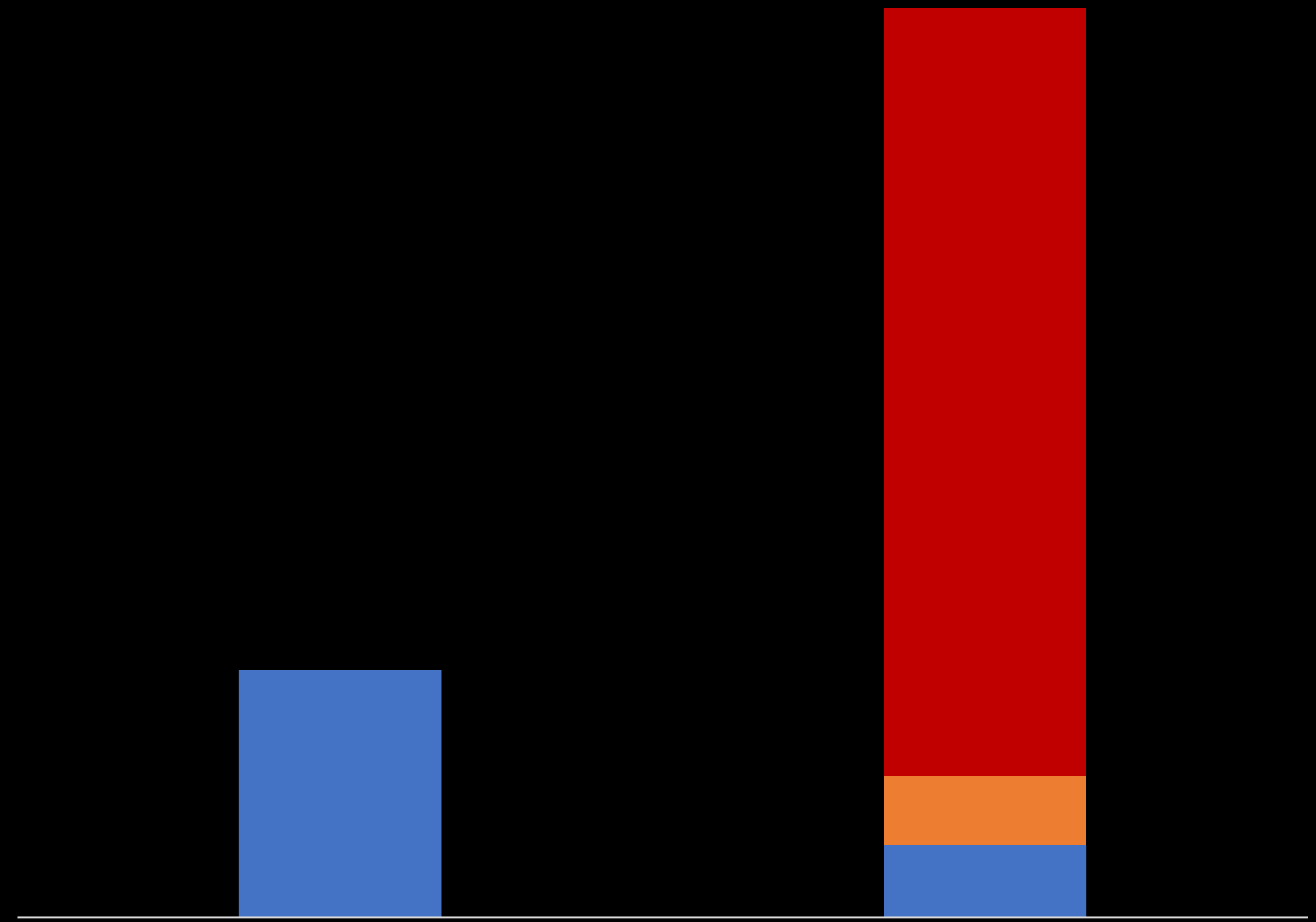


Kg CO2/year

6000  
4000  
2000  
0

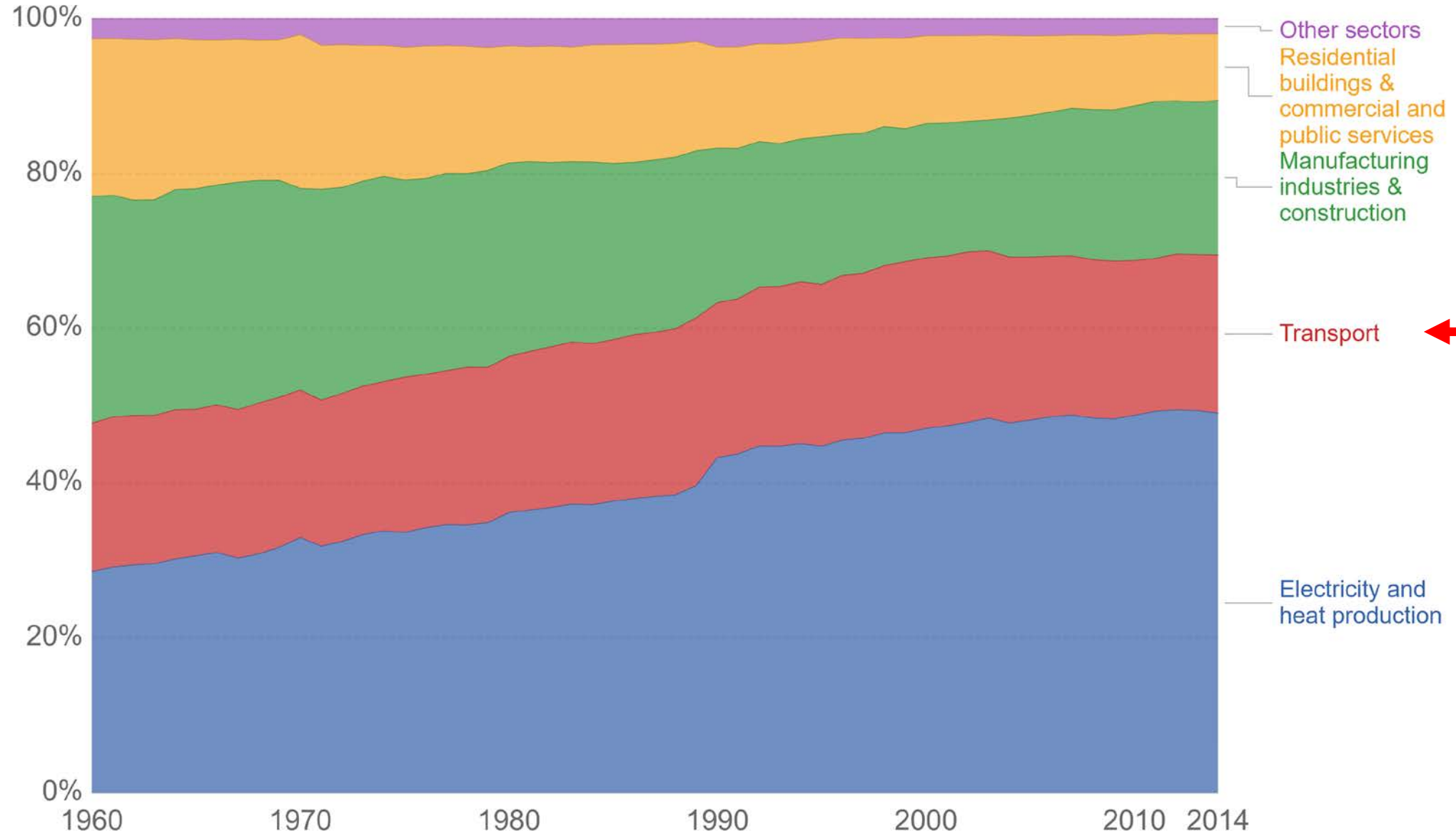
US

Me



# Carbon dioxide (CO<sub>2</sub>) emissions by sector or source, World

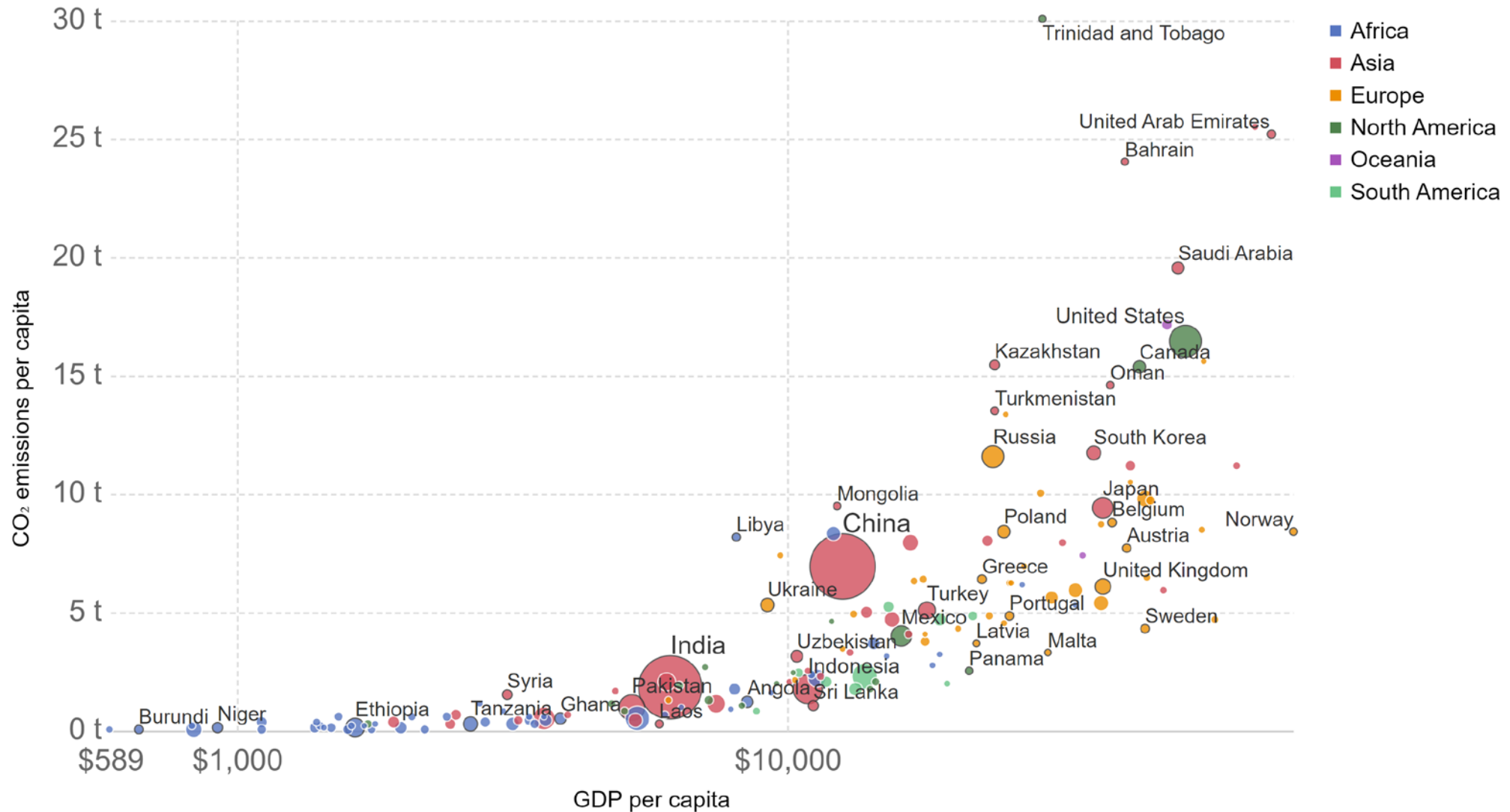
Share of carbon dioxide (CO<sub>2</sub>) emissions from fuel combustion by sector or source.



Source: International Energy Agency (IEA) via The World Bank  
OurWorldInData.org/co2-and-other-greenhouse-gas-emissions • CC BY

# CO<sub>2</sub> emissions per capita vs GDP per capita, 2016

Carbon dioxide (CO<sub>2</sub>) emissions per capita are measured in tonnes per person per year. Gross domestic product (GDP) per capita is measured in international-\$ in 2011 prices to adjust for price differences between countries and adjust for inflation.



Climate co-benefits

NDCs, Congestion, Pollution



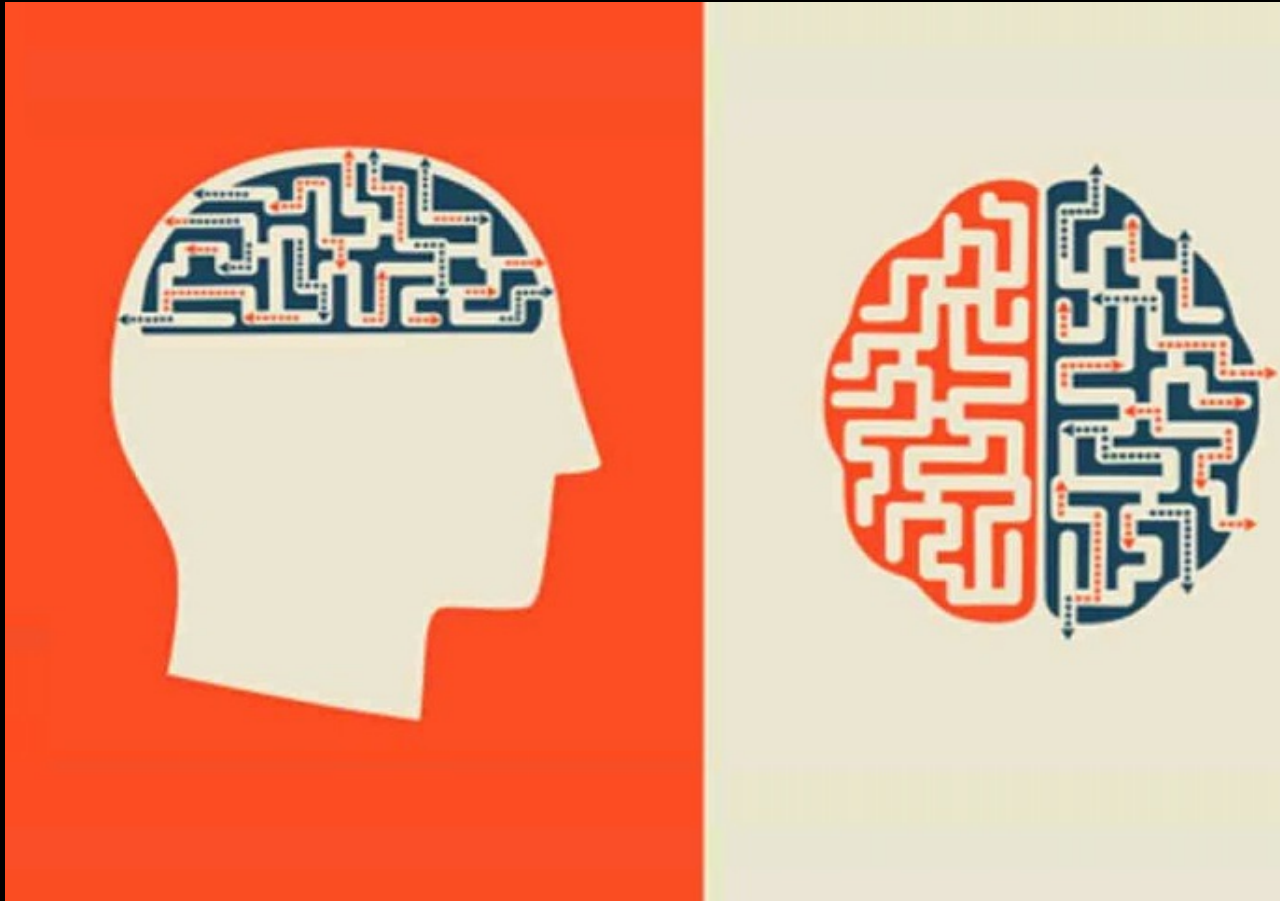
Pushing the research  
frontier

Climate financing

**technology**



**behavior change**





Articulate the  
"sustainability" ToC



Reflect on cross-sectoral  
linkages



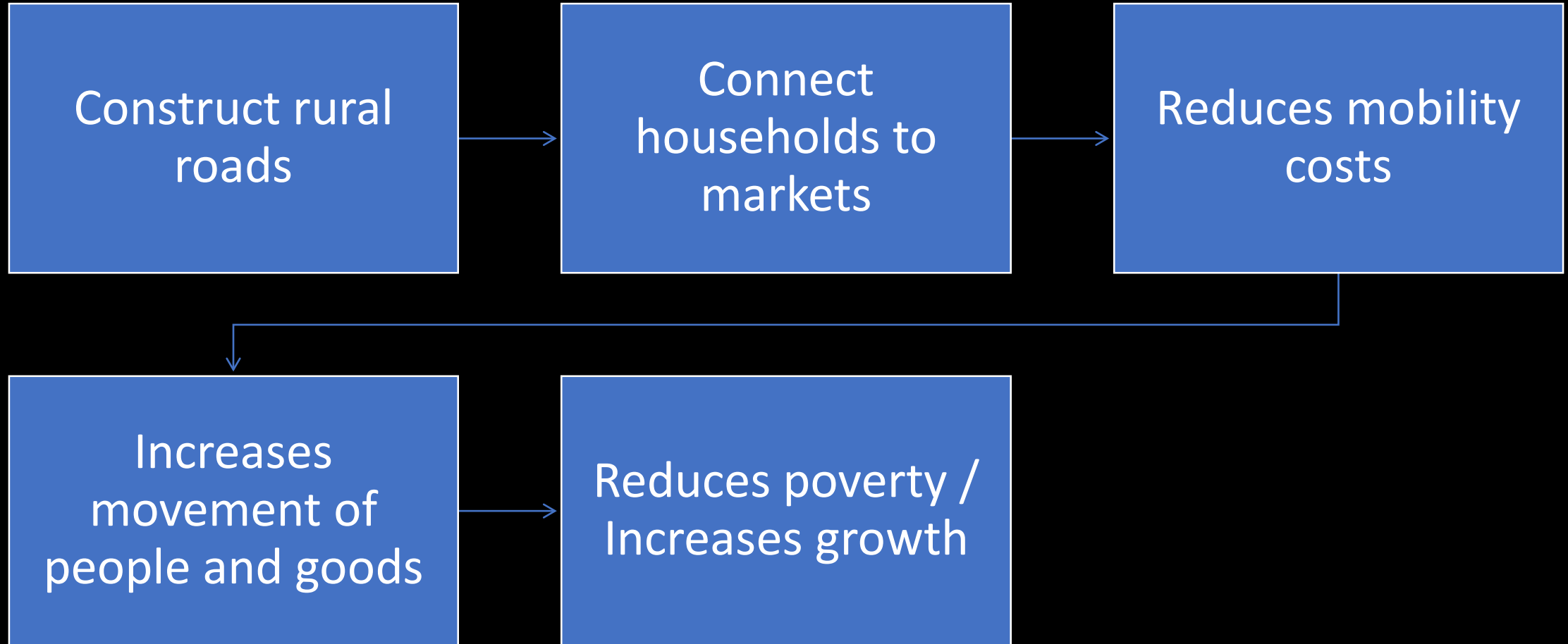
Understand how and what  
to measure



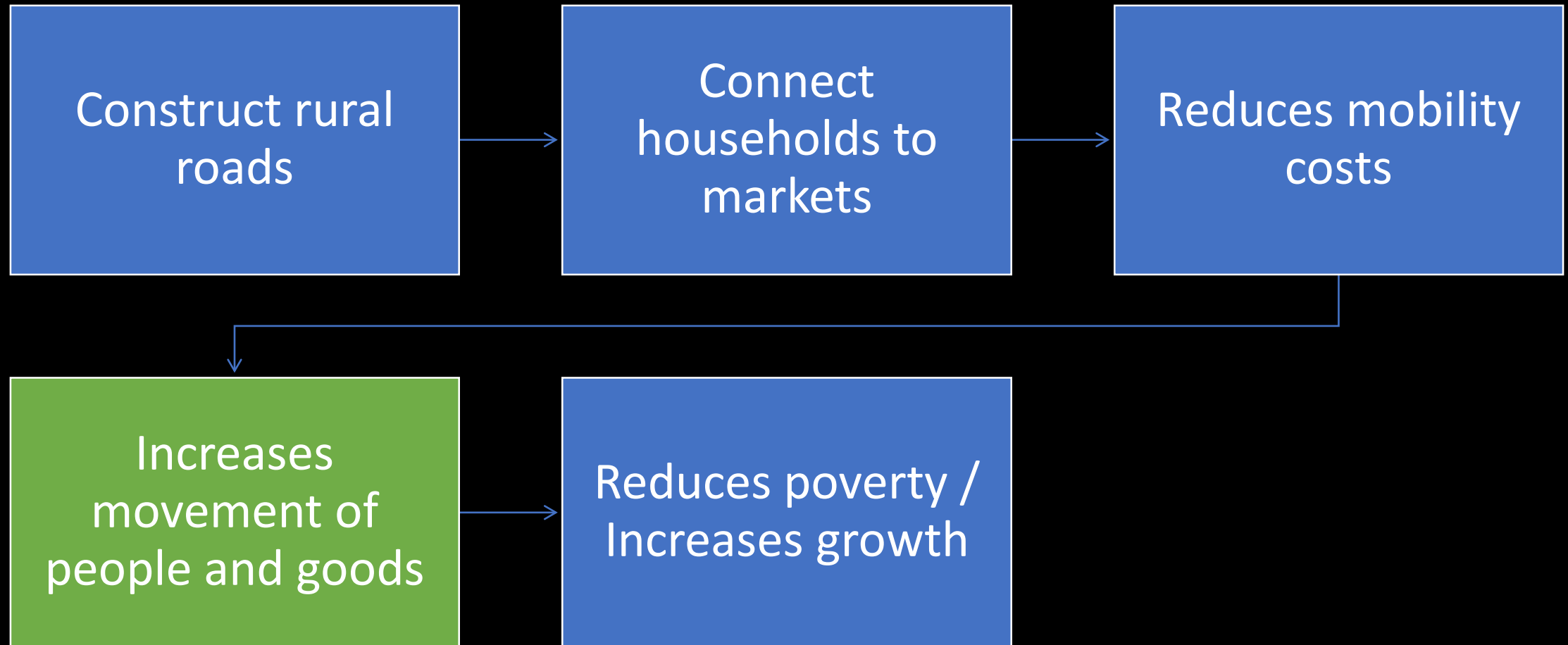
Think bigger...!



# Theory of Change: Rural Roads

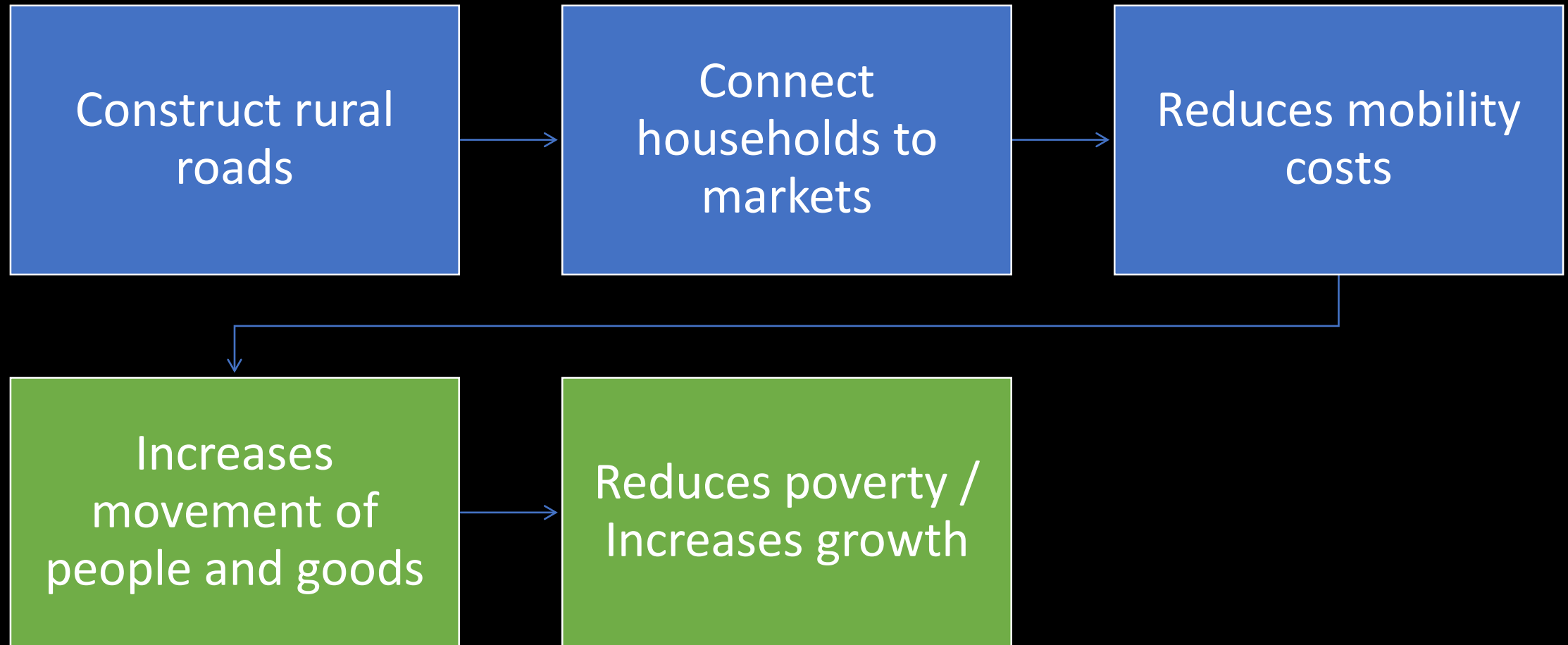


# “Sustainability” Theory of Change: Rural Roads



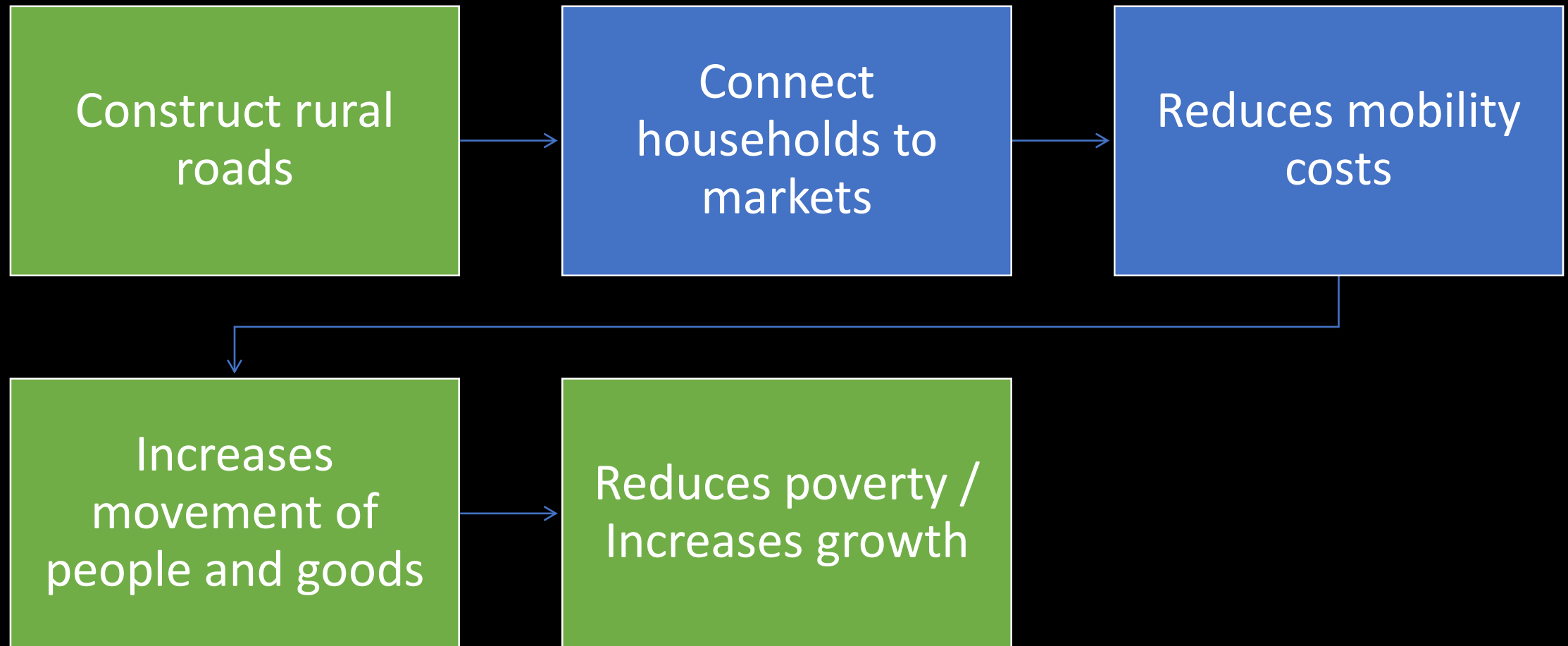
Can we increase the efficiency of movement?

# “Sustainability” Theory of Change: Rural Roads



As incomes increase, how can incentivize investments in sustainable growth?

# “Sustainability” Theory of Change: Rural Roads



As incomes increase, how can incentivize investments in sustainable growth?

# And if you need more inspiration...

