

Circularity in the e-waste supply chain

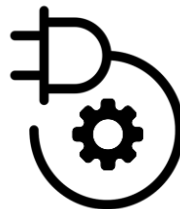
Lúcia Helena Xavier, PhD
CETEM/MCTI

December 9th, 2020
Rio de Janeiro, Brazil

R3MINARE / CETEM



CIRCULAR ECONOMY



E-WASTE SMART MNGT



URBAN MINING



MATERIALS REVERSE LOGISTICS



INDUSTRY 4.0

AGENDA



- **Traditional Mining and Urban Mining**
- **Critical Materials**
- **Symbiotic Loopings**
- **Gaps and Opportunities**

SUM2020

TRADITIONAL MINING AND URBAN MINING: ASPECTS OF E-WASTE MANAGEMENT IN BRAZIL

Carlos Francisco Gomes¹, Marianna Ottoni² and **Lúcia Helena Xavier¹**

¹CETEM – Center for Mineral Technology, ²Energy Planning Program, Federal University of Rio de Janeiro (UFRJ) - BRAZIL



MINISTÉRIO DA
CIÊNCIA, TECNOLOGIA
E INOVAÇÕES



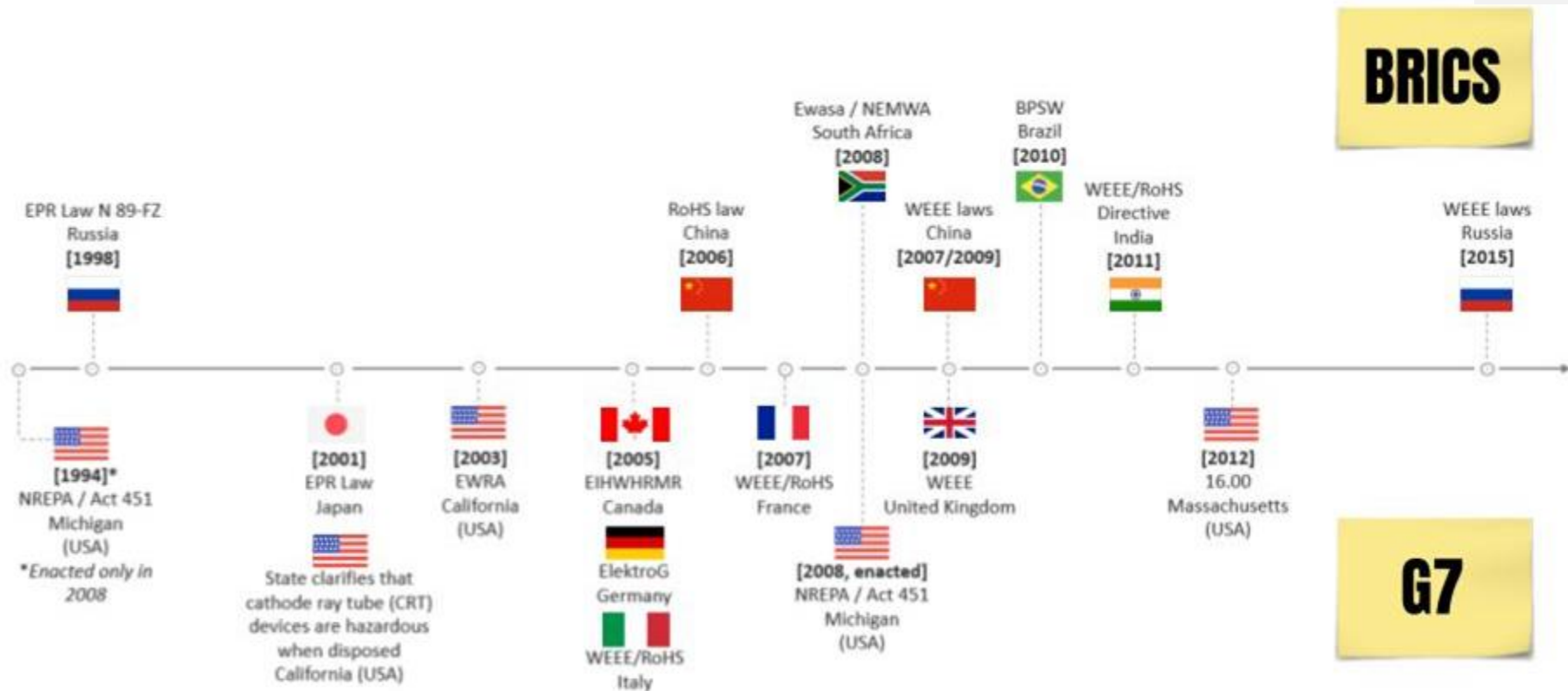
PÁTRIA AMADA
BRASIL
GOVERNO FEDERAL

TRADITIONAL MINING

- Prospection
- Mineral Research
- Project Design
- Mine Planning
- Mineral Production
- Ore Processing
- Mineral Recovering

URBAN MINING

- Disposal
- Collection
- Storage
- Pre-processing
- Destination
- Consolidation
- Reconditioning
- Recycling



Source: Ottoni et al., 2020

Mining

Value Recovering

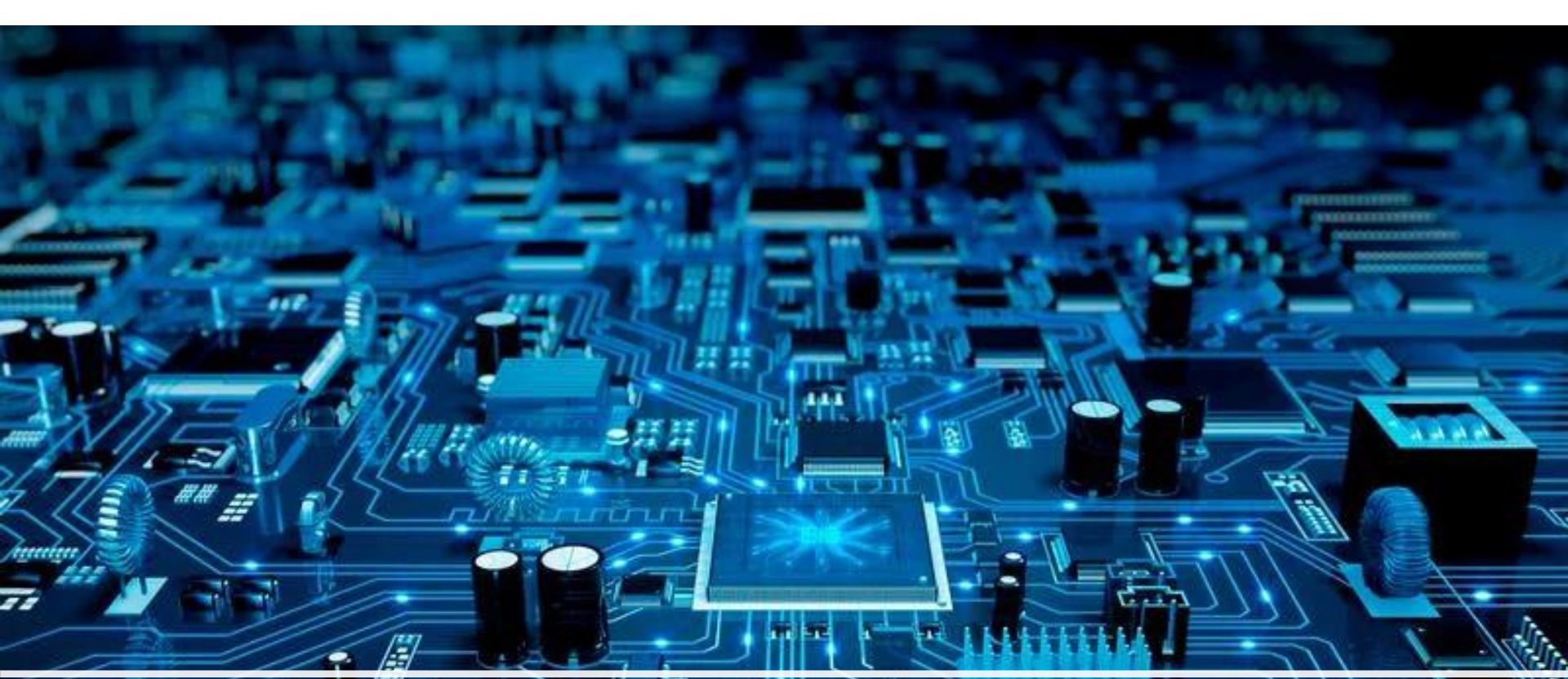


Critical, Strategic and Hazardous Materials





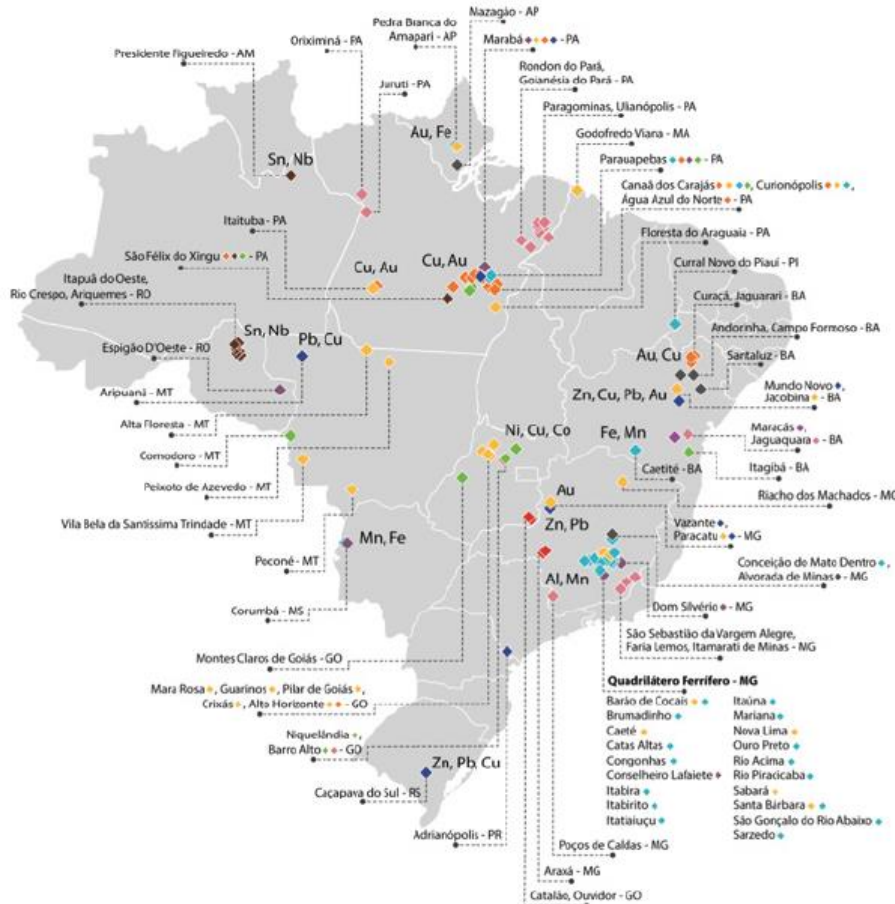
MINING AREA



MINING AREA



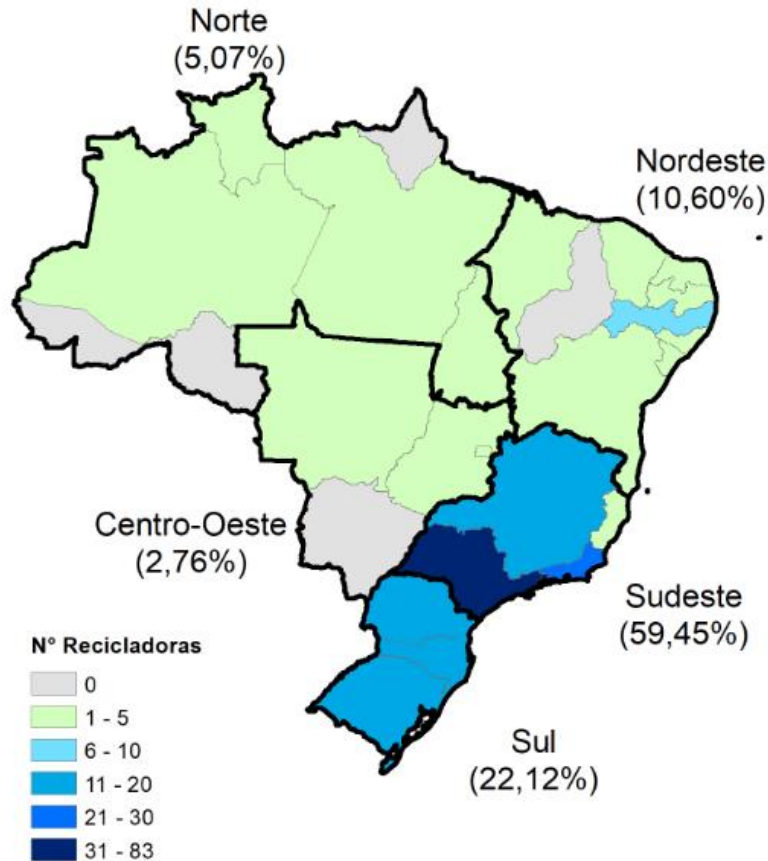
Main Mineral Spots in Brazil



- Alumínio (bauxita) / Aluminium (bauxite)
- Cobre / Copper
- Cromo / Chrome
- Estanho / Tin
- Ferro / Iron
- Manganês / Manganese
- Nióbio / Niobium
- Níquel / Nickel
- Ouro / Gold
- Vanádio / Vanadium
- Zinco / Zinc

Source: IBRAM, 2020

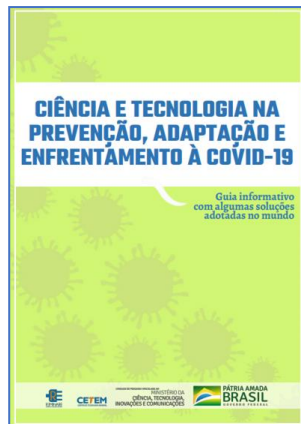
E-waste Urban Mines in Brazil



GUIDES



E-BOOKS & GUIDES



PÁGINA INICIAL > REMINARE

Repositório Mineralis e Biblioteca

Publicações

CETEM Sustentável

Reconhecimento

Links de Interesse

PESQUISA E DESENVOLVIMENTO

Áreas de Atuação

Programas Estratégicos 2017-2022 / Prioridades de PD&I do MCTI 2020-2023 / Objetivos do Desenvolvimento Sustentável (ODS)

R3MINARE

Publicado: Quarta, 13 de Novembro de 2019, 16h24 | Última atualização em Quarta, 03 de Junho de 2020, 14h52 | Acessos: 1255

Sobre Economia circular e mineração urbana REEE Projetos Projeto DATARE Central de conteúdos Equipe Contato

Sobre



O grupo de pesquisa do Centro de Tecnologia Mineral (CETEM/MCTIC) surgiu da iniciativa de estudos aplicados à Mineração Urbana de Resíduos Equipamentos Eletroeletrônicos a partir meados de 2017.

O R3MINARE traz como objetivos contribuir, dentro das premissas da Economia Circular, com pesquisas no campo científico-tecnológico e desenvolvimento de projetos voltados para Mineração Urbana de resíduos eletroeletrônicos, com o propósito de identificar o potencial de recuperação e reinserção de matéria-prima secundária e materiais críticos na

www.cetem.gov.br/reminare

PROJECT DATARE (2020-2021)







System dynamics applied to closed loop supply chains of desktops and laptops in Brazil: A perspective for social inclusion of waste pickers

Verônica Ghisolfi ^a✉, Gisele de Lorena Diniz Chaves ^b  ✉, Renato Ribeiro Siman ^c✉, Lúcia Helena Xavier ^d✉

Show more 

 Share  Cite



Resources Policy

Available online 23 August 2019, 101467

In Press, Corrected Proof



Sustainability and the circular economy: A theoretical approach focused on e-waste urban mining

Lúcia Helena Xavier ^a , Ellen Cristine Giese ^a, Ana Cristina Ribeiro-Duthie ^{a, b}, Fernando Antonio Freitas Lins ^a

Show more

Share Cite

<https://doi.org/10.1016/j.resourpol.2019.101467>



Get rights and content



A circular approach to the e-waste valorization through urban mining in Rio de Janeiro, Brazil

Marianna Ottoni ^{a, d} , Pablo Dias ^{b, c} , Lúcia Helena Xavier ^d  

Show more 

 Share  Cite

<https://doi.org/10.1016/j.jclepro.2020.120990>

Get rights and content

THANK YOU!

www.cetem.gov.br/reminare

lxavier@cetem.gov.br

