

WORKS AND EXAMPLES OF THE TECHNOLOGY & INNOVATION LAB

Yongdae Kim

IT Officer, Technology & Innovation Lab
World Bank Group Korea Office

Location

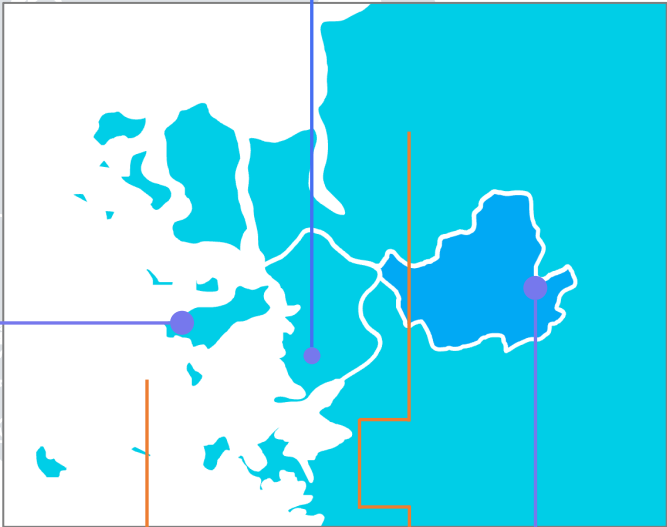
Why in Korea?

T&I Lab (DC)
Mail Stop MC 13-
1302, Washington, DC 20433
U.S.A

T&I Lab (KR)
Incheon tower-daero,
Yeonsu-gu, Incheon 22009,
Korea

International Airport

28km < 30min



Seoul
53km > 1h

<+2h
time zones

Location

Why in Korea?

T&I Lab (KR)

Incheon tower-daero,
Yeonsu-gu, Incheon 22009,
Korea



*Agile in responding to the
COVID-19 pandemic based on IT*



*Top the e-participation index of
the UN e-government survey*



*Many Korean partners with rich
development experience and resources*

“ **Leveraging Innovation and Technology for Development** ”

About us

We help WBG staff to explore emerging technologies and fosters a “learning by doing” approach through collaboration with partners.



Prototyping & Feasibility Study

In-house prototyping by hands-on experimentation and feasibility studies for WB Projects



Technology Advisory

Support WB operations to explore and operationalize emerging technologies



Knowledge & Partnership

Serves as an internal knowledge hub of emerging technologies and share Korea's expertise



TABLES of CONTENTS

01 Prototyping & Feasibility Study

02 Technology Advisory

03 Knowledge & Partnership

Use Case

Prototyping & Feasibility Study

CAN THO City
urban development and Resilience
(P152851, \$322M)



Three
Components

> Flood Risk Management and
Environmental Sanitation

> Urban Corridor Development

> Spatial Planning Platform and Financial
and Social Protection Instruments

We helped the sub-components

> Spatial Planning Platform

> Disaster Responsive Social
Assistance System

Prototype

Spatial Planning Platform (SPP)

single platform for spatial data



> Geodata Analysis

> Front-end Technologies

> Asynchronous Programming

> Authentication & Authorization

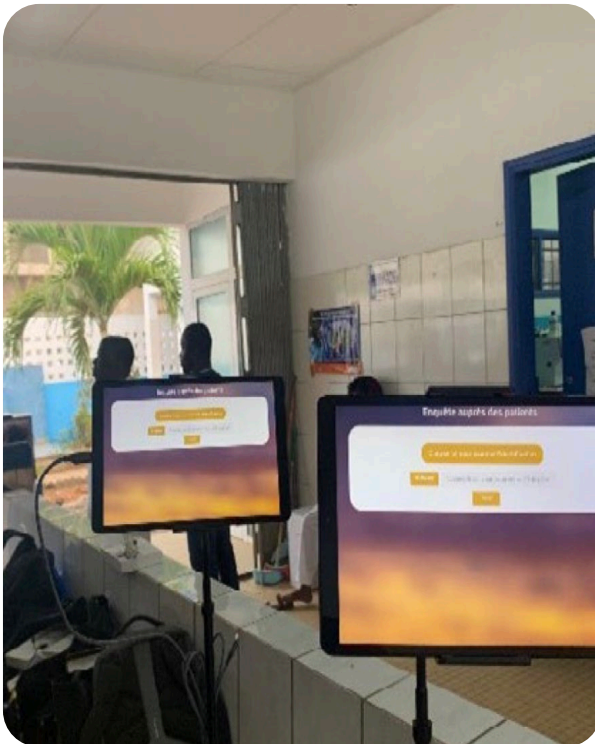
> Security

> Geospatial Database

Use Case

Prototyping & Feasibility Study

Blockchain for Health Results Based Financing in Core d'Ivoire



PROBLEM TO SOLVE

- Healthcare financing verification: costly, time-consuming (25% of project costs)



SOLUTION

- Explored blockchain's role in seamless healthcare records.
- Benefits for patients, providers, and financing program administrators.

Prototype

Health Result Based Financing (RBF)

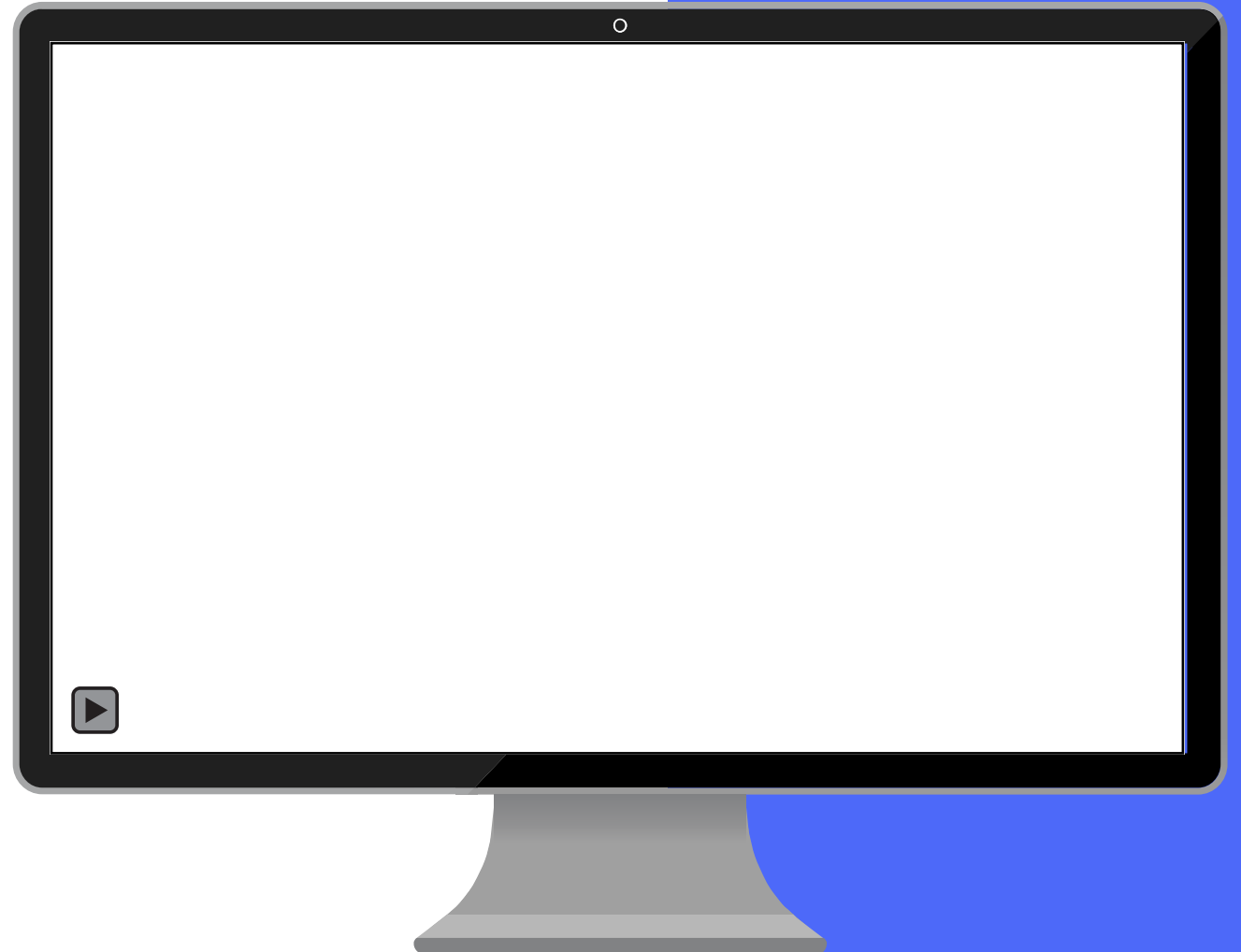
The health Global Practice in cooperation with the ITS T&I Lab identified and developed two initiatives to use blockchain

Technology Stack

NodeJS, Angular, Twilio SMS Gateway, Hyperledger Fabric, HTML5

Goals & Achievement

Provide faster verification and payments, Reducing leakages in supply chain for pharmaceutical goods



TABLES of CONTENTS

01 Prototyping & Feasibility Study

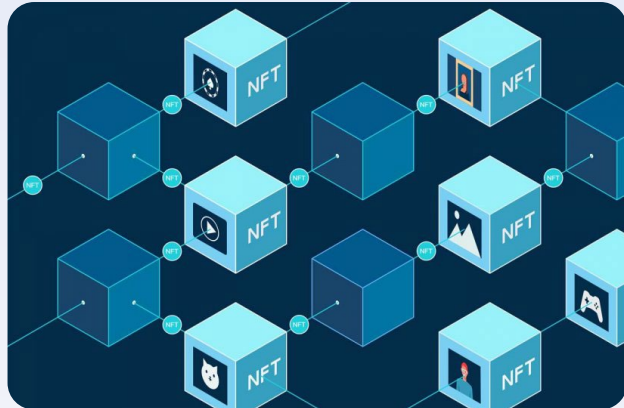
02 Technology Advisory

03 Knowledge & Partnership

TA

Technology Advisory Lists

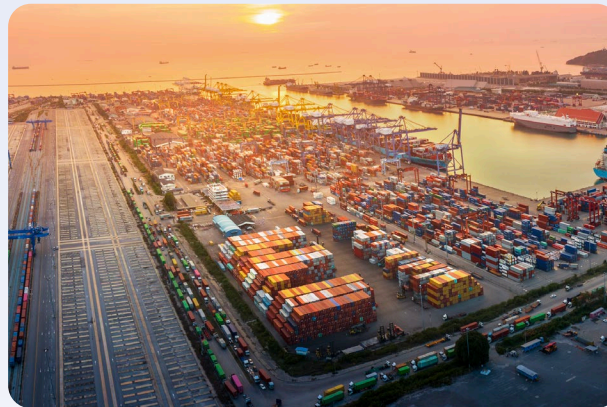
Help clients make informed decisions, mitigate risks, and achieve their goals by leveraging



Blockchain, CBDC

CBDC for Central Bank of Morocco, IMF & FCI

Focused on programmability, cybersecurity, technology risks



Token, ERC20

Tokenization of Asset Based Supply Chains

Design transparency and traceability and tokenization of value chains



System, Machine Learning

Review ToR for Implementation

Provide technical feasibility and budget adequacy

TABLES of CONTENTS

01 Prototyping & Feasibility Study

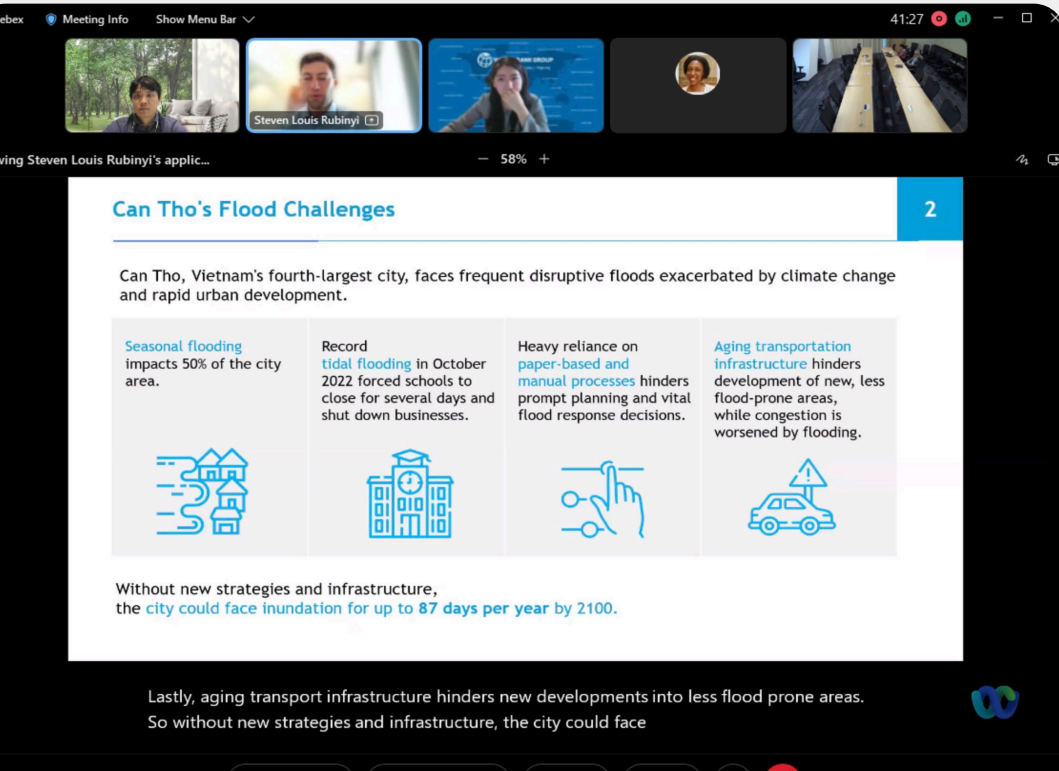
02 Technology Advisory

03 Knowledge & Partnership

Knowledge Sharing

Knowledge & Partnership

We have organized knowledge sharing sessions around emerging technologies with our Korean partners



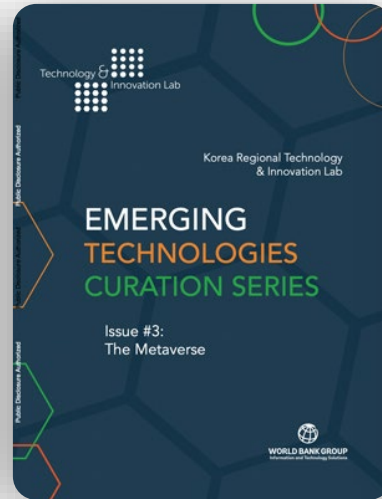
Knowledge & Partnership



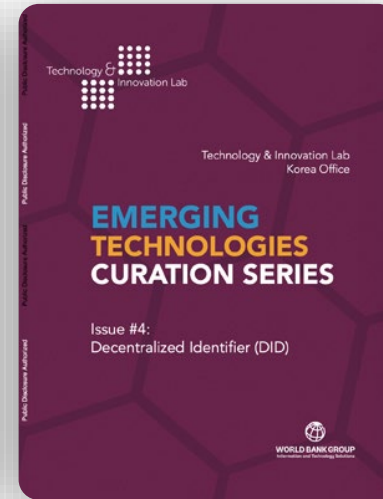
Blockchain



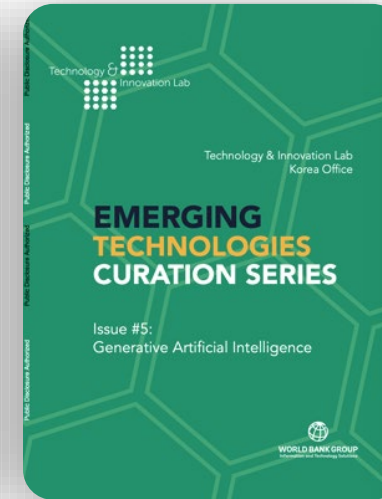
Edge Computing



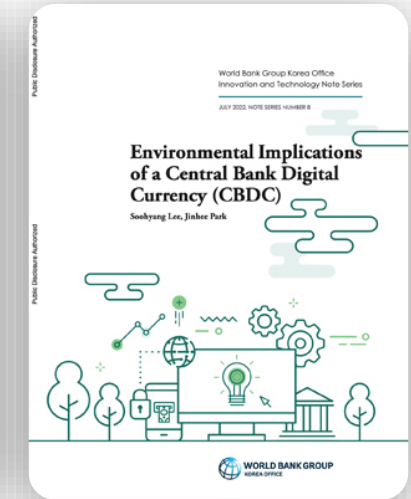
Metaverse



DID



Generative AI

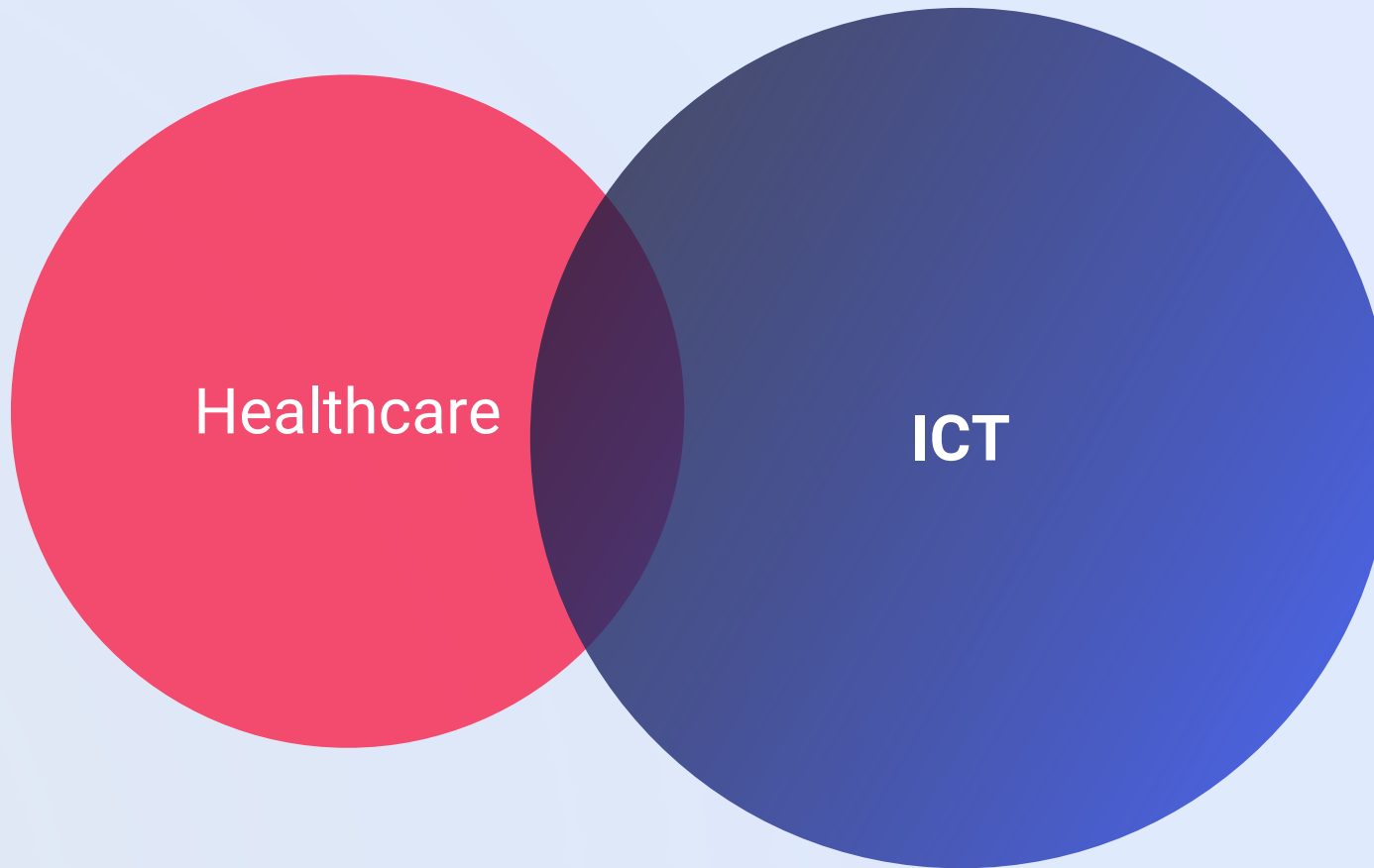


CBDC

Published five emerging technologies curation series and CBDC report with FCI

Healthcare & ICT

As ICT played a significant role in responding to Covid-19, it is also a critical area in other healthcare domains



- improve health
- medical diagnosis
- treatment
- preventive measures
- telemedicine / telehealth

- telecommunications
- machine learning
- data lakehouse
- blockchain
- AI
- Large Language Model

Contact Us

How to start an engagement?

Submit your engagement requests to work with our team

Email

ykim29@worldbankgroup.org

jpark23@worldbankgroup.org

Phone

+82-32-713-7057

Address

37F. Songdo Booyoung Tower 2, 241 Incheon tower-daero, Yeonsu-gu,
Incheon 22009, Korea



<https://forms.office.com/r/D3yHsifqzx>

negative feedbacks

0

offer pro bono

failure rate



Thank You