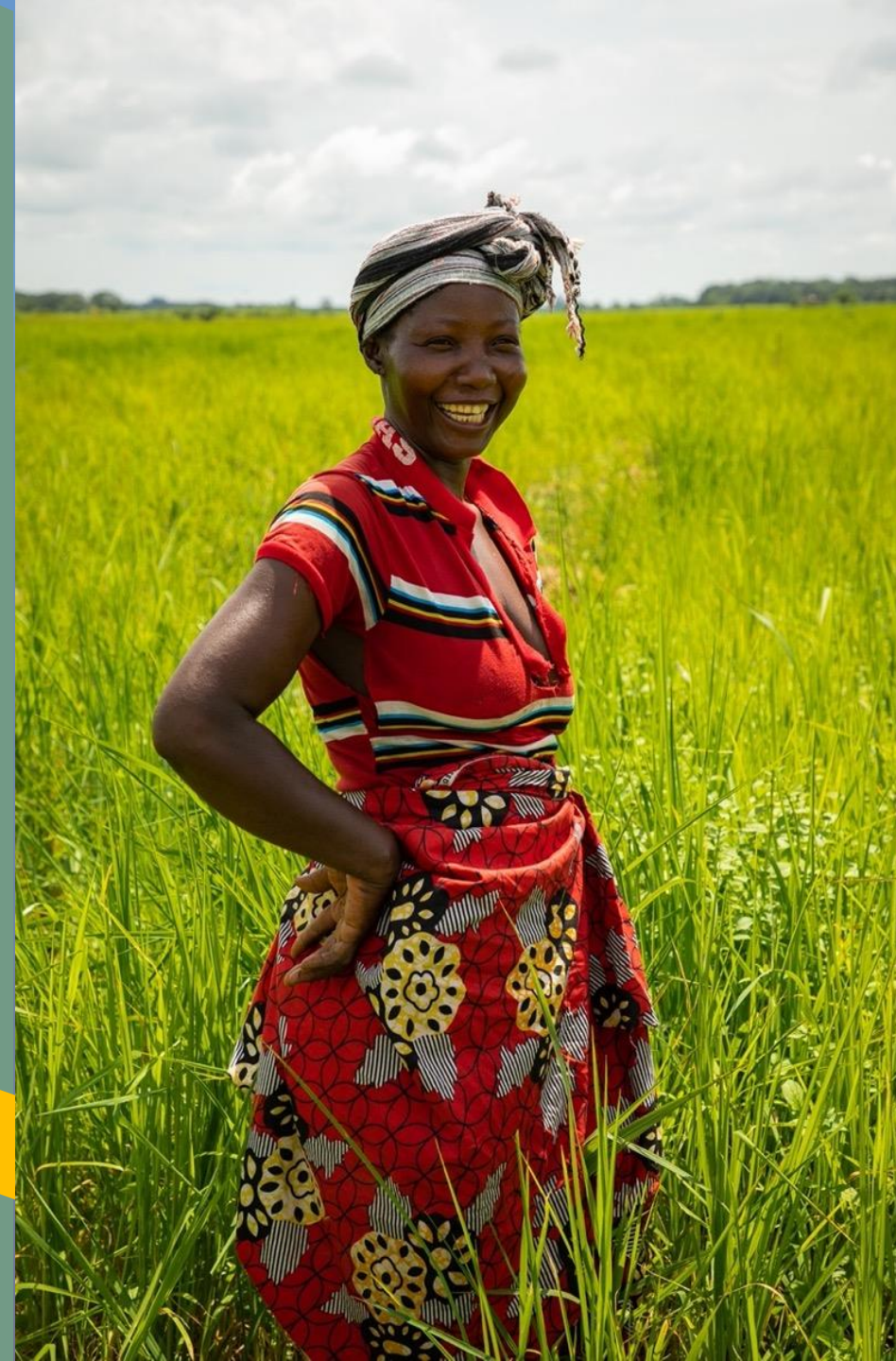


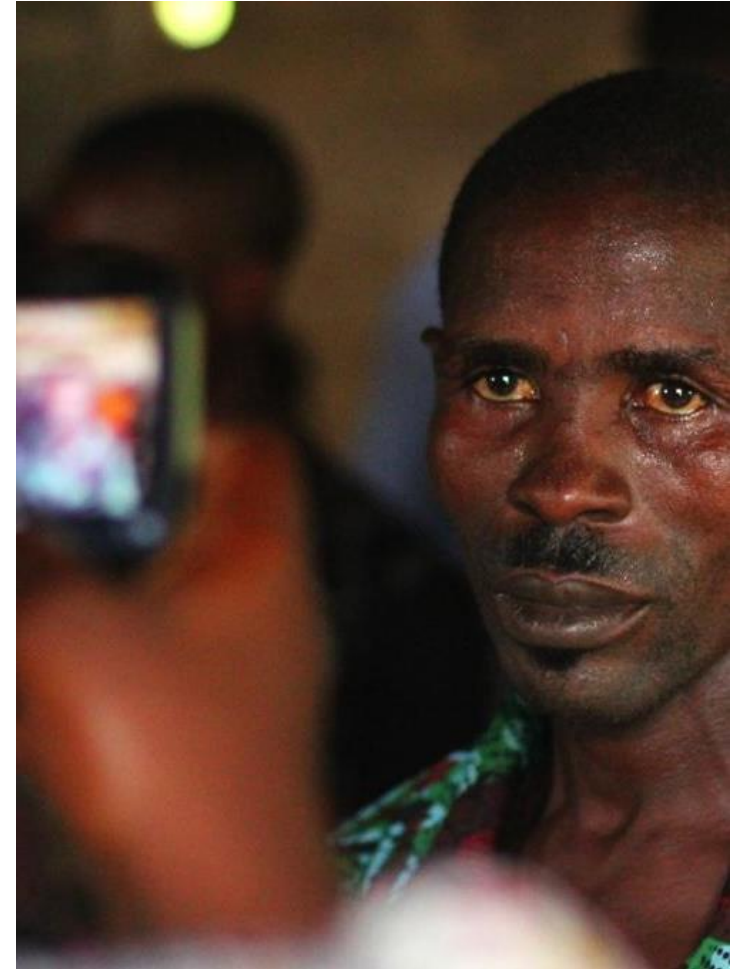
# Role of Information Systems for Efficient SP Program Implementation

Case study: CORE-MIS Demo



## INDEX

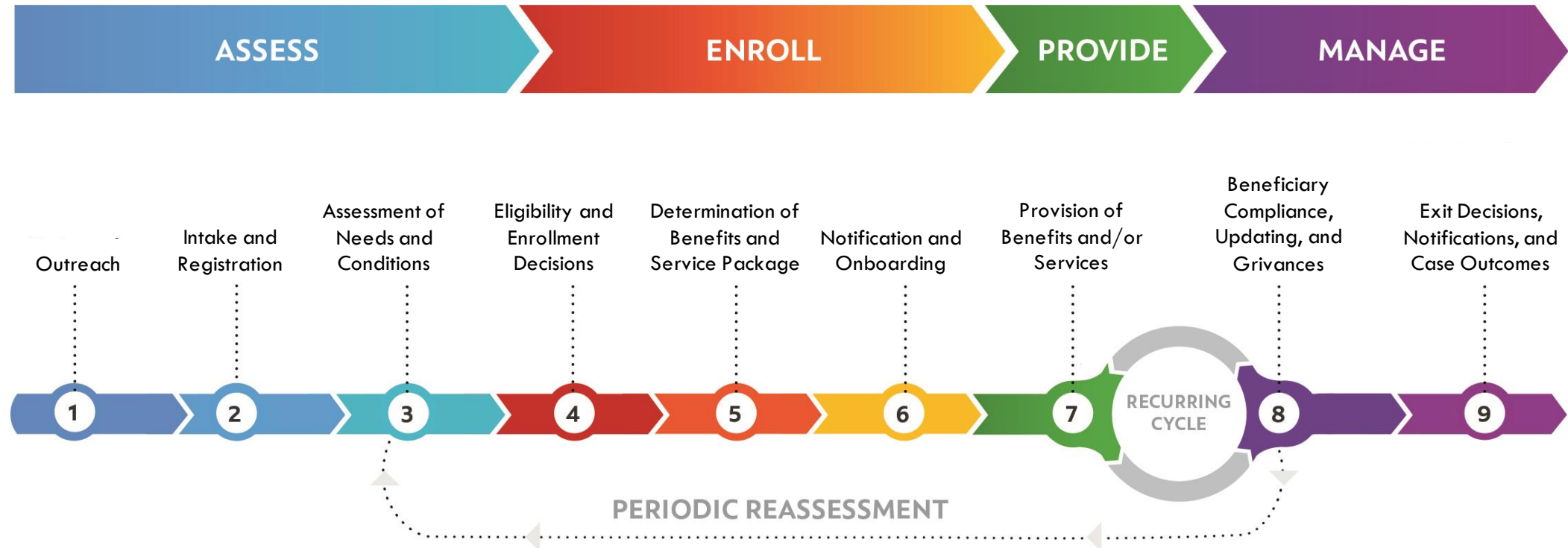
- 01 SP Management Information Systems
- 02 CORE-MIS overview
- 03 CORE-MIS demo



01

# SP MANAGEMENT INFORMATION SYSTEMS

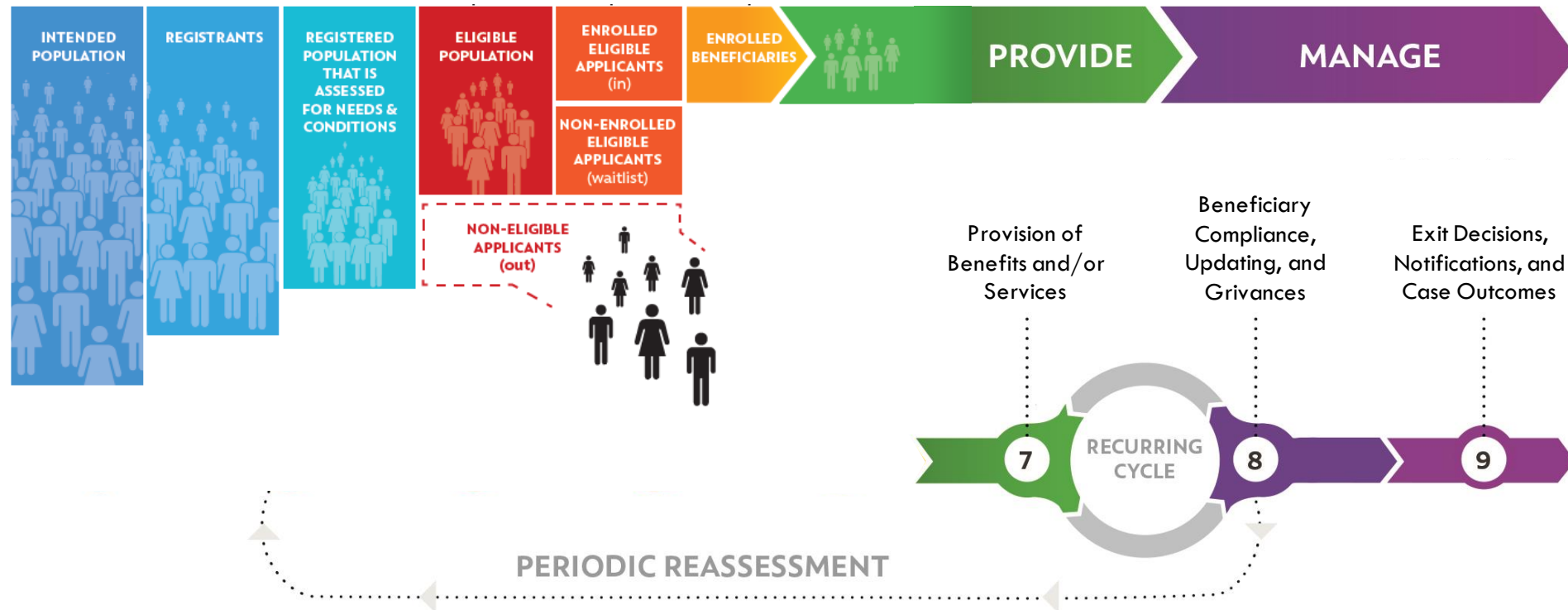
# SOCIAL PROTECTION DELIVERY CHAIN





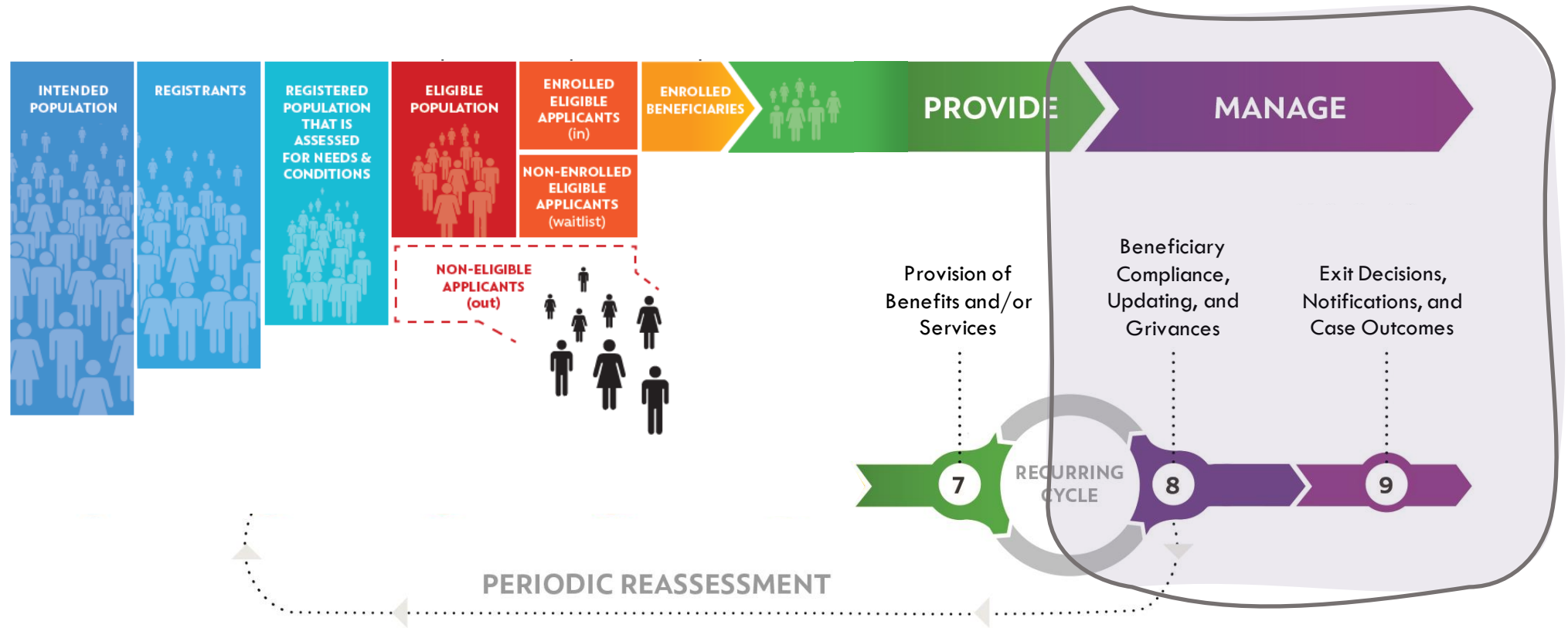
# SOCIAL PROTECTION DELIVERY CHAIN

## Focus on the Management Aspect



# SOCIAL PROTECTION DELIVERY CHAIN

## Focus on the Management Aspect



# EVENTS TO BE MANAGED ALONG THE PROGRAM IMPLEMENTATION

## Changes to HH



Basic Information of the household is dynamic



New members in the HH



HH members pass away



HH moves to another location



HH payment details change

- Benefits or services need to change to adjust to the addition or passing of a household member
- In some cases, beneficiaries are exited from the program as they move to a non-eligible location (in the case of geographical targeting).
- Point of service needs to be changed to facilitate access when beneficiaries change address.
- Payment instructions/methods need to be edited

# EVENTS TO BE MANAGED ALONG THE PROGRAM IMPLEMENTATION

## Conditionalities



Basic Information of the household is dynamic



Several program have a set of conditionalities that beneficiaries need to comply to receive a benefit or service



- In the case of CCTs, the transfer amount changes depending on the compliance
- In some cases, lack of compliance triggers additional accompanying measures
- In some labor market programs, there is sequence of activities, each of which needs to be completed to move on to the next.



# EVENTS TO BE MANAGED ALONG THE PROGRAM IMPLEMENTATION

## Grievances



Basic Information of the household is dynamic



Several program have a set of conditionalities that beneficiaries need to comply to receive a benefit or service



There may be grievances from the beneficiary that need to be addressed



# EVENTS TO BE MANAGED ALONG THE PROGRAM IMPLEMENTATION

## Errors or fraud



Basic Information of the household is dynamic



Several program have a set of conditionalities that beneficiaries need to comply to receive a benefit or service



There may be grievances from the beneficiary that need to be addressed



There may be voluntary or involuntary errors that need to be monitored & corrected

- Implement the set of corrections in terms of:
  - Beneficiary status
  - Benefit or service package
  - Delivery logistics
  - Etc.

## MAIN PROCESSES TO HANDLE THE EVENTS



Beneficiary Data  
Management



Conditionalities  
Monitoring



GRM



Reconciliation from  
Previous Cycle

## MAIN PROCESSES TO HANDLE THE EVENTS



Beneficiary Data  
Management



Conditionalities  
Monitoring



GRM



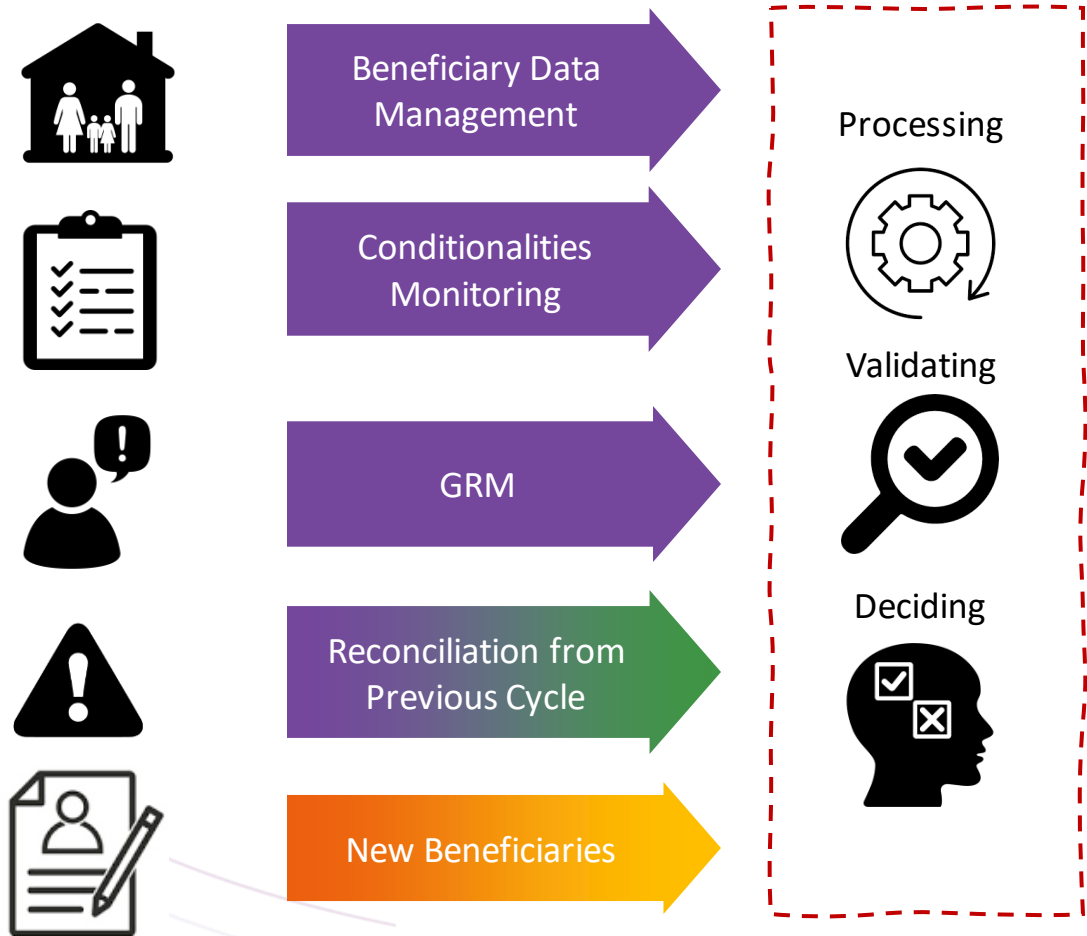
Reconciliation from  
Previous Cycle



New Beneficiaries

# MAIN PROCESSES TO HANDLE THE EVENTS

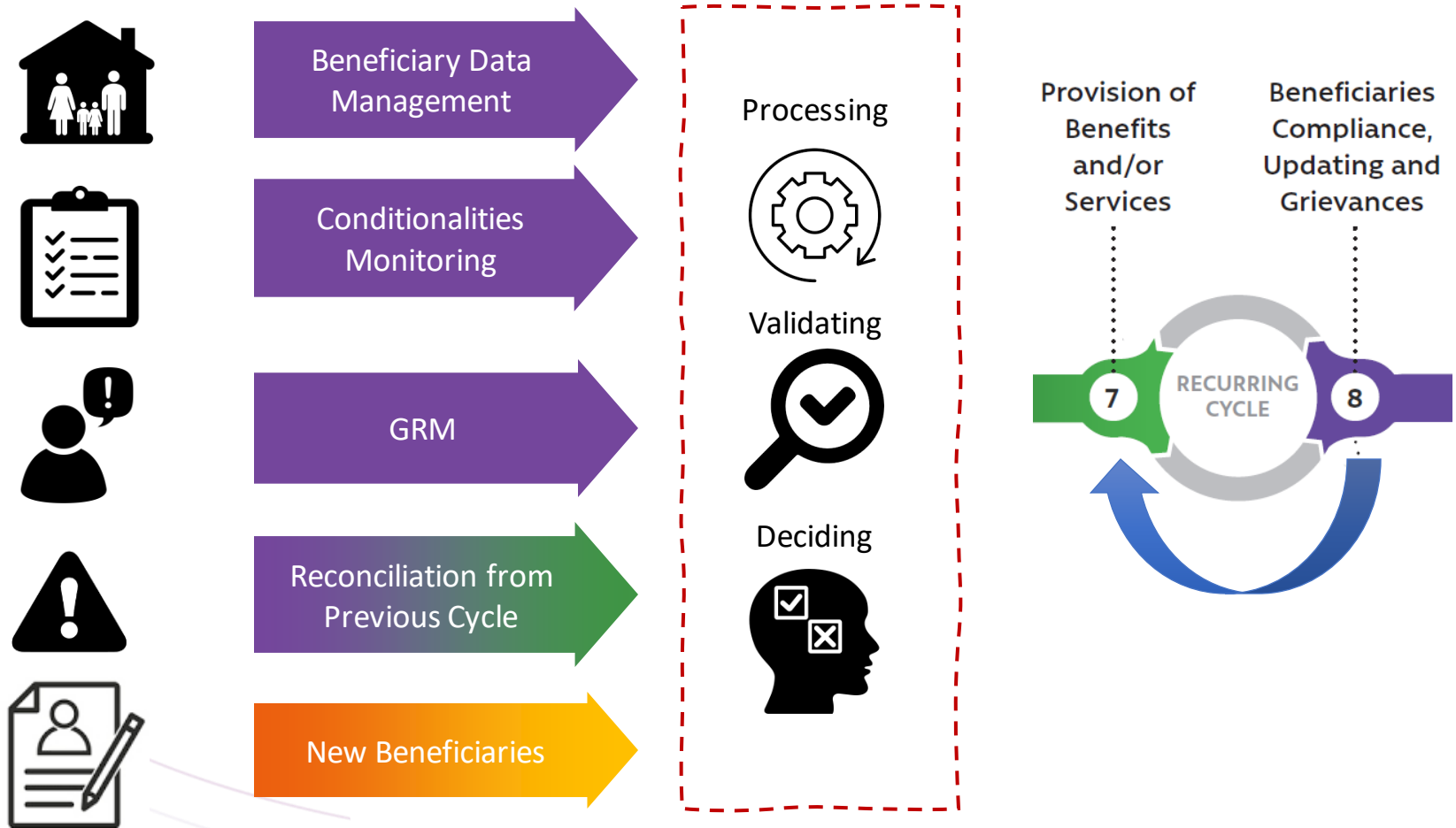
## Decisions





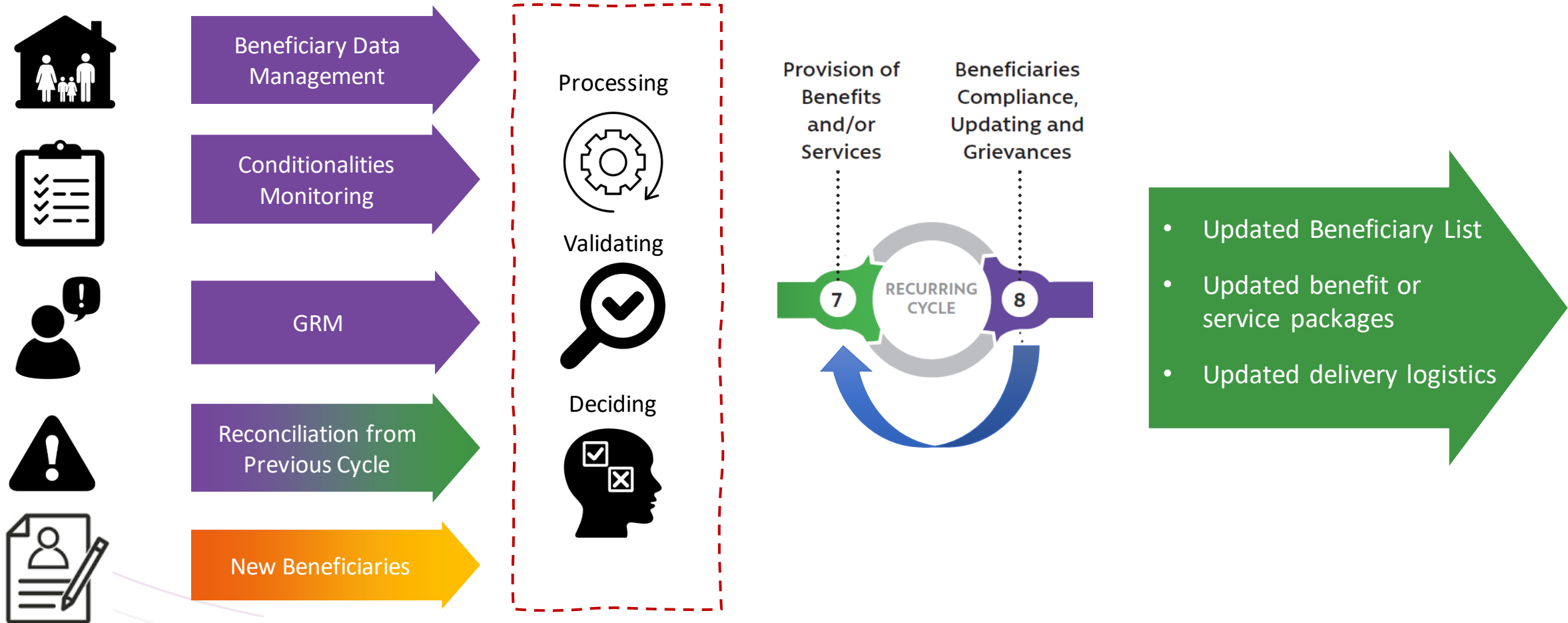
# MAIN PROCESSES TO HANDLE THE EVENTS

## Updates



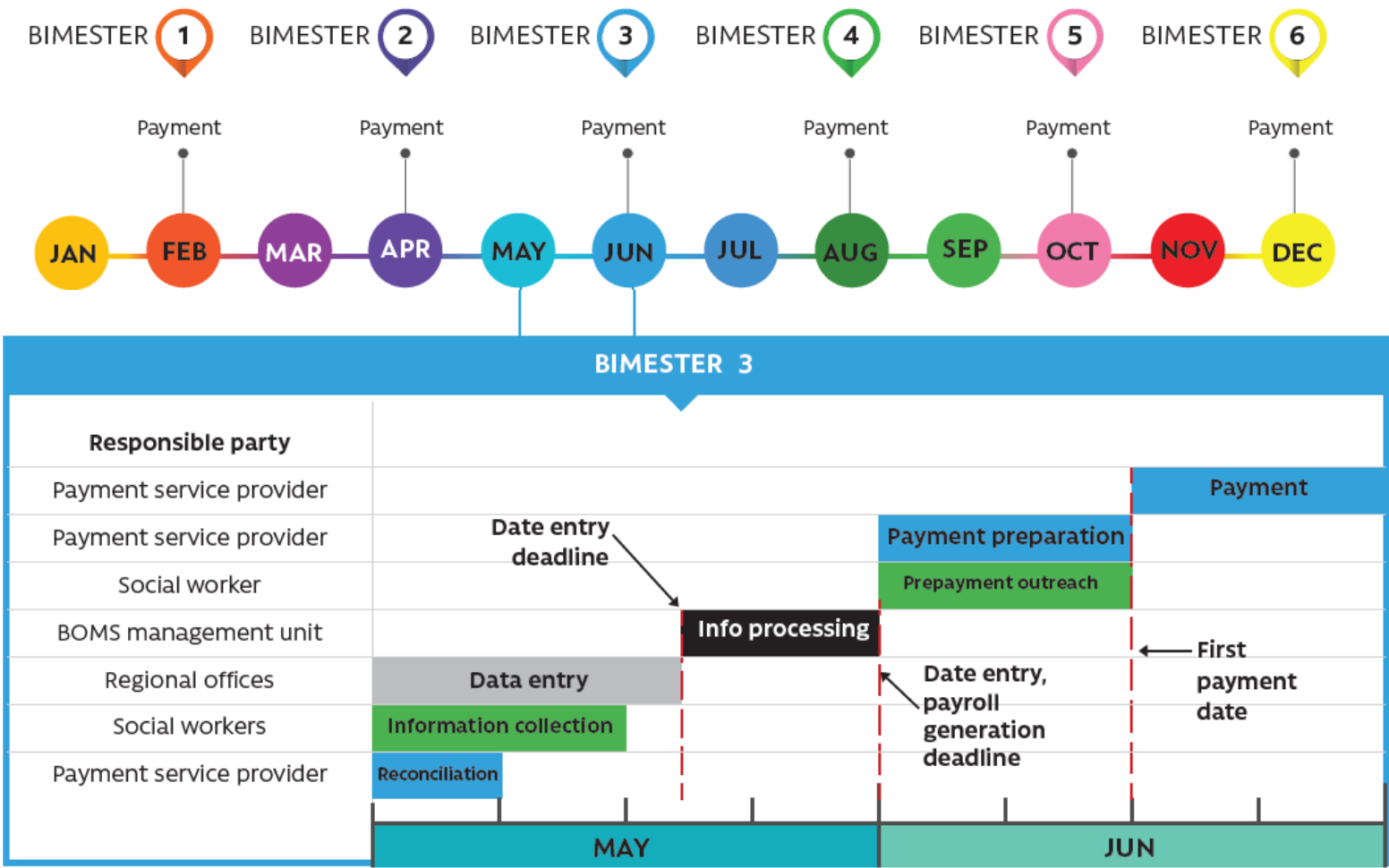
# MAIN PROCESSES TO HANDLE THE EVENTS

## Accurate service delivery



# PLANNING IS CRITICAL TO ENSURE ACCURACY AND TIMELINESS OF SERVICE DELIVERY

## Sample payment plan



## APPROACHES TO DATA UPDATE

### **On-Demand Schemes**

This is one of the most commonly used updating strategies and relies on beneficiaries proactively informing program administrators of any change that has taken place in their basic household information

### **Scheduled Program Triggered**

Are those that are triggered by a scheduled procedure. Normally these procedures involve updating the complete beneficiary roster; it may also entail cross-referencing with other administrative databases

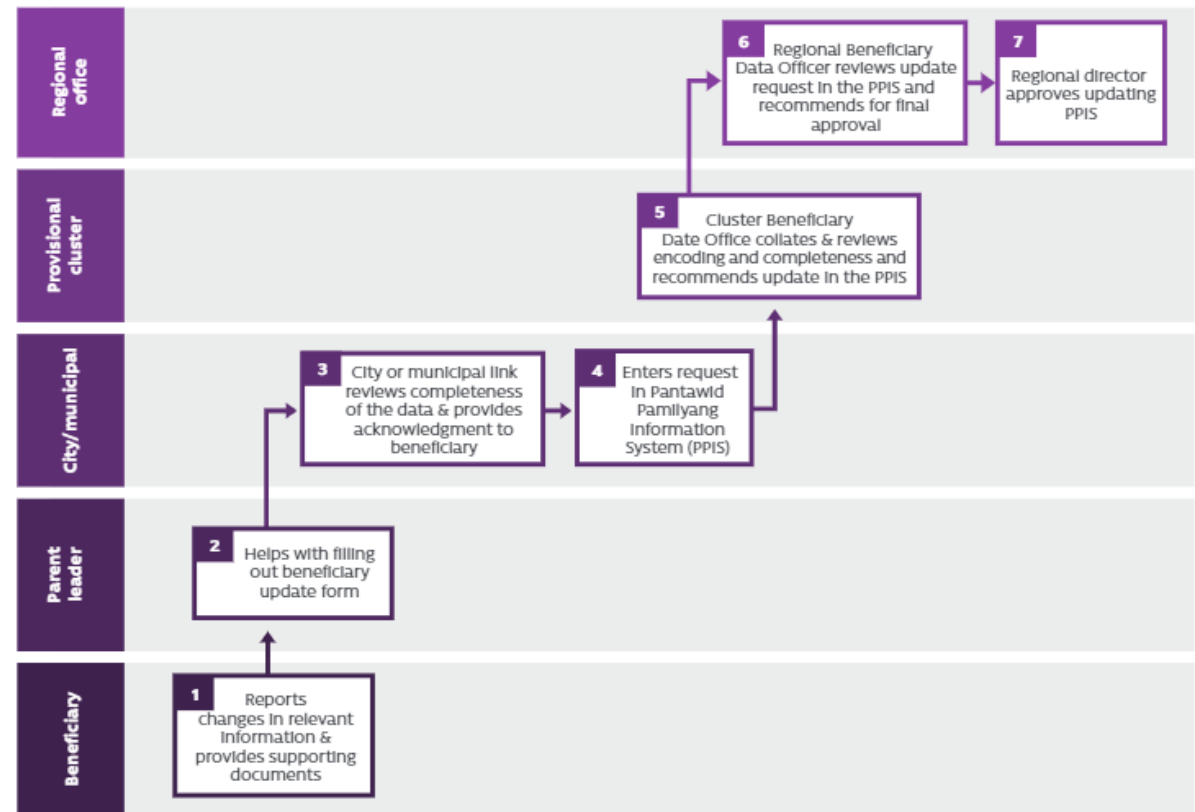
# APPROACHES TO DATA UPDATE

## On-Demand Schemes

This is one of the most commonly used updating strategies and relies on beneficiaries proactively informing program administrators of any change that has taken place in their basic household information

## Scheduled Program Triggered

Are those that are triggered by a scheduled procedure. Normally these procedures involve updating the complete beneficiary roster; it may also entail cross-referencing with other administrative databases





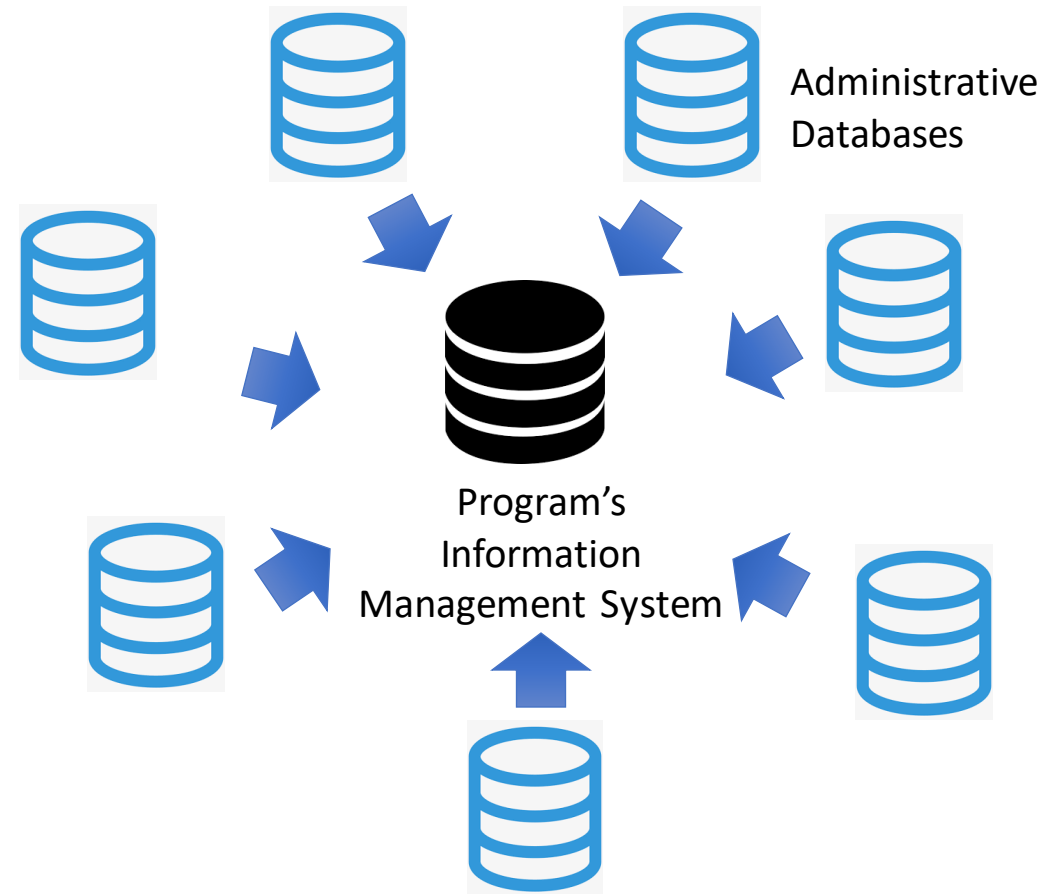
## APPROACHES TO DATA UPDATE

### On-Demand Schemes

This is one of the most commonly used updating strategies and relies on beneficiaries proactively informing program administrators of any change that has taken place in their basic household information

### Scheduled Program Triggered

Are those that are triggered by a scheduled procedure. Normally these procedures involve updating the complete beneficiary roster; it may also entail cross-referencing with other administrative databases



02

# CORE-MIS

## Overview

# EXAMPLE OF MANAGEMENT INFORMATION SYSTEM

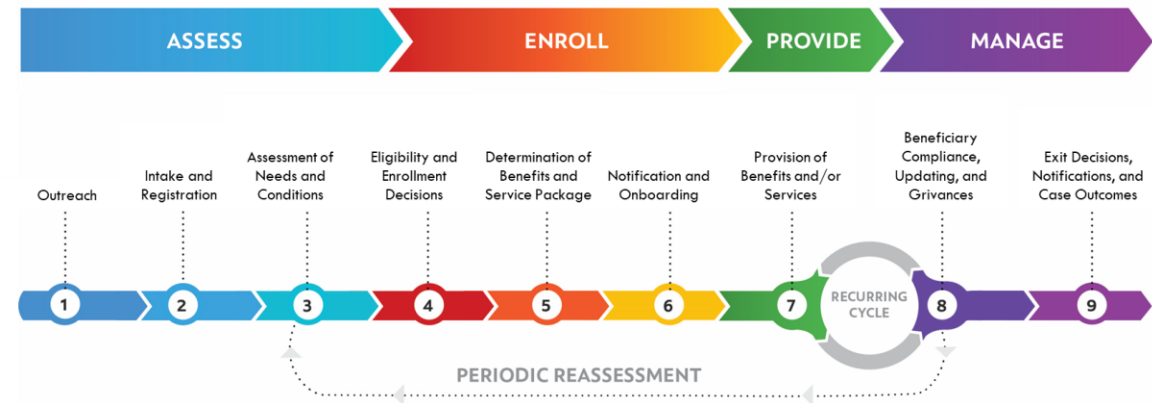
## CORE-MIS (powered by openIMIS)

**Modular Open-Source Solution designed to support implementation of Social Protection programs.**

Since 2023 merged with openIMIS solution to offer a **digital public good** capable of handling diverse schemes, including cash transfers, economic inclusion programs, health insurance, employment injury insurance, and voucher schemes.

**LICENCE:** GNU AGPL v3 License as published by the Free Software Foundation - Free to use, modify, and redistribute (also freely)

**Source code:** [github.com/openimis](https://github.com/openimis)



- Cash transfer programs
- “cash plus” & “public works”
- Economic inclusion programs
- Grievance Redress Mechanism



CORE - MIS



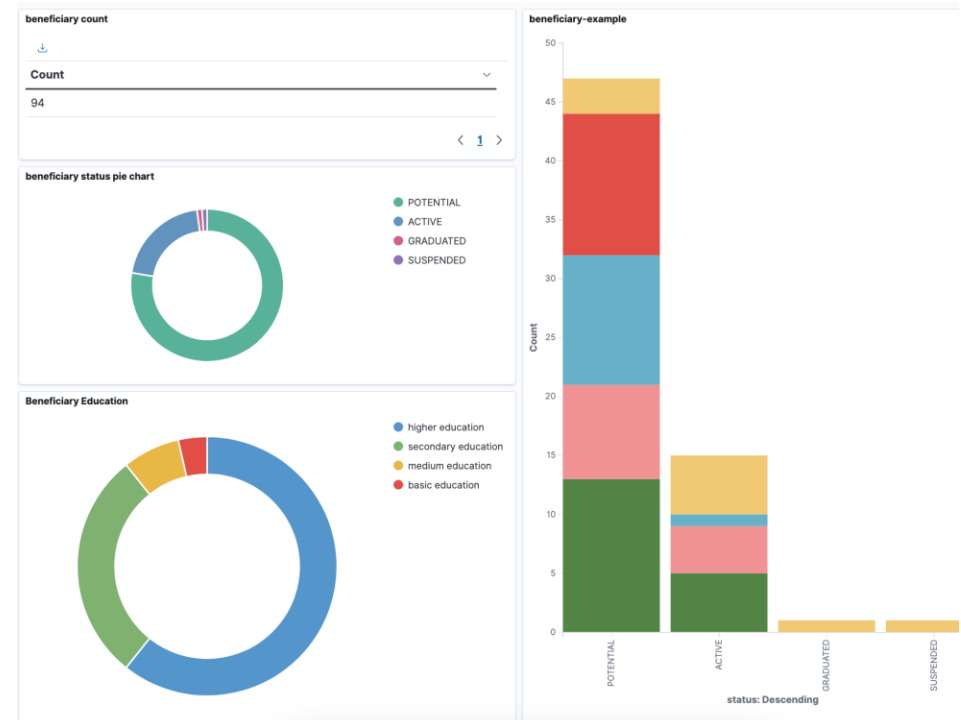
openIMIS

- Health insurance (formal & informal)
- Voucher scheme
- Employment Injury Insurance

# EXAMPLE OF MANAGEMENT INFORMATION SYSTEM

## CORE-MIS (powered by openIMIS) Functionalities

- CORE-MIS functionalities are being added to the already extensive capabilities of openIMIS.
- Current main use case is unconditional CT:
  - Import and manage beneficiaries of SP program(s)
  - Generate and reconcile payments
  - Analyze data through interactive customizable dashboards
  - Basis for Social Beneficiary Registry
- Migration of functionalities is performed by developers contracted by GiZ, from guidance from WB team.
- Additional modules planned for release in the upcoming months (including Targeting, Social Registry, GRM)



# EXAMPLE OF MANAGEMENT INFORMATION SYSTEM

## CORE-MIS (powered by openMIS) Deployment Approach

### IMPORTANT:

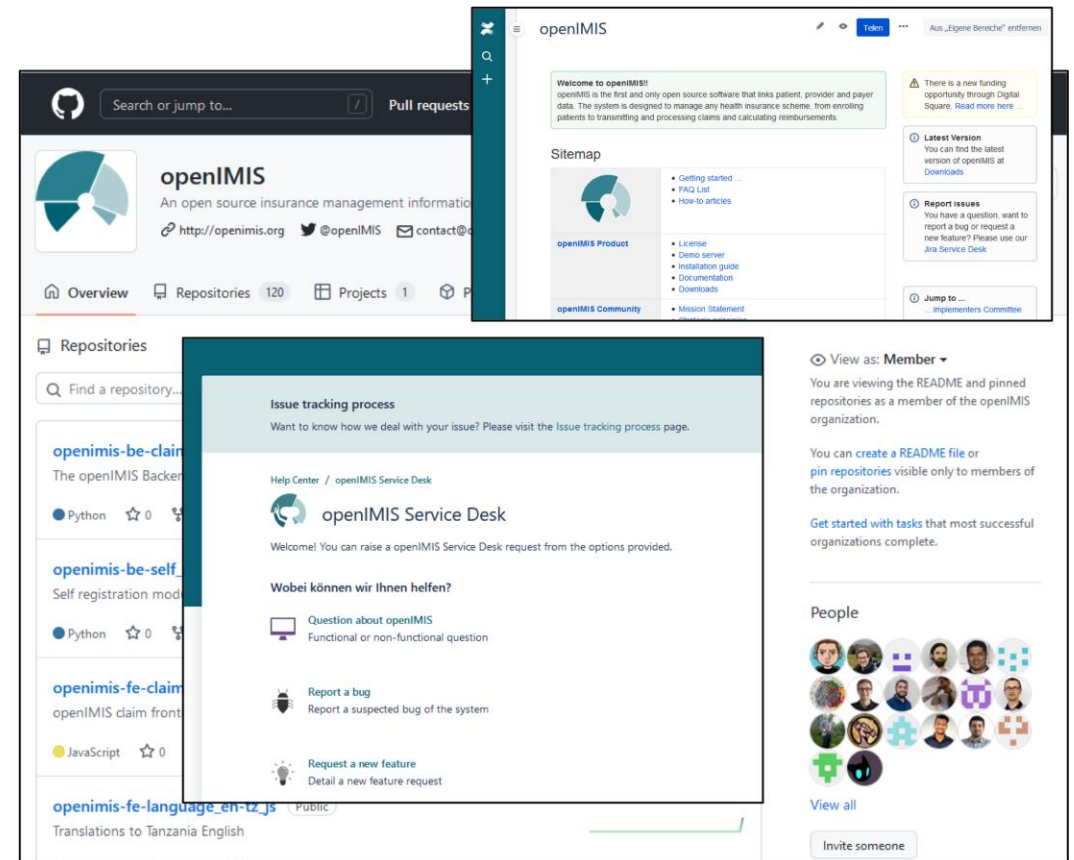
- This is not Software as a service (SaaS)
- The application should be deployed in secure servers chosen and managed by the client
- The client is responsible for maintaining the integrity of stored data and for hosting the platform

### Software

- No license costs
- No costs for joining the initiative

**Customization, hosting, and maintenance have associated costs**

**Community and Resources available**





03

**CORE-MIS**

**Demo**



# THANK YOU