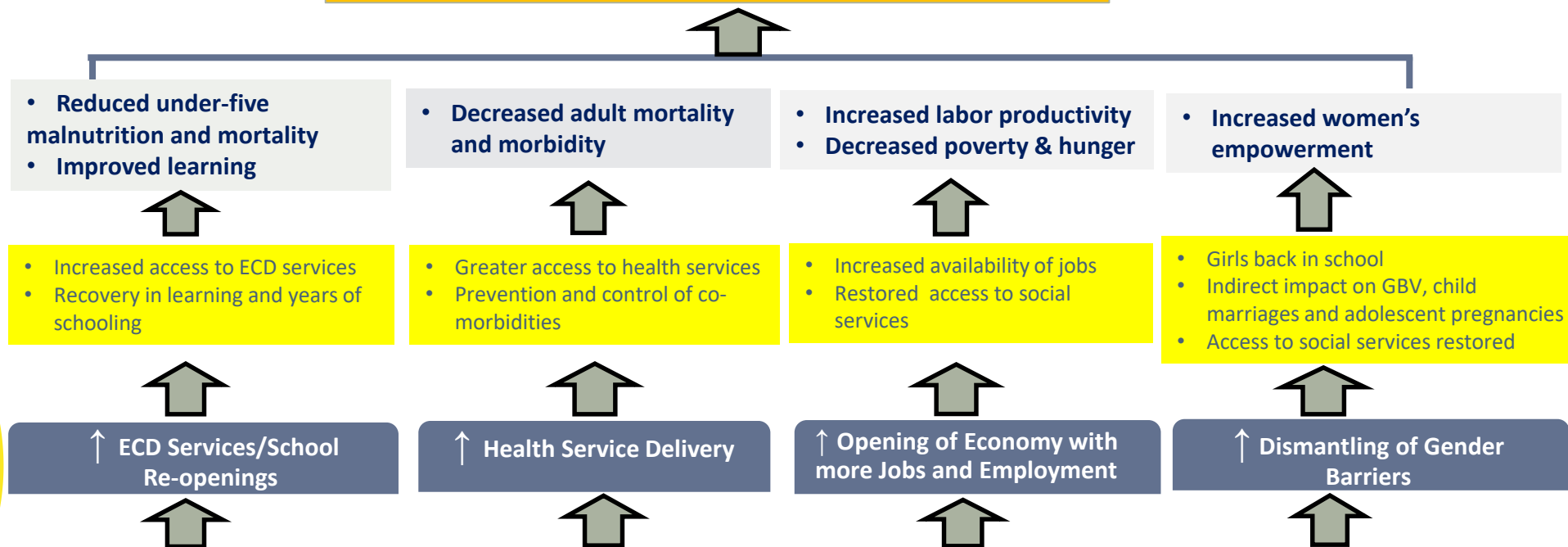
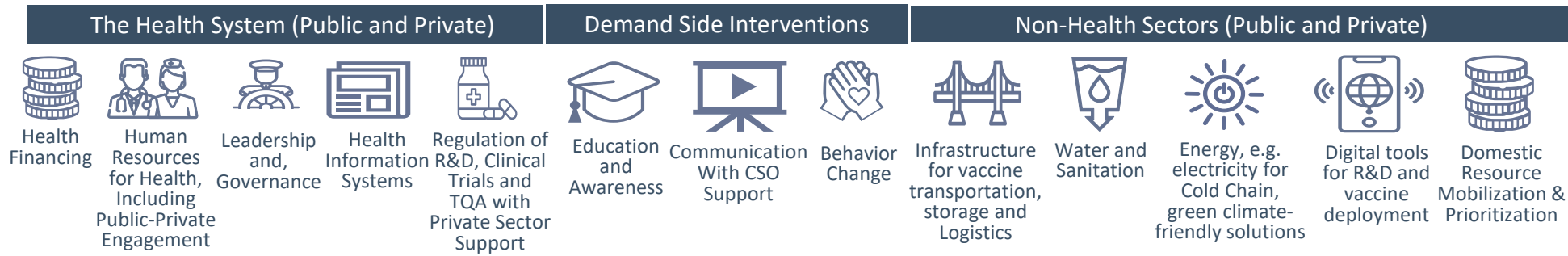


↑ Human Capital Built, Protected & Utilized



Vaccine deployment will require a national level **“whole-of-society”** approach, including:



And International Support: Clinical Trial Collaboration; Technology Transfer; Procurement & Logistics Assistance; Implementation Support; Debt Forgiveness; Concessional Financing; Harmonization of Aid

HOW CAN VACCINES FOR COVID19 ADVANCE HUMAN CAPITAL OUTCOMES?