

Natural capital accounting

Land and ecosystem accounting – Final Session

1-2 November 2023

Addis Ababa

Michael Vardon

Associate Professor, Environmental Accounting

Fenner School of Environment and Society

michael.vardon@anu.edu.au



Australian
National
University



ECOSYSTEM ACCOUNT FOR ETHIOPIA

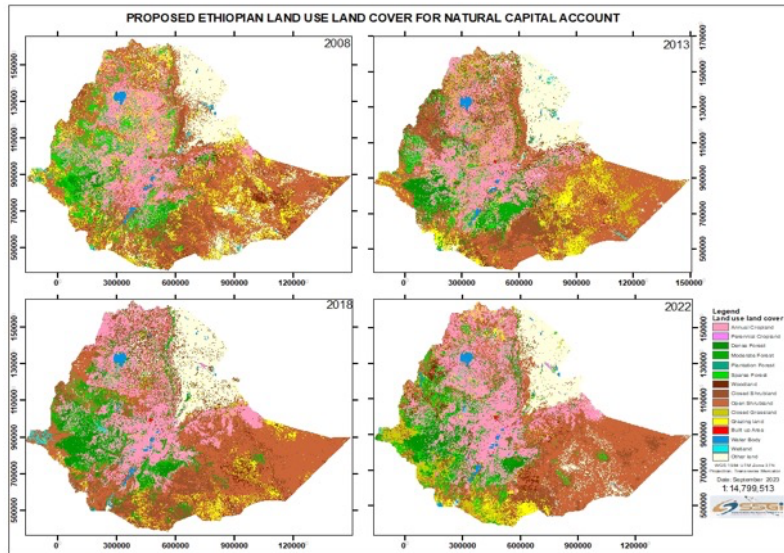


National land cover table and maps Version 1

Development of land cover classification



Maps

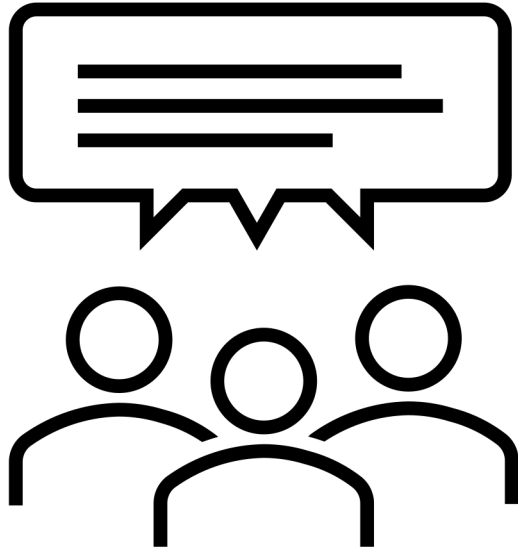


Table

LAND USE LAND COVER AREA IN SQUARE KILOMETER				
Area Cover	2008	2013	2018	2022
Dense Forest	36412.2522	64619.0838	50047.2927	41006.1881
Moderate Forest	21164.5944	26973.1476	56992.815	61277.2756
Sparse Forest	80240.0553	47919.897	46288.0044	54021.6193
Woodland	14554.4211	23899.86	17640.9405	19398.0003
Closed Grassland	11328.7311	71154.1251	12905.6508	52329.9522
Grazing land	111645.8577	62820.8118	31090.4442	31754.0366
Closed Shrubland	109701.3456	122848.2504	108219.9015	105775.4886
Open Shrubland	383290.2792	345168.2025	421283.6406	337001.7188
Perennial Cropland				
	809.1603	1142.1972	1869.9246	3292.9916
Annual Cropland	207542.9232	225797.3334	243936.4896	278891.4326
Wetland	5897.7414	4303.5084	2940.3261	2895.5026
Water Body	7825.455	8225.4672	8157.2787	10771.9108
Built up Area	1586.1465	1724.8383	2021.9283	3042.6639
Other Land	140441.2974	126062.2017	128630.4705	130538.2153
Plantation Forest	744.1182	594.765	1299.8484	1237.194
Total	1133184.379	1133253.689	1133324.956	1133234.19



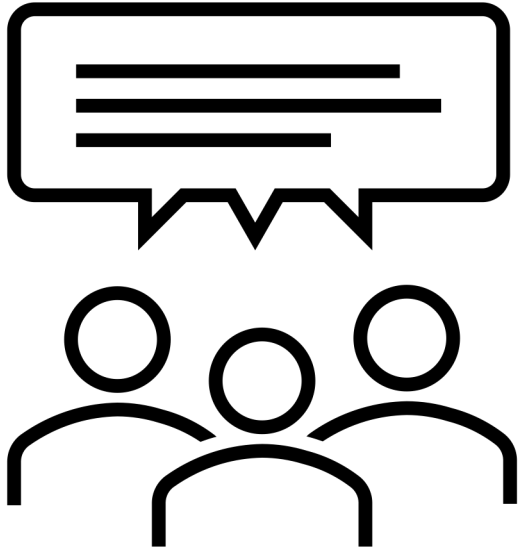
Questions for the design of ecosystem accounts



All for group discussion and report back

1. What policies, programs or decisions could ecosystem accounts inform?
2. What types of accounts could inform these policies and decisions
3. What ecosystems and ecosystem services are of most interest?
4. What regions/areas are of most interest?
5. What work on ecosystem services has already occurred in Ethiopia (e.g., IPT)

Questions for production of ecosystem accounts



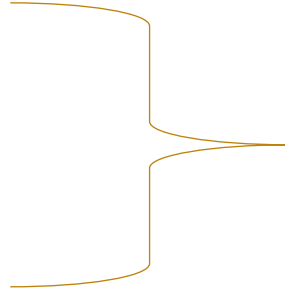
All for group discussion and report back

1. What data are available?
 1. Environmental
 2. Economic
 3. Social
 4. Administrative
2. What skills and expertise is available?
3. What institutional arrangements are needed?
4. What capacity needs to be built?

A plan for ecosystem accounting

Prioritize lists of

- Ecosystem services
- Ecosystems
- Regions and areas



Based on policy and management needs

Identify data sources

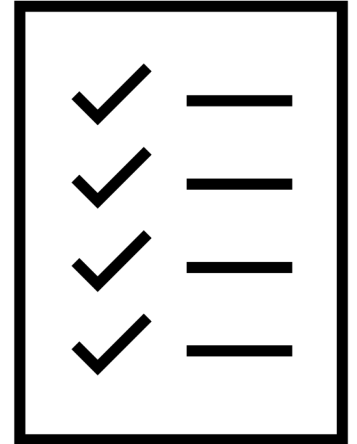
- Environmental, economic, and social
- Assess availability of data sources

Identify previous work on ecosystem services in Ethiopia and nearby

Task list and responsibilities

- Agencies and people

Timeline



Key lessons from natural capital accounting

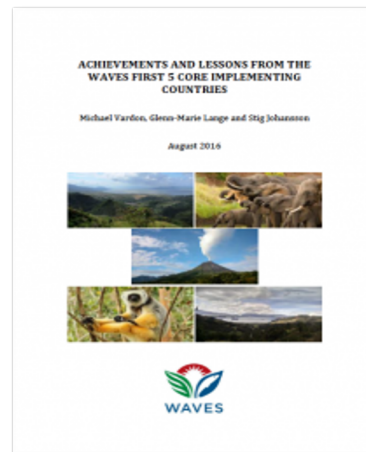
- Need sustained high-level institutional support
- Strong partnerships (co-design)
- Clear responsibilities and people are allocated time
- Need links to policy and decision-making
- Experimental accounts are useful (but need to lead somewhere)
- Accounts get better over time and usefulness is increased when repeated

Cooperation

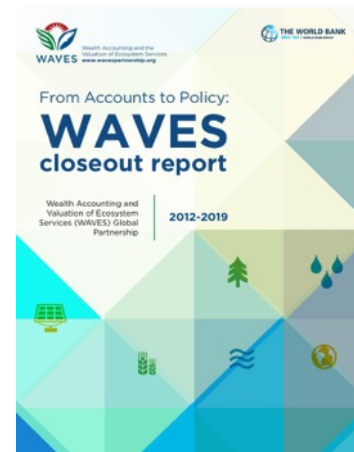
Cooperation

Cooperation

Cooperation



<https://www.wavespartnership.org/en/knowledge-center/achievements-and-lessons-waves-first-5-core-implementing-countries>



<https://www.wavespartnership.org/en/knowledge-center/edit-knowledge-center-accounts-policy-waves-closeout-report-2012-2019>



What does
success
look like?



THANK YOU



Contact

Michael Vardon
Associate Professor
Environmental Accounting
Fenner School of Environment and Society
T +61 (0)447 825 351
E michael.vardon@anu.edu.au
T <https://twitter.com/MichaelVardon>



Australian
National
University