

GovTech Maturity Index (GTMI) 2022 Update

Cem Dener, Lead Governance Specialist & Global Lead for GovTech

June 2022

Supported by:

The [GovTech Global Partnership](#) (GTGP) & The [KDI School](#) (Republic of Korea)

AGENDA

*GovTech Maturity Index (GTMI)
2022 Update*

What is GovTech?

GovTech Maturity Index (GTMI)

GTMI Groups

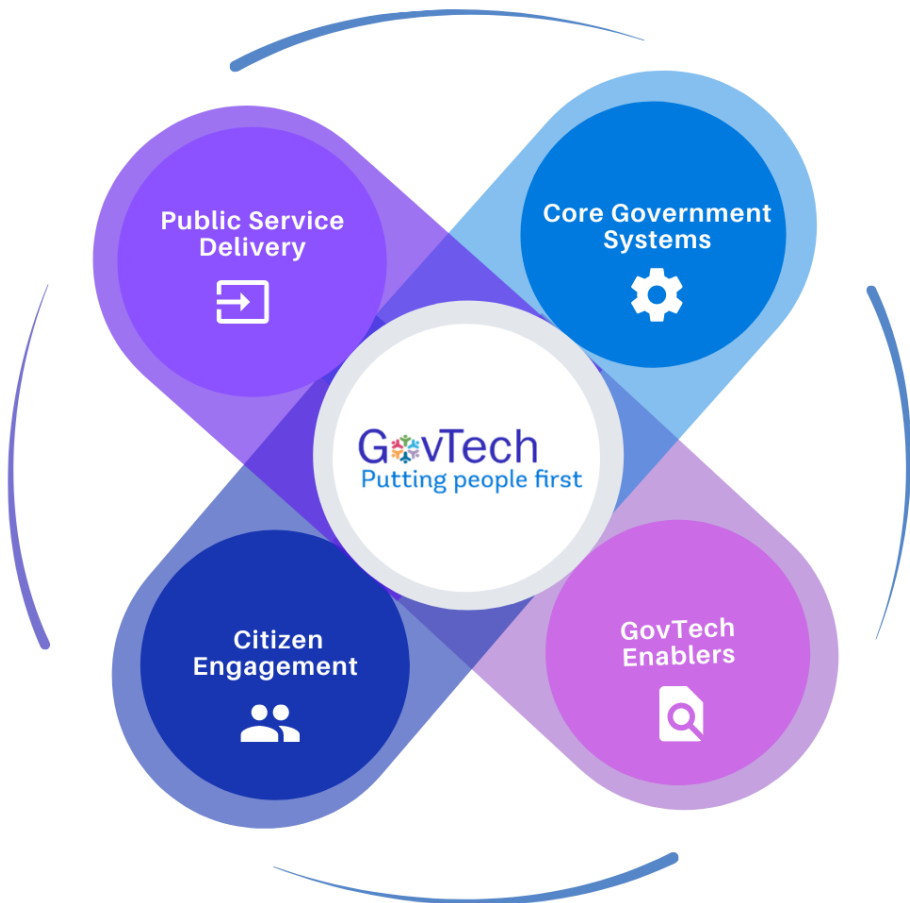
GTMI: International Outlook 2020

2022 GTMI Survey & Update: Timeframe

Q&A

What is GovTech?

GovTech is a whole-of-government approach to public sector modernization that promotes simple, efficient and transparent government with the citizen at the center of reforms.



The GovTech approach emphasizes three aspects of public sector modernization:

A whole-of-government approach to digital transformation

Universally accessible citizen-centric services

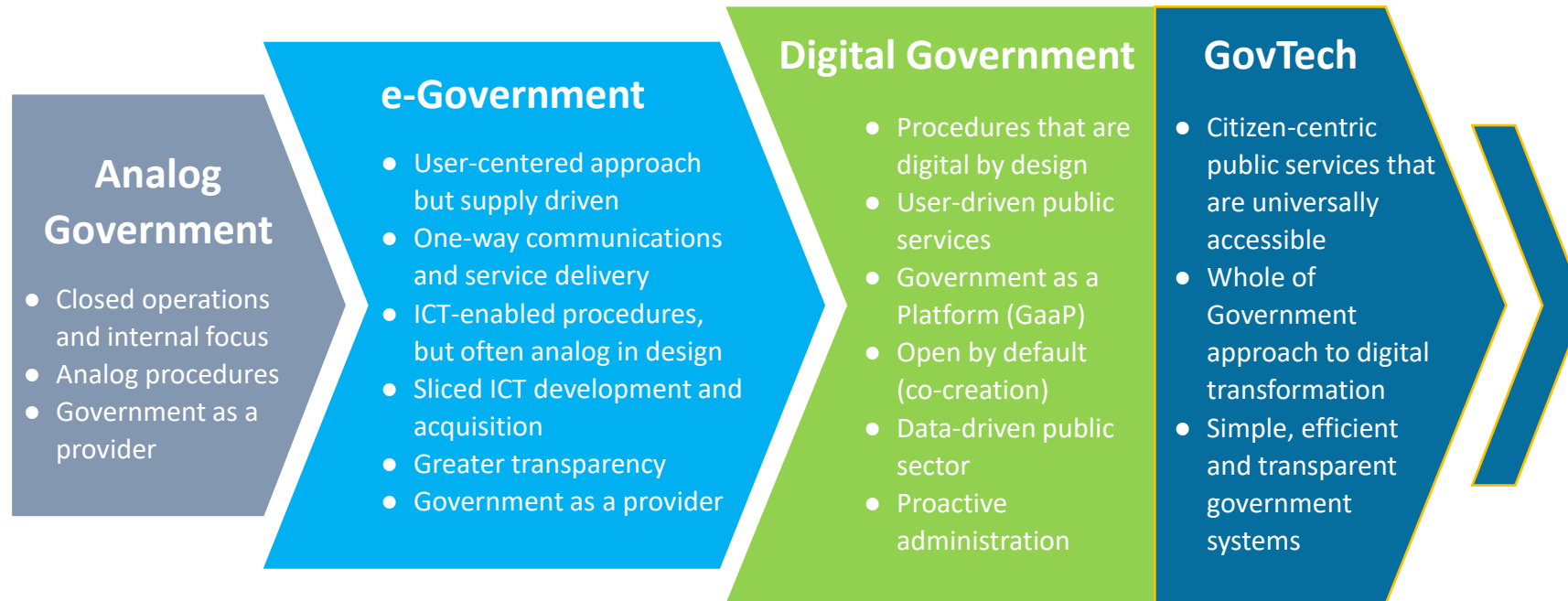
Simple and efficient government systems

The GovTech agenda also encompasses:

- Effective use of **disruptive technologies** (e.g., AI/ML, cloud, IoT),
- Public **data platforms** (promoting the use of public data by individuals and firms),
- Local **GovTech ecosystems** (supporting local entrepreneurs and start-ups), and
- Greater use of **public private partnerships** to draw upon private sector skills, innovations and investments to address public sector challenges.

What is GovTech?

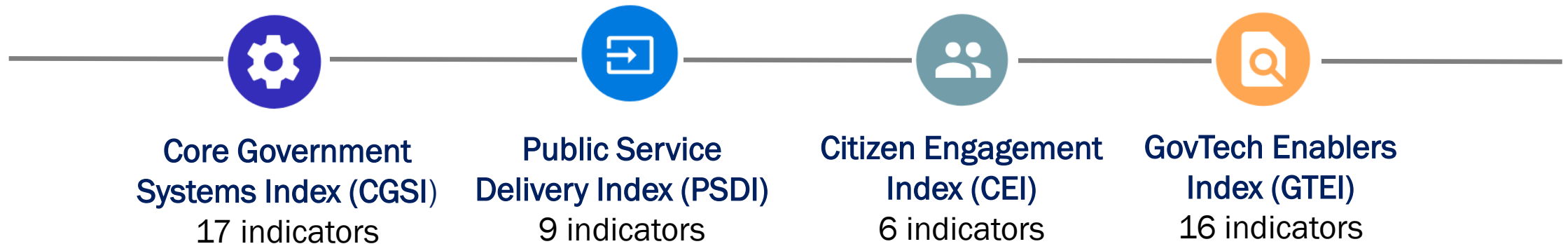
Digital transformation of the public sector can be seen as a continuum - GovTech is the latest generation of these reforms.



Source: World Bank; extending the OECD's presentation of digital transformation in Digital Government Studies (2019)

What is GovTech Maturity Index (GTMI)

The GovTech Maturity Index (GTMI) measures the state of four GovTech focus areas using 48 key indicators defined to collect data from 198 economies



The **target audience** of the *GovTech Maturity Index*:

Government officials, World Bank teams, and other practitioners involved in the delivery of GovTech solutions

2020 GTMI Results >>>

The construction of the GTMI is based on the WBG's [GovTech Dataset](#) that contains the evidence collected for 48 key indicators.

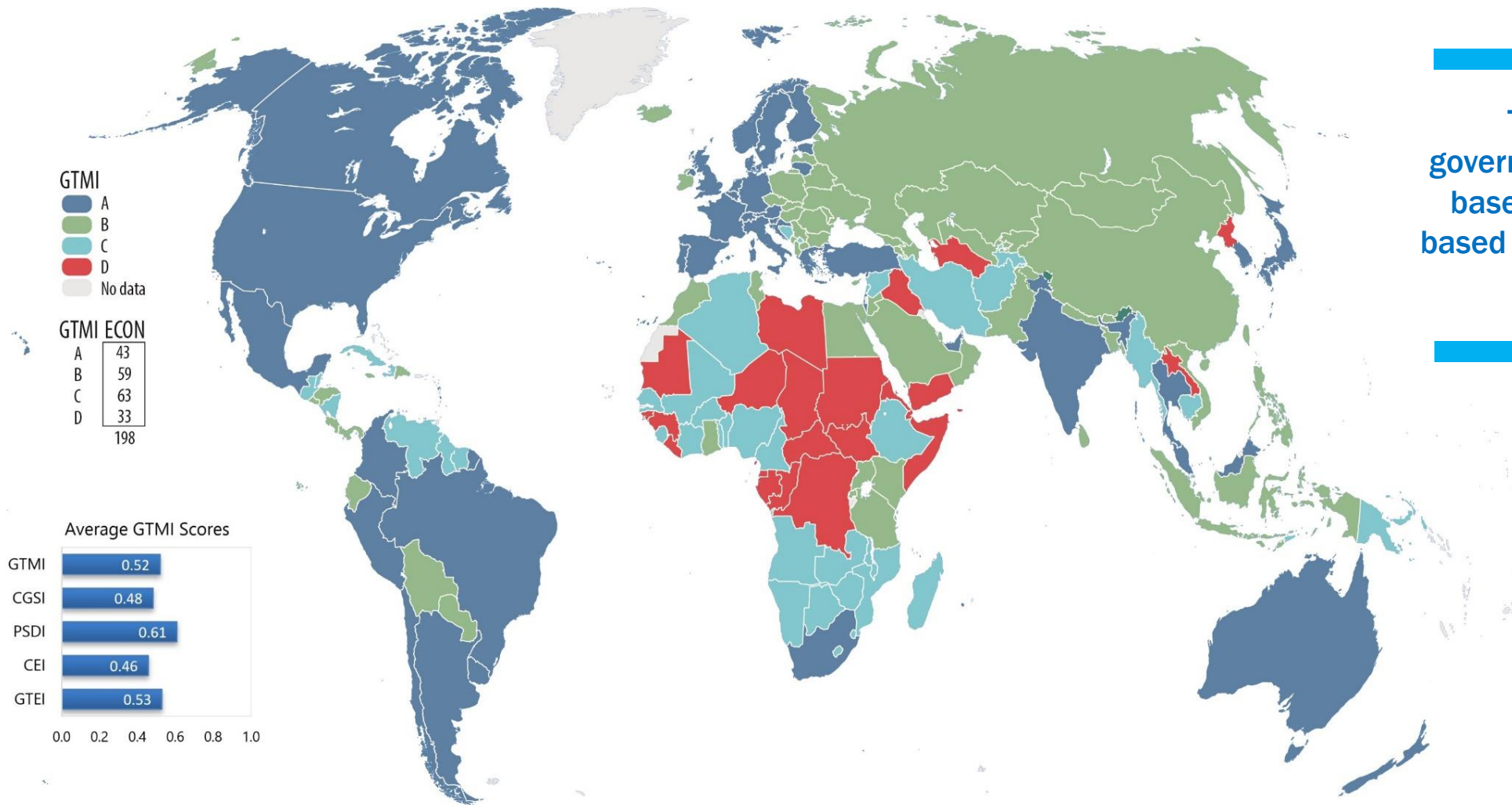
Based on the GTMI component scores that reflect the state of four GovTech focus areas, the 198 economies are grouped under four categories (A to D).

Group	GTMI	Economies in each Group	Economies %E	Regions %R
A	Very High 0.75 – 1.00	GovTech Leaders GovTech leaders demonstrating advanced/innovative solutions and good practices in all four foundational blocks.	43 21 %	23 14 %
B	High 0.50 – 0.74	Significant focus on GovTech Governments with significant GovTech investments and good practices in most of the foundational blocks.	59 30 %	56 33 %
C	Medium 0.25 – 0.49	Some focus on GovTech Governments with ongoing activities to improve some of the GovTech foundational blocks.	63 32 %	58 34 %
D	Low 0 – 0.24	Minimal focus on GovTech Governments with minimal focus on GovTech initiatives.	33 17 %	31 19 %
Totals			198	168

Source: World Bank data.

Note: The 198 “Economies” include all 188 of the World Bank member countries, plus some of the large economies (from European Union [EU], Organization for Economic Co-operation and Development [OECD], and Asia-Pacific Economic Co-operation [APEC] members). The “Regions” include 168 World Bank client countries that are receiving advisory and financial support to implement public sector modernization projects.

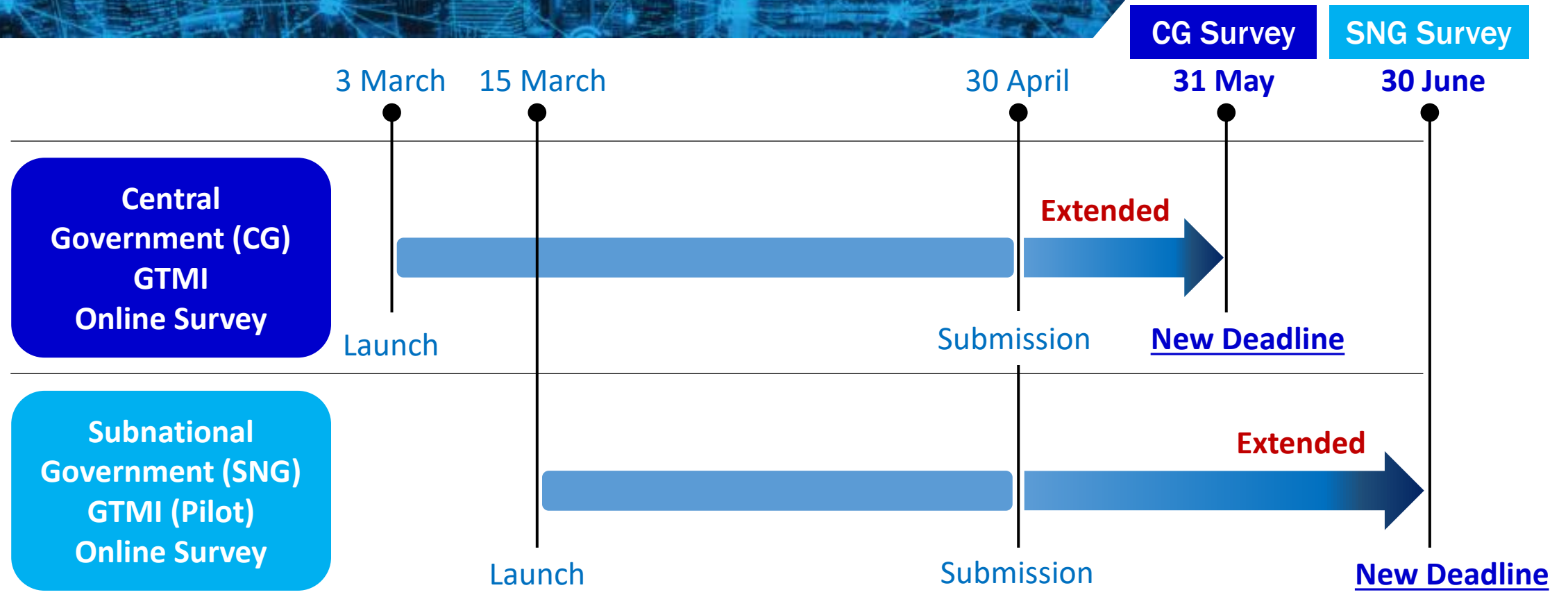
GTMI: International Outlook 2020



The maturity of digital government transformation based on the GTMI groups based on remotely collected data in 2020

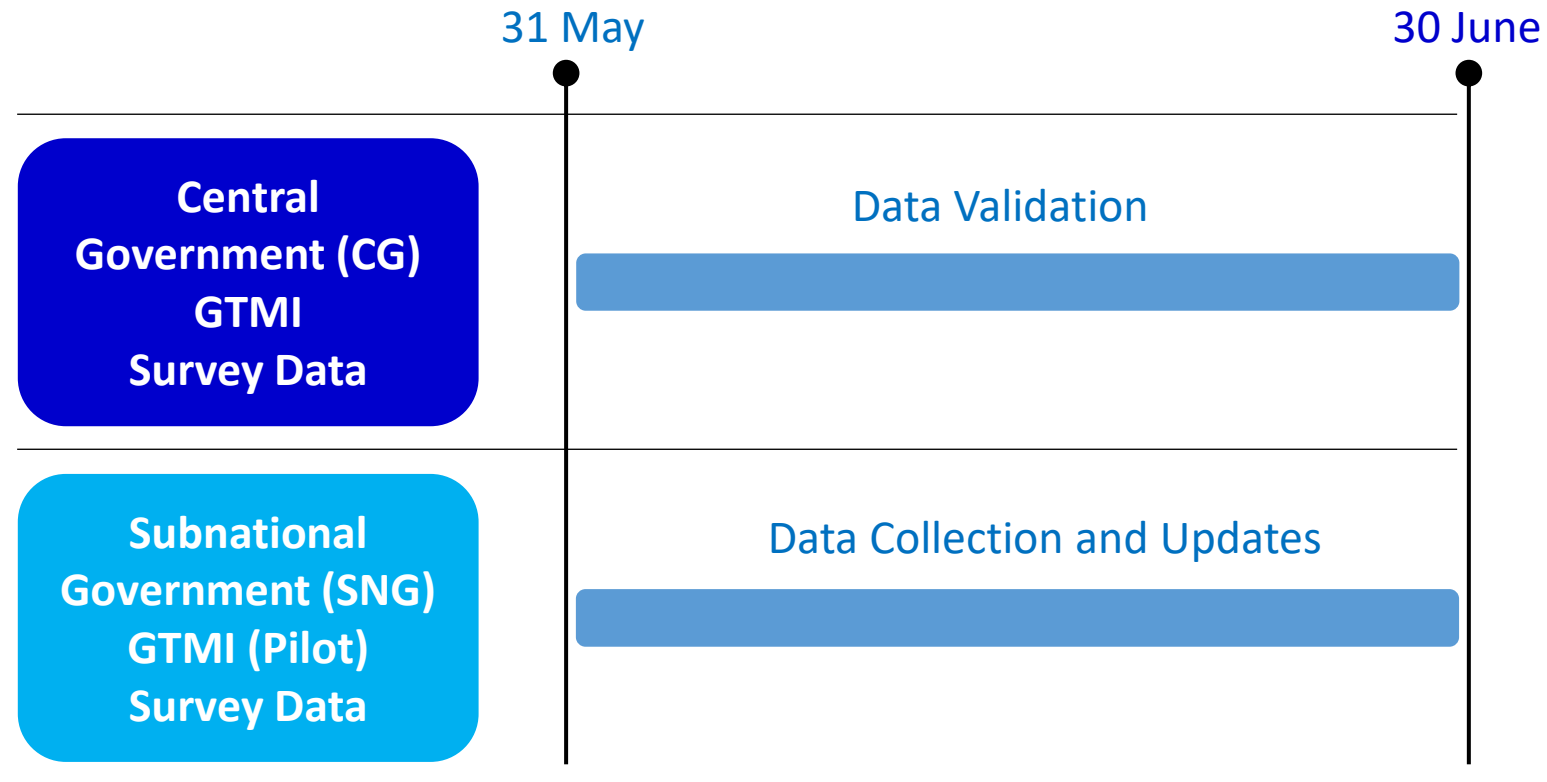
The GTMI 2022 update will be mainly based on the data provided by the country officials through online surveys

2022 GTMI Online Surveys: Timeline



- 840+ officials from 165 countries are involved in the **2022 GTMI Central Government (CG) Online Survey**.
- 140 countries submitted their 2022 survey updates.
- The GTMI team collected GTMI data remotely for the remaining 58 non-participating economies.

2022 GTMI Update: Timeline



- The GTMI Team will share the consolidated CG GTMI survey data with all participating officials for the validation of their responses and request clarifications, if needed, in June.
- Participating countries will have an opportunity to update their survey responses during data validation period, if needed.
- The CG and SNG survey data validation/collection will be completed by 30 June 2022.

Contributions

- The 2022 GovTech dataset presents the evidence collected on the maturity of four GovTech focus areas in 198 economies to assist practitioners in the design of new digital transformation initiatives.
- It also contributes to knowledge sharing and learning from other country experiences and good practices at the central and subnational levels.
- Additionally, a new data visualization platform will be launched to present the findings of the GTMI survey and 2022 GovTech dataset through GovTech web site.
- The 2022 GTMI update will also be used for the preparation of regional or country briefs to present the progress, gaps and possible improvements.
- The dataset will be updated every two years to reflect progress in the GovTech domain globally.

Q&A

- GovTech/GTMI web page: <https://www.worldbank.org/en/programs/govtech/gtmi>
- GTMI report: <https://openknowledge.worldbank.org/handle/10986/36233>
- GovTech dataset: <https://datacatalog.worldbank.org/search/dataset/0037889/GovTech-Dataset>