

The background features a top-down view of several hands holding small green basil plants. The image is overlaid with a dark blue gradient and several geometric shapes: a thick orange diagonal bar on the left, a thin yellow horizontal bar at the top right, and a thick blue diagonal bar on the right side. The text is white and positioned in the upper left quadrant.

# RETHINKING THE WORLD BANK GROUP COUNTRY ENGAGEMENT APPROACH

January 2025



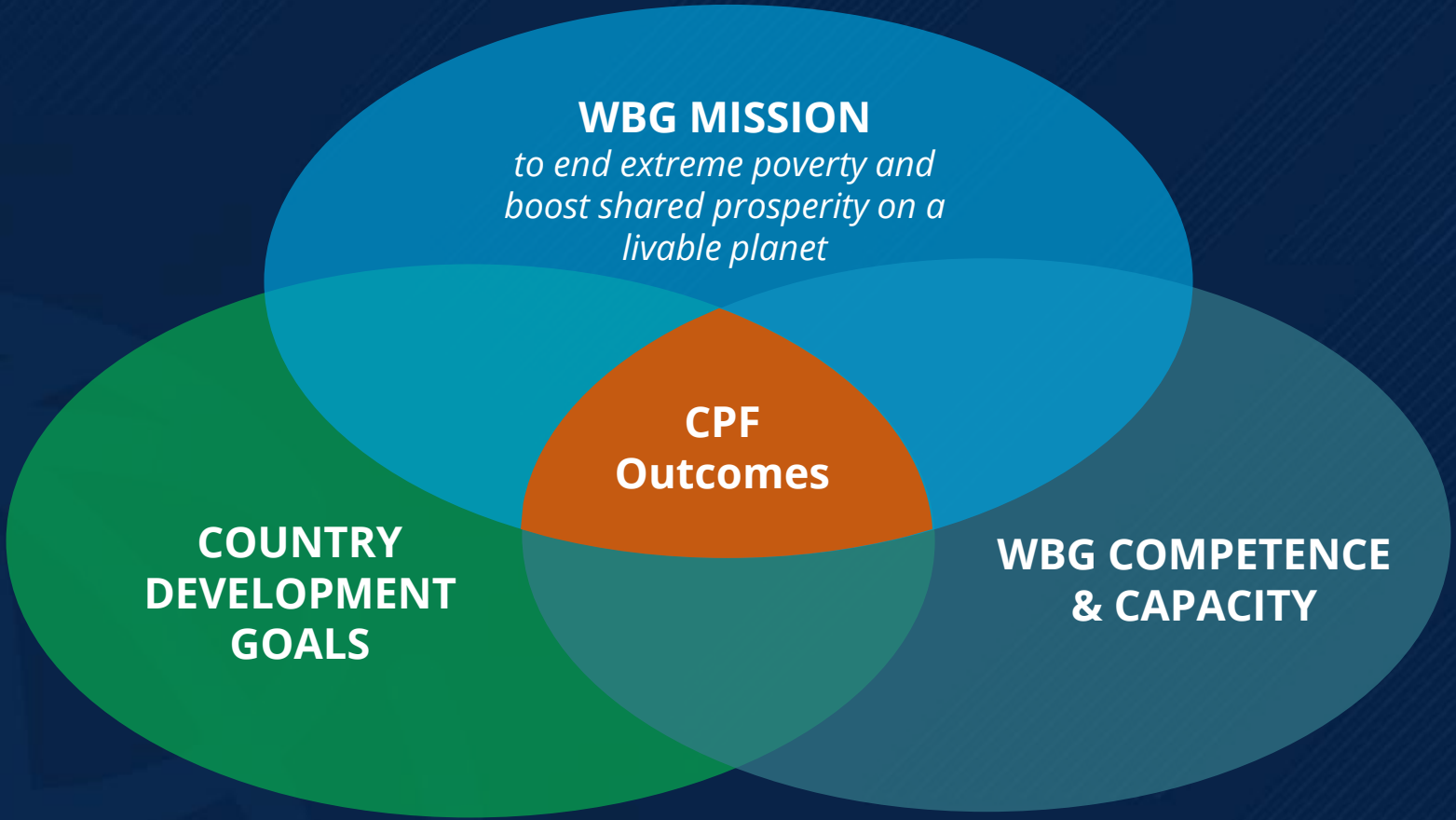
WORLD BANK GROUP



# Why rethink our **Country Engagement Approach?**

- To align it with the World Bank Group's new vision and mission
- To be more efficient, outcome-focused, and more systematic in tapping into private sector solutions wherever possible
- To prioritize country development goals and the WBG's new mission, while drawing on our strengthened comparative advantage and global expertise
- To ensure contestability, global knowledge is used systematically to inform program selection and improve implementation

# Strategic Alignment of Country Goals and WBG Mission





# Proposed Changes



Selectivity



Strategy &  
Implementation



Knowledge



Partnerships



One World  
Bank Group



Simplicity



# Selectivity

Delivering **impact**

## Focused CPF Outcomes

- Limited number of relevant country-level outcomes, based on country program size and/or needs
- Focus on contribution and attribution

## Simple Result Framework (RF)

- With fewer indicators closely linked to WBG Scorecard with flexibility where relevant
- Better capture of indirect pathways, including key reforms
- Informed by analytics, advisory, and operations



# Knowledge

The Knowledge Bank to the Forefront of CPFs

## Global & Regional Knowledge

Convening | Benchmarking | Evaluations | Lessons | Spillovers



Streamlined SCD



CPF design



CPF Implementation







# Public and Private Financing and Solutions

Working as **One World Bank Group** toward:



## Upstream Engagement

- Early engagement built on country diagnostics



## Joint Management & Evaluation

- Joint Annual Business Planning
- Joint evaluation of CPF program (CLR)



## Joint Programming

- More use of "joint" CPF Outcomes
- Joint country representation



## Learning & Tools

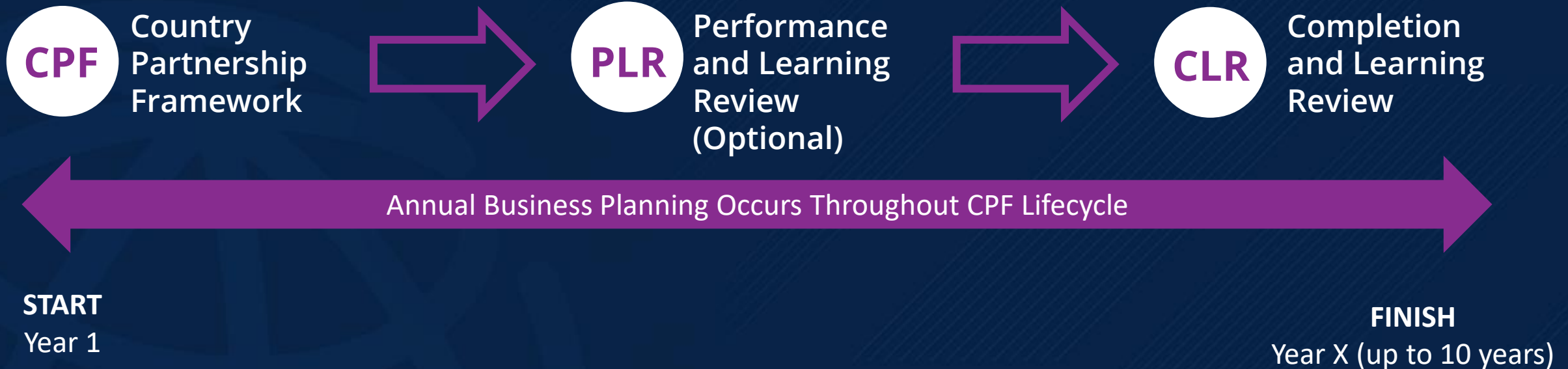
- Training on new country engagement approach and WBG instruments and financial solutions for clients



# Strategy & Implementation

## Towards a Dynamic CPF Cycle

Focused on Strategy and Implementation (for Business Planning Purposes)







# Partnerships

## Better Tools For Partnerships With Development Partners, Civil Society And Private Sector



### Knowledge Exchange

- Joint knowledge
- Joint capacity building
- Knowledge investment
- Benchmarking and learning from peer countries



### Modus of Engagement

- Working together
- Upstream engagement
- Downstream implementation



### Entry Points for Partnership

- Consultations during CPF preparation and implementation
- Country-led platforms and coordination groups
- Civil society, citizens, think tanks
- Leverage GCP approach in country
- Co-Financing Platform
- Deeper collaboration with MDBs, IMF and others



# Simplicity

## Efficiency and Effectiveness for Impact

### Systemic Country Diagnostic (SCD)

- Streamlined document, 10-page annex to the CPF
- Summarizes the key priorities the WBG sees for a country

### Country Partnership Framework (CPF)

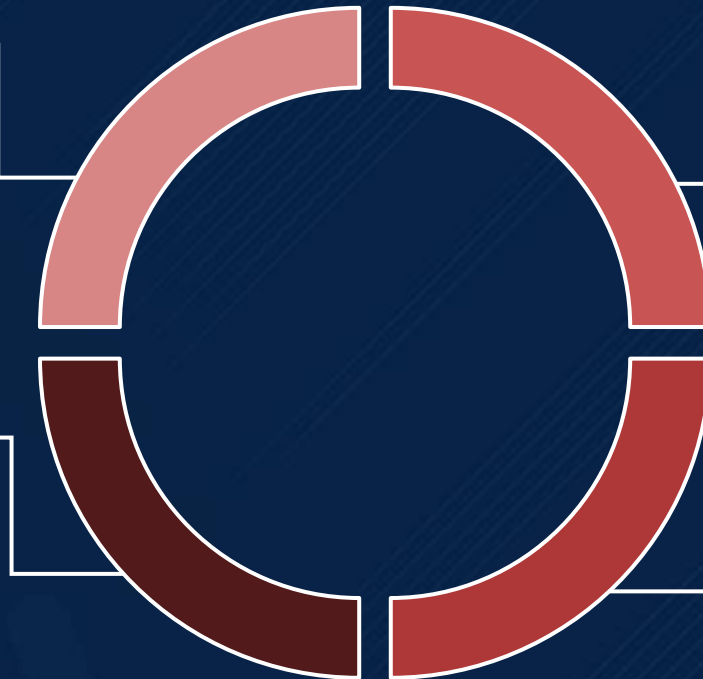
- Up to 10 years
- Simple Results Framework (RF)
- One CPF Format
- Shorter CPF document: (≈ 25 pages) for main text
- Expanded use of Regional Partnership Framework (RPF)

### Performance Learning Review (PLR)

- Optional and required only when significant changes in strategy and/or Results Framework
- Mandatory when CPF longer than 6 years

### Completion Learning Review (CLR)

- More emphasis on WBG performance incl. strength of partnerships
- New shared methodology with IEG (considering attribution and contribution)



# Country Example: Pakistan



## Selectivity



- 6 Outcomes
- 9 out of 10 indicators from WBG Scorecard

## Knowledge



Mobilized best-in-class knowledge:

- New “Data and M&E Lab”
- Insights from Indonesia stunting work
- Learning from China Air Quality experience
- Lessons from Brazil social protection

## One WBG



- Upstream engagement
- Joint Programming and Business Planning Process

## Strategy & Implementation



- New template anchors WBG activities over 18-24 months as basis for the business planning process during implementation
- Joint WB-IFC engagement plans in five priority sectors

## Partnerships



- Triple annual co-/parallel financing (World Bank)
- Leverage multi-donor platforms to support upstream and advisory engagements (IFC)
- Support foreign investment projects with regional development finance institutions and export credit agencies (MIGA)

## Simplicity



- 10 years CPF
- Simple, 12-page Results Framework (RF)
- 25 pages main text



# QUESTIONS FOR FEEDBACK & DISCUSSION?



**WORLD BANK GROUP**

-  Does the proposed approach effectively generate a selective and outcome-driven Country Partnership Framework (CPF)?
-  Does the proposed approach strike the right balance between global and local development challenges and needs?
-  Does the proposed move, towards fewer CPF indicators that align with the new WBG Scorecard, enable countries to focus on long-term development impact?
-  Does the proposed dynamic CPF lifecycle, that allows adaptive management and course corrections as needed and includes an annual business planning process, help countries better address emerging needs?
-  Does the proposed approach provide sufficient opportunities for engagement with external stakeholders- citizens, civil society, partners, private sector?
-  Does the proposed joint business planning and a stronger focus on partnerships ensure that public and private solutions are brought in to maximize development impact?
-  Are there any other comments that you would like to share on the new proposed approach?



# ANNEX



WORLD BANK GROUP



# Pakistan Results Framework

		PEOPLE	PLANET	PROSPERITY			
6 CPF OUTCOMES		#1 REDUCED CHILD STUNTING	#2 REDUCED LEARNING POVERTY	#3 INCREASED RESILIENCE TO CLIMATE CHANGE	#4 MORE DECARBONIZED ENVIRONMENT	#5 MORE PUBLIC RESOURCES FOR INCLUSIVE DEVELOPMENT	#6 INCREASED PRODUCTIVE PRIVATE INVESTMENT
2	No learning poverty		<input type="checkbox"/> MILLIONS OF STUDENTS SUPPORTED WITH BETTER EDUCATION [TARGET]				
3	Healthier lives	<input type="checkbox"/> MILLIONS OF PEOPLE RECEIVING QUALITY HEALTH, NUTRITION, AND POPULATION SERVICES [TARGET] <input type="radio"/> MILLION OF WOMEN USING MODERN CONTRACEPTIVES [TARGET]					
4	Effective macro economic and fiscal management					<input type="checkbox"/> TAX REVENUES-TO GDP CONSISTENTLY ABOVE 15% OVER 3 CONSECUTIVE YEARS -> ADJUSTED FROM SCORECARD	
5	Green and Blue Planet and Resilient Populations		<input type="checkbox"/> MILLIONS OF BENEFICIARIES WITH ENHANCED RESILIENCE TO CLIMATE RISKS [TARGET]	<input type="radio"/> REDUCTION IN ANNUAL AVERAGE AIR CONCENTRATION OF PARTICULATE MATTER IN TARGETED AREAS [TARGET]			
6	Inclusive and equitable water and sanitation services	<input type="checkbox"/> MILLIONS OF PEOPLE PROVIDED WITH WATER, SANITATION, AND/OR HYGIENE, OF WHICH (%) IS SAFELY MANAGED [TARGET]					
7	Sustainable Food Systems		<input type="checkbox"/> MILLIONS OF PEOPLE WITH STRENGTHENED FOOD AND NUTRITION SECURITY [TARGET]				
9	Affordable, Reliable and Sustainable Energy for All			<input type="checkbox"/> GW OF RENEWABLE ENERGY CAPACITY ENABLED [TARGET]			
15	More Private Investment						<input type="checkbox"/> \$ BILLIONS IN TOTAL PRIVATE CAPITAL MOBILIZED

SCORECARD OUTCOMES

WBG Scorecard indicator     Non-Scorecard indicator