

# Institutional Introduction



**Korea Forest Fire Management Service Association**



# Institutional Introduction

**PURPOSE** Education and training on forest fire prevention, research and investigation, international exchange on forest fire prevention technology and information, Performing the entrusted work of an administrative agency (since 2015)

한국산불방지기술협회는 산림보호법 제35조의2 규정에 의하여 산불방지에 관한 교육·훈련, 연구·조사, 기술 정보의 국제교류, 행정기관이 위탁하는 업무 등 산불방지기술 증진 및 정책 개발에 기여하기 위하여 2015년에 설립된 특수법인입니다.

**FEATURES** Forest Service Non-profit Corporation

**MEMBER** 331(2025.10.20.)

**STAFF** 50 (Executive 10, etc 40)

# Korea Forest Fire Management Service Association

Recognizing the importance of forest fire prevention, To help people to live up to their lives, Hub organization leading education on forest fire prevention manpower for efficient and effective protection

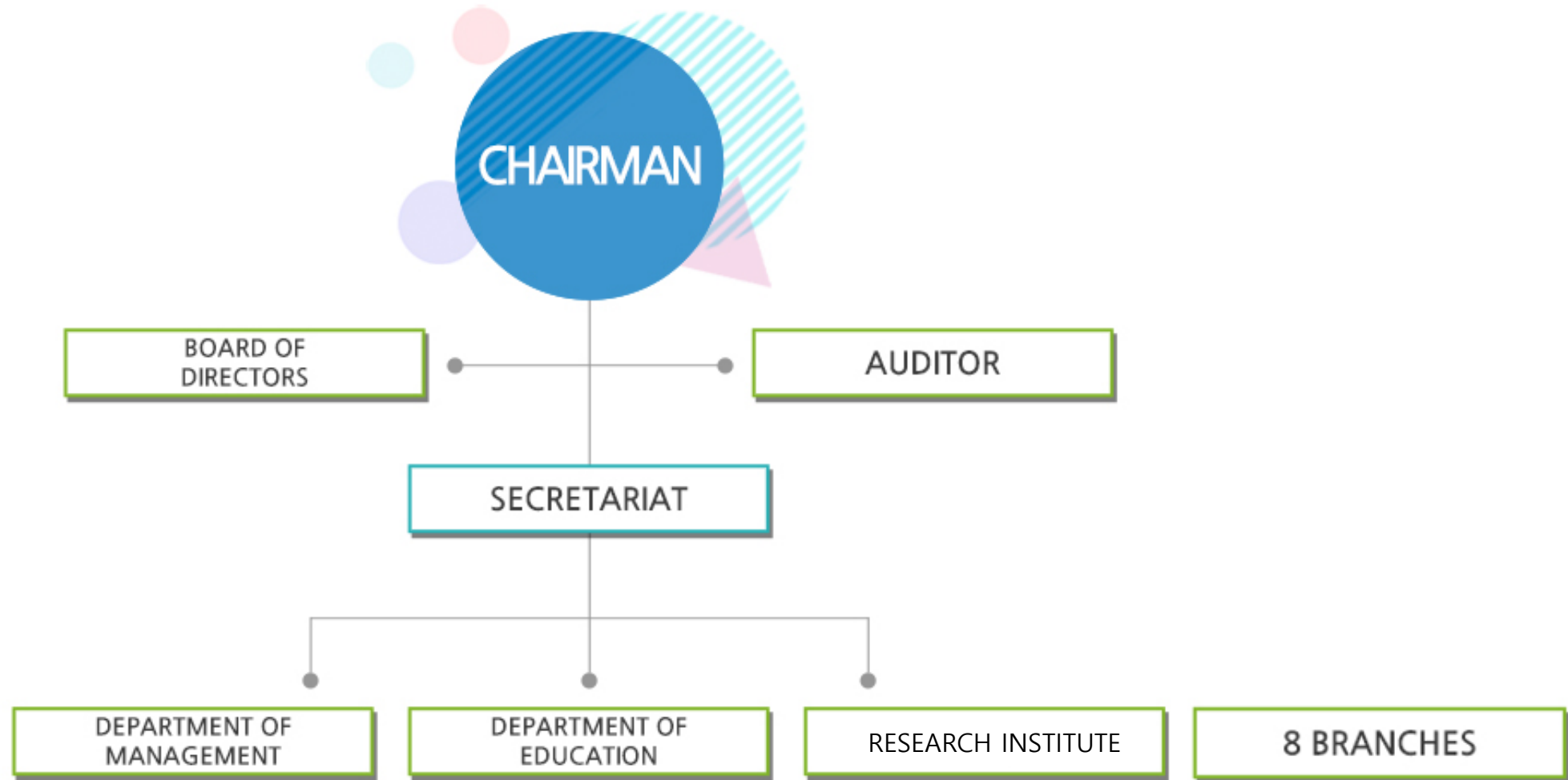
**VISION** Fostering as a key institution that will lead the training of human resources to prevent forest fires

- 산불방지 인력교육을 선도할 핵심 기관으로 육성
- 산불방지에 관한 연구·조사, 기술·정보 교류의 중심 역할

**MISSION** Strengthening capacity to support the implementation of forest fire policies and win-win development with local governments, etc

- 산불정책의 집행을 뒷받침할 수 있는 역량강화 및 지자체 등과 상생발전
- 산불방지교육 품질 향상과 연구·조사, 기술·정보 교류 확대

# Organization Chart



\*8 BRANCHES : GYEONGGI BRANCH, GANGWON BRANCH, CHUNGBUK BRANCH, CHUNGNAM BRANCH,  
JEONBUK BRANCH, JEONNAM BRANCH, GYEONGBUK BRANCH, GYEONGNAM BRANCH

# Location map

## Gyeonggi Branch

(경기·서울·인천)  
경기도 수원시 권선구  
당진로 20, 당수프라자 301호  
(16375) 070-8851-0612

## Chungnam Branch

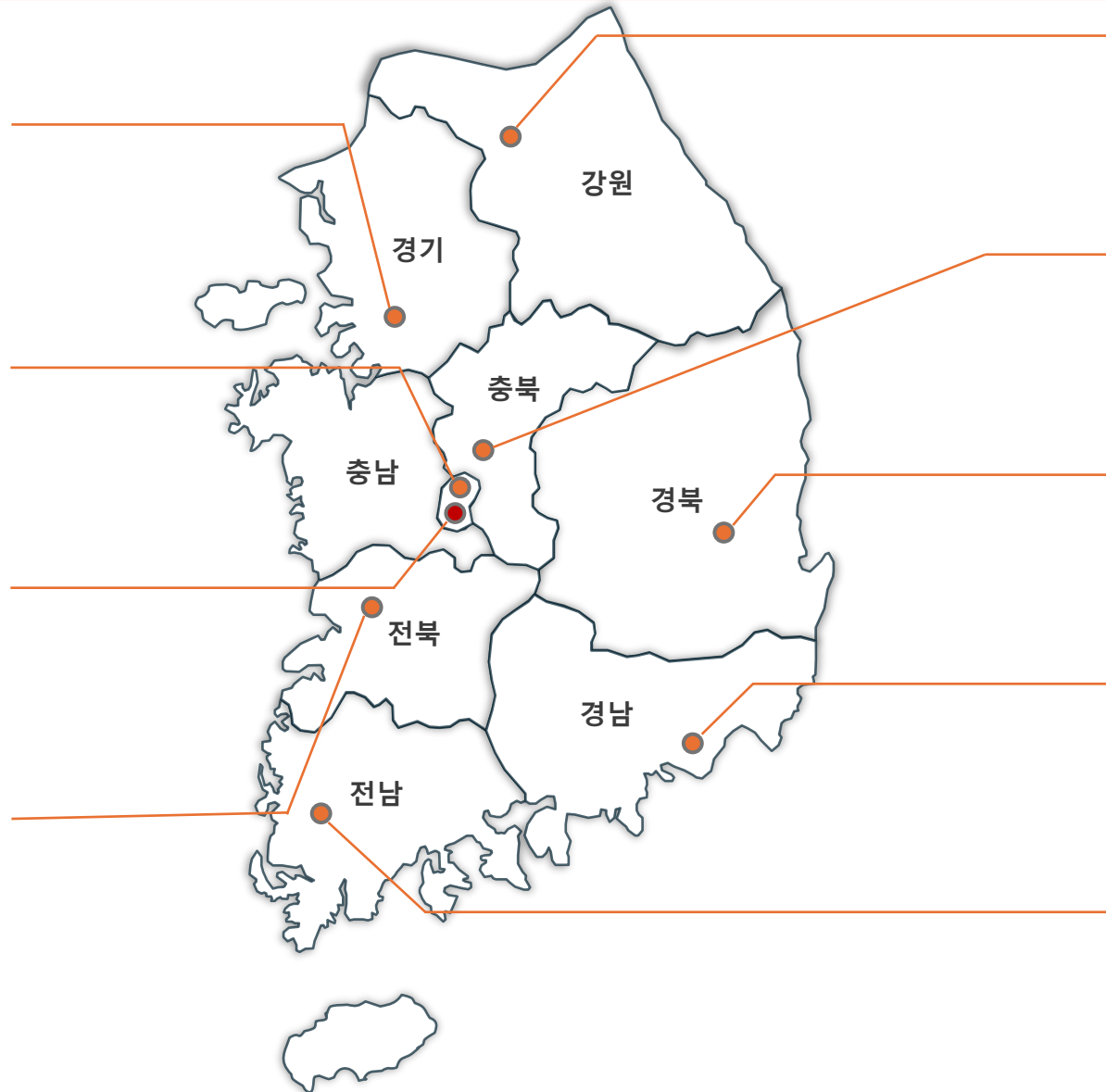
(충남·대전·세종)  
충청남도 공주시 한적2길  
28-3, 현대빌딩 401호  
(32577) 041-855-2829

## Main Branch

대전광역시 서구  
만년로68번길 45, 3층  
(35203) 042-822-9419

## Jeonbuk Branch

(전북)  
전북특별자치도 전주시  
덕진구 오공로 138, 303호  
(54873) 063-226-0550



## Gangwon Branch

(강원)  
강원특별자치도 춘천시 동면  
춘천순환로 498, 203호  
(24213) 070-7760-3119

## Chungbuk Branch

(충북)  
충청북도 청주시 상당구  
상당로 15, 4층  
(28531) 043-221-0339

## Gyeongbuk Branch

(경북·대구)  
경상북도 안동시 서후면  
학가산온천길 28, 2층  
(36616) 054-858-3119

## Gyeongnam Branch

(경남·부산·울산)  
경상남도 진주시 동부로169  
번길 12, 윈스타워 C동 202호  
(52818) 055-759-7122

## Jeonnam Branch

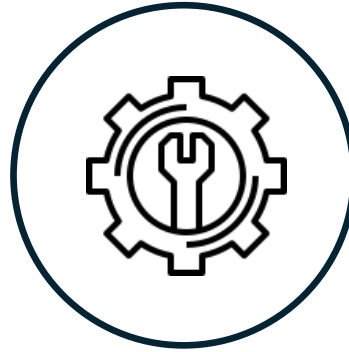
(전남·광주·제주)  
광주광역시 광산구  
비아로12번길 53, 201호  
(62237) 062-529-3110

# Major Undertaking



**1**

Forest Fire  
Prevention  
Education



**2**

Inspection of Forest Fire  
Extinguishing Facilities



**3**

Forest Fire Hazard  
Area Investigation



**4**

Forest Fire Investigation  
and Identification



**5**

International Exchange and  
Cooperation



# 1. ForestFire Prevention Education

## Forest Fire Prevention Education

### 1. Objective

- Strengthening the expertise of Forest Fire Fighting Resources and preventing safety accidents
- Raising citizens' awareness of forest fire prevention and instilling consciousness of forest fires
- 「산림보호법」제35조의5에 따라 산불방지 분야 전문인력의 양성과 국민의 산불방지 의식 함양과 지식을 얻을 수 있도록 하는 교육·훈련 업무로 동법 제35조 제2항에 따라 산림청 및 지자체의 위탁을 받아 실시

### 2. Subjects

- Fire Crew, Fire Guard, Soldiers, National Park Staff, Residents, Students, etc.

### 3. Education Contents

- Forest fire prevention and extinguishing knowledge
- Fire safety rules
- Forest fire extinguishing equipment operation and practice
- Responding to fires and reporting forest fires





# 1. Forest Fire Prevention Education





# 1. ForestFire Prevention Education



# 2. Inspection of Forestfire Extinguishing Facilities

## 1. Objective

- Carrying out periodic checks to ensure that the fire suppression instrument is in operation at all times

- 산불소화시설의 점검·보수를 통해 시설이 **상시 가동**될 수 있도록 하여 산불발생 시 **인명과 문화재** 등의 **주요 시설물 보호**

## 2. Main Contents



Preliminary Investigation



Periodic and Detailed Inspection



Urgent Inspection



Report Preparation

### (1) Inspection Candidates Selection

- Identifying the overall structure and checking each items by inspecting the exterior of the fire suppression instrument after the defect repair period

### (2) Periodic Inspection

- Artificially manipulate facility to check normal operation (once a month)

### (3) Detailed Inspection

- Detailed inspection of the main components of the facility, including operational function checks (twice a year)

### (4) Urgent Inspection

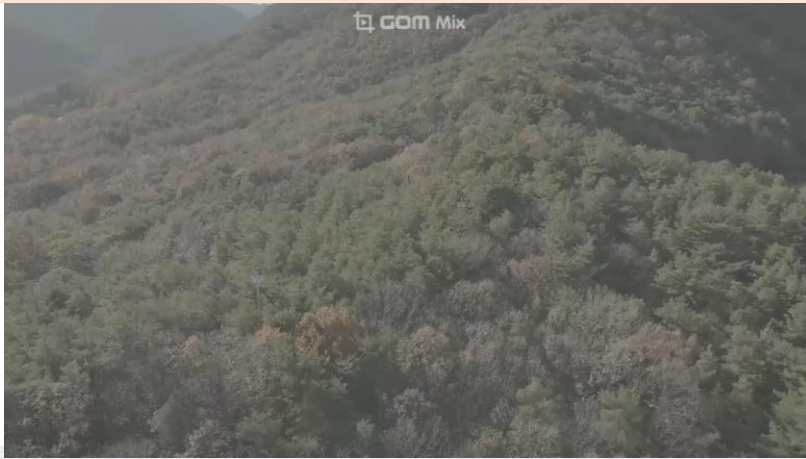
- Implement upon request from the head of operating agency

### (5) Report Preparation

- Report review opinions of the facilities with a picture attached to the relevant agencies after inspection



## 2. Inspection of Forest fire Extinguishing Facilities



**산불소화시설**

가압송수장치를 이용하여 수관수막설비 가동



**산불소화시설 점검**

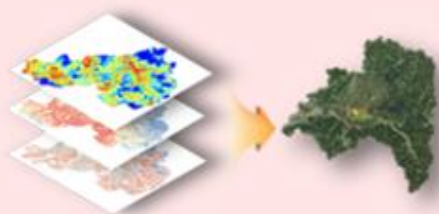
주요 시설을 장비 및 육안으로 직접 점검

# 3. Forest Fire Hazard Area Investigation

## 1. Objective

- Predict and proactively manage high forest fire risk areas to prevent wildfires
- Investigate areas with high risk of forest fires to provide regulation arrangements and rational management plans

## 2. Main Contents



### (1) Selecting investigation candidate areas

Selecting areas with high forest fire risk according to three types of three maps on forest fires



### (2) Preliminary Investigation

Establish sample zones (investigation zones) and conduct investigations on occurrence, spread, forest fire fighting and damage items.



### (3) Field Investigation

On-site investigation on 4 items of occurrence, spread, forest fire fighting and damage of selected areas



### (4) Report Preparation

Preparation of report on forest fire risk assessment record using advance and field survey data



산불위험지조사는 산불로 인하여 인명 및 시설물 피해가 우려되는 위험지역을 GIS분석 등 과학적으로 산불취약지역을 분석하고 조사하는 사업으로 산불예방을 위한 행정적·임학적·공학적 관리방안을 제안하여 산불을 예방하고 있습니다.

## 3. Expected Effect

- Providing useful information to determine forest fire prevention priorities by proactively identifying areas with high forest fire danger
- Providing information on surrounding risk factors and accessible roads in case of wildfires and providing decision factors in decision-making when deploying forest fire fighting resources



# 4. Forest Fire Investigation and Identification

## 1. Objective

- Scientifically identifying the cause of forest fires and systematically identifying the extent of damage
- Use as a basis for forest fire prevention policies

산불피해지조사는 산불 발생 원인을 과학적으로 규명하고 피해 규모를 체계적으로 파악하기 위한 핵심 사업으로, 발화지점 확인, 피해범위 분석, 확산 경로 추적 등 조사 활동을 통해 정확한 결과를 도출하고 산불 예방정책 근거자료로 활용하고 있습니다.

## 2. Main Contents

- Scientific Forest fire Investigation
- Accurate damage analysis and database construction
- Operation of professional investigators



**경남 산청 산불**

3월 21일 시천면에서 발화해  
약 213시간 만에 주불이 잡혔으며,  
2025년 첫 대형 산불



**경북 의성 산불**

3월 22일 안평면에서 성묘 중 실화로  
시작되어 경북 북부 전역으로 급속  
확산된 기록적인 초대형 산불



**울산 울주 온양 산불**

3월 22일 오후 한 야산에서 발생해  
헬기 및 차량 등 대규모 진화 투입,  
약 128시간 만에 주불 진압된 산불



**울산 울주 언양 산불**

3월 25일 송대리 인근에서 발생해  
강풍과 건조한 날씨 속에 빠르게  
확산되며 '산불 2단계' 발령된 산불

# 4. Forest Fire Investigation and Identification

V / U pattern





# 4. Forest Fire Investigation and Identification

Case Study (25.3.25, electrical factor)





# 4. Forest Fire Investigation and Identification

Case Study (22.2.15, electrical factor)





# 4. Forest Fire Investigation and Identification

Case Study (23.2.2, arson)





# 4. Forest Fire Investigation and Identification

## Case Study (lightning strike)





# 5. International Exchange and Cooperation

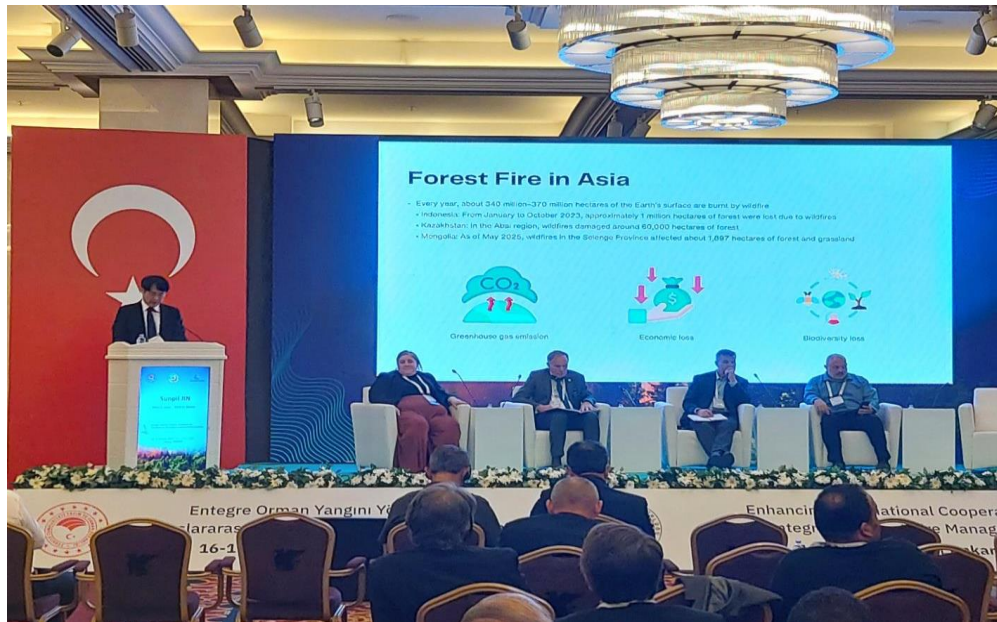
## 1. Turkiye (2025.6.14 – 6.19)

- Integrated fire management leadership (IFM)
- National exchanges on fire management and long-term cooperation on fire management through global experts

주제: 통합 화재관리 리더십 강화

목적: 화재관리에 대한 국가단위 교류 및 글로벌 전문가를 통한 산불관리에 대한 장기 협력

참가국: 튀르키예 등 12개국



Forest Fire Management in Korea



Turkiye Forest Service

# 5. International Exchange and Cooperation

## 1. Kazakhstan (2025.8.16 – 8.31)

- Through cooperation with Kazakhstan's Ministry of Ecology and Natural Resources and France's Ministry of European Foreign Affairs, cooperation between regions is strengthened and the participating countries' ability to extinguish forest fires is promoted

주제: 건조산악지역 산불 진화

목적: 아시아협력국 회원국들에게 대한민국과 프랑스의 산불진화 기술과 경험을 공유

참가국: 카자흐스탄 등 6개국



Korea's Wildfire Investigation Identification



Prescribed burn practice





**THANK YOU**