

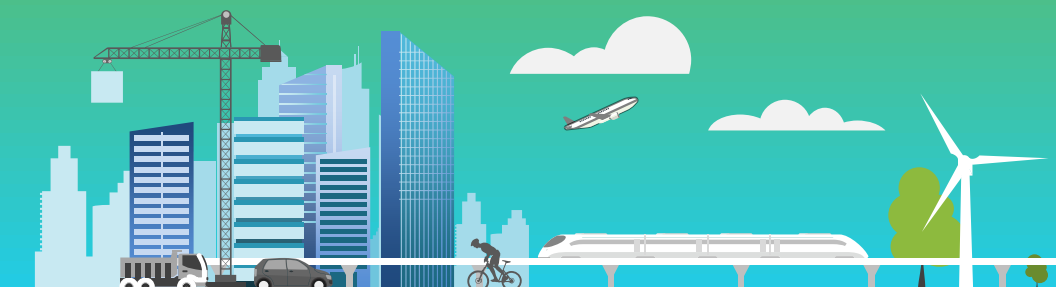


**SURGE**  
Sustainable Urban and  
Regional Development



# Surging Cities


A Global Umbrella Partnership for  
Sustainable & Inclusive Development



**SURGE**  
Sustainable Urban and  
Regional Development



**WORLD BANK GROUP**

 Schweizerische Eidgenossenschaft  
Confédération suisse  
Confederazione Svizzera  
Confederaziun svizra  
Swiss Confederation

Federal Department of Economic Affairs,  
Education and Research EAER  
State Secretariat for Economic Affairs SECO

Since 1948  
 **75**  
AUSTRIA YEARS 



Ministry of Land,  
Infrastructure and Transport

# About the SURGE Umbrella Program

The World Bank established the global **Sustainable Urban and Regional Development (SURGE) Umbrella Program** in 2020 as its central collaboration instrument for working with partners on building inclusive, resilient, and sustainable cities in developing countries.

Cities and their regional areas are on the frontlines of combating multiple crises. Pandemics, climate change impacts, natural disasters, economic downturns, and violent crimes all concentrate in urban areas. At the same time, cities are economic regional powerhouses which offer people opportunities for greater wellbeing. Aspiring better lives, people keep moving to cities. **By 2050, nearly 7 of 10 people globally are expected to live in urban areas.**

To accrue the benefits of urbanization and avoid negative social, economic, and environmental outcomes, governments must plan and manage this demographic shift wisely. Many developing countries, however, could benefit from increased capacity to plan for sustainable and inclusive city development.

SURGE's overarching **development objective is to enable cities and regions in developing countries to function as drivers of green, resilient and inclusive economic development.**

SURGE tracks progress towards achieving its development objective by monitoring progress on more than 40 results indicators alongside its results. Early results show that SURGE strengthens capacity and creates knowledge that help city leaders and stakeholders in their urban policy and investment decision-making.

Activities financed by SURGE support governments of developing countries at different levels to help them **strengthen and prioritize their investment portfolios.** The program also supports **mobilization of additional resources.** SURGE is a flexible program and is open to discuss geographic and thematic priorities of its current and new development partners.

---

**The World Bank invites development partners to join SURGE and together work towards sustainable & inclusive urban & regional development globally.**

---

## 4 ACTIVITY LINES

SURGE supports four type of activities across five thematic pillars



### Knowledge Creation & Innovation

Creating a knowledge base of best practices and proven policies for national and local policymakers to help them address urbanization challenges and accrue the benefits of agglomeration.



### Capacity Building & Training

Assisting development countries in building their capacity to formulate policies and strategies aimed at improving sustainable urban and regional development.



### Supporting Finance Mobilization

Assisting national and local governments in building their capacity to carry out finance mobilization and finance diversification for investment projects to support sustainable urban and regional development.



### Stakeholder Collaboration & Knowledge Sharing

Establishing and facilitating stakeholder collaborations to promote synergies and share knowledge with other players at global, regional and national levels for green, resilient and inclusive cities.

## 5 PILLARS

across five thematic pillars

### City Management, Governance, & Financing

Strengthening the financial and institutional dimensions of urban and regional development and management in developing countries.



### Territorial & Spatial Development

Supporting the adoption of spatial and territorial dimensions to spur local and regional development and growth.



### Sustainable & Climate-Smart Cities

Promoting low-carbon, climate-smart urban development by fostering innovation and technical excellence.



### Urban Poverty & Housing

Fostering more inclusive urban areas and to improve living conditions of the urban poor, including for the forcibly displaced people in urban centers.



### Urban & Regional Resilience

Strengthening cities and regions' resilience to climate change and disasters



# SURGE Programs

SURGE is supported by the **Swiss State Secretariat for Economic Affairs (SECO)** as its founding donor, as well as **Austria's Ministry of Finance**, and **Korean Ministry of Land, Infrastructure and Transport (MOLIT)**. SURGE is housed within the World Bank's Urban, Disaster Risk Management, Resilience and Land Global Practice (GPURL).

**Currently, SURGE comprises six Trust Funds:** the global anchor Trust Fund contributing to sustainable urban and regional development globally, and five associated country trust funds. Its combined budget is close to US\$50 million.

SURGE's Global Programs helps cities become more competitive and sustainable in **Angola, Costa Rica, Madagascar, Nepal, Nigeria, Philippines, Romania, Uzbekistan, Vietnam, Middle East and North Africa Region**, and more.

SURGE's five associated country trust funds support sustainable, inclusive and resilient urban development in **Serbia, South Africa, Bolivia, Indonesia and Peru** – see below.



JOIN US

[www.worldbank.org/surge](http://www.worldbank.org/surge)

@WBG\_Cities

[www.worldbank.org/en/topic/urbandevelopment](http://www.worldbank.org/en/topic/urbandevelopment)