

Investment Prioritization Tool (IPT) for Sustainable Land Management

Recap, overview, and progress to date

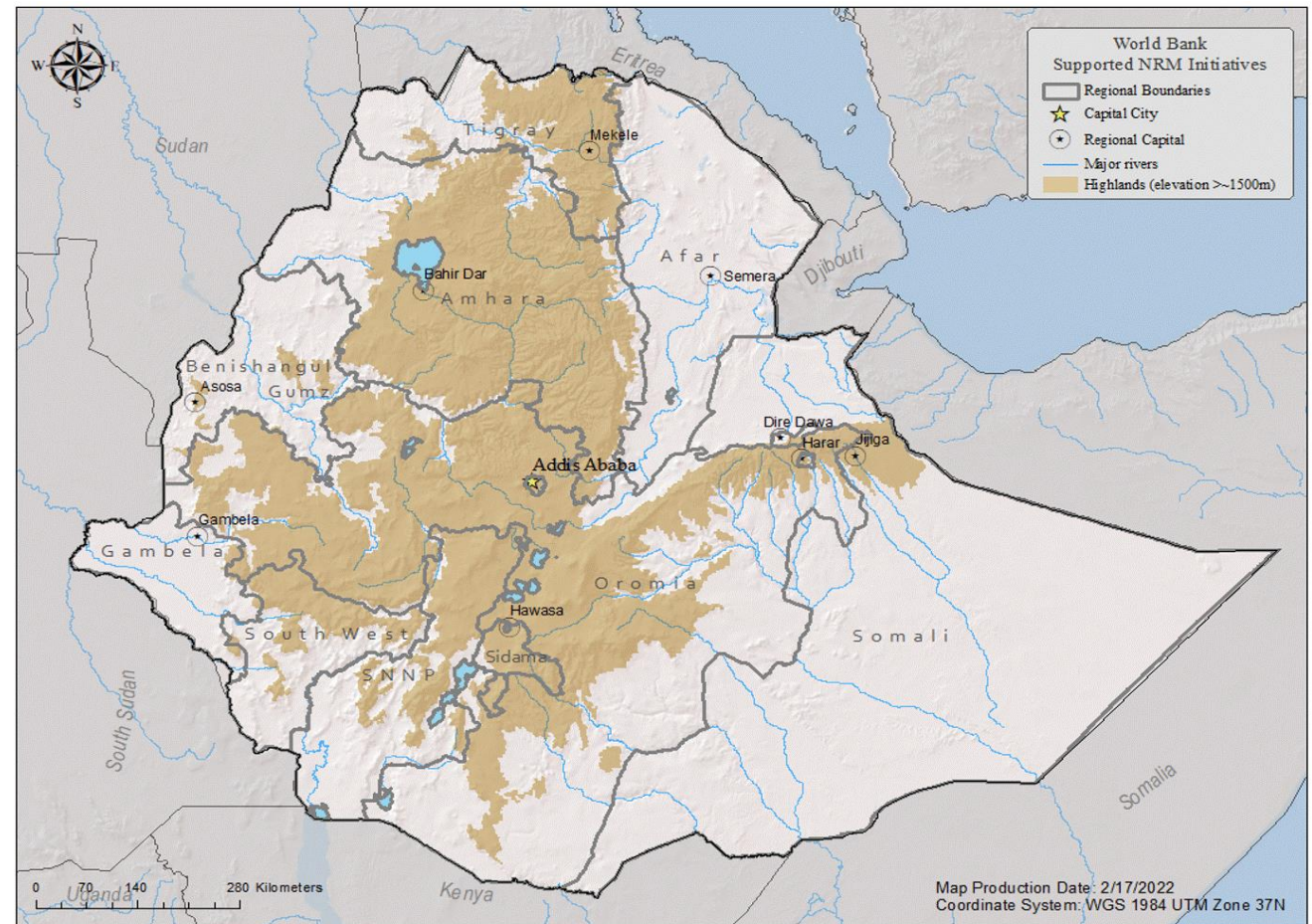


Jorge Leon
Adrian L. Vogl, Lingling Liu, Evariste Rutebuka
Technical Workshop on Investment Prioritization Tool

1 November 2023

World Bank Support for Sustainable Land Management

- Land degradation affects millions and reduces resilience to climate change.
- Half of highlands significantly degraded.
- World Bank SLM support: US\$900 million of ongoing investments in SLM; covers around 8000 community watersheds.
- Lack of attention has been paid to quantifying the impacts of SLM investments on ecosystem services or to **prioritizing investments to optimize impacts on ecosystem services.**



Objectives of the Investment Prioritization Tool (IPT)

The Investment Prioritization Tool (IPT) **combines data on land cover, land condition, climate, soils, and infrastructure, along with state-of-the-art spatial modeling approaches** to:

- Evaluate **impacts on ecosystem services from ongoing degradation trends** (the business-as-usual scenario);
- Assess the potential **benefits of land restoration and sustainable land management technologies** in terms of ecosystem services improvements;
- Use this information to **identify priority areas for implementation** of land management interventions; and
- Use this information to identify priority areas and criteria for inclusion in the **update of the Ethiopia Strategic Investment Framework (ESIF2)**.

Composition of the IPT Technical Working Group (TWG)

Ministry of Agriculture (MoA)

Ministry of Finance (MoF)-CRGE strategy

Ethiopian Biodiversity Institute (EBI)

Ethiopia Space Science and Geospatial Technology Institute (SSGI)

Environmental Protection Authority (EPA)

Ethiopian Forestry Development (EFD)

Ethiopian Institute of Agricultural Research (EIAR)

Addis Ababa University (AAU)

World Resources Institute (WRI)

Water and Land Resource Center (WLRC) at AAU

Ministry of Irrigation and Lowlands (MoIL)

National Metrological Institute (NMI)

Ethiopian Statistical Services (ESS)

Consultation on IPT

GoE requests support on Natural Capital and investment prioritization

Launch mission and capacity building workshop Sept 2022

Virtual capacity building workshop Dec 2022

First TWG meeting, Apr 2023

Validation workshop, Oct 2023

Final inputs to ESIF update, Dec 2023

Government Focal Point:



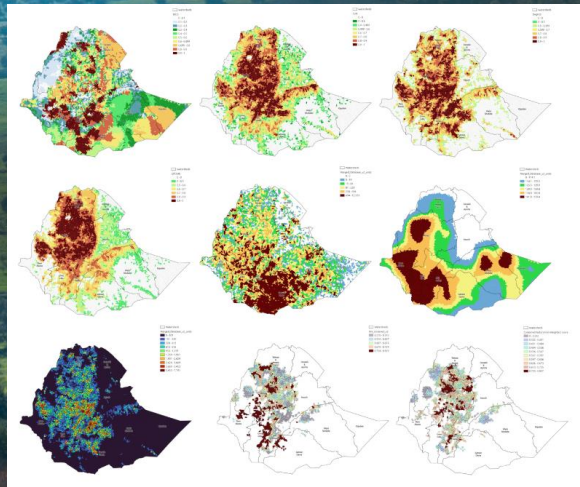
Min of Agriculture



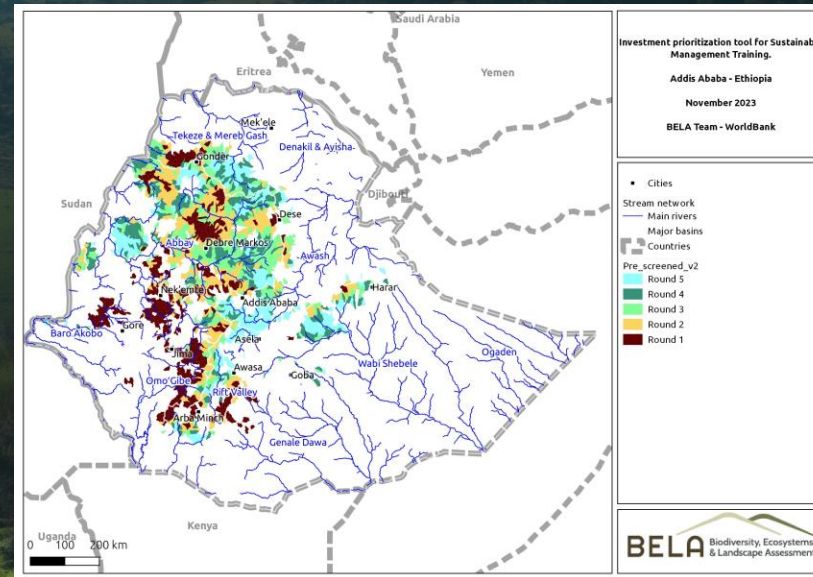
What is the IPT?

A set of input data, modeling results, and a database of criteria at the micro-watershed level that allows for sorting, prioritization, and selection of key areas for SLM investments.

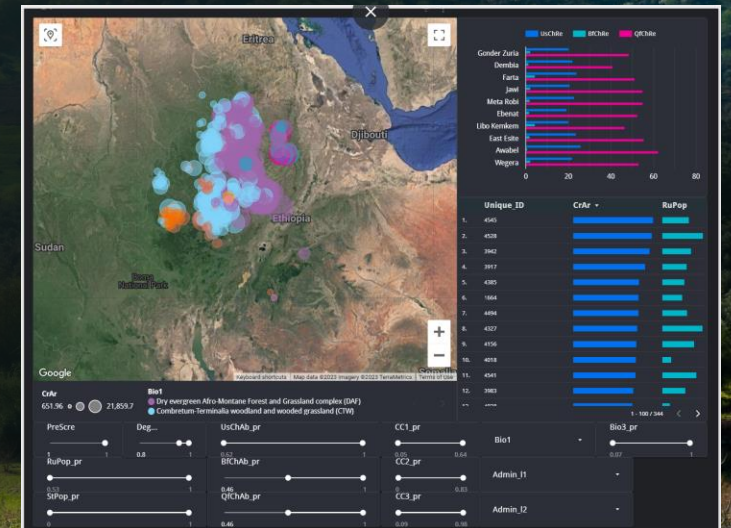
What is the IPT?



GIS Database

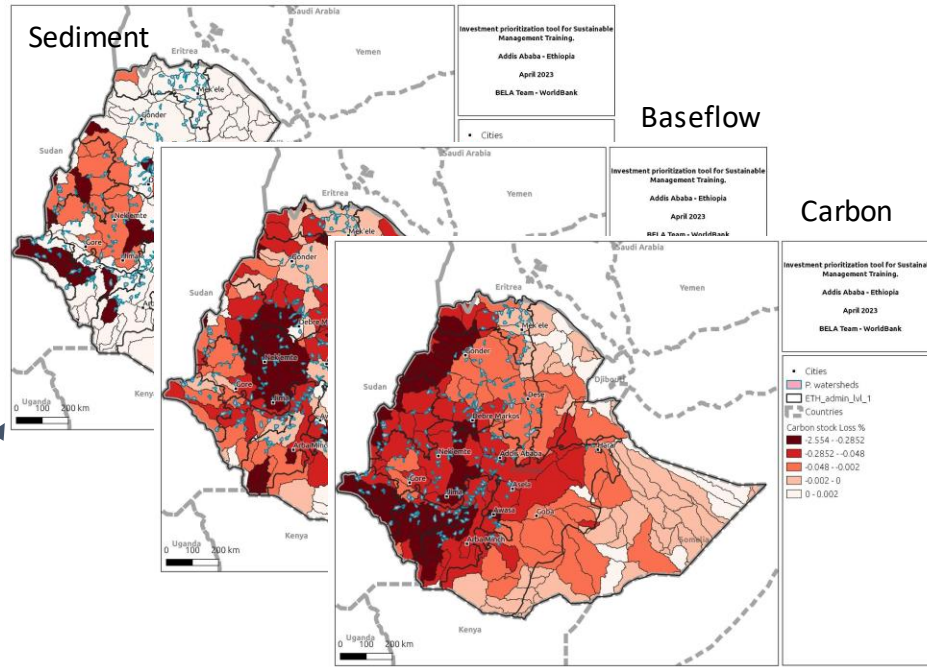


Recommendation on priority watersheds



Tabular Database

Business-as usual loss in services

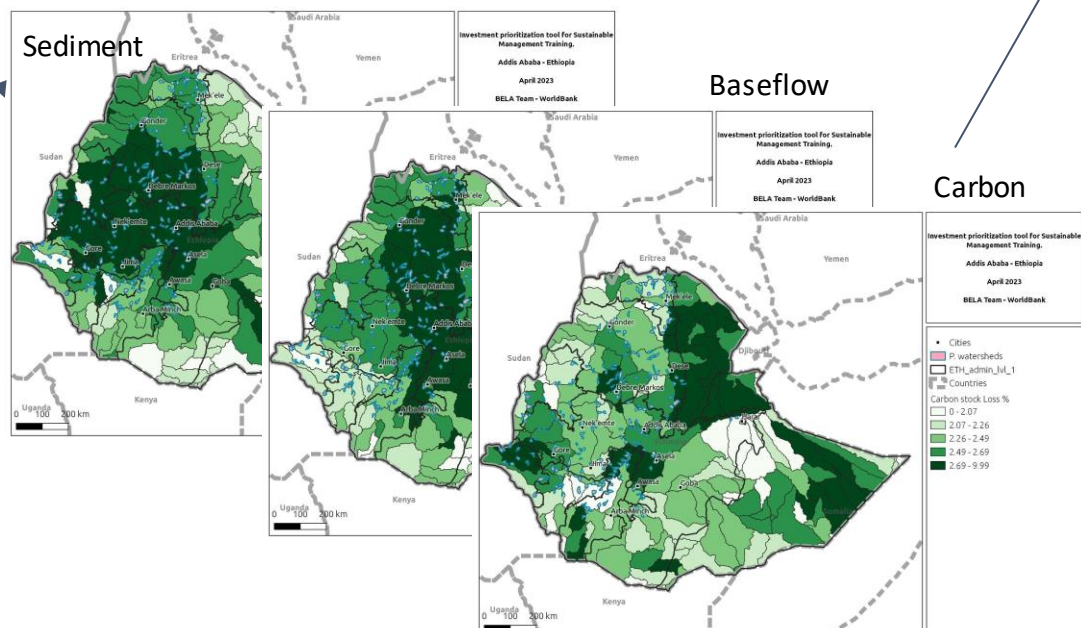


Other criteria

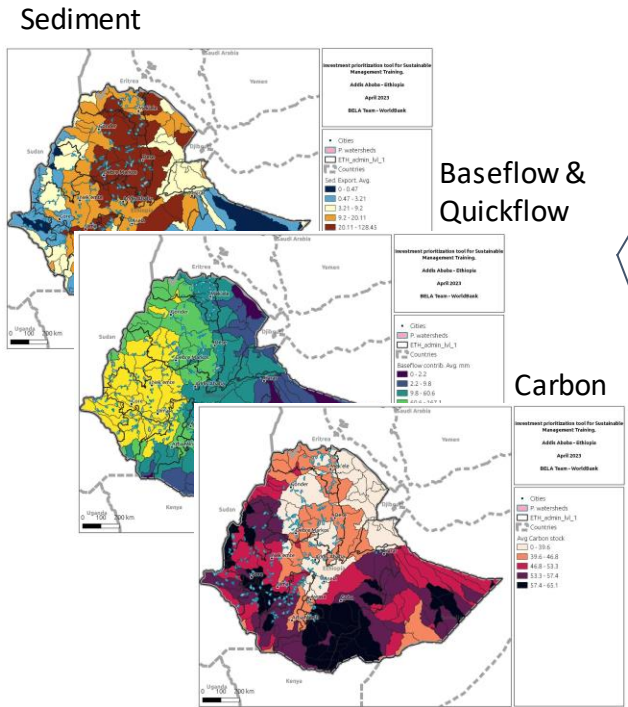
- Degradation
- Climate risk
- Biodiversity
- Beneficiaries
- Exclusion criteria

Priority investment areas

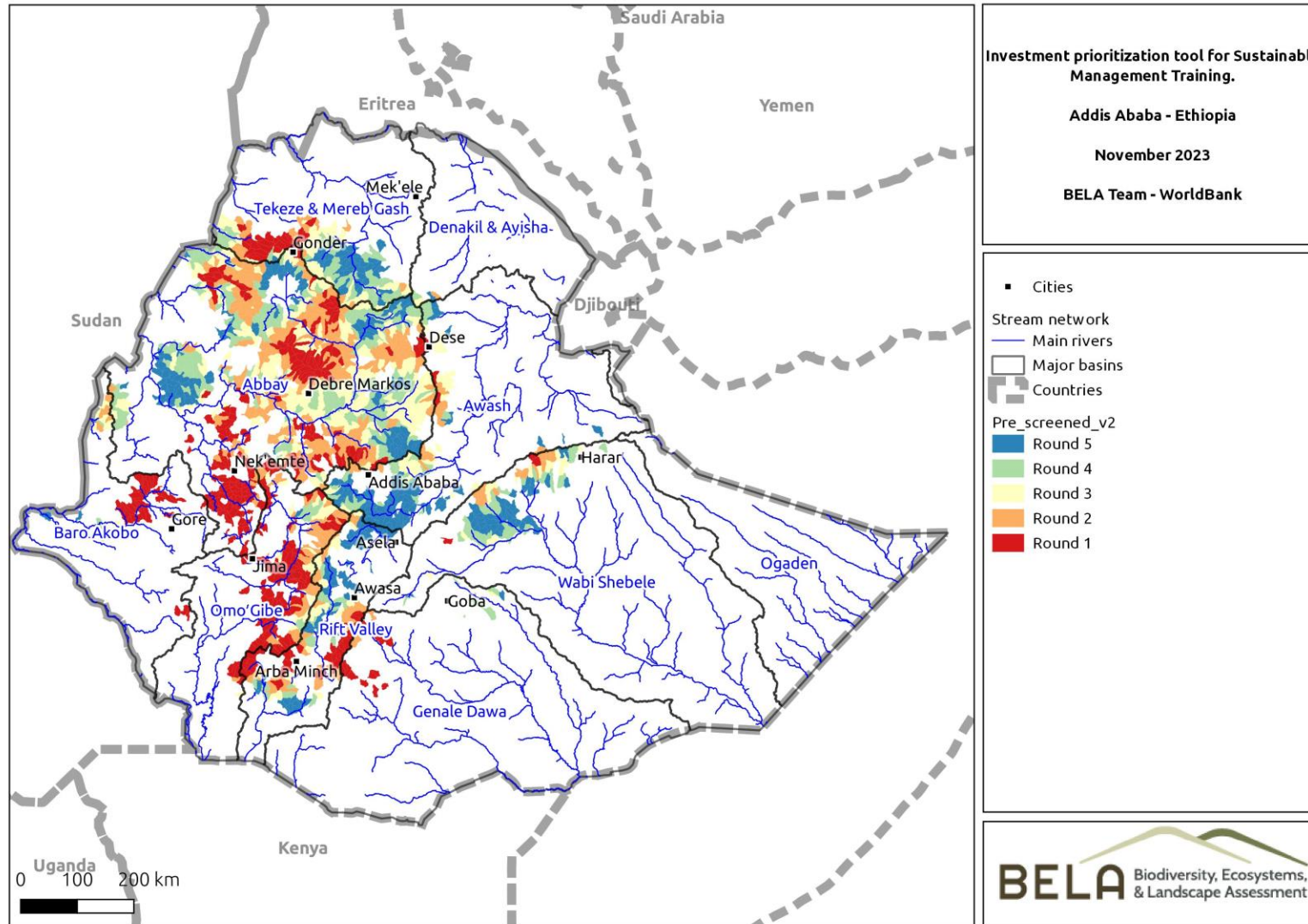
Improvement in services with SLM



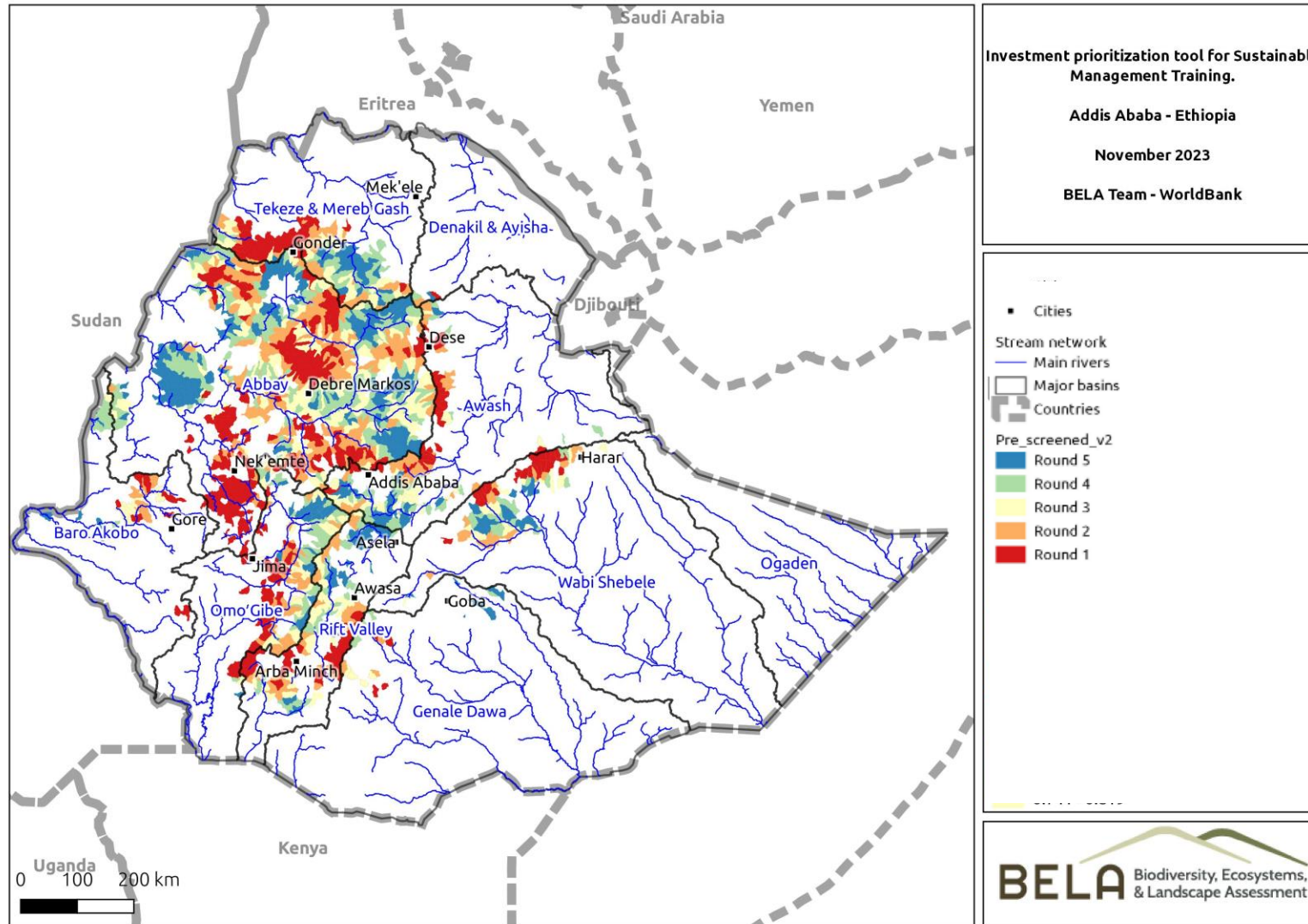
BASELINE



Recommendation of Priority Watersheds Based on E.S. Returns WATERSHEDS outlook



Recommendation of Priority Watersheds Based on E.S. Returns PER BASIN outlook



• Expected Outcomes for this Workshop:

- Validation of Approach and Data Used - Missing
- Identification of Key Data missing (e.g. monitoring data)
- Further customization of the tool to better serve the regions needs and available data (Go Hi-Res in priority regions)
- In Deep Training of Technical Staff in ETH who might appropriate and improve this tool further.

Thank you

For more Information contact:

avogl@worldbank.org

JleonSarmiento@worldbank.org