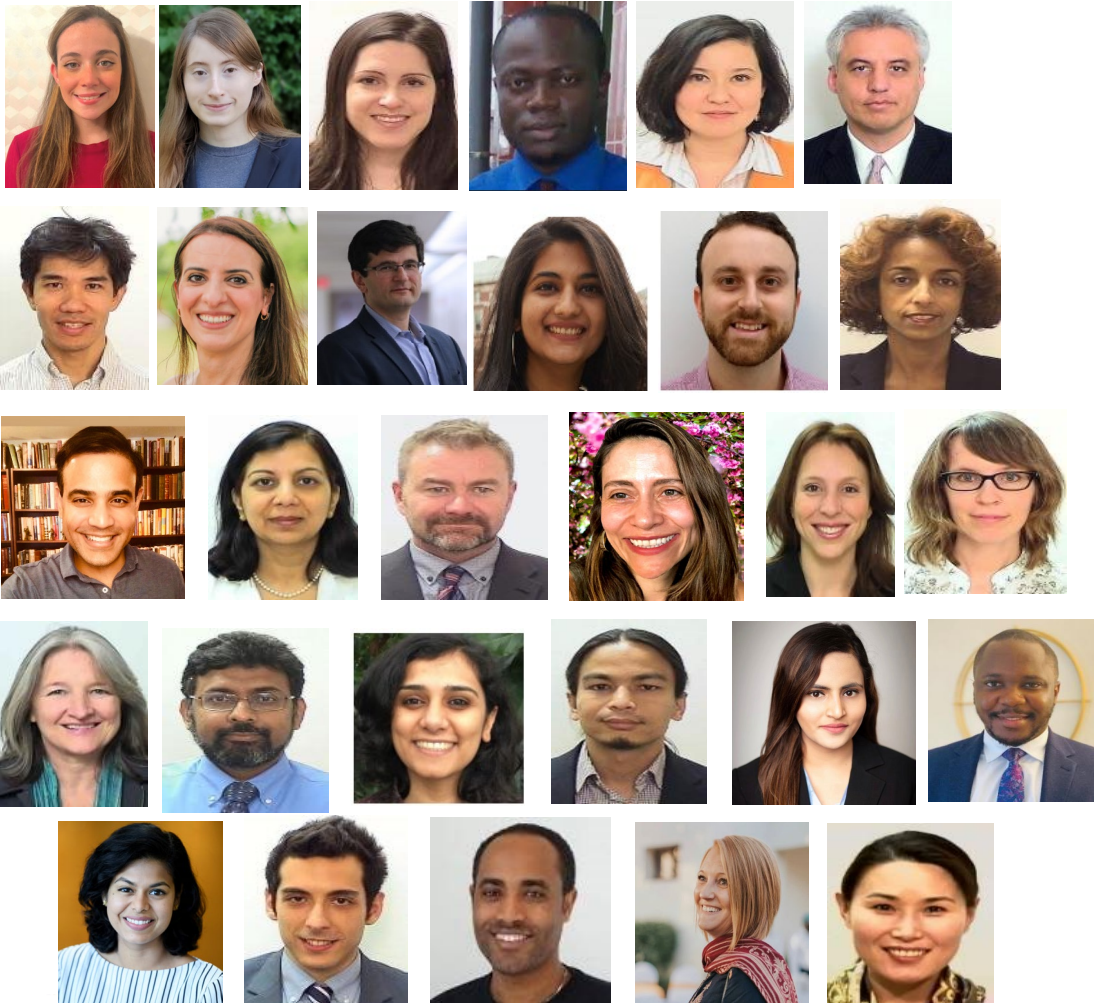


# MIGRANTS, REFUGEES, ... and ... SOCIETIES

# TEAM, CONSULTATIONS, AND ADVISORY PANELS

## A multisectoral core team



An **academic advisory panel**, with 21 members – economics, social sciences, law – including a Nobel laureate

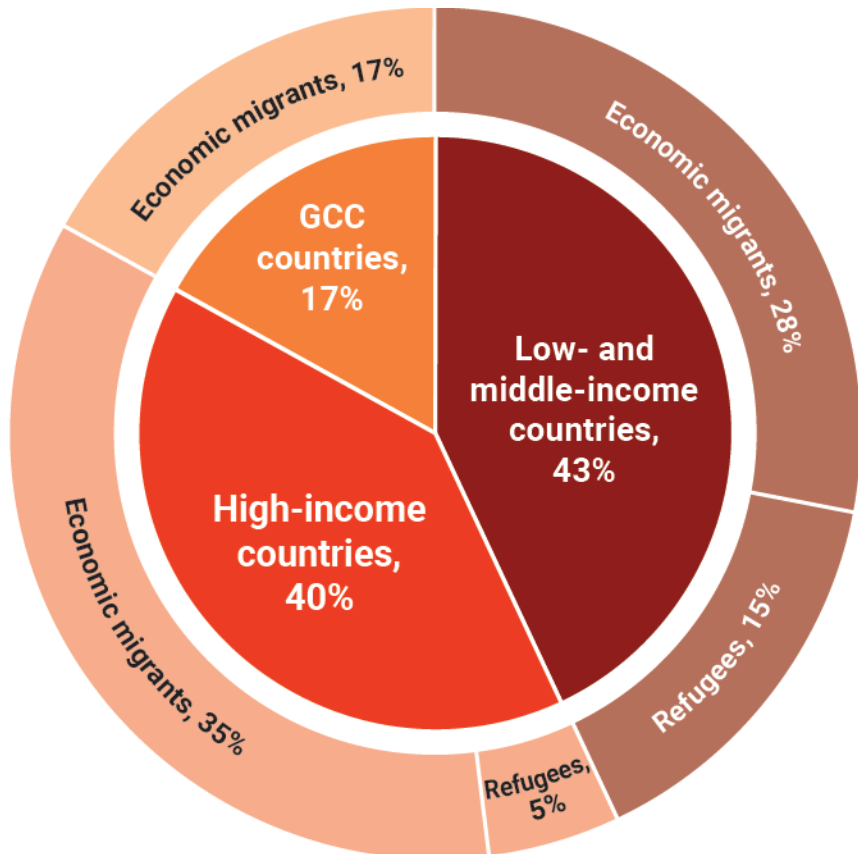
A **high-level advisory panel**, with ministerial-level members representing all regions, heads of UNHCR, IOM, and ILO, and leading civil society figures

The team has extensively consulted with a series of countries—including origin, destination, and refugee-hosting countries across all regions—and met with policymakers, private sector individuals and executives, and civil society organizations on the ground.

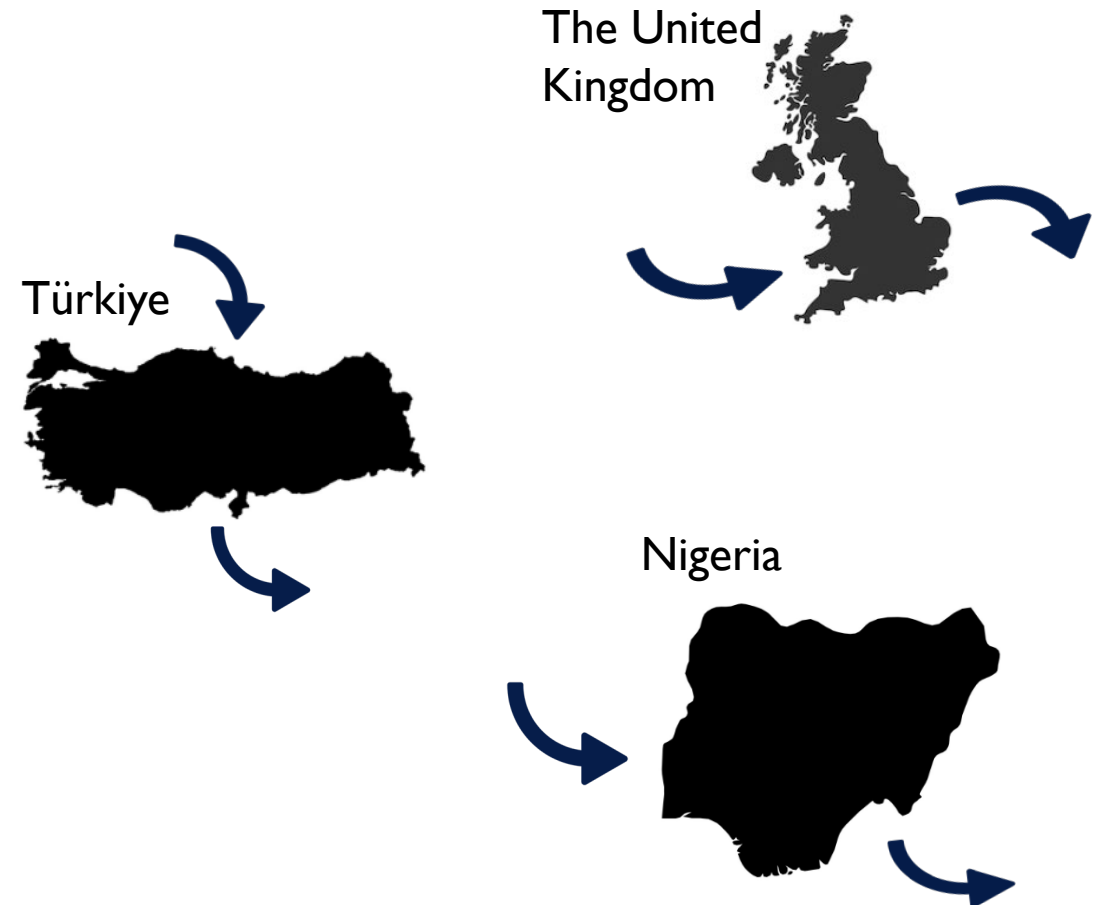


# IN A FOREIGN LAND

**184 million migrants and refugees**  
2.3 percent of the world population

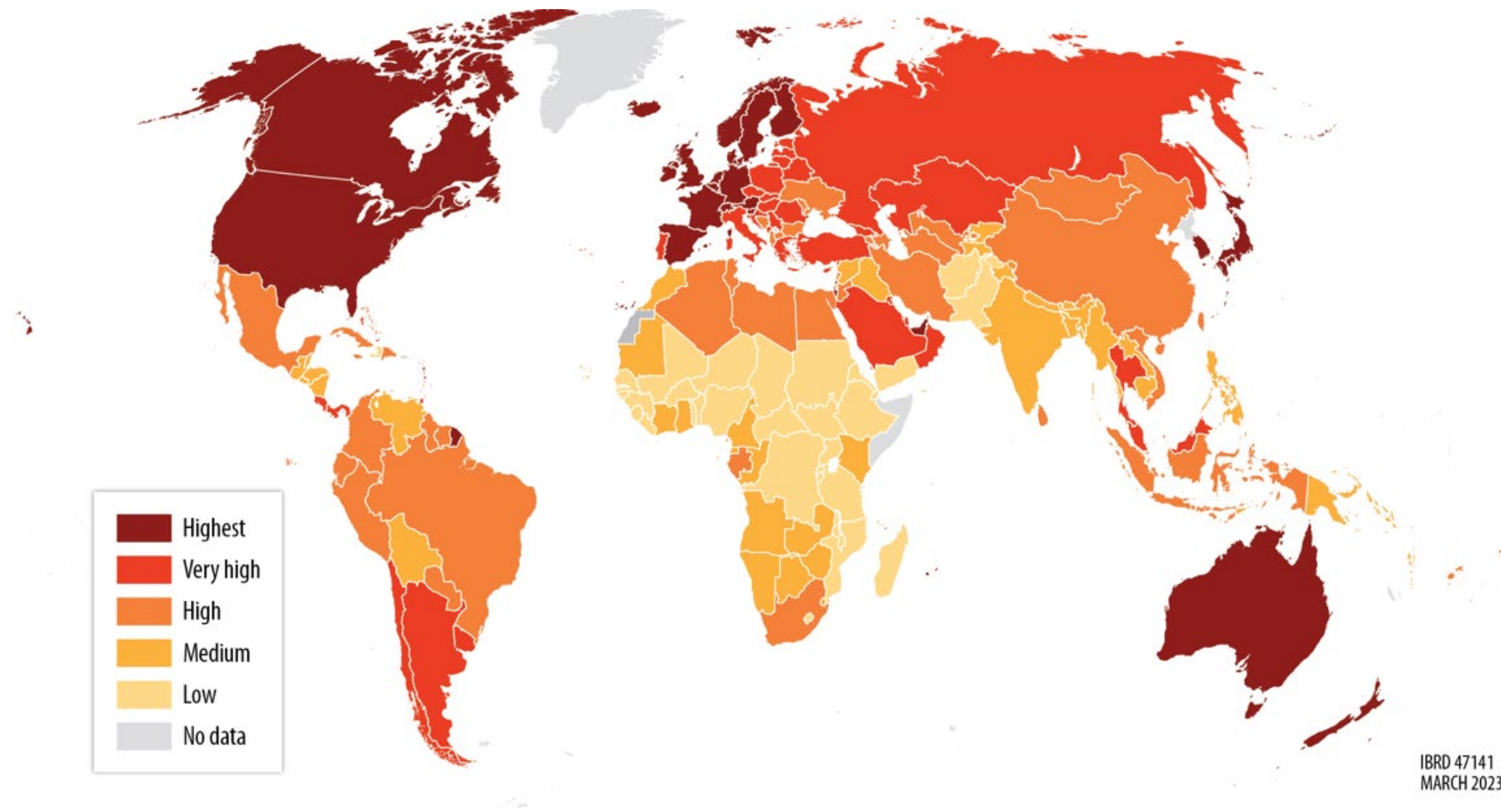


Many countries—at all income levels—are both origin and destination at the same time



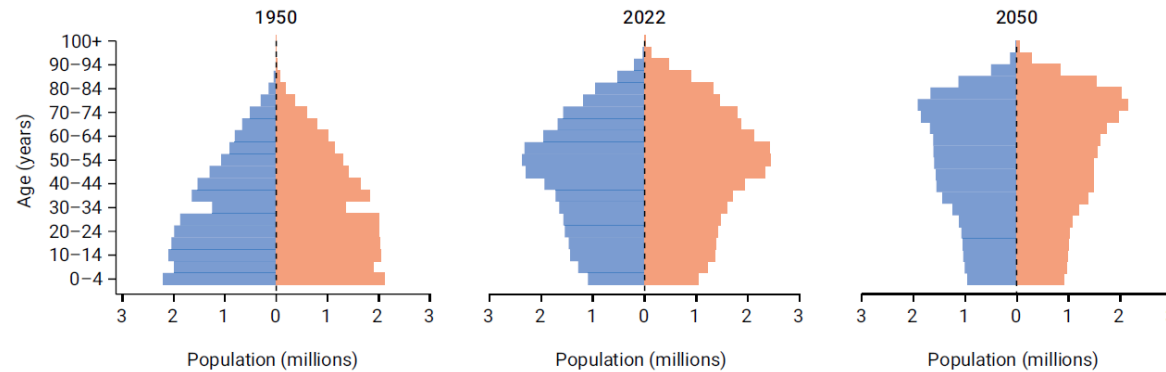
# ADJUSTMENT: RESPONDING TO WELFARE GAPS

*Map of countries according to their category in the Human Development Index Report for 2021-22*

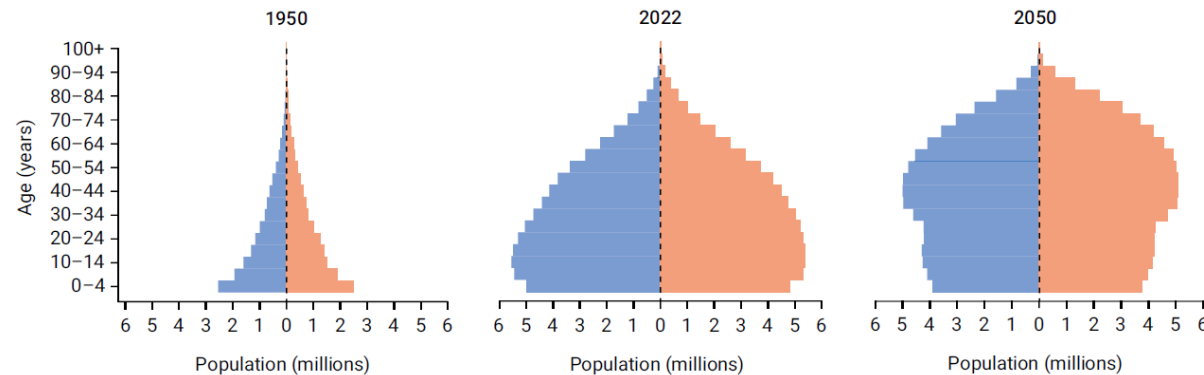


# DEMOGRAPHICS: THE COMING COMPETITION FOR WORKERS AND TALENT

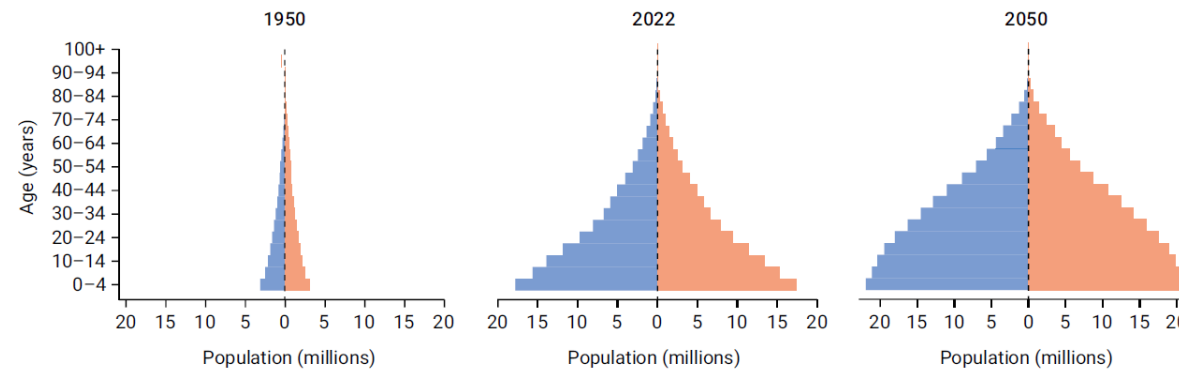
**Italy's** population is aging and declining



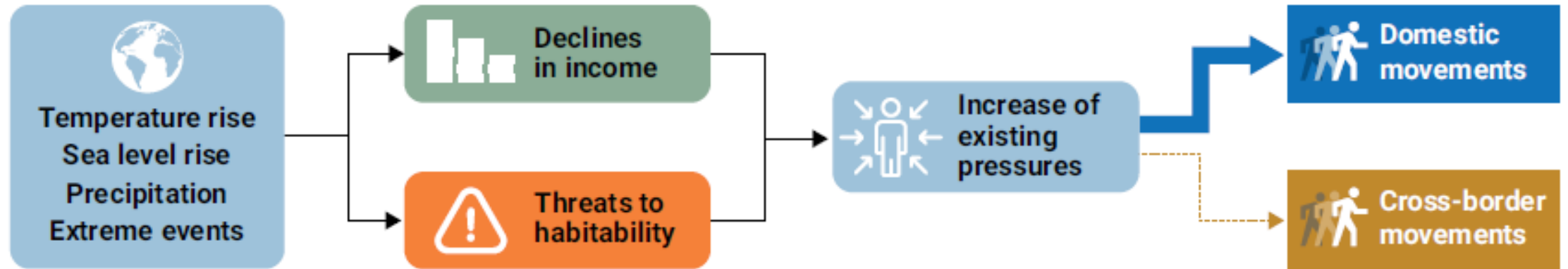
In **Mexico**, the demographic transition is well under way and is expected to accelerate



**Nigeria** will remain young well through the middle of the century

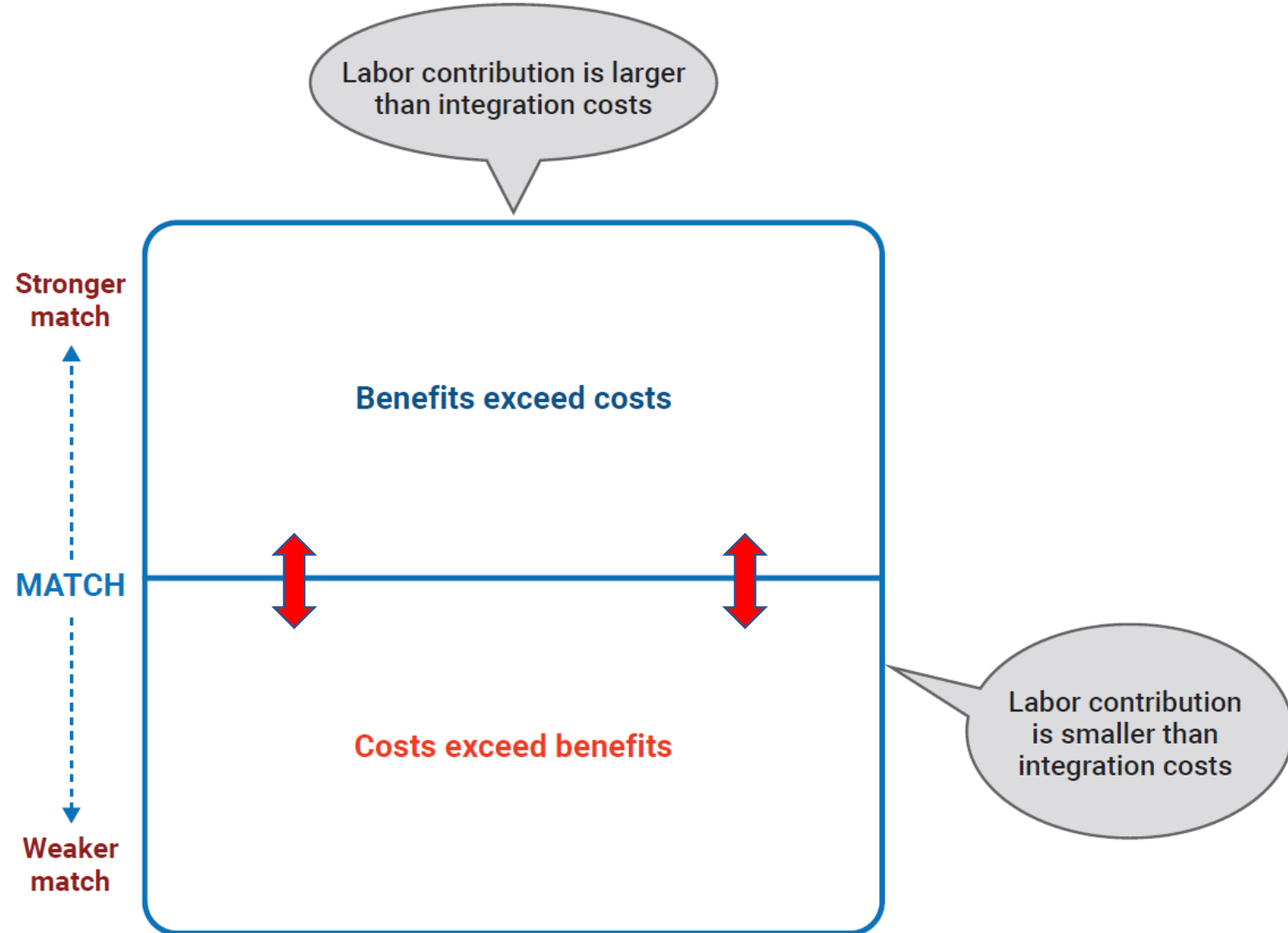


# CLIMATE: RISKS AND THE NEED FOR URGENT ACTION



# THE MATCH AND MOTIVE MATRIX

# ECONOMICS: MIGRANTS' MATCH

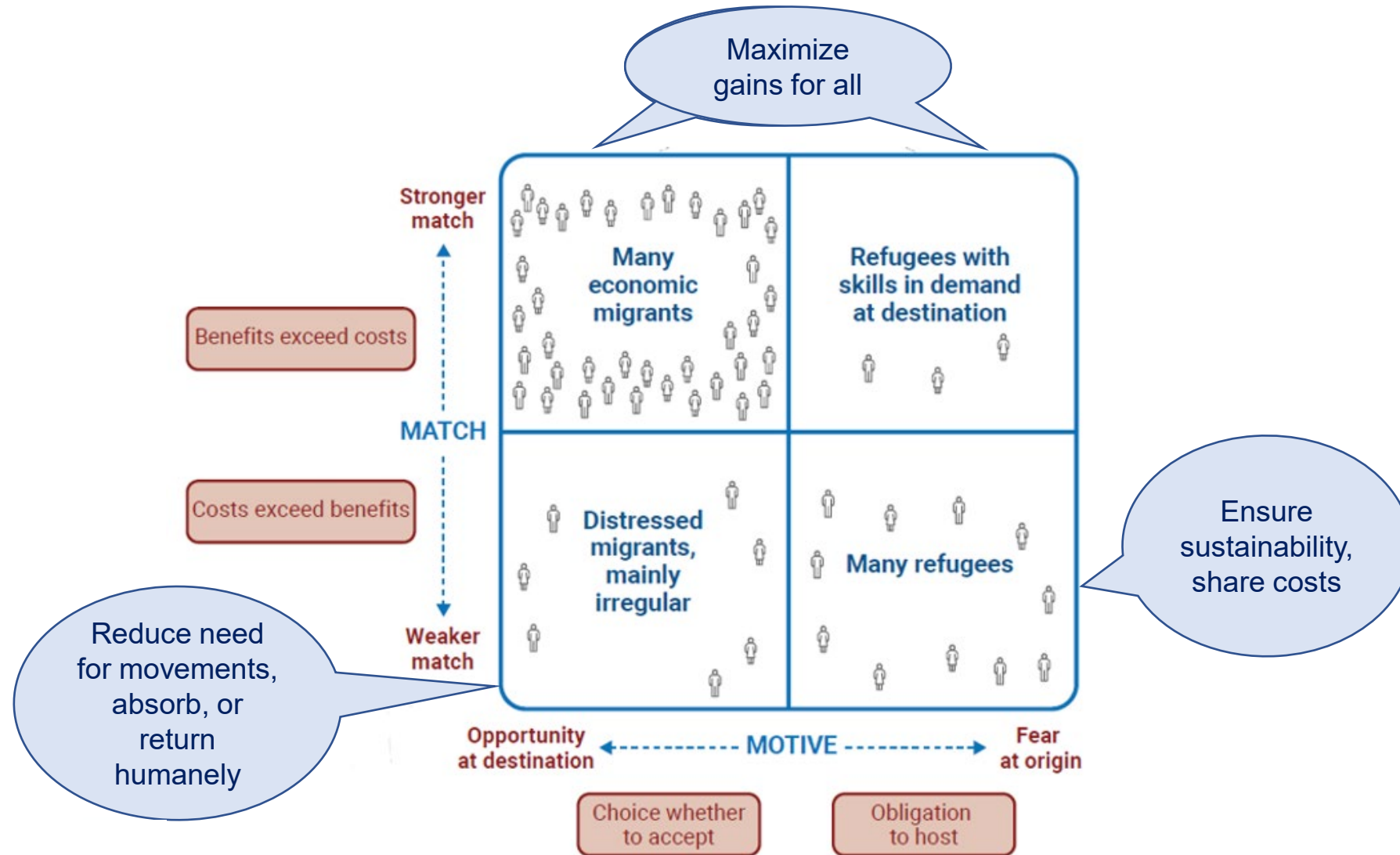




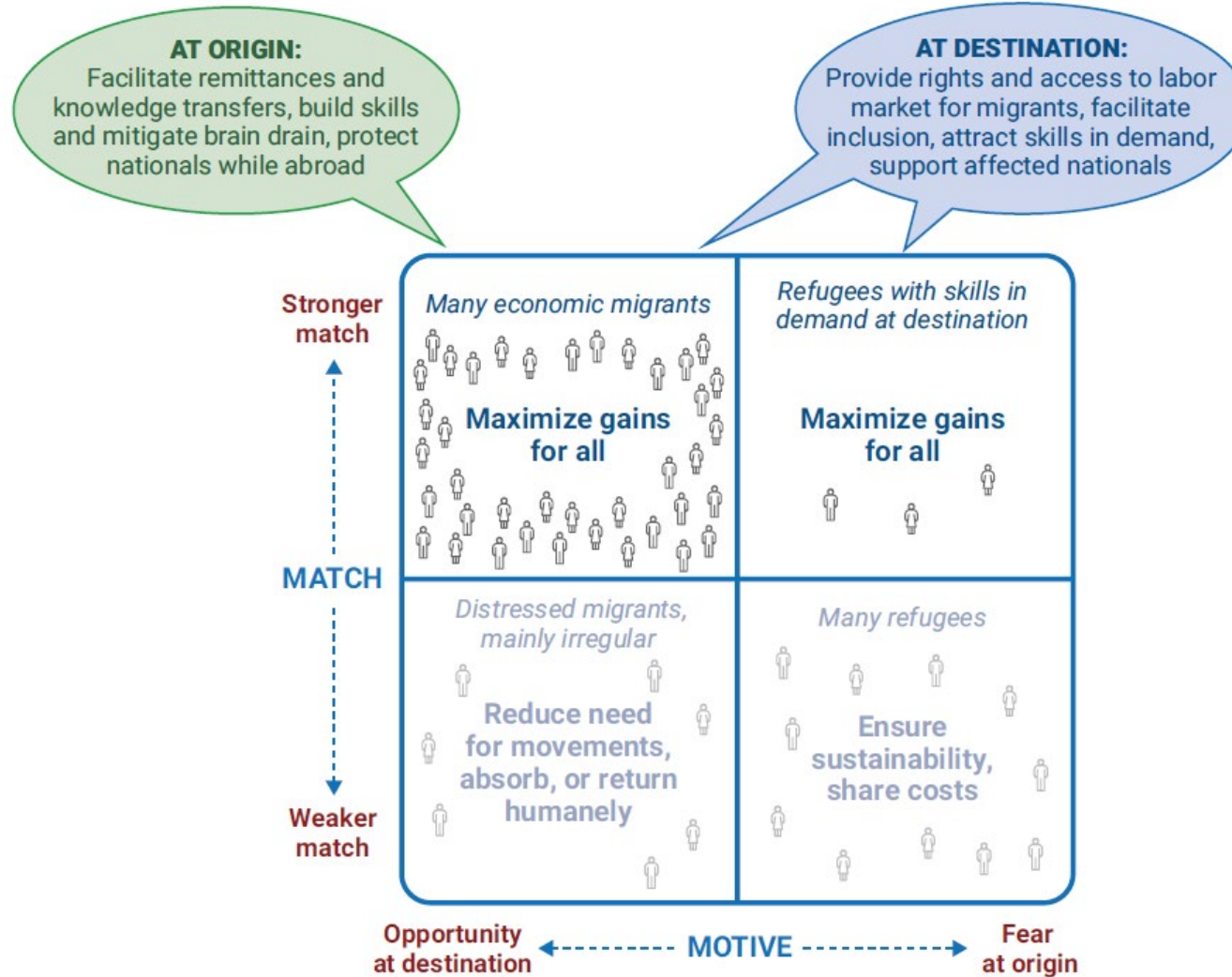
# INTERNATIONAL LAW: MIGRANTS' MOTIVE



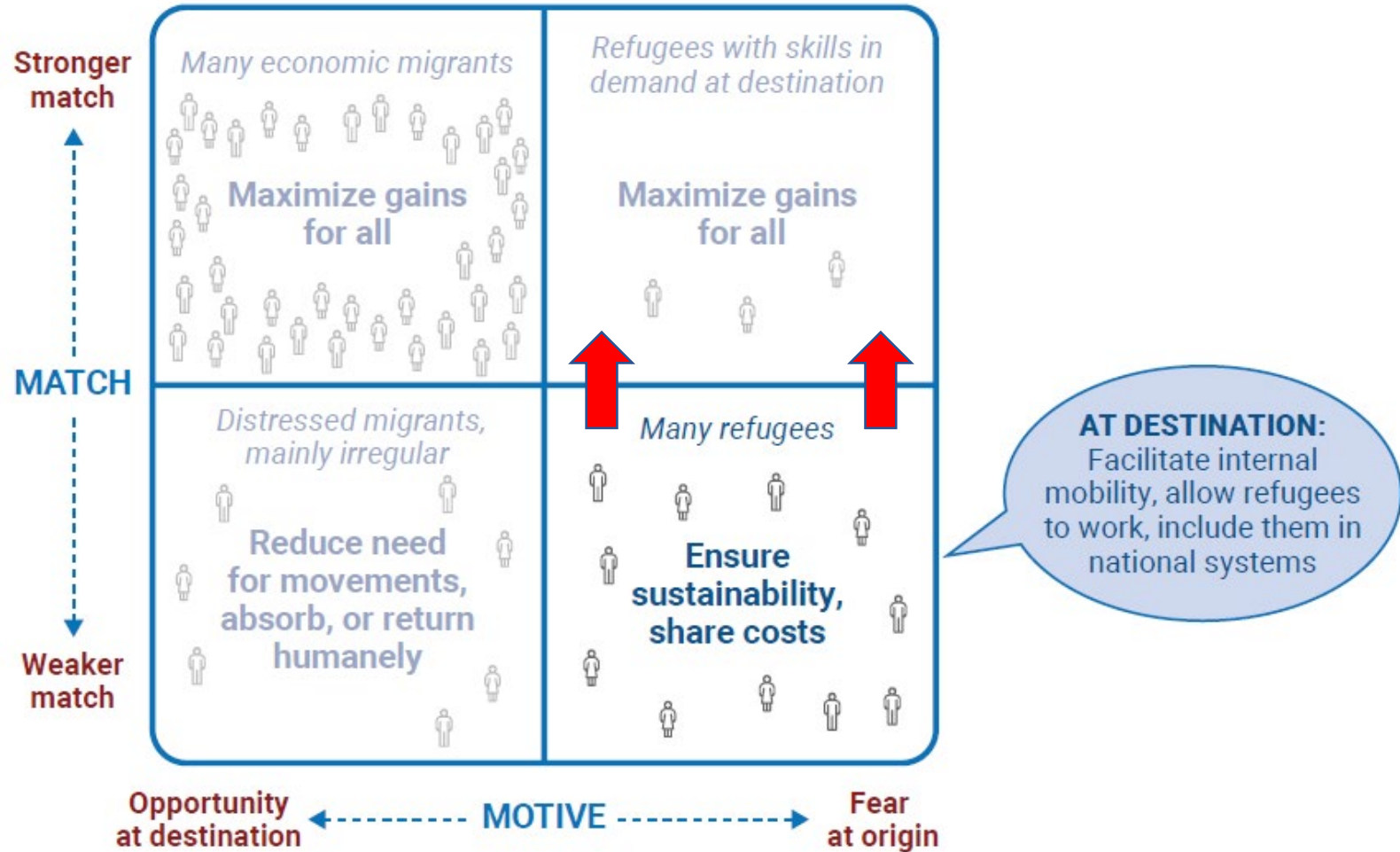
# COMBINING MATCH AND MOTIVE



# WHEN THE MATCH IS STRONG

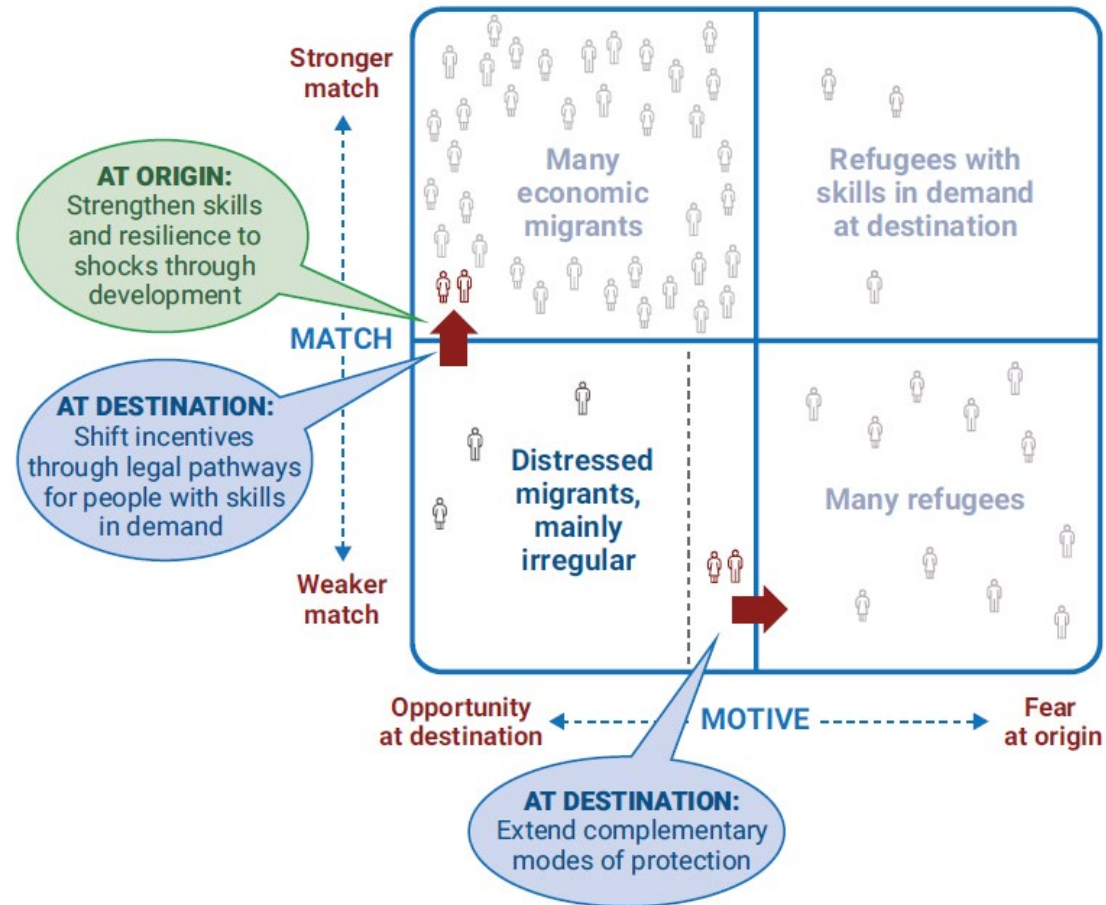


# WHEN THE MATCH IS WEAKER BUT MIGRANTS ARE DRIVEN BY FEAR

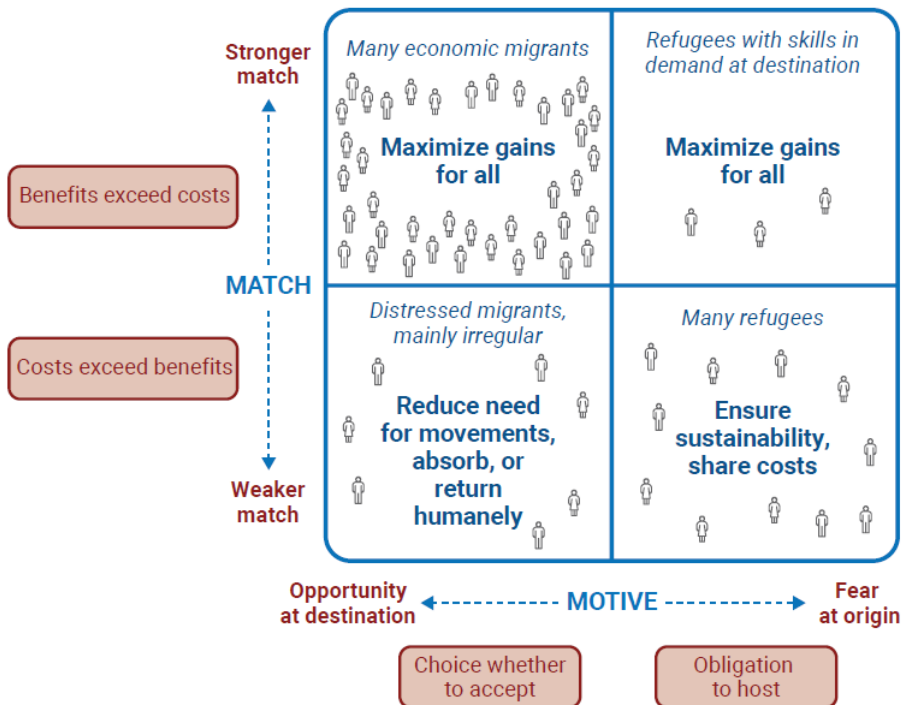




# WHEN THE MATCH IS WEAKER AND MIGRANTS ARE NOT DRIVEN BY FEAR



# MAKING POLICY DIFFERENTLY



## Working together

### Bilateral cooperation:

- Bilateral labor agreements
- Global Skills Partnerships

### Multilateral cooperation:

- Responsibility-sharing for refugees
- Norms setting

## Financing instruments

- To support non-citizens
- To provide a medium-term perspective
- To incentivize cross-border cooperation

## Inclusive decision-making

- Low- and middle-income countries
- Private sector, civil society, workers' organizations, local authorities, and other stakeholders
- Migrants and refugees

# KEY MESSAGES

## KEY MESSAGES

### **Migration is necessary for countries at all levels of income**

#### **When migrants' match is strong, the gains are large**

- Destination countries should not let social and cultural controversies overshadow the economic gains from migration
- Most migrants benefit greatly from their move—and even more so when they have rights at destination
- Origin countries should actively manage migration for its development benefits

#### **When migrants' match is weak, costs need to be shared—and reduced—multilaterally**

- Refugee situations should be managed as medium-term development challenges, and not just as humanitarian emergencies
- Distressed migration needs to be reduced, while respecting people's dignity

#### **Making migration work better requires doing things differently**

- Stronger international cooperation is essential: bilateral to enhance migrants' match, multilateral to respond to movements driven by fear
- To make change happen, underrepresented voices must be heard, including developing countries'





[www.worldbank.org/wdr2023](http://www.worldbank.org/wdr2023)

#wdr2023