



ASIA PACIFIC
PANDEMIC
PREPAREDNESS AND RESPONSE
REGIONAL FORUM



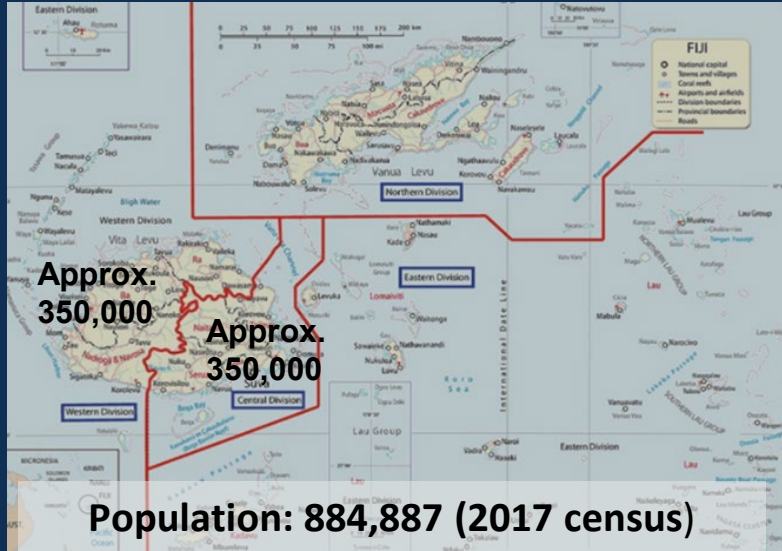
FIJI



WORLD BANK GROUP



Ministry of Economy
and Finance



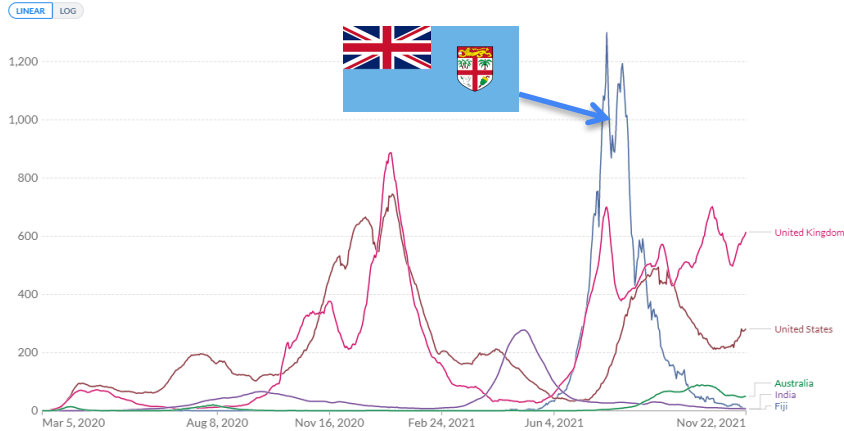


Disease Burden at Global Scale

Delta wave

Daily new confirmed COVID-19 cases per million people
7-day rolling average. Due to limited testing, the number of confirmed cases is lower than the true number of infections.

Our World in Data



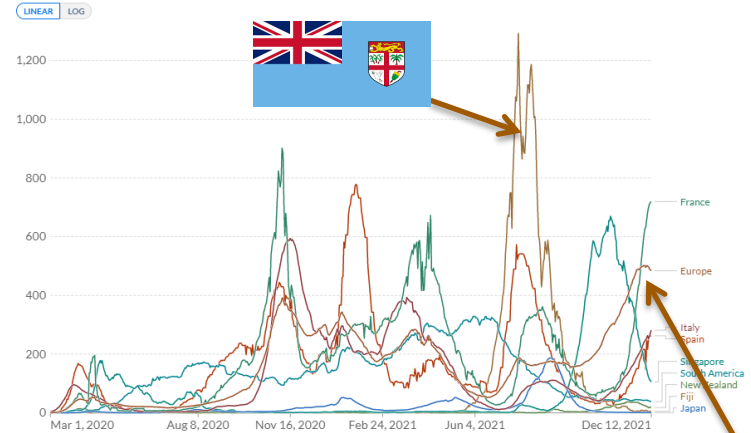
Source: Johns Hopkins University CSSE COVID-19 Data

CC BY

▶ Jan 28, 2020 ○ Sep 8, 2022

Daily new confirmed COVID-19 cases per million people
7-day rolling average. Due to limited testing, the number of confirmed cases is lower than the true number of infections.

Our World in Data



Source: Johns Hopkins University CSSE COVID-19 Data

▶ Jan 28, 2020 ○ Sep 8, 2022

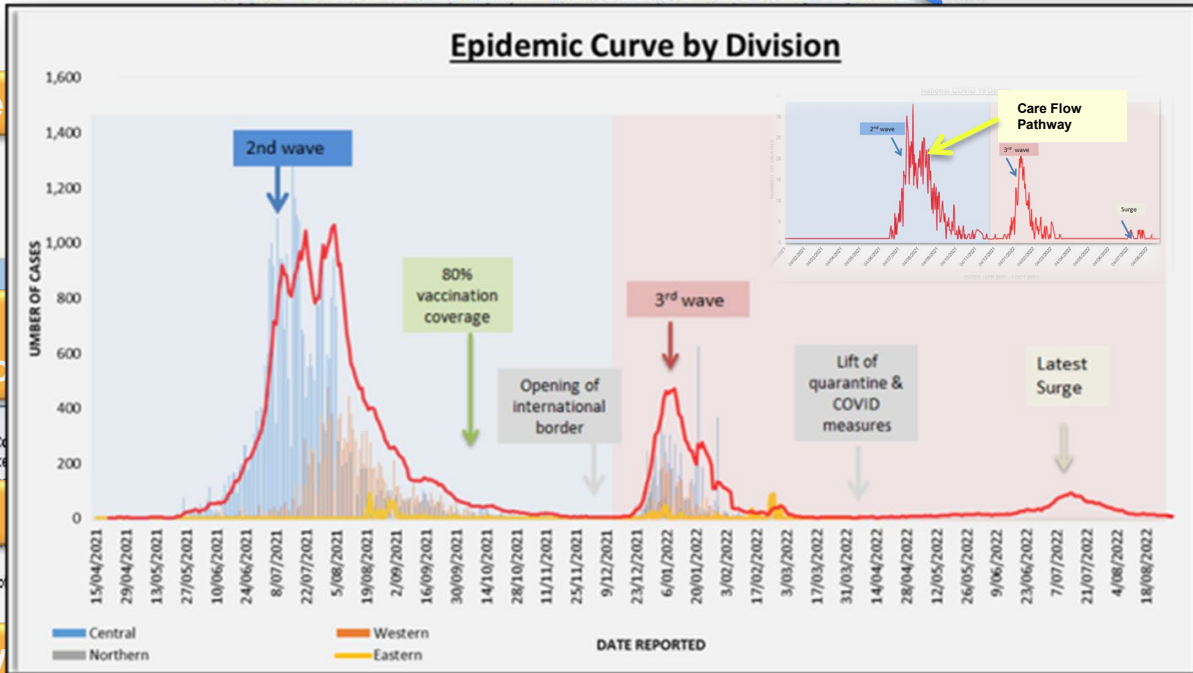
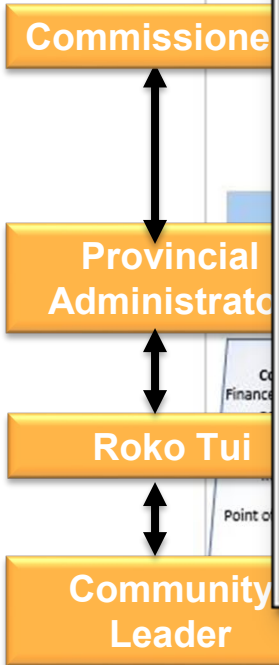
Omicron wave



FIJI



COVID-19 Incident Management Team



Liaison officers – Representing Government Ministries

ERF EMERGENCY RESPONSE FRAMEWORK

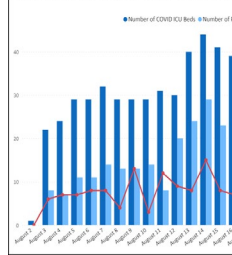
World Health Organization



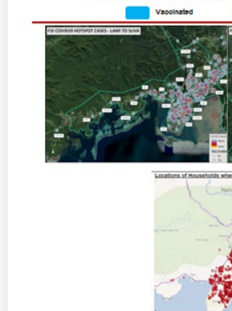
2. Capacity to Respond: Technical & Surge support

- Technical capacity:
 - i. Diagnostics & Surveillance
 - ii. Health Information Management- using the right indicators to foster support
 - iii. Digital Infrastructure
 - iv. Clinical Care- adaptive
 - v. Border Health Protection

DETAILS OF COVID ICU BEDS, PATIENTS IN COVID ICU BEDS



Central He Non-vaccinated v



Fiji indicators for the week of 30 Aug – 5 Sep

Division/subdivision	Case incidence per 100,000	New hospitalizations per 100,000	Death rate per 100,000	Tests conducted per 1000	Test positive rate %	Cumulative vaccine coverage (2 dose)
National	161	26	1.8	10.3	16%	51%
Central	133	27	2.0	9.9	14%	52%
Naitasiri	276	-	4.8	18.0	15%	41%
Reva	138	-	1.7	7.0	20%	74%
Serua/Namosi	570	-	3.5	15.4	37%	41%
Suva/Nasimu	76	-	1.5	9.3	8%	46%
Tallevu	107	-	4.1	10.0	11%	26%
Western	216	36	2.5	10.3	21%	61%
Ba	188	-	1.8	4.5	42%	77%
Lautoka/Vasava	306	-	1.0	15.0	20%	60%
Nadi	170	-	4.1	12.0	14%	62%
Nadroga/Navosa	173	-	1.9	7.7	22%	63%
Rakiraki	173	-	0.0	7.2	24%	42%
Tavua	250	-	9.6	5.6	44%	47%

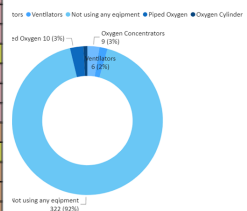
Cases and deaths sourced from the master list held by the MoHMS IMT
 Hospitalizations are based on aggregate data subject to referrals between sites; therefore, are not disaggregated by subdivision

Fiji indicators for the week of 27 Sep – 3 Oct

Division/subdivision	Case incidence per 100,000	New hospitalizations per 100,000	Death rate per 100,000	Tests conducted per 1000 (PCR)	Test positive rate %	Cumulative vaccine coverage (2 dose)
National	43	8	0.9	7.5	6%	75%
Central	40	8	1.2	7.7	5%	77%
Naitasiri	10	-	0.0	2.1	5%	71%
Reva	71	-	0.0	7.8	9%	93%
Serua/Namosi	124	-	0.0	6.8	18%	67%
Suva/Nasimu	27	-	1.5	8.4	3%	72%
Tallevu	41	-	4.1	5.6	7%	62%
Western	63	12	0.8	8.0	8%	79%
Ba	33	-	0.0	5.0	7%	77%
Lautoka/Vasava	89	-	2.0	9.6	9%	81%
Nadi	61	-	0.0	9.1	7%	82%
Nadroga/Navosa	61	-	0.0	6.0	10%	74%
Rakiraki	45	-	3.5	9.5	5%	69%
Tavua	63	-	0.0	5.6	11%	86%

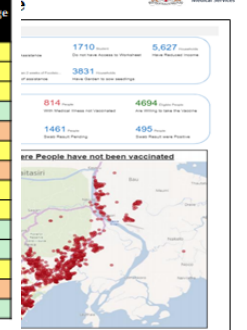
Cases and deaths sourced from the master list held by the MoHMS IMT
 Hospitalizations are based on aggregate data subject to referrals between sites; therefore, are not disaggregated by subdivision
 Testing data are sourced from laboratory datasets supplied by F2DC and do not include AgNDT tests
 Vaccination coverage sourced from Daily Briefing (4 October 2021)
 Vaccination coverage for Suva/Nasimu represents the coverage for Suva

ical Equipments (last 24 hr)



not using any equipment: 322 (50%)

ere People have not been vaccinated



3. Support : Whole of Government & Society Approach

(Simultaneous PH response & Vaccination campaigns)

- Whole of Government:
Coordination of knowledge, skills, experiences to optimise resources
- Whole of Society: Inclusivity
- Resilient Health System includes making the community resilient

- RCCE
 - a) RCCE Working group
 - b) **Action oriented meetings** and coordinated efforts led to **harmonized communication and course correction**
 - c) Social listening, tiles, radio, talk back shows, targeted webinars- **produced real time and quick turn around time**
 - d) **Social listening** allowed a **2 way communication**
- ✓ **Accessibility vs confidence**



Build Back Better Resilient Health System

- Vinaka vakalevu!



