

WAREMP QUESTIONS AND ANSWERS FROM 8 APRIL WEBINAR

1. May an innovative solution, such as transforming waste of any kind into energy, be considered?

WA-REMP investments focus primarily on reinforcing interconnections, enabling the deployment of renewable energy (primarily solar), and institutional and regulatory framework reinforcements to enable an efficient regional electricity market. While no biomass or similar generation projects are included in the current scope, innovative clean energy projects are not excluded from being incorporated in subsequent stages or other programs.

2. Will there be a facility focused on enabling private sector investment in WA-REMP? (Similar to the Regional Energy Access Financing Platform in the East African Regional program)

No – the WA-REMP is not structured to include a financing platform as done in ASCENT. Private sector investment will be primarily through IPP tenders and encouraged through the liquidity enhancement revolving facility (LERF).

3. Is the Ghana - Cote d'Ivoire interconnection project already fully funded by the World Bank?

Yes - the Ghana - Cote d'Ivoire Interconnection Project is fully funded by the World Bank, including resettlement costs and implementation of the safeguard instruments.

4. Is there a demand for further co-financing of public infrastructure? If so, how could finance institutions get involved?

There are opportunities for financing public investments under subsequent phases of the MPA and in other national level investments. Finance institutions can explore the co-financing platform which outlines current financing needs on various operations or engage with the technical teams at national level in the countries of interest. Most important is to engage with the client and ensure interest and alignment on type and terms of financing. In many countries, donor working groups have been established to enable exchange on different initiatives and investments and explore co-financing opportunities.

5. Are there electricity interconnectors planned between North African countries and Sub-Saharan countries in West Africa? (either in the pipeline, or as a longer-term plan)

There are no current planned interconnectors in the pipeline nor in advanced discussions for the longer-term.

6. When should we expect the RFP for Consultancies for these projects to be published?

Key planned dates (tentative) for the interconnector are as follows:

Project Management Consultancy

- ✓ *Launch of Request for Expression of Interest (REOI)* - Qtr 2 2025
- ✓ *Issue of Request for Proposal* - Qtr 3 2025
- ✓ *Contract Award - Project Management Consultant* - Qtr 1 2026

Works Contracts (Transmission Line and Substation)

- ✓ *Launch of Bidding Document for Works* - Qtr 2 2026
- ✓ *Award for Works Contracts* - Qtr 4 2026

Ghana (GRIDCo) and Cote d'Ivoire (CIE-ENERGIES) will work jointly in line with the Financing Agreement Requirements for both countries to align the joint procurement processes to be launched for the selection of a Common Owners Engineer and Contractor for the Transmission Interconnection Line.

7. How can organizations apply for these projects to bring off-grid solar electricity to communities that do not have access to electricity in the state where we work?

The WA-REMP investments in current phases do not include off-grid investments. However, other Bank operations such as the DARES and ROGEAP projects are targeted to develop off-grid markets and support the deployment of off-grid solutions in communities that cannot be reached cost-effectively through on-grid investments.

8. What is the point installing such volume of BESS when there is not yet capacity excess? How will that increase energy access?

The Mauritania BESS will primarily serve as ancillary service provider for the network (voltage and frequency regulation). As a secondary service, it will provide energy storage capabilities to accommodate the already high variable renewable energy installed in Mauritania (200 MW of solar and wind). The BESS was dimensioned through a dedicated grid analysis and related feasibility studies to serve the needs of Mauritania for the next ten years.

9. Is there an initial route map between Bingerville Substation and the border, and is the path parallel to the existing transmission line to Ghana? Will cash crops such as banana gardens need to be detoured along the route?

We wish to clarify that there exists an interconnection between Ghana and Cote d'Ivoire (225kV capacity line) which runs from the Prestea substation, Ghana through to Mayassue and then to Riviera, in Cote d'Ivoire. The existing transmission line runs south of the proposed approximately 245km 330kV Dunkwa to Bingerville interconnection line and is averagely 35km apart from the existing line as it exits from the 225kV Prestea Substation. The two lines converge around Mafere, Cote d'Ivoire and run parallel for approximately 77km to the proposed 330kV Bingerville Substation where it terminates. (ref: Fig1, Fig2, Fig 3).

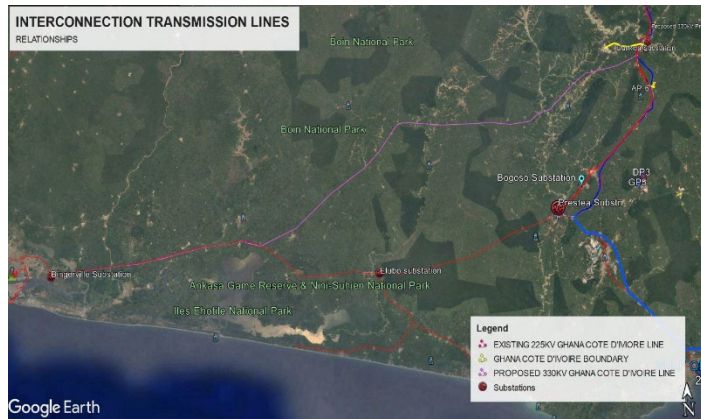


Fig 1: Overview of Interconnection Lines (red = 225kV line, Magenta = 330kV line)

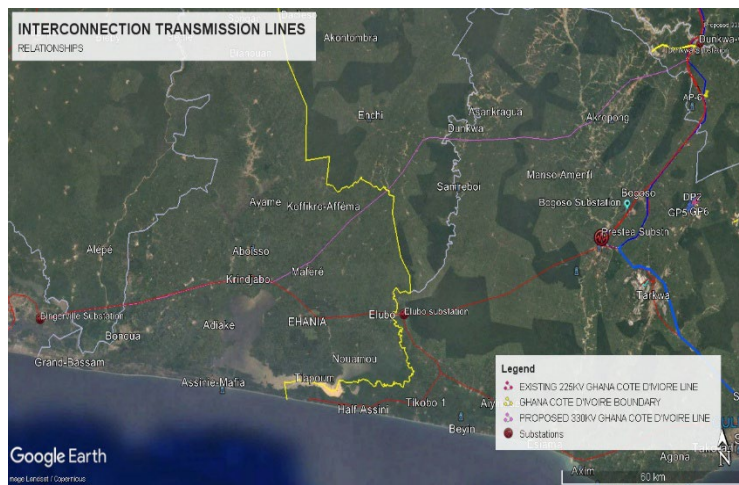


Fig 2: Places Along the Interconnection Lines

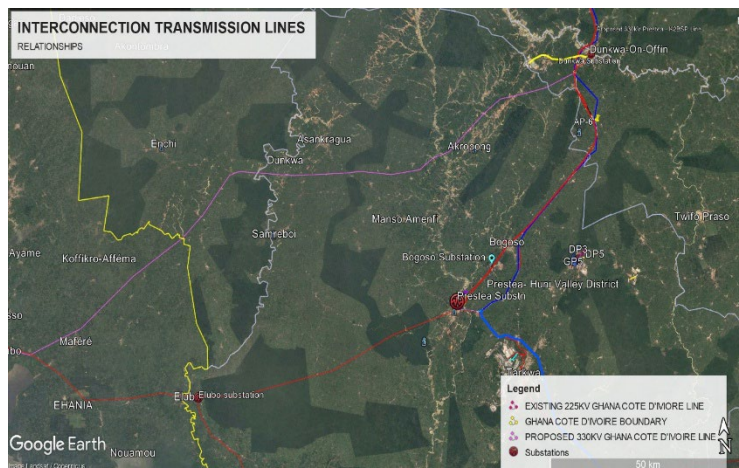


Fig 3: Ghana Section of the Transmission Lines

The proposed new line is routed as much as possible to minimize economic impacts to Project Affect Persons. Where diversions of the route have not been possible, appropriate compensation measures have been considered in line with the World Bank ESS5 to allow for construction activities to take place.

10. Where can we find more information about the design standards for the projects presented?

These would form part of the Technical Requirements in the Bidding Documents to be issued to prospective bidders.

11. Are there plans to develop forms of thermal generation in the energy mix to achieve Mission 300?

Mission 300 investments are defined to optimally address the respective countries' needs in meeting the access objectives. Whereas most of the investments will be on direct access, complementary investments on generation (renewable or transition energy) or transmission will be decided in alignment with the least cost plans in the respective countries.