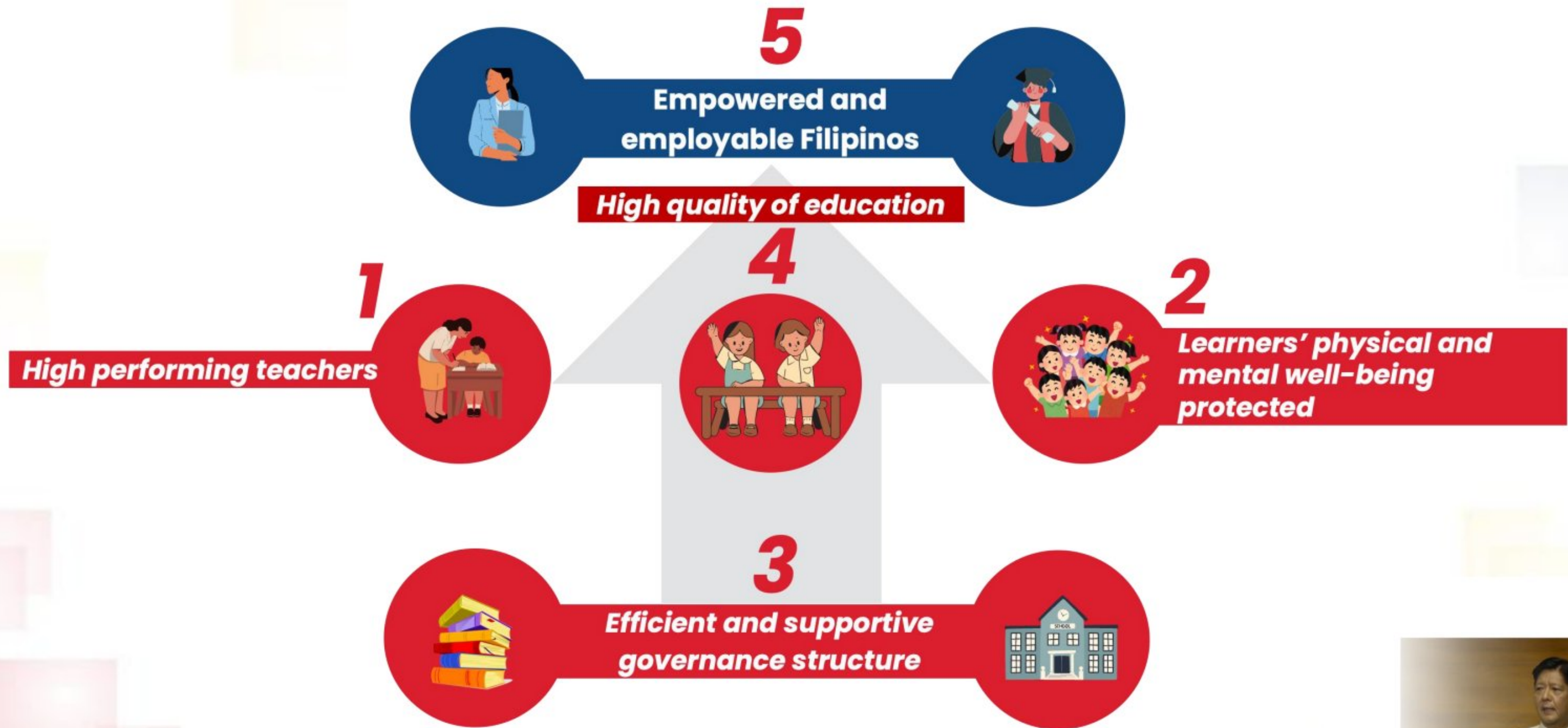


Key Outcomes of 5-Point Reform Agenda



Our system of education must be strategically calibrated to make sure that our youth are not only taught to become literate; but, it must also consciously develop them into problem-solvers, and into critical thinkers — hungry for success and ready for the future!

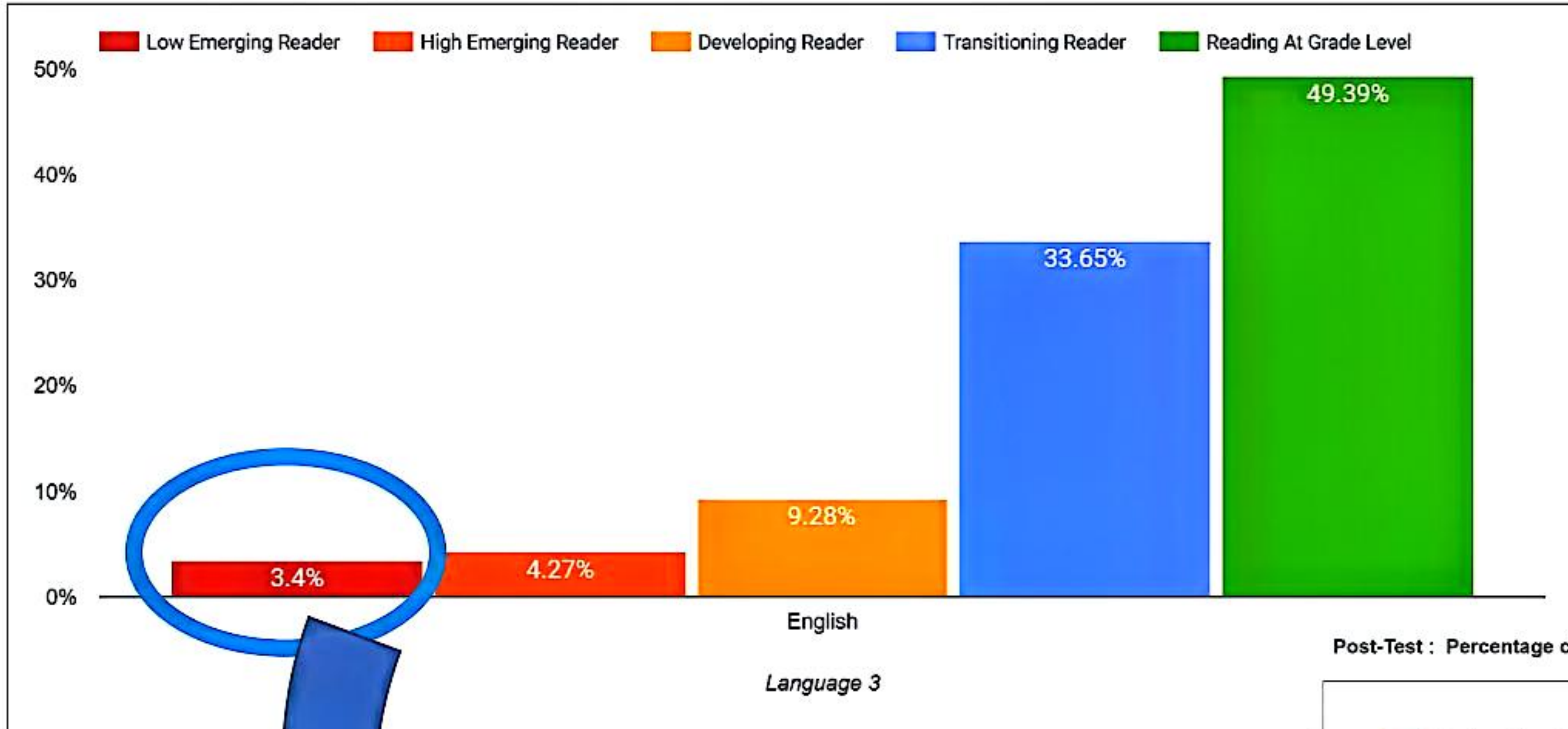
-President Ferdinand Marcos Jr. during his 3rd State of the Nation Address



PRE- and POST- TEST RESULTS

Grade 3 : Language 3 (English)

End-of School Year 2024-2025



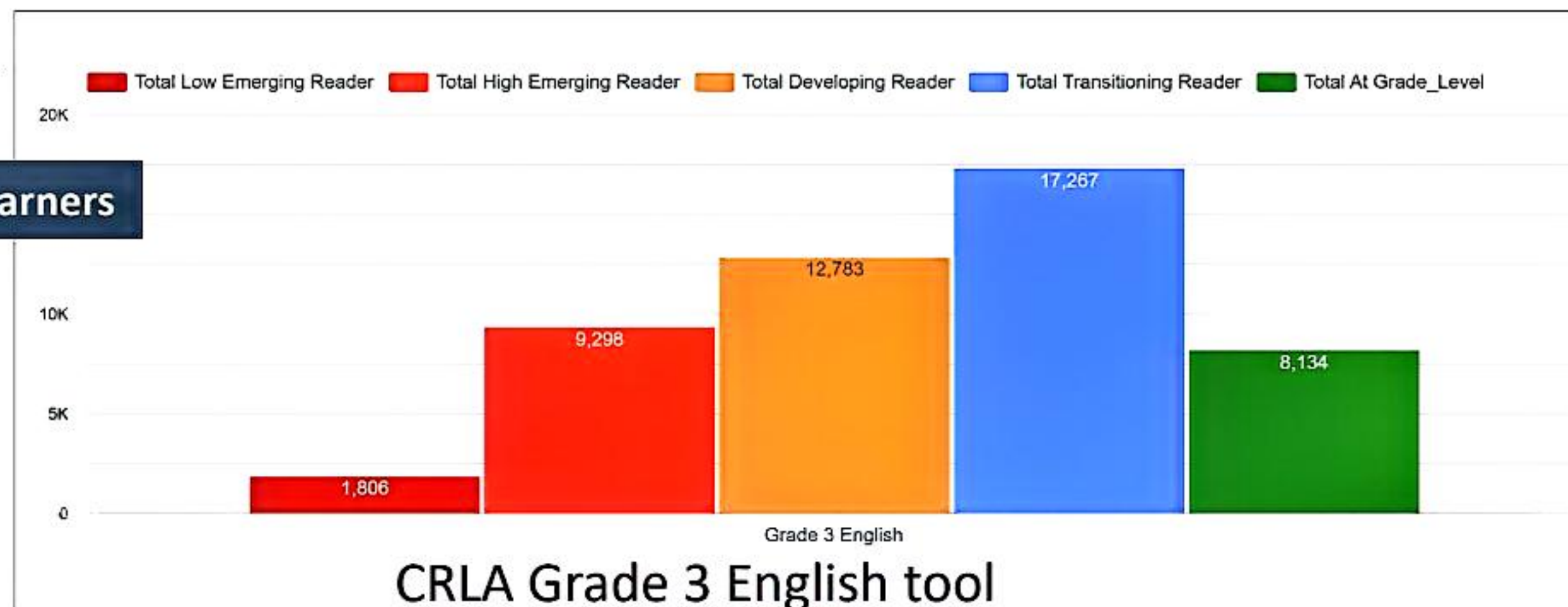
Of the more than 1.7M **Grade 3** learners who took the reading assessment at the end of SY 2024-2025, almost 60K were categorized as Low Emergent Readers.

These are learners who have not yet mastered phonics skills and struggles to read simple words at **Grade 1** level.

Based on 49,288 who took the post test by the end of the program, only **1,806** remained at this level and the rest have moved to higher categories, with 8,134 reaching Grade 3 reading level.

Partial post-test results from 49,228 learners

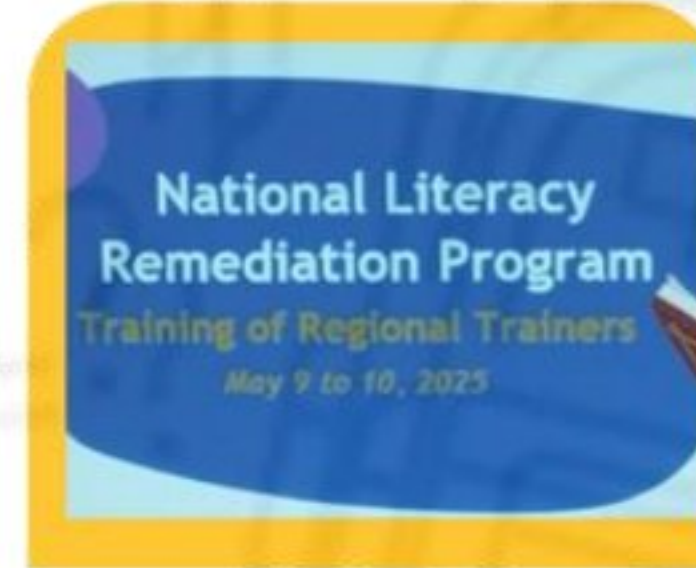
Post-Test : Percentage of Learners By Reading Profile



Target: 59,617 learners

CRLA Grade 3 English tool

A SYSTEMS APPROACH TO IMPLEMENTATION



VERY TARGETED

Based on English
CRLA for EoSY
2024-2025

Mandatory for
Low Emergent
Readers

SMALL GROUPS

1-12 per group

DAILY CONSISTENT SCHEDULE AND ROUTINES

2 hours per day

Monday thru
Thursday

4 weeks

TRAINING

National
Training of
Trainers

Practicing
reading
intervention
experts as
trainers

Training rollout
for teachers and
school heads

REMEDIATION RESOURCES

Remediation
Activity Set (RAS)
and Learner
Activity Set (LAS)

MANIPULATIVES

Letter Tiles
Picture Cards
Alphabet Cards
Word Cards

STAKEHOLDER ENGAGEMENT

Parent and
community
assemblies

Weekly
Meetings

Five Domains of the SRRA



The ARAL School Readiness and Responsiveness Audit is guided by **five key domains**, each designed to measure critical aspects of a school's capacity to implement the ARAL Program effectively. These domains contain specific indicators that help identify both **strengths** and **areas for improvement**.