

A close-up, black and white photograph of an elephant's eye. The skin is heavily wrinkled and textured, with the eye itself partially visible in the center-right. The lighting creates deep shadows in the wrinkles, emphasizing the ruggedness of the animal's skin.

Governance In Connectivity Conservation

Moving Out Of Fortresses To Conserve Ecological Processes

GOVERNANCE IN CONNECTIVITY CONSERVATION

The Value of Diversity In Stakeholders

A Roundtable To Discuss Trade-Offs

Sustaining Networks And Connections

GOVERNANCE IN CONNECTIVITY CONSERVATION

The Value of Diversity In Stakeholders

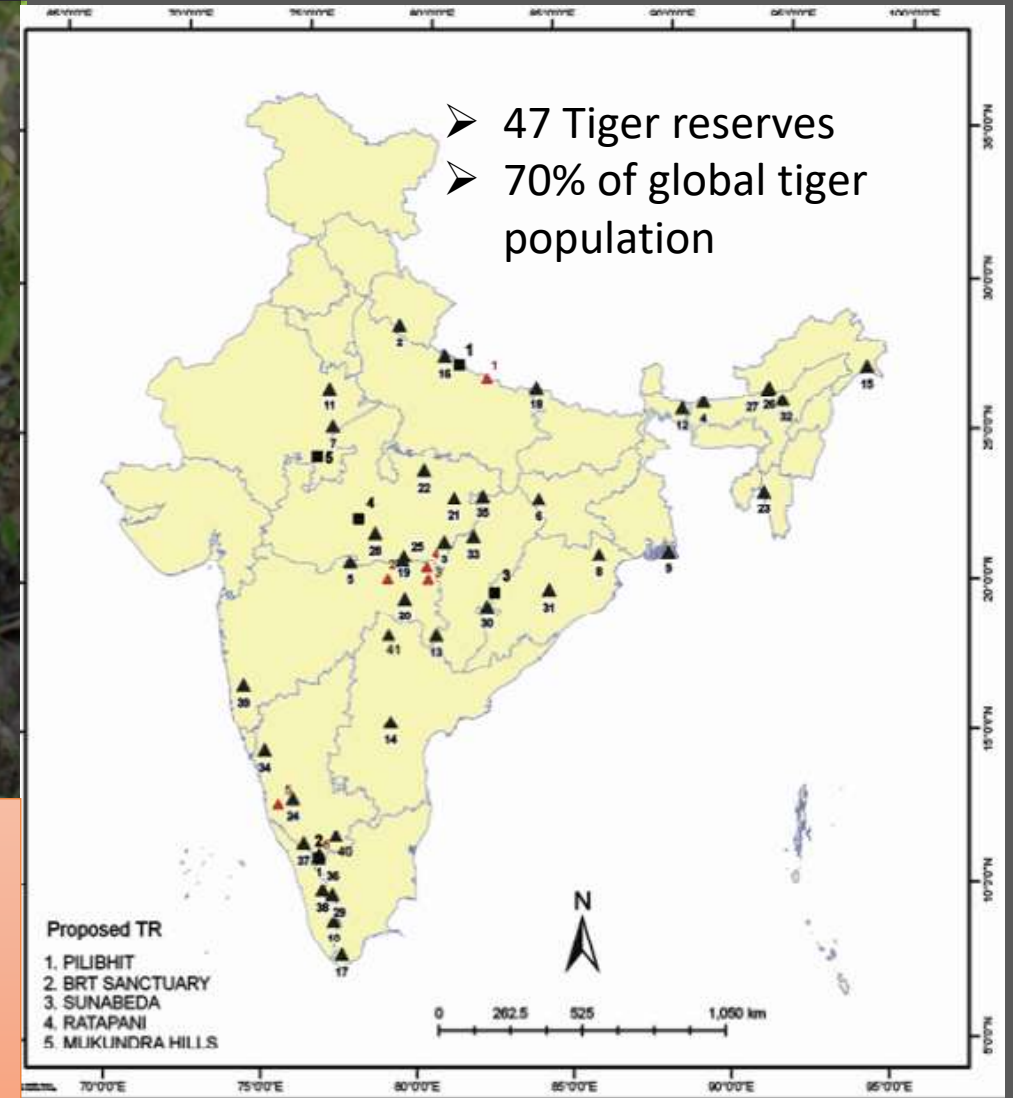
LANDSCAPES ARE COMPLEX

- Densely populated
- Megadiverse
- Economic growth oriented
- High levels of poverty



Maintaining habitats and connectivity for tigers is of prime concern for conservation in the face of pressures from transport infrastructure (NTCA, 2011;

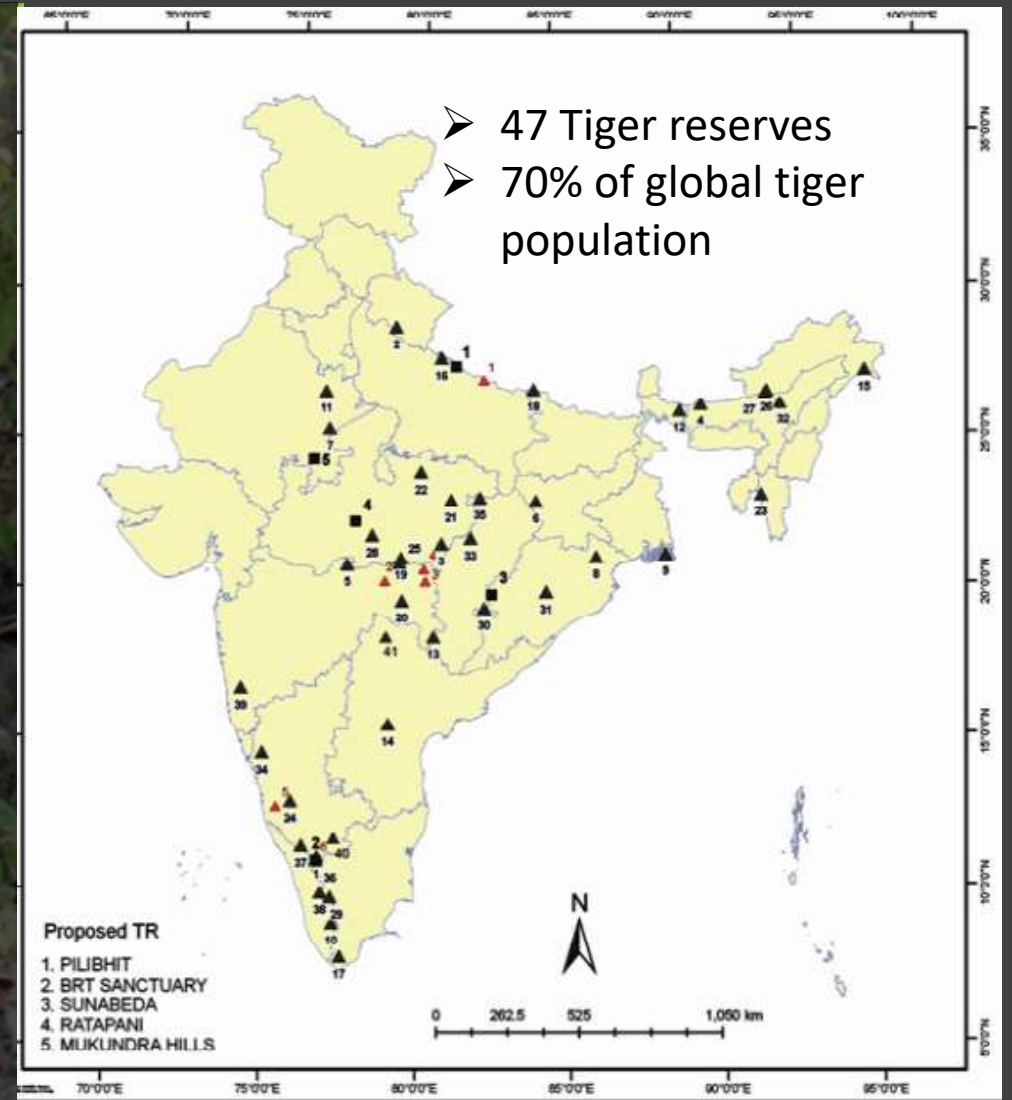
Yumnam et al., 2014; Harihar, Veríssimo, & MacMillan, 2015)



HISTORY INFLUENCES CURRENT DYNAMICS



- Colonial legacies
- Extensive top-down management and administration
 - *Protected Areas are historical timber lots / hunting grounds*
- Recent recognition of loss of agency and support for informed participation of local communities – *forest rights!*



NCCI - The Network for Conserving Central India (Actionable Science For Co-Management)

Received: 23 June 2021

Revised: 10 December 2021







Accepted: 17 January 2022

DOI: 10.1111/cobi.13909

Conservation Biology 

CONTRIBUTED PAPERS

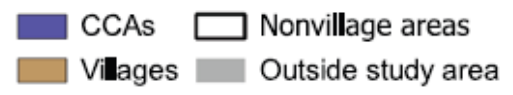
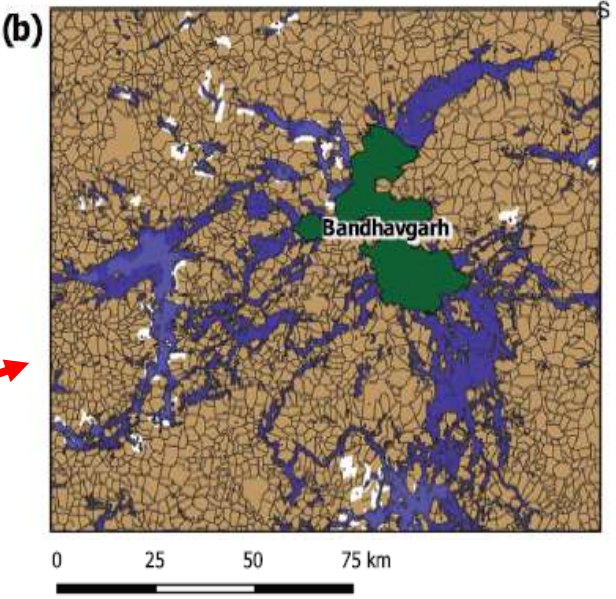
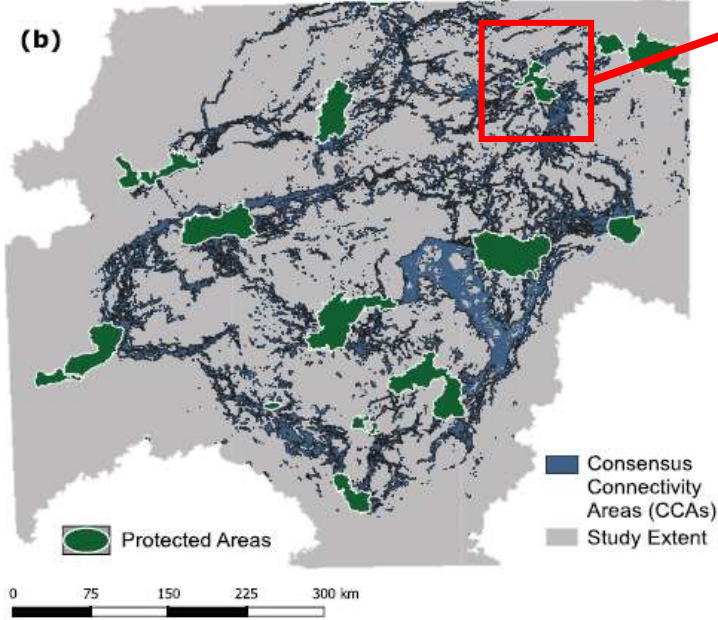
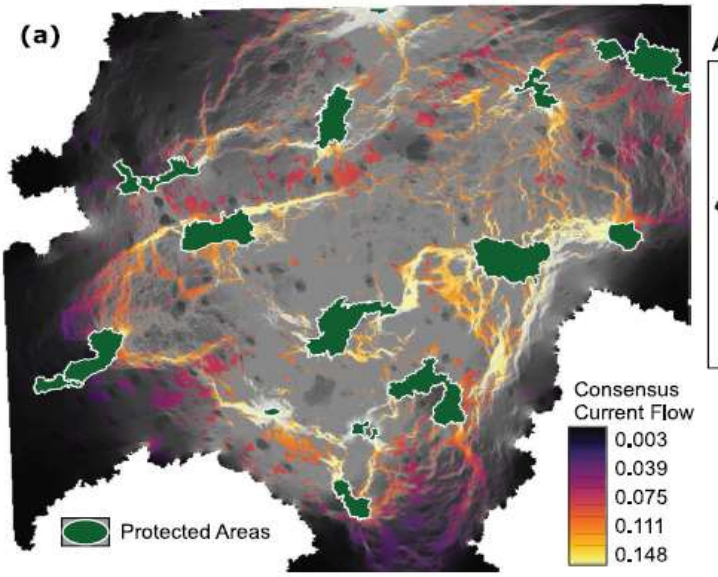
Synthesizing habitat connectivity analyses of a globally important human-dominated tiger-conservation landscape

Jay M. Schoen^{1,*}  | Amrita Neelakantan^{2,*}  | Samuel A. Cushman³ | Trishna Dutta⁴  |
Bilal Habib⁵ | Yadvendradev V. Jhala⁵  | Indranil Mondal⁵  | Uma Ramakrishnan⁶ |
P. Anuradha Reddy⁷  | Swati Saini⁵ | Sandeep Sharma^{8,9} | Prachi Thatte¹⁰ |
Bibek Yumnam⁵ | Ruth DeFries^{1,2}

NCCI - The Network for Conserving Central India

1. The Central India landscape is home to over 20% of the global tiger population

2. A peopled landscape – agriculture (subsistence and commercial), industrial development – power plants, factories, mining and linear infrastructure, growing urbanization increasing peri-urban sprawl

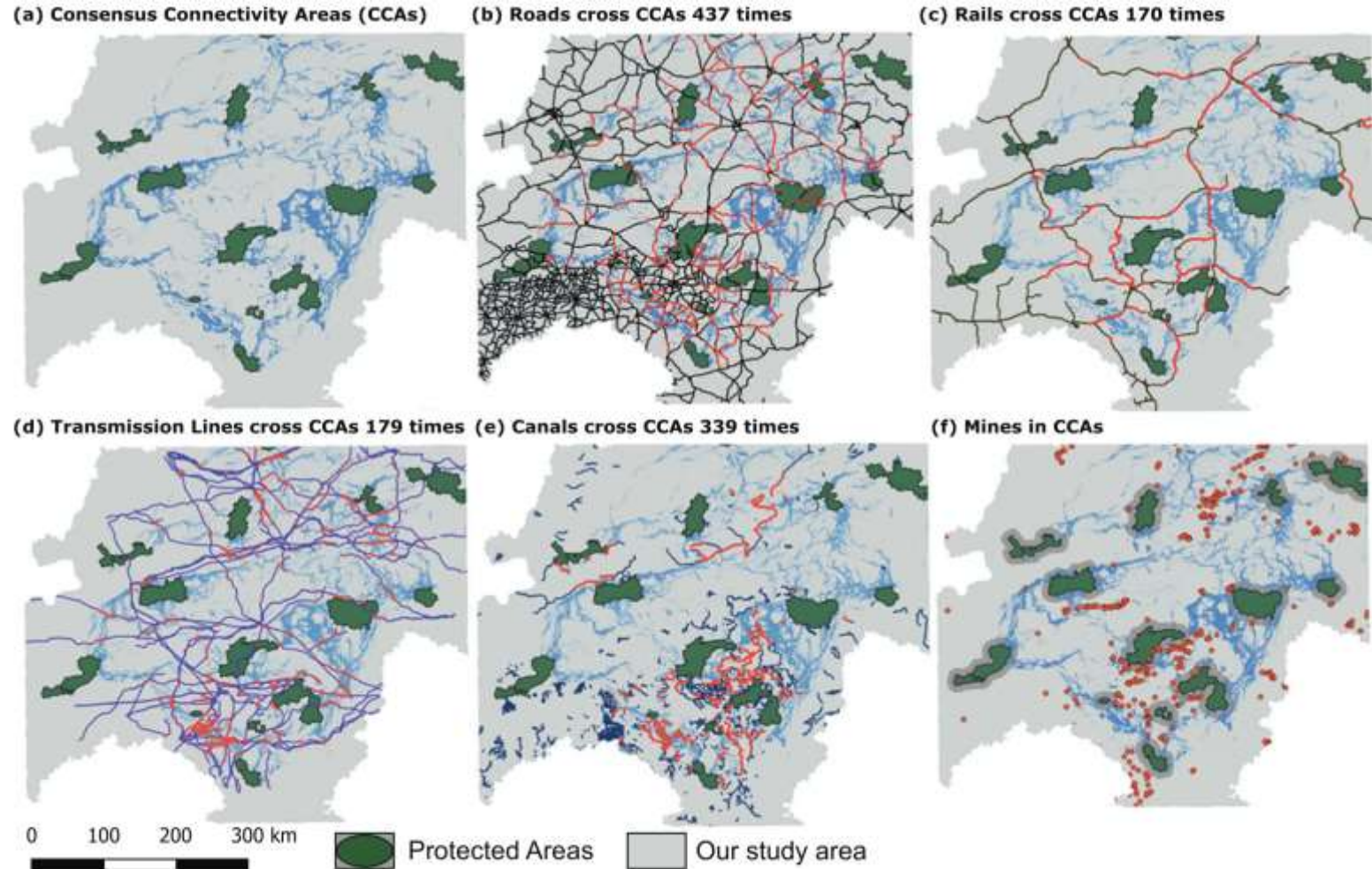


NCCI - The Network for Conserving Central India

1. The Central India landscape is home to over 20% of the global tiger population

2. A peopled landscape – agriculture (subsistence and commercial), industrial development – power plants, factories, mining and linear infrastructure, growing urbanization increasing peri-urban sprawl

3. A changing matrix from permeable to hard barriers to tiger movement (and likely other species too)





SUSTAINABLE DEVELOPMENT GOALS

| | | | | | |
|--|--|--|--|--|--|
| 1 NO POVERTY | 2 ZERO HUNGER | 3 GOOD HEALTH AND WELL BEING | 4 QUALITY EDUCATION | 5 GENDER EQUALITY | 6 CLEAN WATER AND SANITATION |
| 7 AFFORDABLE AND CLEAN ENERGY | 8 DECENT WORK AND ECONOMIC GROWTH | 9 INDUSTRY, INNOVATION AND INFRASTRUCTURE | 10 REDUCED INEQUALITIES | 11 SUSTAINABLE CITIES AND COMMUNITIES | 12 RESPONSIBLE CONSUMPTION AND PRODUCTION |
| 13 CLIMATE ACTION | 14 LIFE BELOW WATER | 15 LIFE ON LAND | 16 PEACE, JUSTICE AND STRONG INSTITUTIONS | 17 PARTNERSHIPS FOR THE GOALS | SUSTAINABLE DEVELOPMENT GOALS |



SUSTAINABLE DEVELOPMENT GOALS



SUSTAINABLE
DEVELOPMENT
GOALS



- Diversity in stakeholders is logical
- Ethical decision making
- More complexity but more rooted in reality
- Long-term gains ~ achieving multiple SDGs

*What do stakeholder's think of
when they consider wildlife
in infrastructure planning?*

- Conflict
- Coexistence
- Environmental Impact Assessments (EIAs)
- Profit

GOVERNANCE IN CONNECTIVITY CONSERVATION

Recognizing The Value of Diversity In Stakeholders

A Roundtable To Discuss Trade-Offs

MODERN GOVERNANCE – DIVERSE, FLEXIBLE & RESILIENT

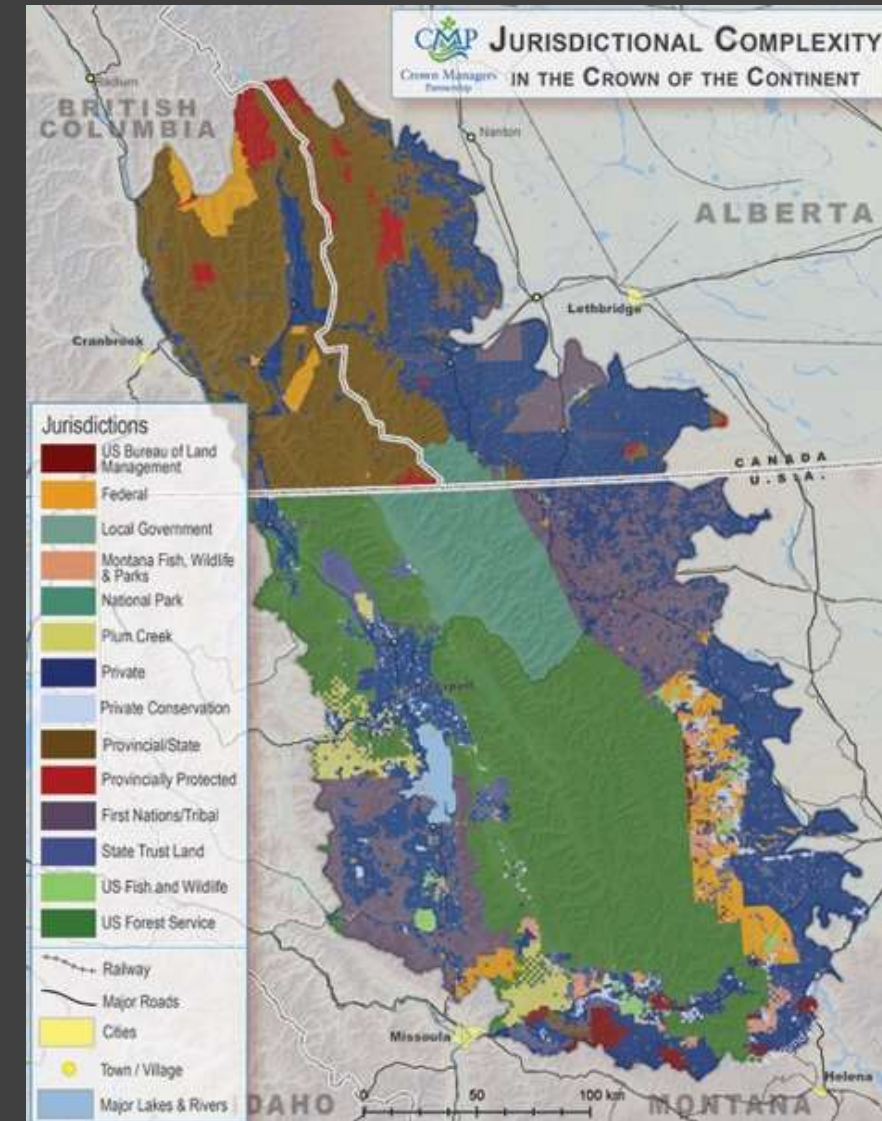
Indigenous Peoples' rights and participation

OECMs

Landscape Planning Tools

Mitigation Hierarchy

Strategic and Cumulative ESIAs



MODERN GOVERNANCE – DIVERSE, FLEXIBLE & RESILIENT

Top-down systems are trying to involve

- More Stakeholders
- More Participation
- More Expertise

NCCI - The Network for Conserving Central India


Pathways towards people-oriented conservation in a human-dominated landscape: the network for conserving Central India

Amrita Neelakantan ^a, Kishor Rithe^b, Gary Tabor ^c and Ruth DeFries ^d

Conservation action / Businesses need to be resilient + have adaptive management

- Diverse systems are more resilient
- As are those with built-in redundancies

MODERN GOVERNANCE – DIVERSE, FLEXIBLE & RESILIENT



Saves Wildlife Habitat
from hard barrier to
movement

Longer Linear
Infrastructure Route

**lower on /kms cost*

MODERN GOVERNANCE – DIVERSE, FLEXIBLE & RESILIENT



Network for Conserving Central India | Home

We are a network of researchers, NGOs and managers dedicated to *conserving biodiversity*, *improving livelihoods*, and *fostering sustainable development* in the landscapes of the Central Indian Highlands through the application of science.



Think Of
The Efficiency-Resilience Axis In Your Case-Study

Can we turn challenges into engagement spaces and opportunities for multiple goal achievement?

POLL: Which stakeholder group is the **most** represented in decision making?

- Indigenous peoples groups
- Industry Associations
- Government Management Departments
- Scientific professionals – researchers
- Wildlife advocacy groups
- Other (post in chat)

GOVERNANCE IN CONNECTIVITY CONSERVATION

Recognizing The Value of Diversity In Stakeholders

A Roundtable To Discuss Trade-Offs

Sustaining Networks And Connections

MODERN GOVERNANCE – EFFORTS THAT SUSTAIN EACH OTHER



Global Efforts – recognizes Central India's importance



**COALITION
FOR WILDLIFE
CORRIDORS**

India wide – Indian NGOs in coalition



Central India – NGOs, Researchers, Managers, still to bring Communities + Industry



- **Holding Space and Contributing Resources - Shared Vision Of Complex Landscapes**
- **TRUST (building and maintaining) – work on something everyone agrees is priority**
- **Showcase ethical decision making opportunities – use the power of diverse voices**
- **Co-manage conservation lands for flows and processes [but protect refuges and nodes]**

CRELE:
Credibility; Relevancy; Legitimacy

ACTA:
Applicability, Comprehensiveness, Timing and Accessibility

**WILDLIFE
CONNECT**



- **Accessibility to the latest science**
- **Synthesis of complex outcomes and implications**
- **Supporting management outside of protected areas to strengthen conservation goals**
 - in the region,
 - on the continent,
 - across the globe.

***What is the biggest roadblock in creating a
'neutral ground network'
for your working landscape?***

- Funding
- Inclusion of diverse groups
- Coordination within network
- Interest of stakeholders is low / siloed thinking still
- Other (post in chat)

Social-ecological systems management and network building for governance:

Alexander SM, Andrachuk M, Armitage D. 2016. Navigating governance networks for community-based conservation. *Frontiers in Ecology and the Environment* 14:155–164.

Berkes F. 2009. Evolution of co-management: Role of knowledge generation, bridging organizations and social learning. Elsevier Ltd. Available from <http://dx.doi.org/10.1016/j.jenvman.2008.12.001>.

Berkes F. 2017. Environmental governance for the anthropocene? Social-ecological systems, resilience, and collaborative learning. *Sustainability (Switzerland)* 9.

Hahn T, Olsson P, Folke C, Johansson K. 2006. Trust-building, knowledge generation and organizational innovations: The role of a bridging organization for adaptive comanagement of a wetland landscape around Kristianstad, Sweden. *Human Ecology* 34:573–592.

Hilty J et al. 2020. Guidance for conserving connectivity through ecological networks and corridors.

Keeley ATH, Beier P, Creech T, Jones K, Jongman RH, Stonecipher G, Tabor GM. 2019. Thirty years of connectivity conservation planning: an assessment of factors influencing plan implementation. *Environmental Research Letters* 14:103001. IOP Publishing.

Neelakantan A, Rithe K, Tabor G, DeFries R. 2021. Pathways towards people-oriented conservation in a human-dominated landscape: the network for conserving Central India. *Ecosystems and People* 17:432–446. Taylor & Francis. Available from <https://doi.org/10.1080/26395916.2021.1955745>.

Sarkki S, Niemelä J, Tinch R, van den Hove S, Watt A, Young J. 2014. Balancing credibility, relevance and legitimacy: A critical assessment of trade-offs in science-policy interfaces. *Science and Public Policy* 41:194–206.

Thank you!

Q&A