



Invest in Childcare

Update on activities

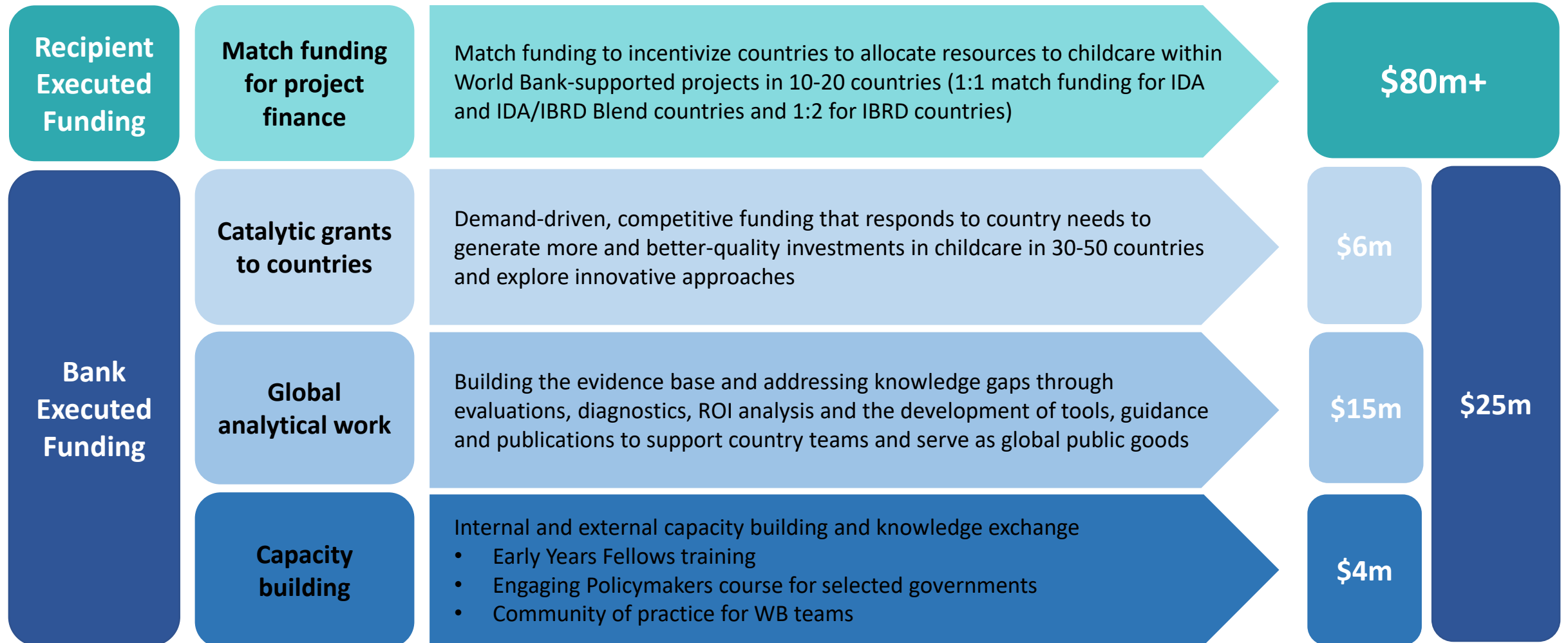
22 January 2024



Agenda

- Update on Invest in Childcare activities and Q&A - 20 minutes
- Women, Business and the Law progress and emerging findings and Q&A- 15 minutes
- Sharing work from teams: DRC and Disability Inclusion & Q&A - 30 minutes
- Closing discussion- 10 minutes
- AOB – 15 minutes

Invest in Childcare: cross-sectoral work program to drive investments in childcare across the WBG



Thematic brief on care

The Invest in Childcare team collaborated with the World Bank Gender Group on a thematic brief on care, which provides an analytical foundation for the World Bank Gender Strategy 2024-30.

- **“Addressing Care to Accelerate Equality”** takes a broad framing of care and considers childcare, elder care, and disability inclusion. The brief:
 - Reviews key thematic issues related to the care economy
 - Summarizes evidence on promising solutions and operational good practices
 - Highlights promising areas for future engagement to promote gender equality and empowerment
 - Helps lay out ways the WBG can more actively engage in the broader care economy.



Global coverage of activities so far

East & Central Europe

- 1 BE grant totaling \$90,000
- 1 RE grant totaling \$5M
- 1 Early Years Fellow

Middle East & North Africa

- 3 BE grants totaling \$356,250
- 3 Early Years Fellows

South Asia

- 3 BE grants totaling \$628,000
- 1 Impact Evaluation
- 1 Early Years Fellow

Latin America & Caribbean

- 4 BE grants totaling \$695,000
- 2 Impact Evaluations
- 2 Early Years Fellows

Sub-Saharan Africa

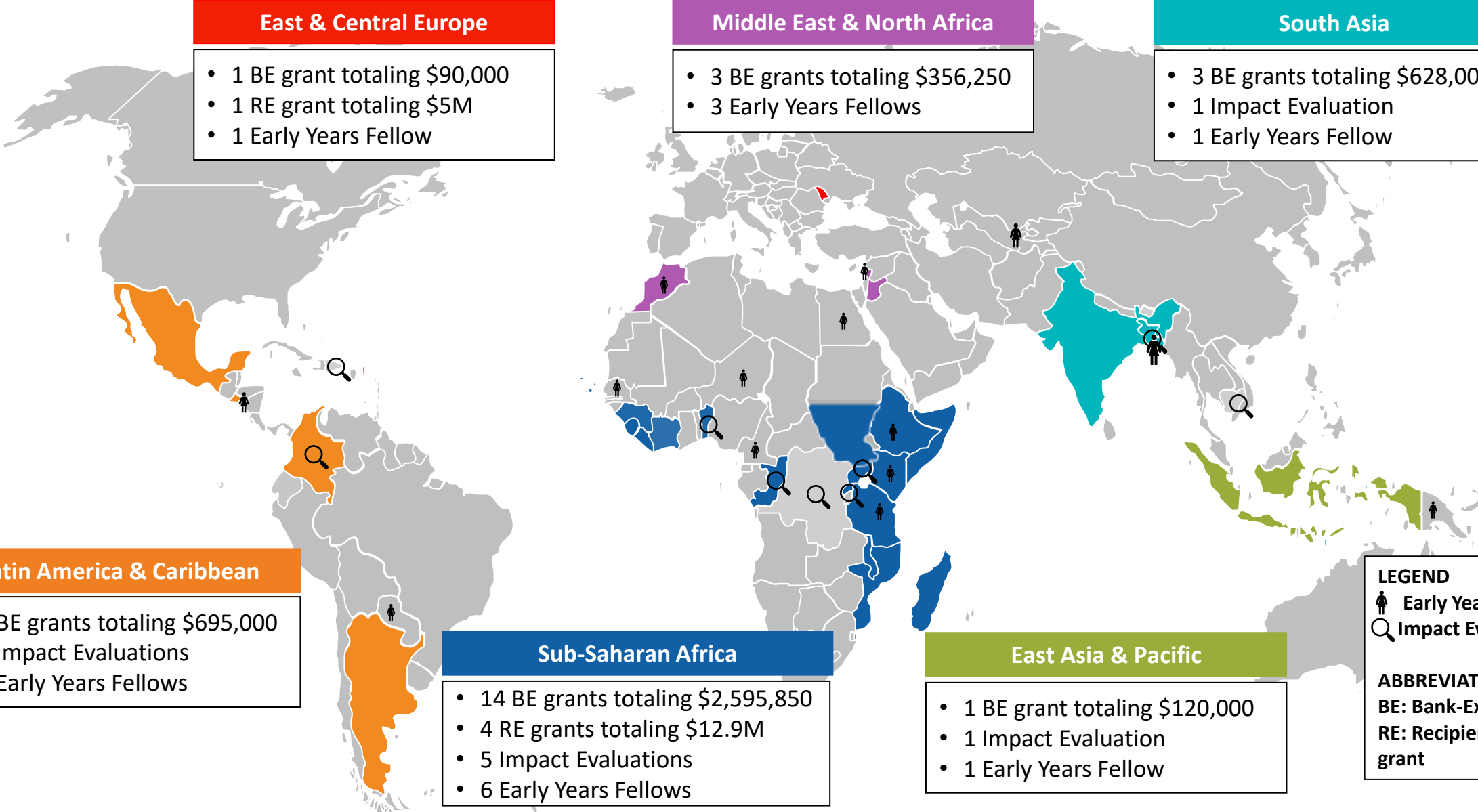
- 14 BE grants totaling \$2,595,850
- 4 RE grants totaling \$12.9M
- 5 Impact Evaluations
- 6 Early Years Fellows

East Asia & Pacific

- 1 BE grant totaling \$120,000
- 1 Impact Evaluation
- 1 Early Years Fellow

LEGEND
👤 Early Years Fellow
🔍 Impact Evaluation

ABBREVIATIONS
BE: Bank-Executed grant
RE: Recipient-Executed grant



Grants

- **Catalytic country grants (“Bank-Executed grants”):**
 - \$4.5 million of funding approved for 26 proposals in the first funding round in December 2022.
 - Second funding round closed in December 2023 and received a record 57 proposals totaling \$12.6 million in funding requests. Proposals will be evaluated in the next 2-3 months and details of grants awarded released once approved.
- **Project match funding (“Recipient-Executed grants”):**
 - \$17.9 million in Recipient Executed (RE) match funding awarded to 5 projects to date: Cote D’Ivoire (\$5m); Moldova (\$5m); Rwanda (\$4m); Senegal (\$1.9m); and Somalia (\$2m).
 - Discussions are ongoing with another 8+ countries and grants will be announced once projects received WB board approval.



Snapshots of approaches emerging from country work

- **Leveraging existing community platforms to offer quality childcare that meets the needs of working parents**
 - Cote d'Ivoire (RE grant – expanding childcare within community nutrition centers to support working mothers within health and nutrition project)
- **Expanding childcare through education systems (extending preschool hours and / or offering services for younger children)**
 - Moldova (RE grant – expanding hours of care available for children aged 0-7, targeting refugees, infrastructure improvements, quality improvements)
- **Sustainable childcare models to facilitate participation across a variety of sectors / projects**
 - Madagascar, Rwanda, Sierra Leone (BE grants for public work schemes)
 - Malawi (BE grant to re-enroll young mother in schools)
 - Somalia and Senegal (RE grants to make childcare available to facilitate women's participation in training and higher education and to train the workforce)
- **Support childcare entrepreneurs as income generating opportunity within SPJ projects with a package of training and support**
 - Benin and Republic of Congo (BE grants)
- **Building the enabling environment with focus on quality assurance systems and workforce training**
 - Integrating childcare into skills training programs to build a quality workforce and establish standards (Senegal RE grant)

Global analytical work

- **Data collection:**

- WBL data collection on legal and regulatory frameworks related to the availability, financing and quality of childcare services scaled up to 190 countries.
- LSMS developing a childcare module to integrate into national household surveys (to be piloted in Nigeria in 2024 and additional countries in 2025).

- **Evaluation:**

- 6 evaluation proposals awarded so far.
- All teams awarded project match funding are preparing impact evaluations of the childcare interventions.

- **Tools and guidance:**

- Initial set of priority tools and guidance developed and drafts circulated internally with selected WB teams.
- Set includes: a package of sample instruments for childcare situation assessments; guidance note on the essential elements of quality; and suggested childcare indicators and tools for conducting impact evaluations.

Capacity building, knowledge exchange and technical assistance

- **Community of Practice (CoP):**
 - Internal CoP launched in September 2023 to bring together WBG teams working on childcare with knowledge and exchange and learning opportunities on priority topics.
- **Engaging Policymakers to Invest in Childcare:**
 - 24 applications received for the 18-month program to advance the childcare agenda in countries.
 - 10-12 country teams and government counterparts expected to be selected.



Looking ahead

Priority activities over the coming months include:

- **Finalizing country grant awards**
 - Applications for the second round of country grants closed in December 2023.
 - Shortlisted teams will be interviewed in February-March with final decisions expected in April.
- **Developing and disseminating priority tools and guidance for World Bank teams:**
 - Various other tools and guidance under development
 - These include guidance notes on initiating dialogue with government counterparts and supporting childcare through Development Policy Loans (DPLs), a report on how governments can harness the power of communities and other nonstate sector actors in childcare, a quality assessment tool, and repositories of materials on key topics.
- **Launching Engaging Policymakers to Invest in Childcare**
 - Following the selection of country teams, the 18-month program will launch by April 2024.
- **Launching self-paced online course for the Early Childhood Education Policy Academy Platform**
 - Course provides an introduction into the rationale for investing in childcare and explores the links between quality childcare and women's economic empowerment, child development, family welfare, business productivity and economic growth.
 - The course is being finalized and will be made publicly available once ready.
- **Updating the Invest in Childcare website**

Annex

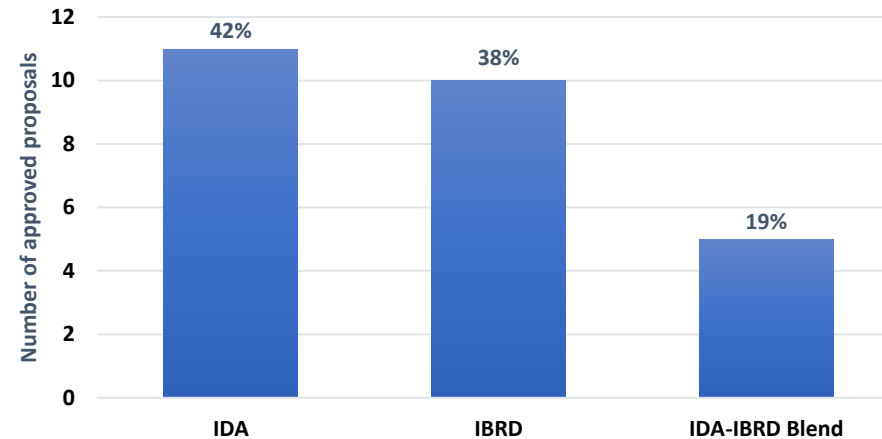
All major strands of the work program are launched and progressing well

Recipient Executed Funding	Match funding for project finance	<ul style="list-style-type: none">• \$17.9 million in Recipient Executed (RE) match funding awarded to 5 projects to date: Cote D'Ivoire (\$5m); Moldova (\$5m); Rwanda (\$4m); Senegal (\$1.9m); and Somalia (\$2m).
Bank Executed Funding	Catalytic grants to countries	<ul style="list-style-type: none">• \$4.5m awarded to date to 26 teams working across various sectors and 6 regions in December 2023.• Second funding round closed in December 2023 and received a record 57 proposals totaling \$12.6m in requests for funding.
	Global analytical work	<ul style="list-style-type: none">• 6 evaluation proposals awarded so far.• Women, Business and the Law (WBL) data collection scaled up to 190 countries.• LSMS developing childcare module to integrate into household surveys.• Initial set of priority tools and guidance developed.
	Capacity building	<ul style="list-style-type: none">• Internal Community of Practice (CoP) launched to bring together World Bank teams working on childcare.• 24 applications received for the 18-month Engaging Policymakers to Invest in Childcare program.

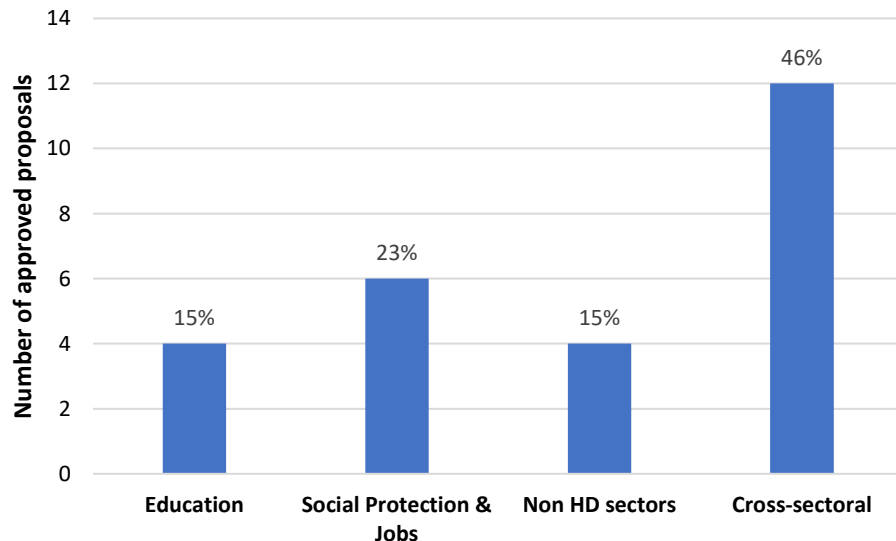
Breakdown of catalytic country grants awarded to date

- **26 proposals approved totaling \$4.5 million in the first round of funding in December 2022**
 - Highly cross-sectoral with a mix of income levels, regions and activity types.
 - 24 grants finance diagnostics and upstream analytical work (such as situation assessments and mapping of childcare services).
 - 20 grants support strengthening the enabling environment for childcare (such workforce development and forging sector strategies).

Country income level breakdown

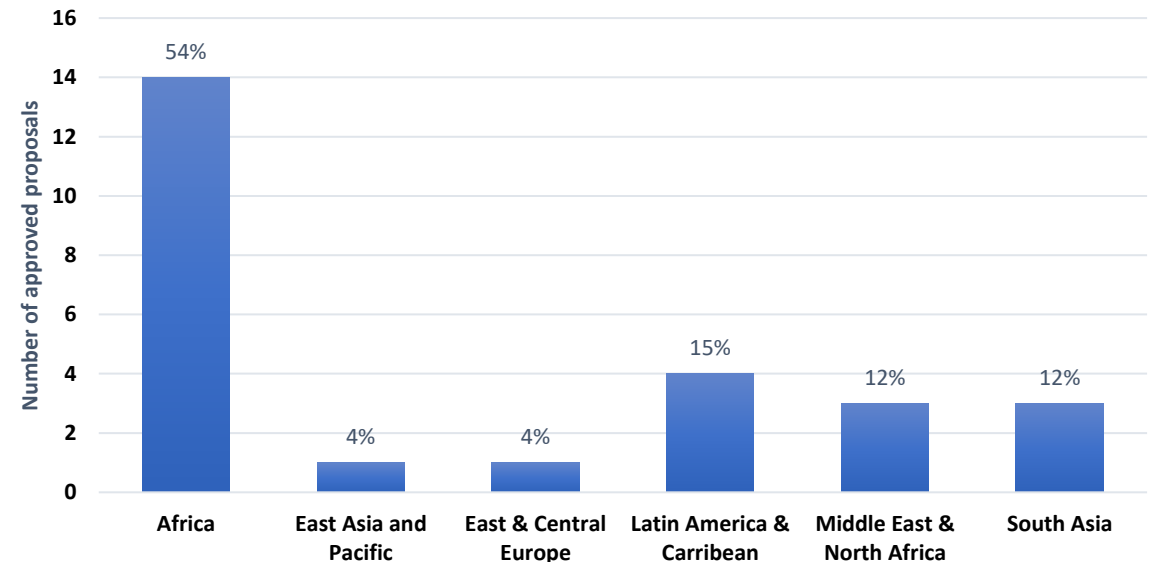


Sectoral breakdown



Non-human development (no- HD) proposals are from Social Sustainability and Inclusion (SSI) and Agriculture General Practices (GPs).

Regional breakdown



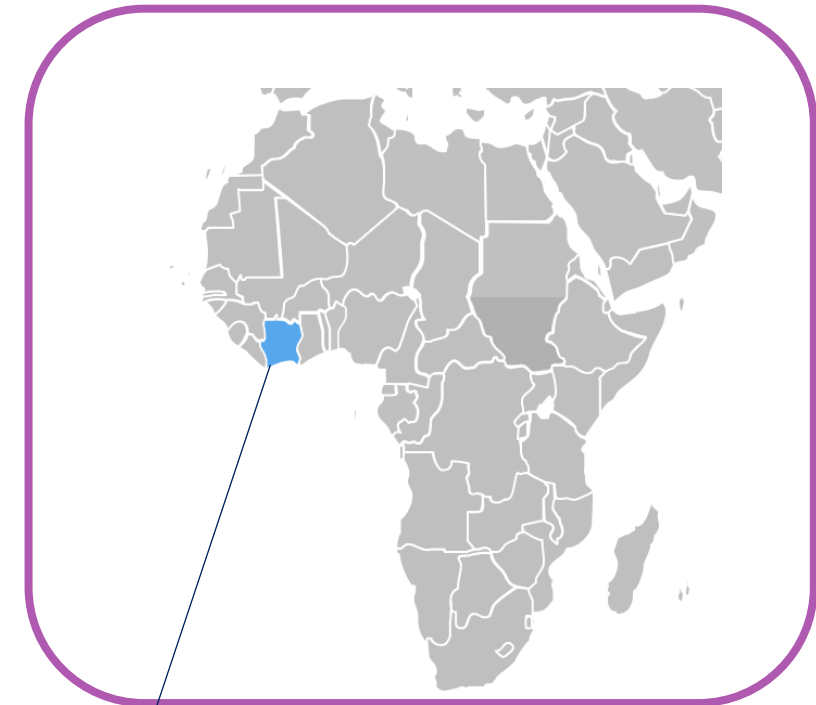
Country example: Cote d'Ivoire

Invest in Childcare is leveraging community nutrition platforms (FRANCs) to improve the quality and accessibility of childcare and meet the needs of working parents by offering consistent and reliable childcare.

The **Health, Nutrition and Early Childhood Development MPA** aims to improve the utilization of quality health, nutrition, and early years development services in targeted regions in Cote D'Ivoire.

Program awarded \$5m in RE (matched by \$5m in IDA) to:

- **Develop norms and standards** for childcare services in FRANCs
- **Modifying FRANC spaces to accommodate very young children and training personnel**
- **Support implementation research** to understand parents' experiences of using the childcare services and assess their impacts on women's empowerment and child development outcomes
- **Conduct an impact evaluation** to study the effects of childcare provision on women's empowerment and productivity, child and family outcomes



**Health, Nutrition and ECD
Program (P179363)**
Funding awarded: \$5m